

Galanz

REFRIGERATOR INSTRUCTION MANUAL

Model No.:

GLR40TBKER/GLR40TRDER

**To ensure proper use of this appliance and for your safety,
please read the following instructions completely before
operating this appliance**

TABLE OF CONTENTS

Parts and features.....1

Important safety instructions.....2

Important grounding instructions.....3

Installation instructions.....4

Operating instructions.....4

Cleaning.....5

Defrosting.....5

Power Failure.....6

Vacation.....6

Moving the refrigerator.....7

Troubleshooting tips.....7

Installing door handles.....9

Replacement of the interior light.....10

Specifications.....11

Warranty.....12

SAVE THIS INFORMATION FOR FUTURE REFERENCE

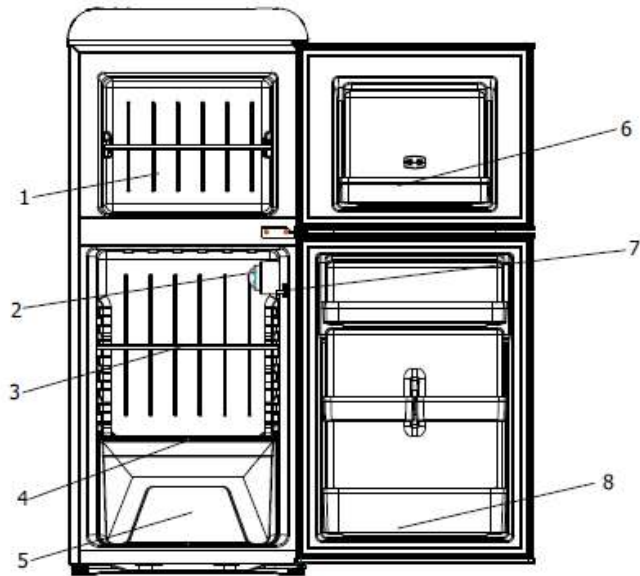
Galanz

Compact Refrigerator

Important notice: Please keep this appliance standing upright during transportation. If the unit must be laid on its side at any time, please stand the appliance upright for at least 4 hours before using.

For all consumer questions or inquiries, please contact our U.S. customer service line at 800-562-0738 .

PARTS AND FEATURES



- 1.Freezer Room
- 2.Lamp and temperature control knob
- 3.Shelf
- 4.Crisper glass cover
- 5.Vegetable crisper
- 6.Rod
- 7.Lamp switch
- 8.Bottle guard

IMPORTANT SAFETY INSTRUCTIONS

When using electrical appliances, basic safety precautions should always be followed to reduce the risk of fire, electrical shock, and/or injury to persons, including the following:

Read all instructions before using the appliance.

1. This appliance must be grounded. Connect only to properly grounded outlet. See Important Grounding Instructions on page 3.
2. Install or locate this refrigerator only in accordance with the provided Installation Instructions.
3. To protect against electric shock, do not place cord, plug, or refrigerator in water or other liquid.
4. Close supervision is necessary when any appliance is used by or near children.
5. Do not operate this appliance if it has a damaged cord or plug, if it is not working properly, or if it has been damaged or dropped.
6. This appliance should be serviced only by qualified service personnel. Contact your nearest authorized service facility or call our toll-free customer service number for information on examination, repair, or adjustment.
7. Do not cover or block any openings or air vents on this appliance.
8. Do not store this appliance outdoors. Do not use this appliance near water. For example, do not use near a kitchen sink, in a wet basement, near a swimming pool, or similar locations.
9. Do not locate this appliance near heat sources or open flames.
10. Do not use or store gasoline or other flammable vapors and liquids in the vicinity of this or any other appliance. The fumes can create a fire hazard or explosion.
11. Do not place heavy objects or magnet items on top of the refrigerator.
12. The refrigerant of this product is R600a, which is flammable. Make sure not to damage the cooling system during the transportation and installation.
13. To minimize the risk of possible ignition due to improper service or the use of incorrect parts, this unit must be serviced by factory authorized personnel only.

!!SAVE THESE INSTRUCTIONS!!

DANGER! RISK OF CHILD ENTRAPMENT**Before you throw away your old refrigerator or freezer:**

1. Take off the doors.
2. Leave the shelves in place so that children may not easily climb inside.

Refrigerants

All refrigeration products contain refrigerants, which under federal law must be removed prior to product disposal. If you are getting rid of an old refrigeration product, check with a qualified disposal company for instructions.

IMPORTANT GROUNDING INSTRUCTIONS

This appliance must be grounded. In the event of an electrical short circuit, grounding reduces the risk of electric shock by providing an escape wire for the electric current. This appliance is equipped with a cord having a grounding wire with a grounding plug. The plug must be plugged into an outlet that is properly installed and grounded.

WARNING- Improper use of grounding can result in a risk of electric shock.

1. Consult a qualified electrician or serviceman if the grounding instructions are not completely understood or if doubt exists as to whether the appliance is properly grounded.
2. If it is necessary to use an extension cord, use only a 3-wire extension cord that has a 3-blade grounding plug, and a 3-slot receptacle that will accept the plug on the appliance. The marked electrical rating of the extension cord shall be equal to or greater than the rating of the appliance.

Three-pronged
(grounding) plug



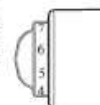
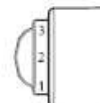
Properly polarized and
grounded outlet

INSTALLATION INSTRUCTIONS

1. Before using the refrigerator for the first time, remove all of the packing materials, including the foam base and adhesive tape holding accessories in place.
2. The refrigerator should be located on a firm, flat surface that is strong enough to support the refrigerator when it is fully loaded.
3. Choose a location that is not exposed to direct sunlight, high temperatures, heat sources such as a stove or radiator, or in a moist area. Do not choose a location where the temperature will go below 55°F as this could cause the refrigerator to not function properly.
4. Leave a minimum of ½" between each side of the appliance and the wall. The top and back of the appliance should have a minimum of 1½" clearance. This allows for proper air circulation. This appliance is intended to be free-standing and should not be built-in or placed in a recessed area.
5. The refrigerator legs must be adjusted during installation in order to function properly. The leveling legs on the front corners can be adjusted by turning clockwise to raise the appliance, and counter-clockwise to lower it. Be sure to have the appliance slope slightly backward to ensure that the door closes tightly.

OPERATING INSTRUCTIONS

1. Allow refrigerator to stand upright for 4 hours before using.
2. Plug into a grounded outlet or appropriate extension cord (see Important Grounding Instructions).
3. The temperature of the refrigerator can be controlled manually with the control dial. However, the number shown on the knob does not directly represent the temperature. Instead, the larger the number is, the cooler the interior temperature will be. Change to "0" stops the cooling but does not turn the power off. Turn the knob to setting 4 for normal use; turn it to setting 5-7 if a cooler temperature is required or to setting 1-3 when a warmer temperature is needed.
4. There should always be some space between food items inside for air circulation.



5. Food should be kept in sealed containers to prevent odors or drying.
6. Hot food should be cooled down before placing into the appliance to prevent increase in interior temperature and power consumption. Placing food inside too soon will impact the performance.
7. Reducing the frequency of door opening can lower power consumption.

CLEANING

Interior

Clean the interior of the appliance with a mixture of warm water and baking soda, using about 1 – 2 tablespoons per quart of water. Use a sponge or soft cloth and be sure to wring excess moisture out before cleaning around the controls.

Rinse thoroughly with warm water and dry with a clean, soft cloth.

Exterior

The exterior surface can be cleaned using warm water and a mild detergent.

Rinse thoroughly and dry with a clean, soft cloth.

Door Gasket

The door gasket must be kept clean to ensure a proper seal. Be sure to clean the gasket frequently, using the method described above.

DEFROSTING

Frost build-up on the walls of the freezer section will increase energy consumption and reduce the efficiency of the appliance. Defrost the freezer section whenever the frost reaches a thickness of ¼".

1. Remove food from the refrigerator and freezer compartment.

2. If your model has a drip tray, be sure to place it under the freezer compartment to collect water. It may be necessary to empty the drip tray during the defrosting process.
3. Turn the unit off and unplug it from the outlet.
4. The defrosting process can take several hours. Open the door to speed up the process.
5. When defrosting is completed, wipe the compartment with a soft cloth to remove any remaining water.
6. Reset the refrigerator temperature, following the operating instructions on page 4.

ATTENTION: Do not use sharp or pointed objects to remove frost or ice from the surfaces of the freezer compartment. This can cause damage to the compartment walls and cooling coils, and will void the warranty.

POWER FAILURE

When a power failure occurs, the refrigerator can normally store food for several hours. Do not put additional food into the appliance during a power failure, and do not open door. Disconnect the plug from the outlet, and reconnect when the power has been restored. **Always inspect for, and discard, any spoiled or thawed food in the refrigerator or freezer before resuming use of the appliance.**

VACATION

Before leaving on any vacation, remove food that could spoil while you are gone. If you plan to be gone for an extended period of time, we recommend that all of the food should be removed from the appliance and it should be turned off and unplugged from the outlet. Clean the interior according to the directions provided in the Cleaning section of this manual, and leave the door open.

MOVING THE REFRIGERATOR

1. Turn off the refrigerator and unplug from the outlet.
2. Remove all food and securely tape down all loose items inside.
3. Tape the door shut.
4. Do not lift or pull the door or door handle during transportation.
5. When moving, the appliance can not be tilted over 45 degrees as possible damage to the sealed system could occur.
6. Take care to avoid strong vibration or impact to the appliance.

TROUBLESHOOTING TIPS

Problem	Possible Cause	What to do
Refrigerator does not operate	•Not plugged in tightly	•Unplug, wait 10 seconds, then plug in again
	•Tripped circuit breaker or blown fuse	•Replace fuse or reset circuit breaker
	•Problem with electrical outlet	•Consult with a professional electrician
Refrigerator seems too warm/food does not seem to cool	•Temperature setting may be too warm	•Lower the temperature setting
	•Door opened too frequently	•This is normal
	•Door not closed tightly	•Check to make sure nothing inside is causing the door to not close
	•Warm weather	•This is normal

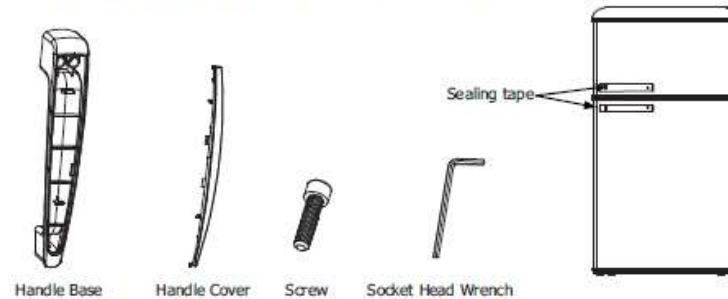
Problem	Possible Cause	What to do
Compressor runs too long, or cycles on and off frequently	• Hot weather	• This is normal
	• Door opened too frequently	• This is normal
	• Door not closed tightly	• Check to be sure nothing inside the refrigerator is preventing the door from closing
	• Temperature control set at coldest setting	• Adjust temperature to a warmer setting
	• Large amounts of food placed in refrigerator	• This is normal
Moisture forms on the outside of the appliance	• This is normal during periods of high humidity	• Wipe the surface dry using a soft cloth
	• The door is slightly open	• Close the door tightly
Moisture forms on the inside of the appliance	• This is normal during periods of high humidity	• This is normal
	• Door is opened too long or too frequently	• Do not open the door too long or too frequently
Vibration noise	• Refrigerator is on an uneven surface	• Adjust the leveling legs
	• Refrigerator is touching a wall	• Move the refrigerator away from the wall

The following are normal conditions that can be encountered during the operation of this appliance:

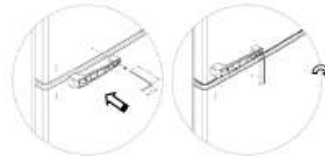
- The flow of refrigerant through the coils can cause a noise.
- The sides of the appliance may become warm as a result of the cooling function.

INSTALL THE HANDLES

1. Take out accessory from packing bags: two handles, two shake handle covers, and six screws.
2. Prepare a cross screwdriver.
3. Remove the screw hole sealing tape on the door.



4. Make sure the three screw holes in the shake hands are aligned with those in the door, and then respectively screw them together. The right side one is suggested to be preferred to be screwed down.



5. Install handle cover on the handle.

Tips for the Steps to Install:

- (1) Buckle the handle on the left side first.
- (2) Buckle the handle on the left side.
- (3) Buckle the middle part of the handle tightly in the end. And a click can be heard if the handle is properly installed.



REPLACEMENT OF INTERIOR LIGHT

Uninstall the cover and replace the light with a screwing light (120V/10W). Refer to the illustrations and instructions below:

1. Move the lampshade 1,2~2 inches according to arrow point direction.



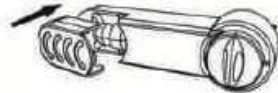
2. Take out the lamp shade.



3. Rotate and take out the bulb in counterclockwise direction.



4. Replace bulb and reinstall shade.



SPECIFICATIONS

Electric shock protection type		I
Capacity (cu.ft)	Freezer	1.4
	Refrigerator	2.6
Voltage (VAC)		120
Frequency (Hz)		60
Current (A)		0.93
Voice [dB(A)]		≤42
Energy consumption (kw.h/24h)		1
Refrigerant		R600a/0.99 oz
Net weight		73.9 lbs
Interior temperature (F)	Freezer	≤0
	Refrigerator	32 ~46,4
Unit dimensions (in inches)	Width	19.13
	Depth	21.61
	Height	42.78

Limited Warranty

This warranty applies to products purchased and used in the U.S. This is the only express warranty for this product and is in lieu of any other warranty.

This product is warranted to be free from defects in material and workmanship for a period of one (1) year from the date of original purchase, except as noted below. During this period, we will repair or replace this product at our option.

This warranty extends only to the original consumer purchaser and does not cover a defect resulting from abuse, misuse, neglect including failure to clean product regularly in accordance with manufacturer's instructions, use for commercial purposes, or any use not in conformity with the printed directions.

We exclude all claims for special, incidental, and consequential damages caused by breach of express or implied warranty. All liability is limited to the amount of the purchase price. **Every implied warranty, including any statutory warranty of merchantability or fitness for a particular purpose, is disclaimed except to the extent prohibited by law, in which case such warranty is limited to the duration of this written warranty.** This warranty gives you specific legal rights. You may have other legal rights that vary depending on where you live. Some states do not allow limitations on implied warranties or special, incidental, or consequential damages, so the foregoing limitations may not apply to you.

If you have a claim under this warranty, please call our CUSTOMER SERVICE NUMBER.
For faster service please have model, series, and type numbers ready for operator to assist you.

CUSTOMER SERVICE NUMBER

In the U.S. 800-562-0738

KEEP THIS NUMBER FOR FUTURE REFERENCE!

Warrantor: Zhongshan Galanz Consumer

Electric Appliances Co., Ltd, Guangdong 528429