

INSTRUCTION MANUAL

VieAir

16 INCH DIGITAL WALL FAN WITH REMOTE
ITEM NO.: VA-16W



PLEASE READ AND SAVE THIS INSTRUCTION.

Attention: Pictures in the IM are for reference only.

READ AND FOLLOW ALL INSTRUCTION BEFORE OPERATING FAN

CAUTION

Read rules for safe operation and instructions carefully.

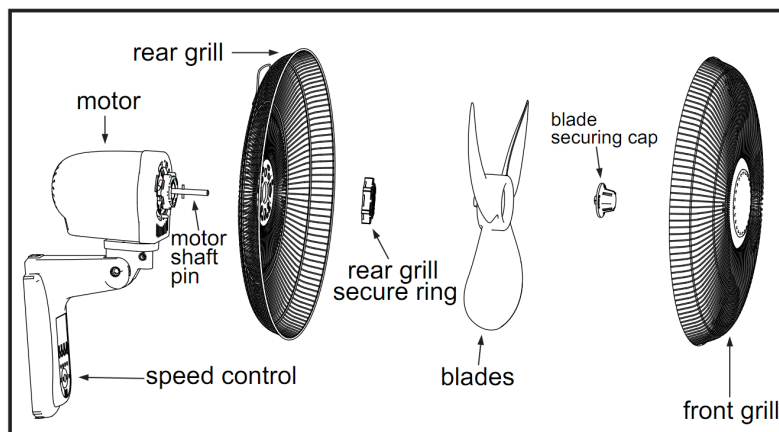
WARNING

1. This appliance has a polarized plug (one blade is wider than the other). To reduce the risk of electric shock, this plug is intended to fit in a polarized outlet only one way. If plug does not fit fully in the outlet, reverse the plug. If it still does not fit, contact a qualified electrician. Do not attempt to defeat this safety feature.
2. To reduce the risk of fire or electric shock, DO NOT use this fan with any solid-state speed control device.

RULES FOR SAFE OPERATION

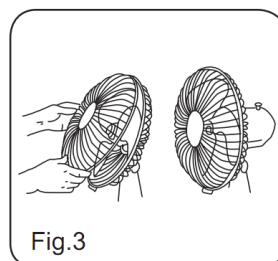
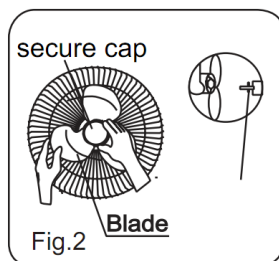
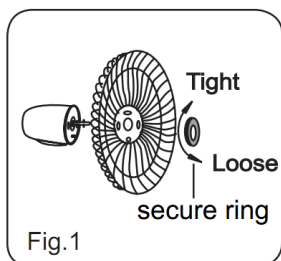
1. Never insert fingers, pencils, or any other object through the guard when fan is running.
2. Disconnect the fan when moving from one location to another.
3. Disconnect the fan when removing grills for cleaning.
4. Be sure fan is on a stable surface when operating to avoid overturning.
5. DO NOT use fan in window. Rain may create electrical hazard.
6. Ensure that the fan is switched off from the supply mains before removing the grille.
7. Do not operate any fan with a damaged cord or plug. Discard fan or return to an authorized service facility for examination and/or repair.
8. Do not run cord under carpeting. Do not cover cord with throw rugs, runners, or similar coverings. Do not route cord under furniture or appliances. Arrange cord away from traffic area and where it will not be tripped over.

PART FIGURE



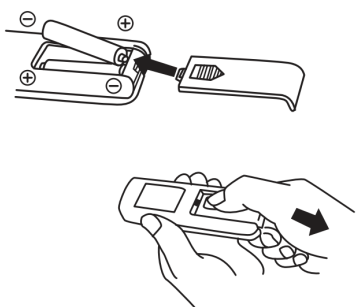
ASSEMBLY COMPONENTS

1. Unscrew the secure ring clockwise from the fan motor. Fix the rear grill to the motor then tighten the secure ring again (see fig.1);
2. Insert the blades into the motor shaft pin, and turn the fan blade securing cap counterclockwise to tighten the blade (see fig.2).
3. Fix the front grill and the rear grill with circlip clip and then use the fasten clip to tighten the fan grill (see fig.3).



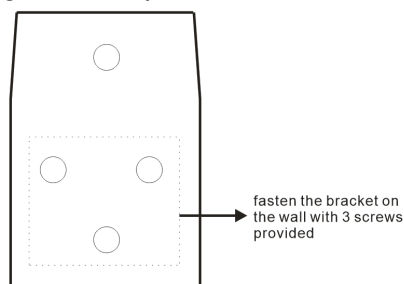
BATTERY WARNING

1. Do not dispose of batteries in fire, batteries may explode or leak;
2. Do not mix old and new batteries;
3. Do not mix alkaline, standard(carbon-zinc) or rechargeable (nickel-cadmium) batteries.



MOUNTING ON THE WALL

1. Drill 3 holes on the wall where the fan intended to be mounted, and insert the 3 drywall plugs into the hole;
2. Fix the fan bracket on the wall with inserting and tightening the screws provided into the drywall plugs;
3. Hang the fan upward onto the wall bracket and tighten the white screw nut provided to secure the fan.



TIMER

Press the Timer button repeatedly to change the timer setting. The timer starts from 0.5h and the maximum is 7.5h.

ON/SPEED

Press the ON button on the remote. The fan will start to operate at a low speed if it is the first time you have plugged it in. If the fan was plugged in before, it will operate at the speed as last turned off.

After starting the fan, this ON button is for setting the speed. Press this button repeatedly to switch the speed from from “LO-ME-HI” .

OSCILLATION

Press the OSC button on the remote to control the oscillation of the fan. Press the button again when the fan head turns to your desired angle and the fan will stop oscillating.

OFF

Press the OFF button to turn the fan off.

FUNCTION MODES

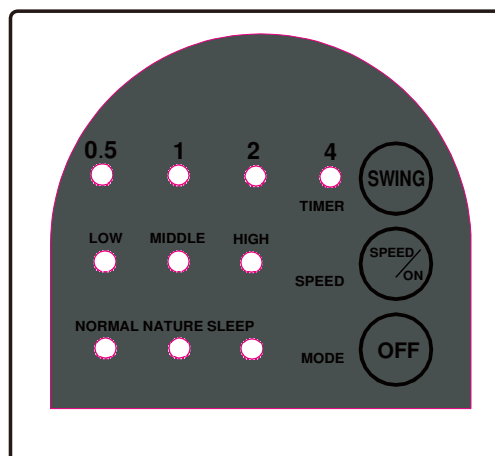
This fan has three different modes: NORMAL, NATURAL BREEZE and SLEEP. Each mode functions differently.

NORMAL WIND-The fan will deliver constant airflow on high, medium or low speed settings;

NATURAL WIND-The fan delivers airflow consistent with natural wind. The airflow cycles from high speed to low speed, repeating the cycle to create a natural breeze in the environment;

SLEEP WIND-The fan will reduce airflow step by step until the fan shuts off.

OFF-The fan will completely turn off.



USER SERVICING INSTRUCTIONS

1. Grasp plug and remove from the receptacle or other outlet device. Do not unplug by pulling on cord;
2. Open fuse cover. Slide open fuse access cover on top of attachment plug towards blades.(see fig.1)
3. Remove fuse carefully. Remove the fuse by prying out carefully(see fig.2), and replace with new fuse;
4. Close fuse cover. Slide closed the fuse access cover on top of attachment plug.(see fig.3);
5. Risk of fire. Do not replace attachment plug. Contains a safety device(fuse) that should not be removed. Discard product if the attachment plug is damaged.



Fig. 1



Fig. 2



Fig. 3