

Built to last—and to your preferences.

All of our cabinets feature quality construction, as well as options to fit your style and budget. Think about what's important to you. Then talk to a **Home Depot kitchen designer** about what options are best for you.

Good to Know

- While we try to match wood grains as closely as possible, the variations are part of what makes our quality wood products so distinctive and beautiful.
- Over time, exposure to sunlight, smoke and chemicals may cause some finishes to fade or vary from their original color.
- Cabinets purchased at a later date may not exactly match cabinets installed now.
- Order a sample door at woodmarkcabinetry.com. Color may vary slightly from the cabinets you receive upon shipment.
- Read all cabinet cleaning agent instructions carefully before using them.

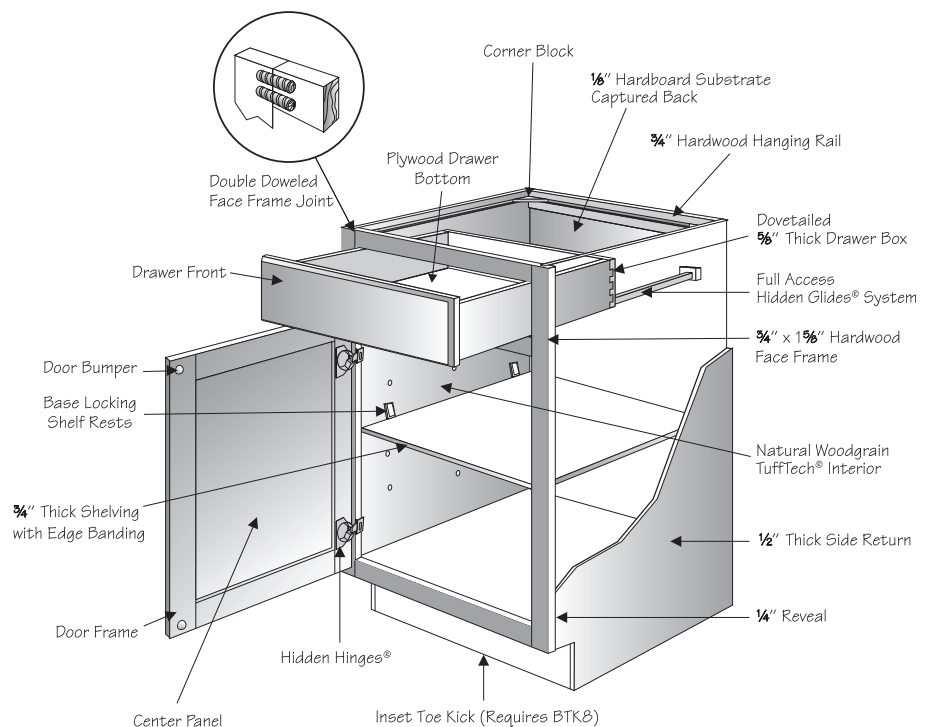
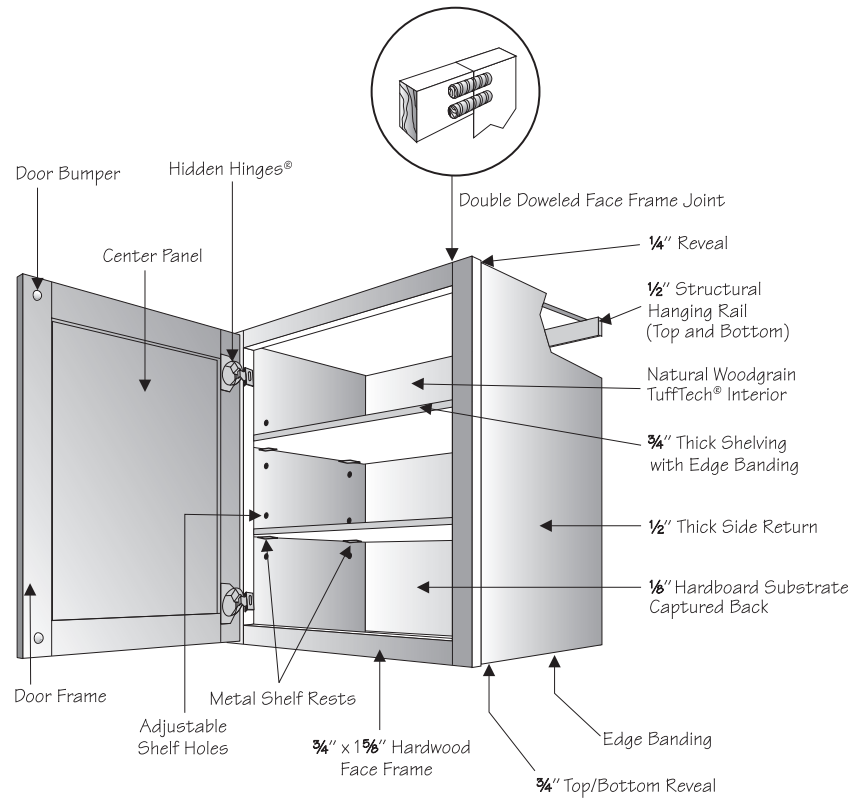
Keep it Quiet with CushionClose®

Enjoy the whisper-quiet luxury of a complete CushionClose kitchen. With smooth, self-closing performance, CushionClose reduces slams, noise and finger pinching. This unique technology comes automatically on all doors, drawers and roll outs, unless de-selected as an option.

Lifetime Limited Warranty

We want you to be happy with your American Woodmark cabinets, so we stand behind every one with our warranty. Our warranty runs for as long as you own your home and begins upon the date of delivery to you. For details and disclaimers, please visit woodmarkcabinetry.com and look for Warranty Information located in the About Us section.

Woodmark^{AMERICAN}



Standard Construction

- 1/2" engineered wood sides with TuffTech® finish.
- Full Access Hidden Glides® System.
- 3/4"-thick engineered wood shelving with edge banding.
- Adjustable drawer front with 5/8" dovetail box and plywood bottom.
- Double doweled 3/4" x 1 5/8" hardwood face frame joint.
- 1/2" engineered wood inset toe kick.

Quality Features

- Full Access Hidden Glides® System.
- Hardwood drawers with dovetail construction.
- 6-way adjustable hinges.
- Solid, kiln-dried face frames.

Plywood Ends Option

- 1/2" plywood sides.



All Plywood Construction Option

- 1/2" plywood sides, floors and cabinet tops.
- 3/4"-thick plywood shelving with edge banding.
- 1/2" plywood inset toe kick.

All Plywood Construction refers to the cabinet box components and shelving as detailed in our specification guide (woodmarkcabinetry.com/specguide.asp). Plywood components meet the Decorative Hardwoods Association's standards for hardwood and decorative plywood (www.decorativehardwoods.org).

Furniture Ends Option

These 3/4" plywood sides provide a furniture look on exposed cabinet ends and make molding installation easier — a real time saver.

Partial vs. Full Overlay Doors

Different looks are achieved by using partial or full overlay. These terms refer to the size of the doors and drawer fronts, which determines how much of the cabinetry frame shows.



Partial Overlay

In partial overlay (also referred to as standard or traditional overlay), about an inch of the cabinetry frame is visible around the doors and drawers.



Full Overlay

In full overlay, the doors and drawer fronts are larger and cover nearly all of the cabinet framework.

Premium Finishes*

Painted and glazed finishes bring a deeper richness and luxury to your cabinetry. These hand-applied finishes vary by style. More intricate cuts will show more dramatic effect.



*Not all premium finishes are available in all collections.

Characteristics of Species

Every material we offer has its own unique qualities and features. Choosing is just one more way you can get the exact performance and look you want.

Painted finishes combine hardwoods and engineered materials including solid wood, medium density fiberboard (MDF), high density fiberboard (HDF) and similar materials to achieve a product with superior stability, consistency, coverage and durability. Features described below are typical and not considered defects:

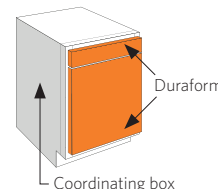
- Joint lines caused by the natural expansion and contraction of wood
- The natural aging process may change the tone of paint colors over time

Maple has a fine grain. An exceptionally hard wood, its natural colors range from creamy white to light blonde to dark reddish brown. Darker stains reduce the natural color variations.

Cherry is close-grained with occasional pin knots and variations. It ranges in color from pale yellow to deep reddish brown. Stains reveal its subtle variations, which tend to darken over time.

Oak has a prominent grain. Light colored stains accentuate the color differences in its open and closed grain areas. Darker stains offer a more uniform appearance.

Duraform® uses foils and coatings bonded to warp-resistant composite wood. Advanced technology provides consistent finishes that are durable, easy to clean and resistant to heat, humidity and fading. Available in Linen, Silk, Stone, and Breeze on coordinating Linen box, Drift on coordinating Harbor box, and Cascade on coordinating Espresso Box.



AMERICAN
Woodmark®



American Woodmark has been certified by the Kitchen Cabinet Manufacturers Association (KCMA) for its use of environmentally responsible materials in its cabinetry.