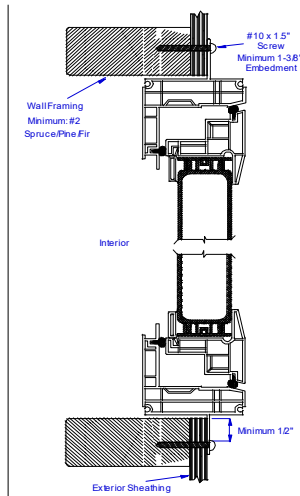
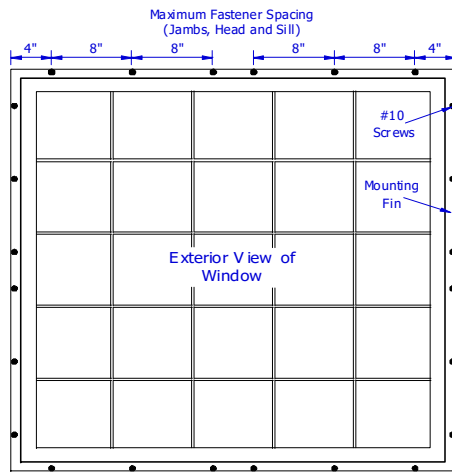


Installation Instructions For Windows With Mounting Fin

Includes all of the following series:

Breeze-Lite Casement and Awning



Note: We strongly recommend the use of flashing and/or flashing tapes and sill pans as stated in ASTM E 2112-01. However, due to variation in codes and building types, it is left up to the end user to determine the proper installation of these items.

LEAVE THE BUBBLE WRAP ON! Before installing your window, the bubble wrap may be peeled back for inspection, but please re-stick the wrap to protect the blocks from scratches and other damage until construction is complete.

Step 1 Measure to be sure the opening is 3/8" to 1/2" larger than the window size both vertically and horizontally.

* Though not required, you may wish to pre-drill the installation holes in the fin at this time.

Disregard the pre-punched holes in the mounting fin, as they are not necessarily spaced correctly.

Step 2 It is recommended that the screen be removed until construction is complete to avoid damage. This is done by pulling up and toward you with the tabs until the screen comes out. Take care not to bend the screen frame.

Step 3 Apply a generous bead of silicone to the backside of the mounting fin. Use enough silicone to sufficiently fill all voids between the fin and the wall sheathing. You may wish to place shims in the sill of the opening to help center the window in the opening.

Step 4 Insert the window into the opening from the outside. The window is labeled "inside" and "outside", but if these labels have been removed, the latches and crank should always be to the inside of the building. Make sure the window is fully closed and latched.

Step 5 Using a level on the hinge side, make sure the window is plumb in the opening.

Step 6 Once the unit is plumb, install #10 x 1.5" screws in the hinge jamb 4" from the top and bottom. Re-check for plumb and re-adjust if necessary. Now install screws every 8" in the HINGE JAMB ONLY working from the corner screws toward the center.

Fastener quantities needed in each side of frame to achieve 8" spacing

Length of Frame Member	10"	18"	26"	34"	42"	50"	58"	66"	74"	82"	90"	98"
Number of Fasteners	2	3	4	5	6	7	8	9	10	11	12	13

Step 7 Unlatch the window and, from the outside, move the latch side jamb up or down to create an equal gap at the top and bottom of the window between the frame and vent. Install screws 4" from the top and bottom of the latch jamb.

Step 8 Operate the window in and out and latch and unlatch the window several times to be sure operation is smooth with no binding or dragging. If there is any problem make adjustments now, if not, proceed to step 8.

Note: All adjustments must be done now!! No adjustments are possible once construction is complete.

Step 9 Install screws in the latch jamb starting from the corner screws every 8" to the center of the jamb.

Step 10 Now install screws 4" from the corners on the head and sill, then every 8" toward the center of the frame member.

Step 11 Remove excess silicone "squeeze out" from around the fin and inspect for holes or voids. Use silicone to fill any voids.

If desired, a foam insulation can be applied to the interior gap between the window and wall framing. If applied, *this must be the*

NON EXPANDING TYPE FOAM.

Step 12 Since these windows are typically used in rooms with high moisture, ie; bathrooms, it is recommended that the interior gap between the window and wall framing also be sealed with silicone and tooled so as not to interfere with the installation of wallboard, tile or trim.

Step 13 Once all construction is complete, remove the bubble wrap from the inside and outside of the window. If necessary, clean the blocks with a mild detergent and warm water using a soft cloth. Then reinstall the screen by aligning it with the inside of the window frame and pressing it into the opening.

Failure to follow these procedures will void any and all warranties.