

Before you begin

3D-GUIDED INTERACTIVE ASSEMBLY INSTRUCTIONS CAN BE FOUND ON **BILT**
DOWNLOAD THE **FREE** APP



SKU#1006 128 759

SET-UP AND OPERATING INSTRUCTIONS
FOR THE 5 FT BONE THRONE
INSTRUCTION MANUAL

Questions, problems, missing parts? Before returning to your retailer, call our customer service department at 1-877-527-0313, 8 a.m. to 5 p.m., EST, Monday-Friday or email at info@pan-asian.com.hk.

WARNING: This is not a toy and is for decorative purposes only. For indoor and outdoor use. This item is not intended for use by children under the age of 14 years. Do not place product near an open fire or heat source such as a radiator, stove, etc.

| | | |
|--------------------------------------|--|--|
| A. Legs X 4 | B. Seat X 1 | C. Left Arm Piece X 1 |
| D. Right Arm Piece X 1 | E. Throne Back-Lower X 1 | F. Throne Back-Top X 1 |
| G. Seat Cushion X 1 | H. Large Screws X 2 | J. Small Screws X 6 |
| | | I. Plastic Screwdriver X 1 |

READ CAREFULLY & RETAIN FOR FUTURE REFERENCE!

04252021_2008482
Printed in China

1

ASSEMBLY:

Step 1

Step 2

Step 3

2

Step 4

Use the plastic screw driver (I) and 4 x small screws (J) to securely fasten the left arm piece (C) and the right arm piece (D) to the seat (B) as shown. DO NOT OVERTIGHTEN

Step 5

Step 6

Use the plastic screw driver (I) and 2 x large screws (H) to securely fasten the left arm piece (C) and the right arm piece (D) to the throne back-lower (E) as shown. DO NOT OVERTIGHTEN.

3

Step 7

Step 8

Use the plastic screw driver (I) and 2 x small screws (J) to securely fasten the throne back-top (F) to the throne back-lower (E) as shown. DO NOT OVERTIGHTEN.

Step 9

Fully Assembled Product

4

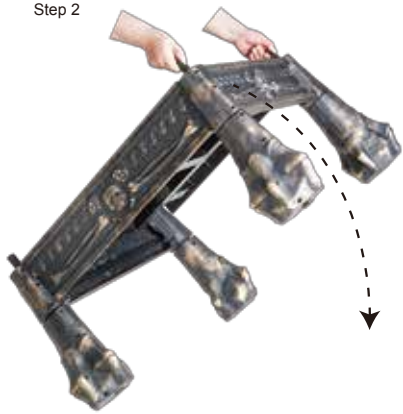
Note: Bone Throne holds up to 250 lbs

ASSEMBLY:

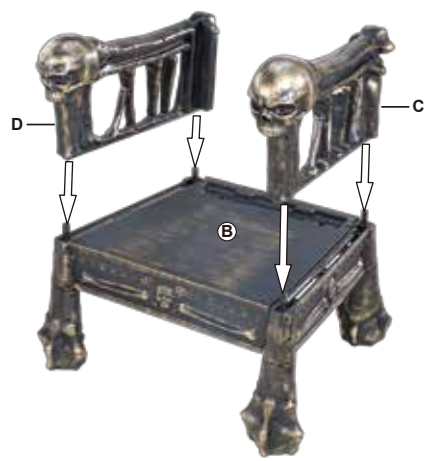
Step 1



Step 2

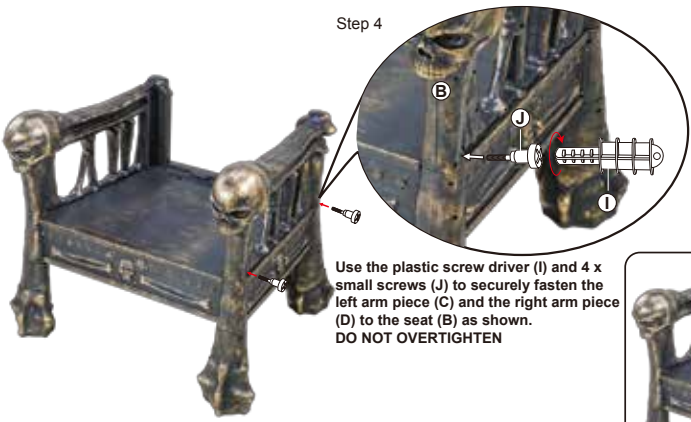


Step 3

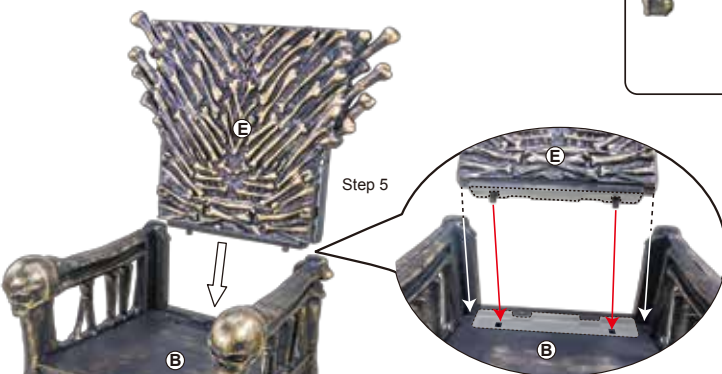


1

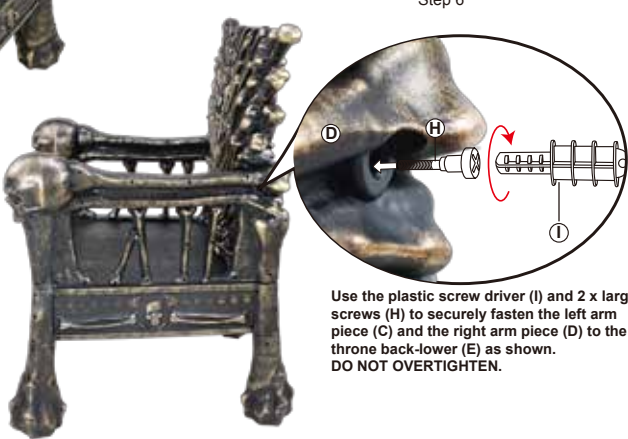
Step 4



Step 5



Step 6

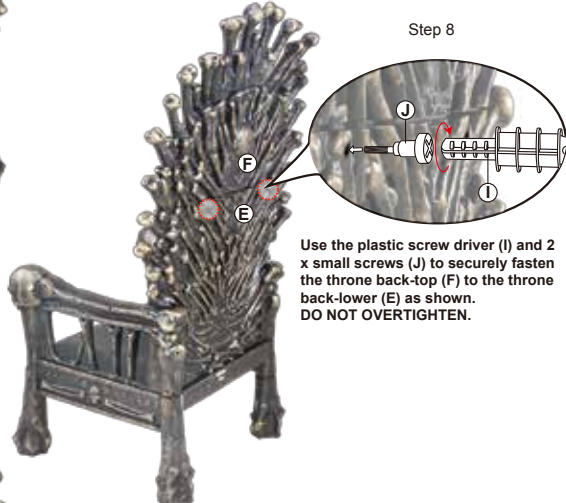


2

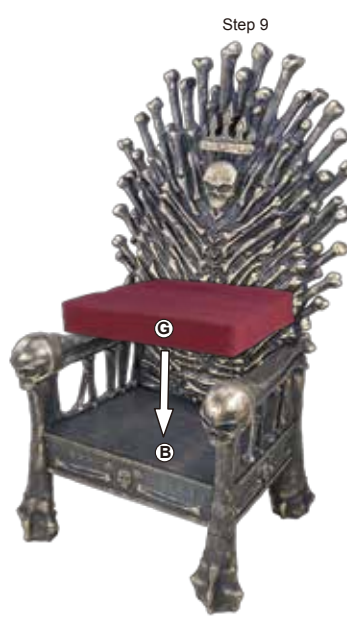
Step 7



Step 8



Step 9



Fully Assembled Product

Note: Bone Throne holds up to 250 lbs

3