



**LIVE  
FLAVOR  
FULL**

**Traeger Pellet Grills LLC**  
1215 E. Wilmington Ave  
Salt Lake City, UT 84106

**traegergrills.com**

**08/2018**



**Wood Fired Grills – Ranger**

# ASSEMBLY GUIDE

**IMPORTANT, RETAIN FOR FUTURE  
REFERENCE: READ CAREFULLY**

Please read this entire manual before installation and use of this pellet fuel-burning appliance. Failure to follow these instructions could result in property damage, bodily injury, or even death. Contact your local building or fire officials about restrictions and installation inspection requirements in your area.

**A MAJOR CAUSE OF FIRES IS FAILURE  
TO MAINTAIN REQUIRED CLEARANCES  
(AIR SPACES) BETWEEN COMBUSTIBLE  
MATERIALS. IT IS OF UTMOST  
IMPORTANCE THAT THIS PRODUCT  
BE INSTALLED ONLY IN ACCORDANCE  
WITH THESE INSTRUCTIONS.**

**WARNING!**

Many parts of the grill will become very hot during operation. Care must be taken to avoid burns, both during operation and afterwards, while the grill is still hot.

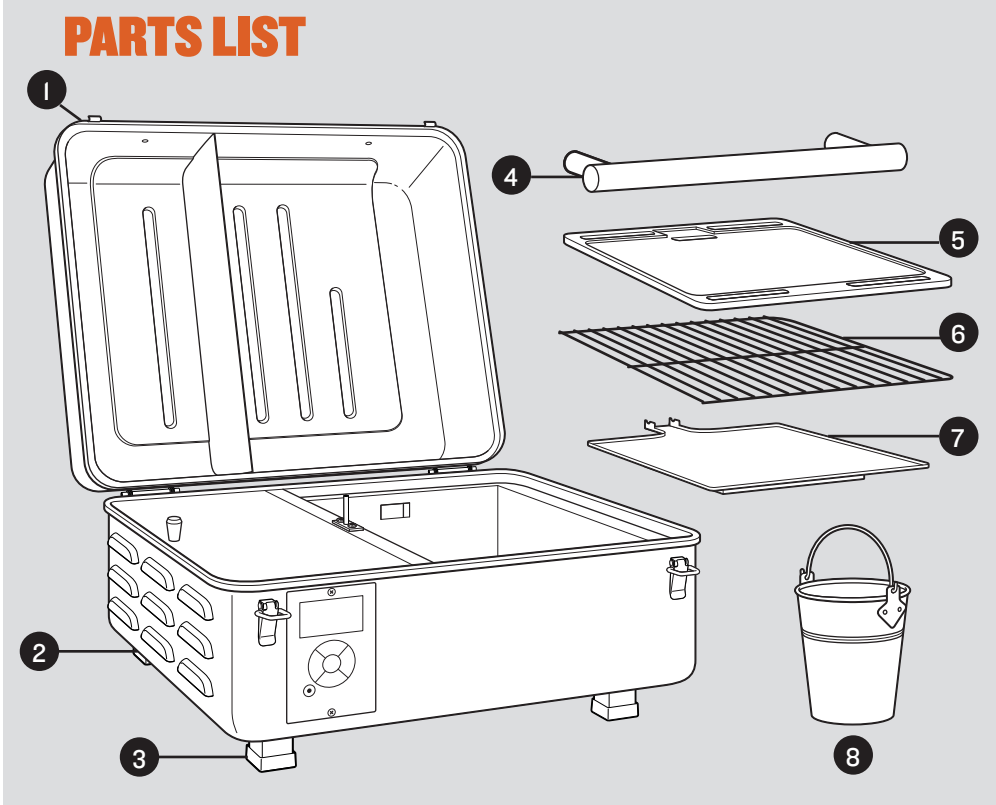
- Never leave the grill unattended when young children are present.
- Never move the grill when it is operating.
- Let the grill cool completely before moving or attempting to transport.
- **Grill is very heavy. Always lift grill with TWO people.**

For English-only assistance  
with assembly, installation, parts,  
and customer service, contact  
**Traeger's VIP-365 Customer Service.**

**Phone:** 1-800-TRAEGER  
**Email:** [service@traegergrills.com](mailto:service@traegergrills.com)  
**Mail:** Traeger Pellet Grills LLC  
1215 E. Wilmington Ave.  
Salt Lake City, UT 84106

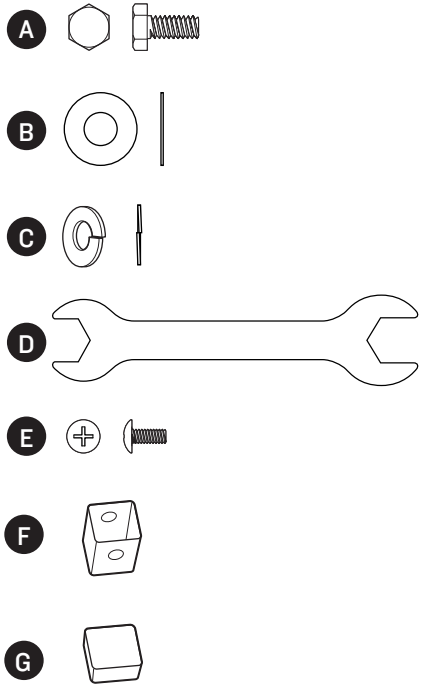
**traegergrills.com**

**TFTI8KLD**



PART	DESCRIPTION
1	Grill Lid
2	Grill Body
3	Feet with Caps
4	Lid Handle
5	Cast-Iron Griddle
6	Grill Grate
7	Grease Drip Tray
8	Grease Bucket

BLISTER PACK PARTS NEEDED

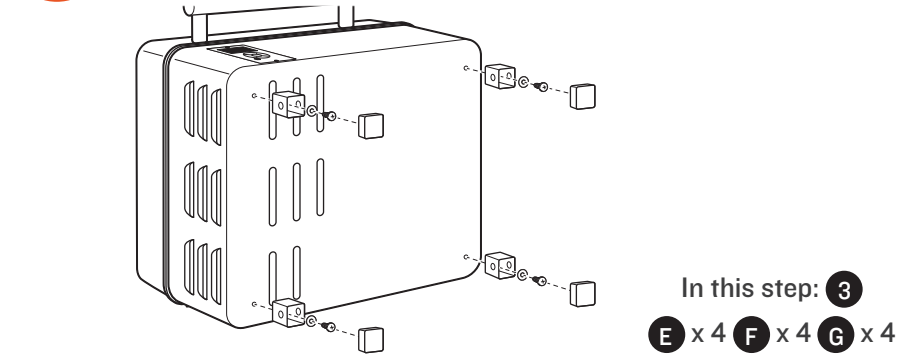


PART	DESCRIPTION
A	Bolts: 1/4-20 x 3/8" (2 pcs.)
B	Washers: 1/4" (2 pcs.)
C	Lock Washers: 1/4" (2 pcs.)
D	Wrench
E	Phillips Head Screws (4 pcs.)
F	Feet (4 pcs.)
G	Caps (4 pcs.)

READ ALL INSTRUCTIONS BEFORE INSTALLING AND USING THE APPLIANCE

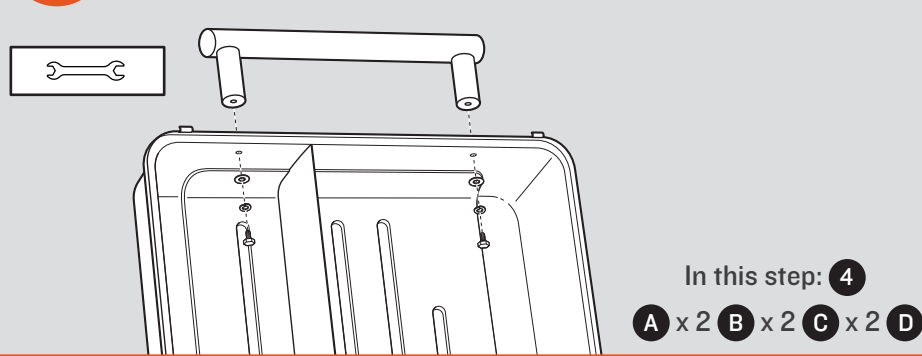
Traeger'ing is more fun with friends! (No, really, you will need two people to lift the grill.)

1 INSTALL FEET

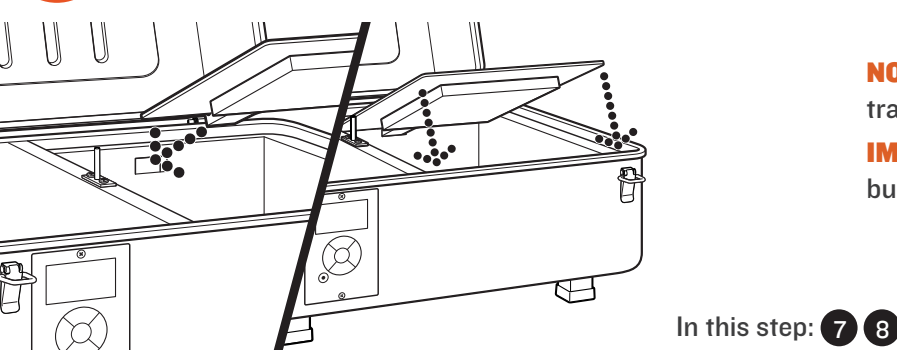


**NOTE:** You should assemble grill on a clean, flat surface, as you will need to lay it on its back during assembly.

2 ATTACH LID HANDLE

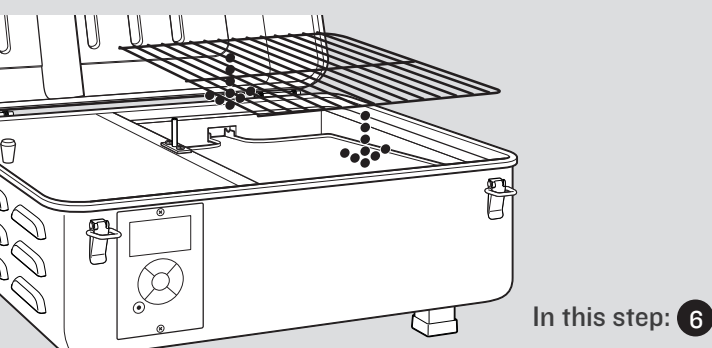


3 PLACE GREASE DRIP TRAY AND BUCKET



**NOTE:** Be sure the grease drain spout on the grease drip tray extends through the opening in the back of the grill.  
**IMPORTANT:** Always be sure to position the grease drain bucket under the spout during use!

4 INSTALL GRILL GRATE



**You are ready to season your grill and get Traeger'ing!**  
Refer to your Owner's Manual for operation instructions.