

FLOAT 'N' GRILL®

DO NOT DISCARD

You will need this serial number for any warranty claims, returns, recalls, etc.

Thank you to everyone who has supported us over the years.



Please review the “Safety Warnings” and handling precautions on pages 6 – 11 before using this product.

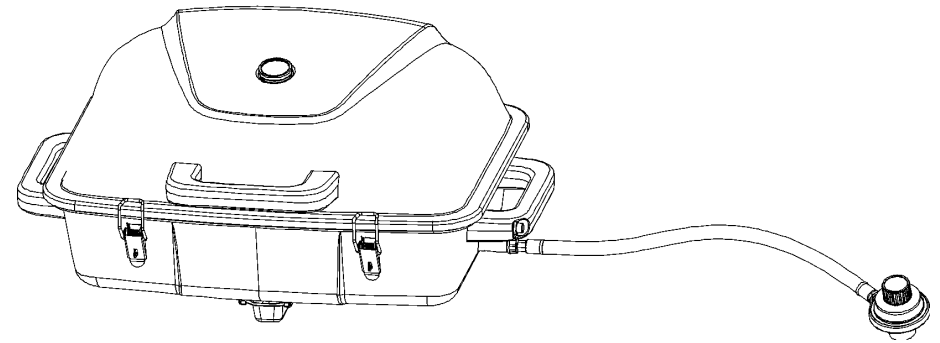
Basic Instruction Manual

This basic instruction manual covers only the most basic operations.

Contents

Basic Instruction Manual	2
Contents	2
Trademarks	3
Introduction	4
Refer to This Manual Before...	5
Testing the Product Before Use	5
Instruction Manuals	6
Item Checklist	6
Assembly Instructions	8
Safety Warnings	10
Gas Grill Assembly	16
Package Contents	19
Illustrated Parts List	20
Hardware List	21
Preparation	22
Assembly Instructions	22

Fully Assembled View



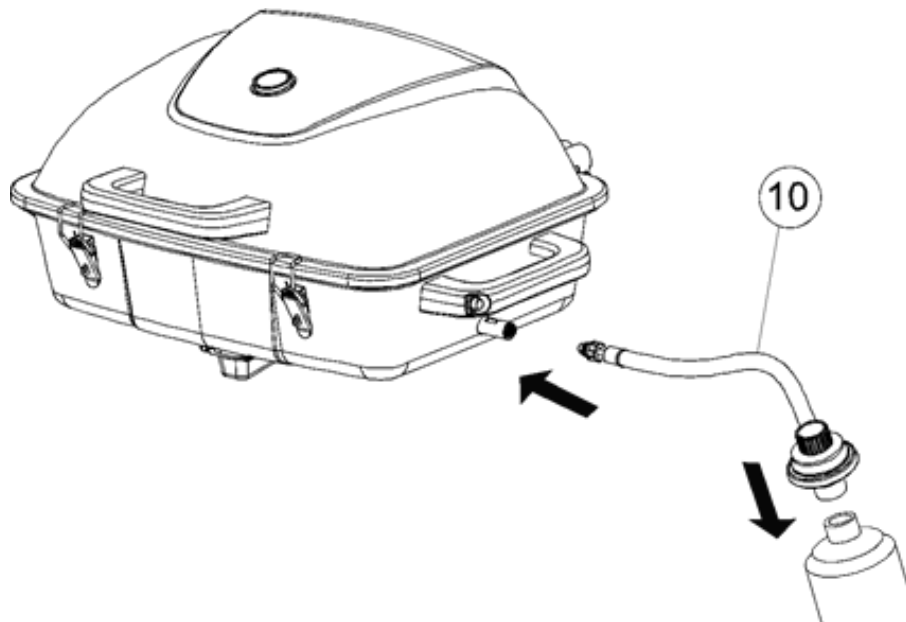
Please contact the manufacturer if you are missing any parts or have any trouble assembling your grill.

www.FloatNGrill.com

Help@Floatngrill.com

Step 9 Regulator Assembly

- A. Check the regulator is set to **OFF**.
- B. Screw the regulator (10) into the threaded venture tube of the burner.
- C. Screw the gas cylinder counterclockwise into the thread underneath the regulator valve until it is in place.
- D. Make certain the connection is secure and conduct the leak test.



Trademarks

Float’N’Grill is a trademark of Float’N’Grill LLC
All corporate and product names and trademarks mentioned in this manual are the property of their respective owners.

Introduction

The Float’N’Grill is a floating base with detachable grill designed to float on the water for use at sandbars, rivers with a rapid class rating equal to or less than 1, in-land lakes and other calm bodies of water. It can be used while fishing, lounging at the sandbar, or floating down a lazy river.

DO NOT attempt to use the grill while actively floating down any river. Be sure to completely stop floating the river before attempting to use the Float’N’Grill.

A class 1 rapid rating is defined as “Fast moving water with riffles and small waves. Few obstructions, all obvious and easily missed with little training. Risk to swimmers is slight; self-rescue is easy.”

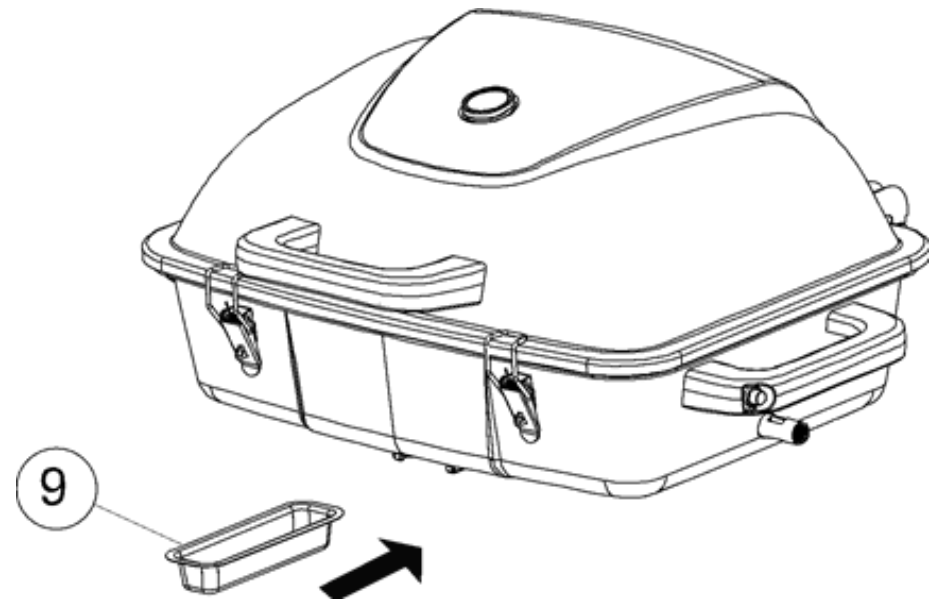
Rapid class ratings can be found here:

[https://www.americanwhitewater.org/content/Wiki/safety:start?
#vi. international scale of river difficulty](https://www.americanwhitewater.org/content/Wiki/safety:start?#vi.international%20scale%20of%20river%20difficulty)

Please note the above website is in no way affiliated with Float’N’Grill LLC nor does Float’N’Grill LLC maintain any part of the website above. It is recommended that the consumer use the Float’N’Grill apparatus at their own discretion when floating down any river.

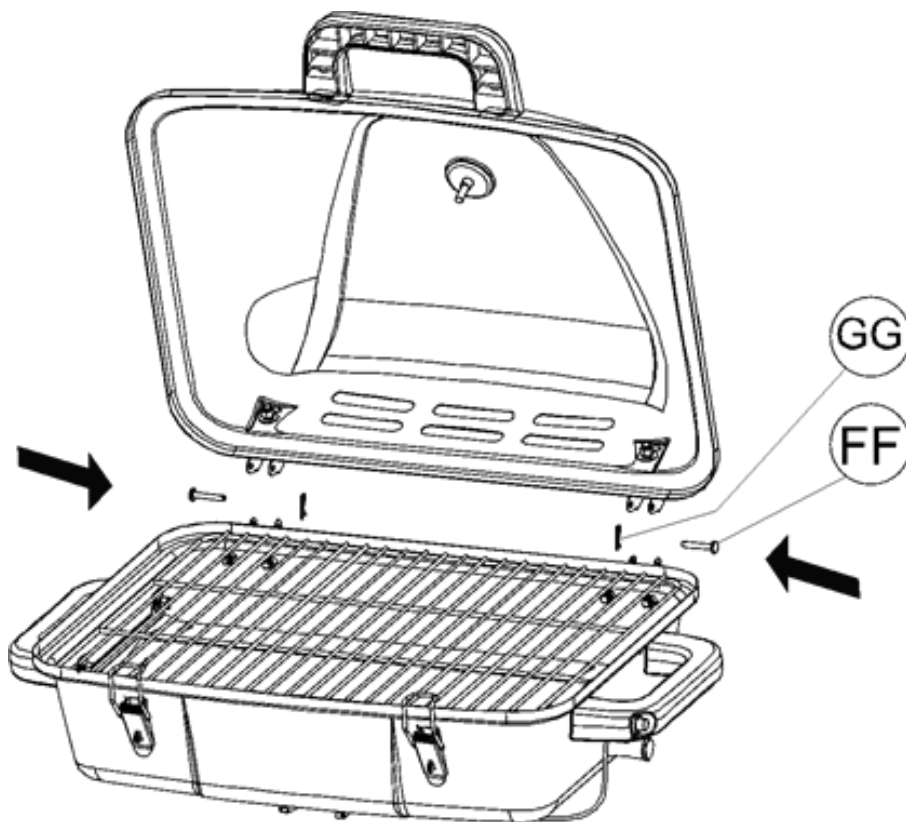
Step 8 Grease cup Assembly

Insert the grease cup (9) into place on the support as shown.



Step 7 Lid & Firebox Assembly

- A. Place the Lid assembly onto the firebox, taking care to align the lid hinges with the firebox hinges.
- B. Lock the hinges together by fitting the two hinge pins (FF) through the hinges and fixing each pin with an "R" clip (GG).



Refer to This Manual Before Using the Float’N’Grill to Further Familiarize Yourself with the Product

With the Float’N’Grill you can now grill without leaving the water. While reading this manual, look over the grill, and the floating base to ensure there are no manufacture defects (i.e. cracks, dents, etc.). If you notice any defects do not use the grill or the floating base and contact the manufacturer right away. First read the “Safety Warnings” and handling precautions on pages 6-11.

Testing the Product Before Use and Liability

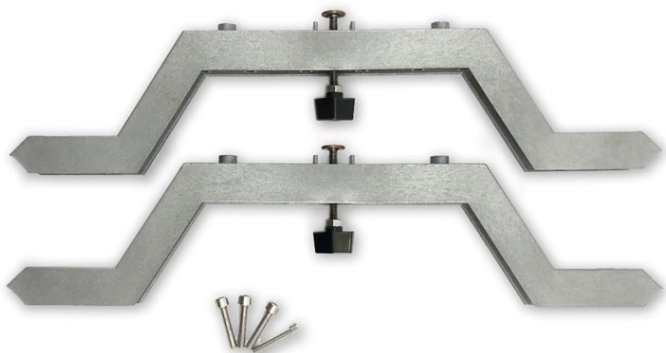
Before igniting the grill, place the Float’N’Grill in the water and verify it is stable. Make sure the grill is centered on the floating base to avoid tipping. Float’N’Grill LLC cannot be held liable for any loss or inconvenience caused.

Instruction Manuals

This Basic Instruction Manual only explains how to assemble the floating base and attach the grill. For instructions on how to assemble the grill, please see page 11.

Item Checklist

Before starting, check that all the following items have been included with your Float'N'Grill. If anything is missing, contact the manufacturer (contact information in the back of this manual).

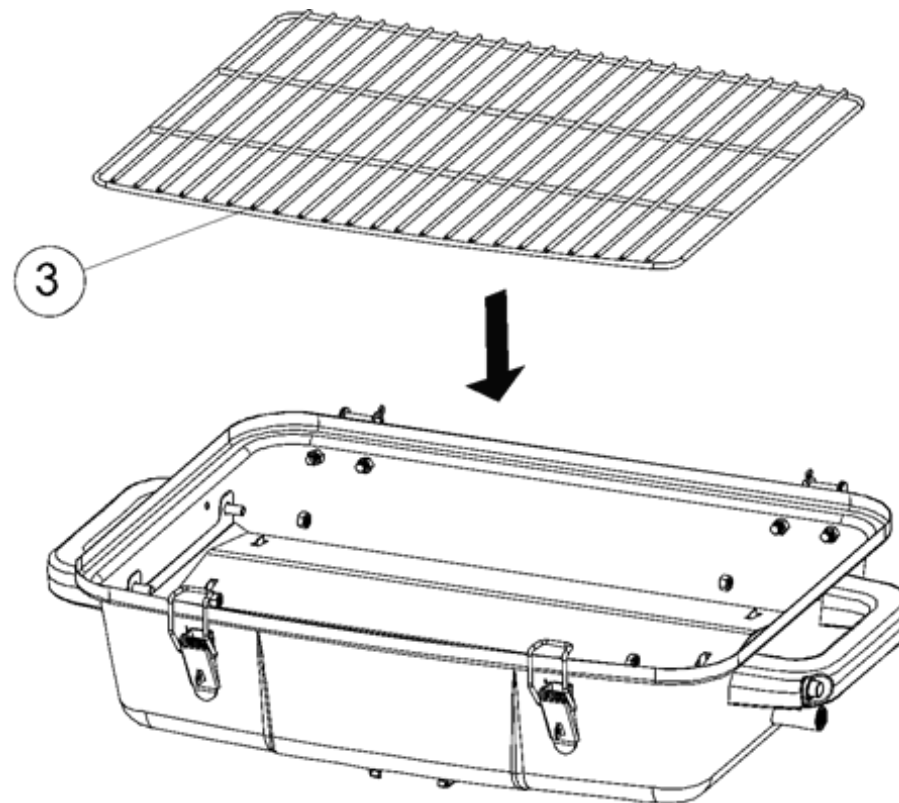


Included in the are:

- Support Bars x 2 (pre-assembled)
- Allen Bolts x 4
- Elevator Bolts x2

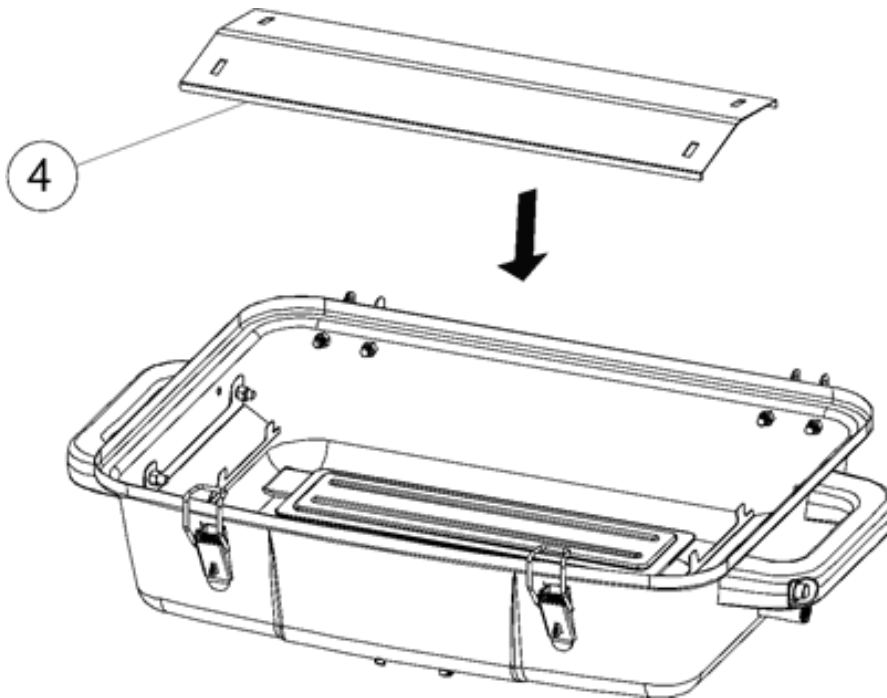
Step 6 Cooking grill Assembly

Fit the cooking grill (3) on the firebox as shown.



Step 5 Heat Plate Assembly

Fit the Heat Plate (4) onto the Heat plate brackets as shown.



Float'N'Grill base x 1

(Picture shown with support bars attached)

Assembly Instructions

Only continue with the steps below after the grill has been fully assembled.

Attached the support bars to the base using the 4 supplied Allen bolts. **DO NOT OVER TIGHTEN.**

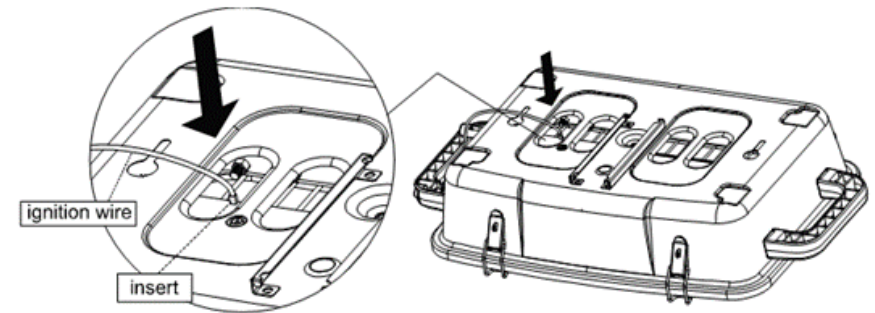
With the elevator bolts in the center of the support bars fully extended upwards, align the grill with the top of the support bars. The cut-out slots on the bottom of the grill will fit over top of the elevator bolts, and grill will sit directly on the support bars. Once the grill is sitting on the support bars, slide the grill forward and twist the plastic turn knobs counter clock-wise to lock it into place.



Step 4 Ignition wire Assembly

Fit the ignition wire from the Right carry handle (8) into the electrode from underneath the firebox as shown.

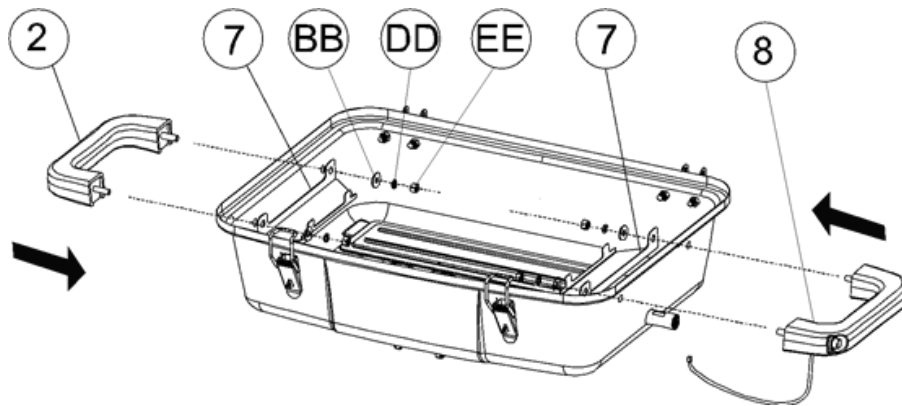
Test the spark by pushing the ignition button and adjust the electrode if necessary, to get the brightest possible spark.



Step 3 Left & right Carry Handle Assembly

Remove the pre-attached nut (EE), spring washer (DD), flat washer (BB) from the two fireboxes carry handles (2 & 8). Fit the two fireboxes carry handles (2 & 8) into the Firebox (6) and the two Heat plate brackets (7) to the inside of the firebox, and fix in this order: handle, firebox, heat plate bracket, flat washer, spring washer, nut.

(Note that the handle with the ignition goes on the right side as shown.)



Safety Warnings

Be sure to read and understand each warning, caution, and danger before using this product. Using this product without reading and understanding its warnings, cautions, and dangers, can lead to property damage, personal injury, or death.



WARNING/CAUTION



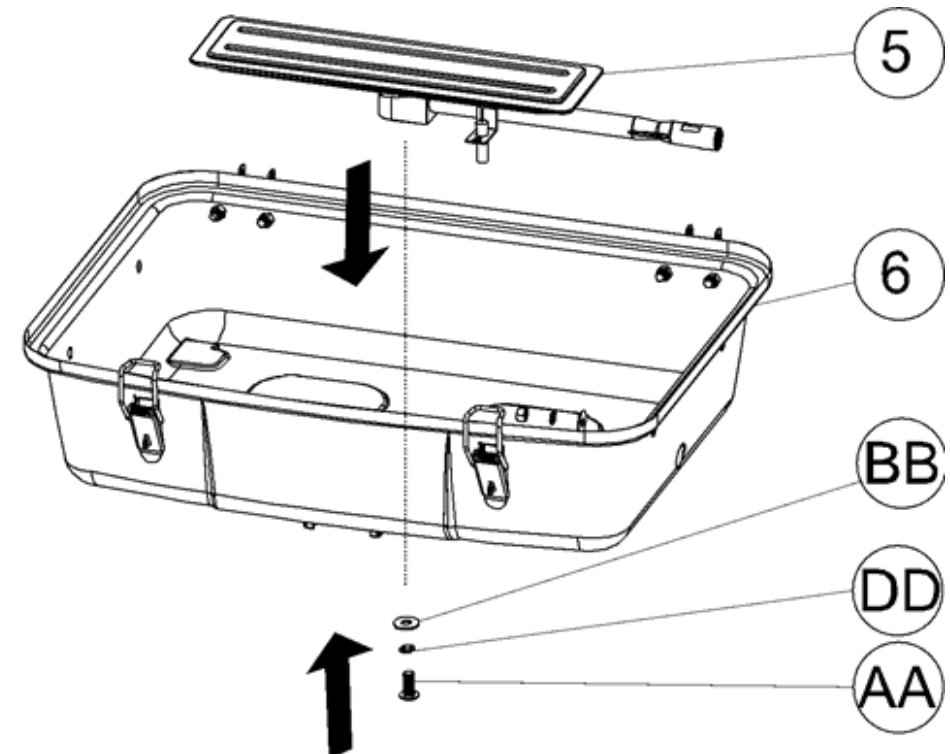
- THIS GRILL IS FOR OUTDOOR USE ONLY.
- THIS GRILL IS NOT A TOY. IT CAN CAUSE SERIOUS INJURY IF MISUSED INCLUDING MISUSE WHILE FLOATING IN WATER.
- **DO NOT** LEAVE THIS GRILL UNATTENDED FOR ANY AMOUNT OF TIME FOR ANY REASON.
- **DO NOT** USE THIS GRILL AS A FLOTATION DEVICE. IT WILL NOT SUPPORT YOU IN THE WATER AND IS NOT A PERSONAL FLOTATION DEVICE.
- ATTEMPTED USE OF THIS GRILL AS A FLOTATION MAY RESULT IN DROWNING.
- USE THIS GRILL ONLY IN APPROVED AREAS INCLUDING APPROVED AREAS ON WATER.
- KEEP A SAFE DISTANCE FROM THE GRILL WHEN IN USE. INJURY CAN OCCUR IF YOU ATTEMPT TO GRAB HOLD OF THE GRILL WHILE IT IS FLOATING IN WATER.

Step 2 Burner Assembly

Bend the pre-attached electrode as shown if necessary, to adjust the gap between the tip of the electrode and the nearest burner port to be around 5mm.

Remove the pre-attached bolt (AA), spring washer (DD) and flat washer (BB) from the Burner (5). Fit the burner into the Firebox (6), taking care that the gas tube end is fitted through the hole in the right side of the fire box. Fit the burner in place in this order as shown: bolt, spring washer, flat washer, firebox, burner.

TIGHTEN ALL BOLTS WITH THE TOOLS PROVIDED.



Preparation

Remove all contents from the carton packaging. Make sure all parts are present before attempting assembly. If any part is missing or damaged, do not attempt to assemble, install or operate the product. Contact your store of purchase for replacement parts.

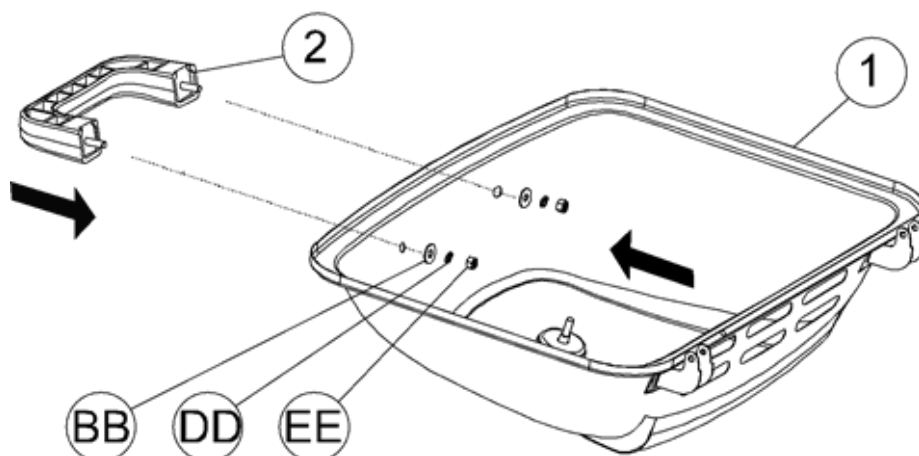
Estimated Assembly Time: 10 minutes.

Assembly Instructions

Step 1 Lid Handle Assembly

Take the pre-attached nut (EE), spring washer (DD), flat washer (BB) off the Lid Handle (2) and fit the Lid Handle (2) to the Lid (1). Fit in this order: Lid handle, Lid, flat washer, spring washer, nut.

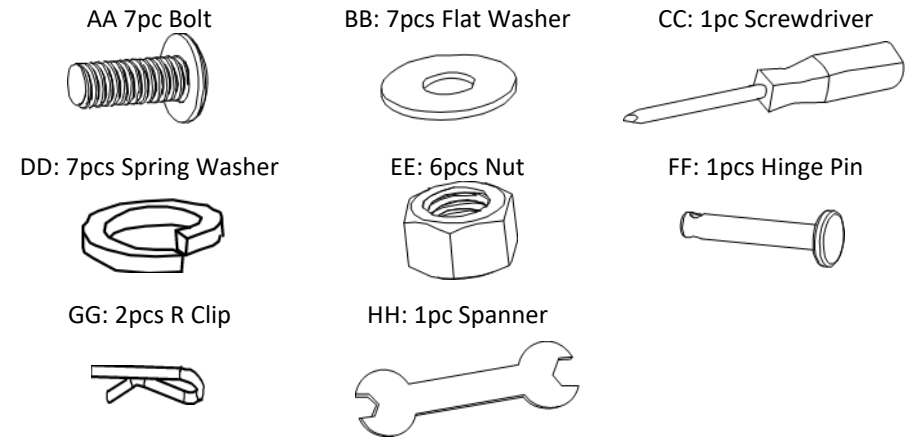
TIGHTEN ALL NUTS WITH THE TOOLS PROVIDED.



- **DO NOT** ALLOW CHILDREN TO OPERATE THIS GRILL.
- LEAVING THIS GRILL UNATTENDED CREATES A RISK OF PROPERTY DAMAGE OR INJURY TO OTHERS.
- **DO NOT** USE THIS GRILL WITHOUT USING AN ANCHOR OR A TETHER. UNSECURED GRILL WILL FLOAT AWAY AND MAY CAUSE PROPERTY DAMAGE OR PERSONAL INJURY.
- HANDLE GRILL WITH CAUTION. EXCESSIVE MOTION MAY CAUSE GRILL TO DETACH FROM FLOTATION DEVICE AND MAY CAUSE PROPERTY DAMAGE OR PERSONAL INJURY.
- NOT INTENDED FOR USE IN SWIMMING POOLS OR LARGE BODIES OF WATER.
- **DO NOT** ATTACH ANY OTHER GRILL TO THE FLOTATION DEVICE. ONLY USE THE GRILL SUPPLIED IN THE BOX.
- **DO NOT** USE IN RIVERS WITH A RAPIDS RATING GREATER THAN 1 AND EVEN THEN, USE WITH CAUTION.
- **DO NOT** PULL THE GRILL BEHIND ANY MOTORIZED WATERCRAFT.
- **DO NOT** STORE OR USE GASOLINE OR OTHER FLAMMABLE LIQUIDS OR VAPORS IN THE VICINITY OF THIS OR ANY OTHER APPLIANCE.

- AN LP CYLINDER NOT CONNECTED FOR USE SHALL NOT BE STORED IN THE VICINITY OF THIS OR ANY OTHER APPLIANCE.
- FOR RESIDENTIAL USE ONLY. DO NOT USE FOR COMMERCIAL COOKING.
- READ AND FOLLOW ALL SAFETY STATEMENTS, ASSEMBLY INSTRUCTIONS, AND USE AND CARE DIRECTIONS BEFORE ATTEMPTING TO ASSEMBLE AND COOK.
- DO NOT FULLY SUBMERGE UNDERWATER.
- FAILURE TO FOLLOW ALL MANUFACTURER'S INSTRUCTIONS COULD RESULT IN SERIOUS PERSONAL OR PROPERTY DAMAGE AND/OR DEATH.

Hardware List

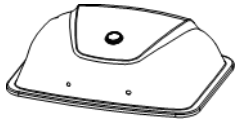


Hardware listed above is not scaled to exact size

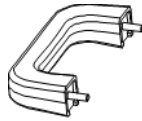
The screwdriver and the spanner are required for assembly and are included for your convenience

Illustrated Parts List

Lid—1pc



Left Carry Handle & Lid
Handle—2pc



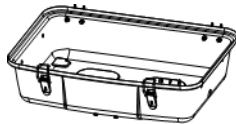
Cooking Grill—1pc



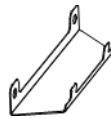
Burner—1pc



Firebox—1pc



Heat Plate Bracket—2pc



Right Carry Handle—1pc



Grease Trap—1pc



Regulator—1pc



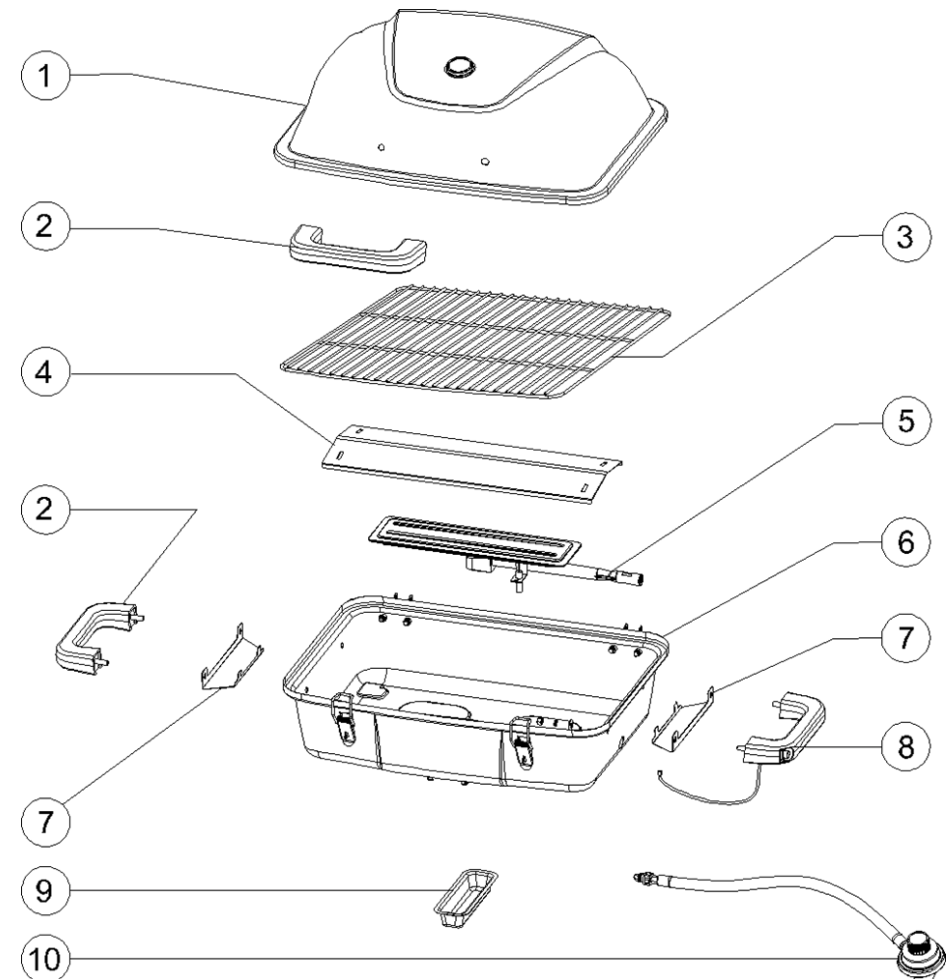
Heat Place—1pc



- FOR SAFE USE OF YOUR GRILL AND TO AVOID SERIOUS INJURY:
- **Do not** let children operate or play near grill.
- Keep grill area clear and free from materials that burn.
- Do not block holes in sides or back of grill.
- Check burner flames regularly.
- Use grill only in well ventilated space. NEVER use in enclosed space such as carport, garage, porch, covered patio, or under an overhead structure of any kind.
- Do not use charcoal or ceramic briquets in a gas grill (UNLESS BRIQUETS ARE SUPPLIED WITH THE GRILL).
- Use grill at least 3 ft from any wall or surface.
- Maintain 10 ft clearance to objects that can catch fire or sources of ignition such as pilot lights on water heaters, live electrical appliances, etc.
- NEVER ATTEMPT TO LIGHT BURNER WITH LID CLOSED. A buildup of non-ignited gas inside a closed grill is hazardous.
- Never operate grill with LP cylinder out of correct position specified in assembly instructions.
- GRILL IS NOT A PERSONAL FLOTATION DEVICE.

- **DO NOT** OPERATE UNDER THE INFLUENCE OF ALCOHOL.
- READ OPERATORS MANUAL BEFORE USE.
- KEEP CHILDREN AWAY FROM GRILL.
- LEAVING GRILL UNATTENDED MAY RESULT IN PERSONAL INJURY, PROPERTY DAMAGE, OR DEATH.
- THE USE AND OPERATION OF THE GRILL MAY ATTRACT UNEXPECTED WILDLIFE.

Package Contents



- When the grill is not in use, turn the control knob to the “OFF” position and remove the propane cylinder from the regulator. Remove the regulator from the burner.
- For outdoor use only, if stored indoors, detach propane cylinder and store outdoors. Propane cylinders must be stored out of reach of children.

IMPORTANT

First-time use: It is important that the grill be lit and allowed to heat up for at least 30 minutes before any food is placed on the cooking grid. It is normal for some smoke to appear during the initial operation of the grill. After initial heating, the grill is ready for use.

Recommended maintenance frequency: twice a year.

THIS COOKING APPLIANCE IS FOR OUTDOOR USE ONLY AND SHALL NOT BE USED IN A BUILDING, GARAGE OR ANY OTHER ENCLOSED AREA.

This instruction manual contains important information necessary for the proper assembly and safe use of the appliance.

Read and follow all warnings and instructions before assembling and using the appliance.

Follow all warnings and instructions when using the appliance.

Keep the manual for the future reference.



GREASE WARNING



- PUTTING OUT GREASE FIRES BY CLOSING THE LID IS NOT POSSIBLE. GRILLS ARE WELL VENTILATED FOR SAFETY REASONS.
- **DO NOT USE WATER ON A GREASE FIRE.**
- Personal injury may result. If a grease fire develops, turn knobs and LP cylinder off.
- **Do not** leave grill unattended while preheating or burning off food residue on HIGH. If grill has not been regularly cleaned, a grease fire can occur that may damage the product.

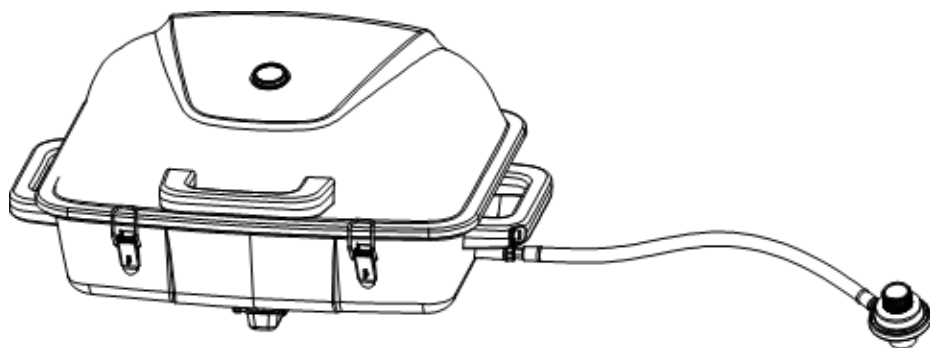


DANGER



- **IF YOU SMELL GAS:**
 1. SHUT OFF GAS TO THE APPLIANCE.
 2. EXTINGUISH ANY OPEN FLAME.
 3. OPEN LID.
 4. IF THE ODOR CONTINUES, KEEP AWAY FROM THE APPLIANCE AND CALL YOUR GAS SUPPLIER OR FIRE DEPARTMENT.

Gas Grill Assembly



DANGER



- **IF YOU SMELL GAS:**

1. SHUT OFF GAS TO THE APPLIANCE.
2. EXTINGUISH ANY OPEN FLAME.
3. OPEN LID.
4. IF THE ODOR CONTINUES, KEEP AWAY FROM THE APPLIANCE AND CALL YOUR GAS SUPPLIER OR FIRE DEPARTMENT.

Failure to follow these instructions could result in fire or explosion which could cause property damage, personal injury or death.

- Never operate this appliance unattended.
- Never operate this appliance with 25ft (7.5 m) of any flammable liquid.
- If a fire should occur, keep away from the appliance and immediately call your fire department. Do not attempt to extinguish an oil or a grease fire with water.

Failure to follow these instructions could result in fire, explosion or burn hazard which could cause property damage, personal injury or death.



WARNING/CAUTION



- **DO NOT** store propane cylinders in enclosed areas. When using a cover or moving the grill, always wait until the grill has cooled for at least 30 minutes.
- **DO NOT** obstruct the flow of combustion and ventilation air.
- A clogged tube can lead to a fire beneath the appliance.
- This unit must be kept in an area free from combustible materials, gasoline and other flammable vapors and liquids.
- Make sure all openings into the grill body are free of blockages or debris and there are no objects or materials blocking the flow of combustion or ventilation.
- Make sure the legs are in the up position when using the grill.
- Check burner air inlet openings (behind the inlet guard on the right end of the grill body) for insect nests or blockages. Make sure the slots in the burner tube are clear.