

Upgrade to 3/8" Output

To upgrade your RO output from 1/4" tubing to 3/8" tubing, please follow the simple steps below:

NOTE:

All the fittings provided for this upgrade are the Quick-Connect type fittings. So DO NOT use "inserts" or Teflon tape on these fittings. To connect the tubing, simply push the tubing into the fitting tightly. To disconnect, push down on the "Collet Ring" at the base of the fitting, hold down the ring and pull out the tubing. **(Refer to Fig. 1)**

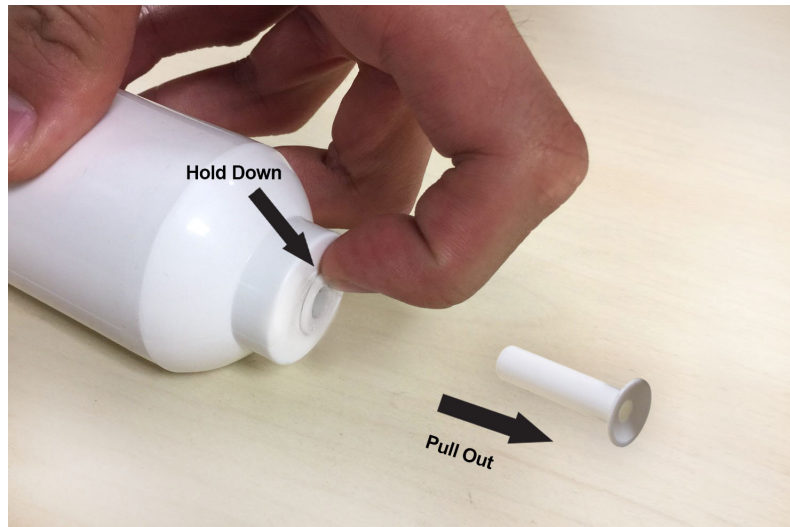


Fig. 1: How to remove tubing and end plug

- 1) Shut off the feed water line by turning the needle valve clockwise until it stops **(Point X)**. **(Refer to Fig. 2)**
- 2) Disconnect the Yellow line from the tank's on/off valve **(Point Y)**. **(Refer to Fig. 2)**
- 3) Disconnect the Output Clear line from the dispensing faucet's base **(Point Z)**. **(Refer to Fig. 2)**
- 4) Disconnect the remaining Clear line from the T-fitting of stage-5 filter (on the right hand side). **(Point F)**. **(Refer to Fig. 3)**
- 5) Remove and discard the old stage-5 filter.
- 6) Snap on the NEW stage-5 filter onto the 2 plastic brackets. Position this new filter in the same direction as the old one, with the T-fitting on the right hand side.
- 7) The T-fitting on the new stage-5 filter has a 1/4" port and a 3/8" port. The 1/4" port is for connecting the 1/4" Clear line coming from the RO head. **(Point F)**. **(Refer to Fig. 3)** The 3/8" port is for connecting the new 3/8" line provided. Connect the 3/8" Yellow line from this T-fitting to the Tank's on/off valve **(Point Y)**. **(Refer to Fig. 2)** Now the tank and the RO head are connected.
- 8) The 3/8" Clear line provided is for connecting the stage-5 filter to the Faucet. So make this connection. Use the "Reducer" fitting provided to connect the 3/8" line to the 1/4" faucet base **(Point Z)**. **(Refer to Fig. 2)** Now the stage-5 filter is connected to the dispensing faucet.
- 9) Turn on the feed water line by turning the needle valve counter clockwise until it stops **(Point X)**. **(Refer to Fig. 2)**

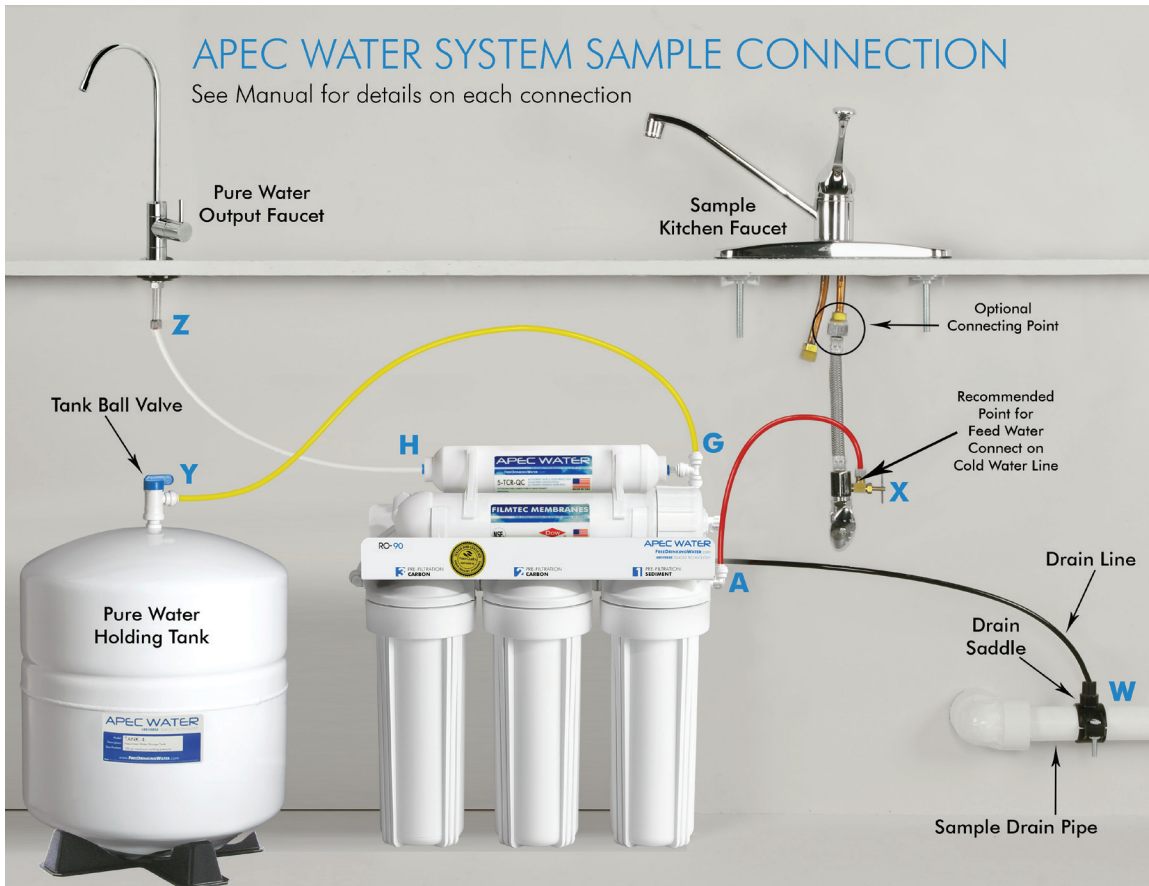


Fig. 2: Sample RO System Setup

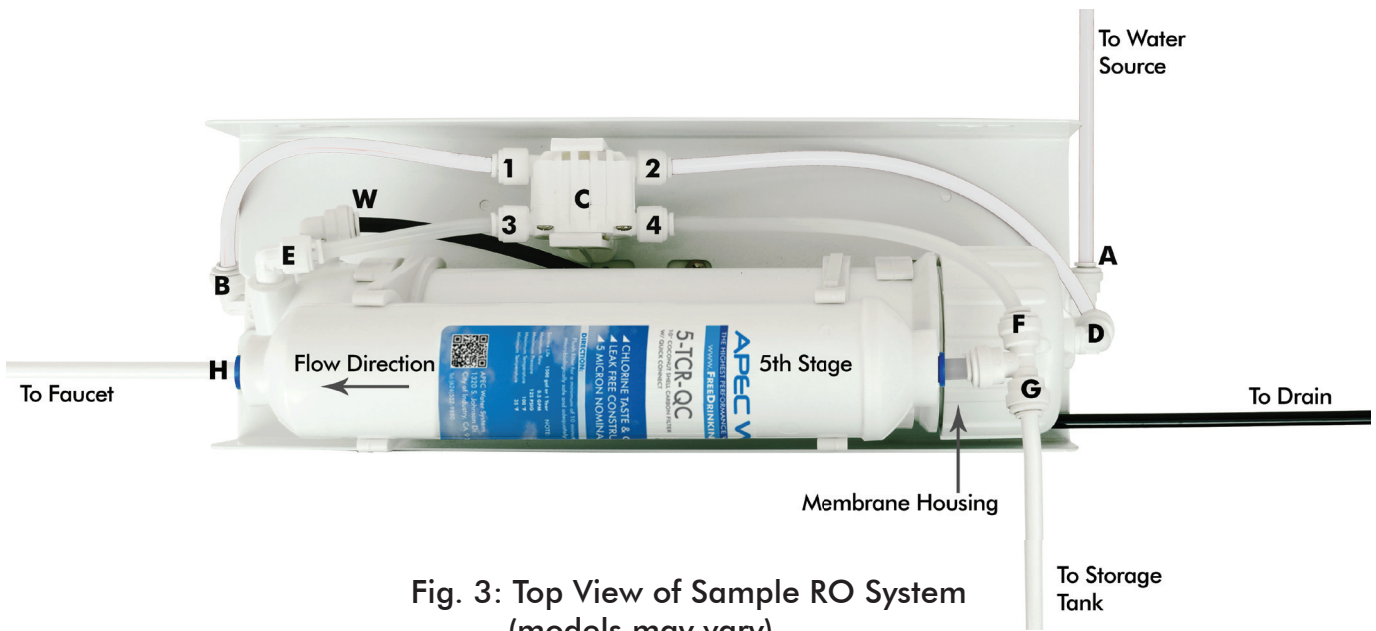


Fig. 3: Top View of Sample RO System (models may vary)