

# Use and Care Guide

## Supurr-Flex® Lint Trap Kit for indoor dryer venting

Model #LTFRHD



**EVERBILT**



## Safety Information



**WARNING:** To reduce the risk of fire or injury to persons; follow basic precautions, including the following:

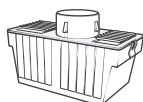
- 1) For use with electric clothes dryers only; do not use with gas clothes dryers or for any other purposes.
- 2) In small rooms open doors for adequate distribution of heat and moisture.
- 3) Some building codes may restrict the use of this product.

## SAVE THESE INSTRUCTIONS

### HARDWARE INCLUDED



Plastic clamps (2)



Plastic molded lint trap



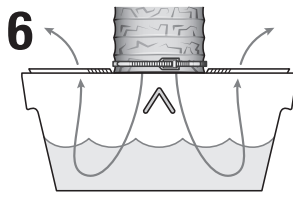
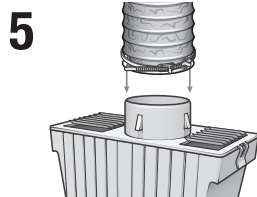
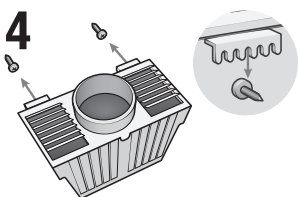
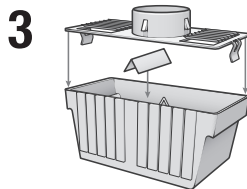
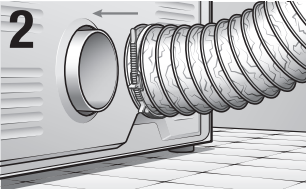
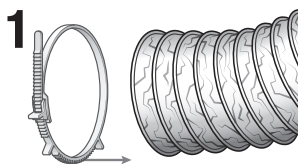
Supurr-Flex® flexible metallic duct

### TOOLS REQUIRED



Screwdriver

## Installation



### NOTE:

- Fill trap with water to 1" line indicated; replace lid.
- Replace lint filled water as needed.
- Because unit traps excessive moisture from dryer air, check water level on regular basis.

## Warranty

### WHAT IS COVERED

All merchandise is warranted to be free from defects in workmanship and material for one year from the date of purchase. This includes normal wear and performance failure on items. The manufacturer will replace or repair at their option.

### WHAT IS NOT COVERED

This warranty only covers normal wear and performance failure. It does not cover any malfunction, performance failure, or defect arising from the misuse, abuse, neglect, or modification of the product. Any damage or malfunction inflicted upon the product by the user or other external sources, or any failure to comply with the warnings and instructions, is not covered.

For further assistance visit [www.HomeDepot.com](http://www.HomeDepot.com).