

Instructions

116758 – Chrome less spray
116757 – Chrome with spray
30-K81-WNRNDCH-AD-Z – Chrome less spray
30-K81-WYRNDCH-AD-Z – Chrome with spray

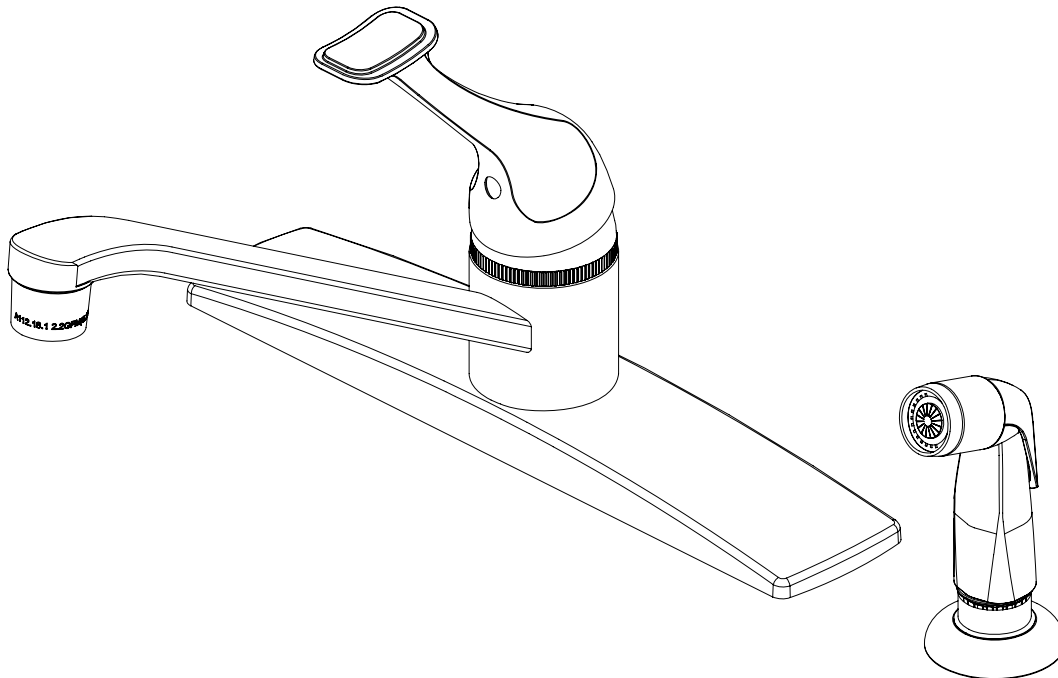
30-K81-WNRNDCH-B-Z – Chrome less spray
30-K81-WYRNDCH-B-Z – Chrome with spray



Certifications



Single Handle Kitchen Faucet with or without Black Side-Spray



*Image may vary slightly from actual product

Tools Required

Adjustable Wrench
Groove Joint Pliers
Pipe Wrench
Phillips Screwdriver
Pipe Tape or pipe thread compound



Safety Tips

If you solder the joints during installation of the faucet, the seats, cartridges, and washers must be removed before using a flame or the warranty will be voided on these parts.

Protect your eyes with safety glasses when cutting or soldering water supply lines.

Cover the sink drain to avoid losing parts.

Things You May Need

Installations may vary depending on how the previous faucet was installed. Supplies necessary for the installation of your faucet are not all included; however, they are available wherever plumbing supplies are sold.

Maintenance

Your new kitchen faucet is designed for years of trouble-free performance.

Keep it looking new by cleaning it periodically with a soft cloth. Avoid abrasive cleaners, steel wool, and harsh chemicals as these will dull the finish and void your warranty.

Important Points

Prior to beginning installation, turn off the hot and cold water lines, then turn on the old faucet to release built-up pressure. When installing your new faucet, turn the connector nuts finger tight, then use one wrench to hold the fitting and a second wrench to tighten the nut. Connections that are too tight will reduce the integrity of the system.

Wrap all threaded connections with PTFE pipe tape available at your local hardware or plumbing supply store. Always wrap in a clock-wise direction.

Contact Us

For Customer Service please call 877-319-3757, or go to homeworksww.com.

Instructions

116758 – Chrome less spray
 116757 – Chrome with spray
 30-K81-WNRNDCH-AD-Z – Chrome less spray
 30-K81-WYRNDCH-AD-Z – Chrome with spray

30-K81-WNRNDCH-B-Z – Chrome less spray
 30-K81-WYRNDCH-B-Z – Chrome with spray

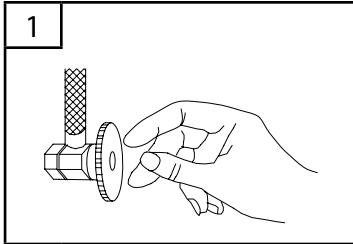


Certifications

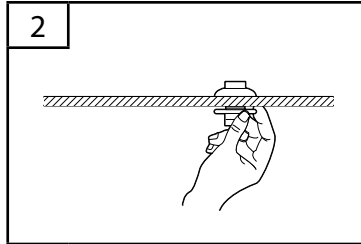


Single Handle Kitchen Faucet with or without Black Side-Spray

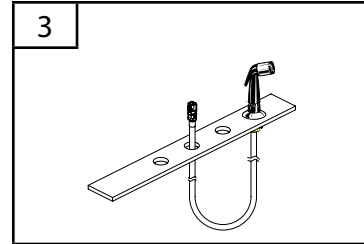
Preparation and Assembly



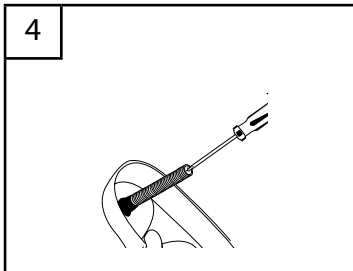
1
 Locate water supply inlet and shut off water supply valve. These are usually found under the sink or near the water heater. Remove old faucet. Clean and dry sink surface area where new faucet will be mounted.



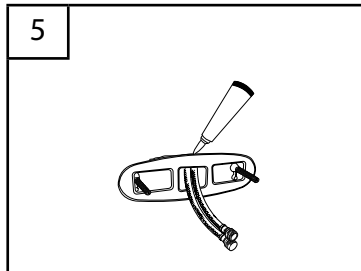
2
 If faucet is without side spray skip steps 2 and 3. Install spray head holder on far right hand hole of the sink using the mounting nut provided.



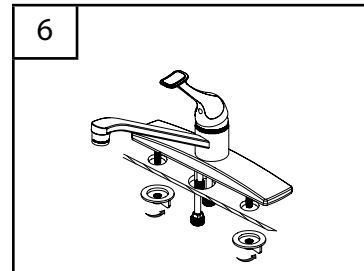
3
 Drop threaded end of the spray hose down through the holder to center of the faucet body.



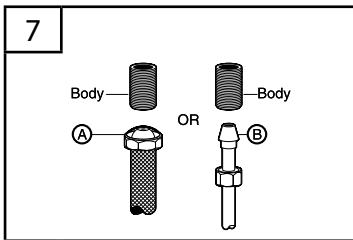
4
 Thread on mounting bolts to faucet body.



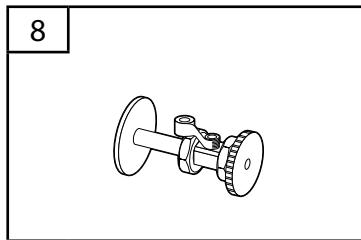
5
 Apply clear silicone latex caulk to base plate.



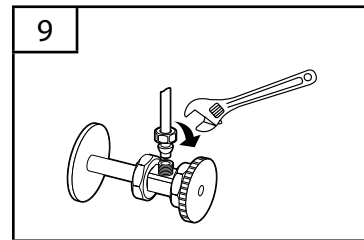
6
 Install faucet into sink by feeding all tubes down through center hole. From under sink, thread mounting nuts onto threaded metal rods and tighten nuts. Wipe away excess caulk.



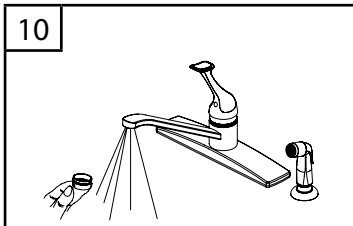
7
 Attach water supply tubes using connecting nuts provided. Connect 3/8" O.D. inlet tubes to water supplies with appropriate connections, left tube to hot water supply and right tube to cold water supply. Note A and B have to be purchased separately.



8
 Apply joint tape to shut off valve threads.



9
 Attach supply tube to shut off valve. Do not overtighten.



10
 Important: After installation is completed, remove aerator. Turn on water supply and allow both hot and cold water to run for at least one minute. While water is running, check for leaks. Replace aerator. Tighten nut slightly to stop minor leaks. If problems persist, refer to troubleshooting chart.

Troubleshooting

116758 – Chrome less spray
 116757 – Chrome with spray
 30-K81-WNRNDCH-AD-Z – Chrome less spray
 30-K81-WYRNDCH-AD-Z – Chrome with spray

30-K81-WNRNDCH-B-Z – Chrome less spray
 30-K81-WYRNDCH-B-Z – Chrome with spray



Certifications



Single Handle Kitchen Faucet with or without Black Side-Spray

Troubleshooting

PROBLEM: Leaks underneath handle.

CAUSE: Adjusting ring or cap assembly has loosened.

ACTION:

1. Move the handle to the off position. Remove handle by loosening set screw with Allen wrench (Diagram A).
2. Tighten the adjusting ring by turning it clockwise with a small screwdriver. Move the ball stem to the on position and continue tightening the adjusting ring until the leak stops draining out from around the ball stem (Diagram B).
3. If the leak does not stop, loosen the adjusting ring and tighten the entire cap assembly by turning it clockwise (Diagram C). Re-tighten the adjusting ring as before.
4. Replace the handle and tighten the set screw.

PROBLEM: Water does not completely shut off.

CAUSE: Rubber valve seat is dirty or worn, or adjusting ring or cap has loosened.

ACTION:

1. Remove the handle (Diagram A).
2. Turn off the water under the sink.
3. Unscrew the cap assembly and lift out the stem and ball stem, and the plastic and rubber cam assembly (Diagram D).
4. Inspect the two rubber valve seats for debris or damage (Diagram E). Replace with new valve seats if necessary (valve seats are available at

your local hardware or plumbing supply store). Push the rubber valve seats and springs back in place, smaller end up.

5. Take care when replacing the metal ball to align the metal peg on the side of the body with the oblong slot on the ball (Diagram F).
6. Reassemble faucet taking care to fit the small alignment tab on the cam into the slot provided (Diagram G).
7. Re-tighten the adjusting ring (Diagram H). Replace the handle and tighten the set screw.
8. Turn on the water under the sink.

PROBLEM: Aerator leaks or has an improper water flow pattern.

CAUSE: Aerator incorrectly fitted or aerator assembly is dirty.

ACTION:

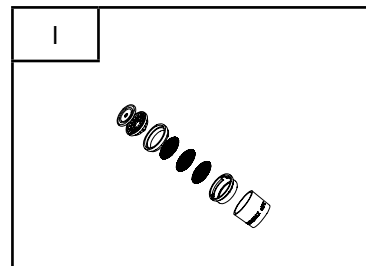
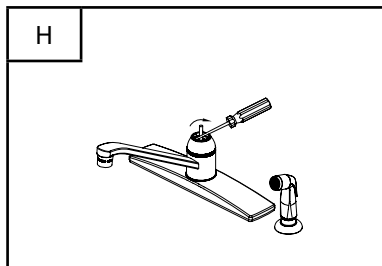
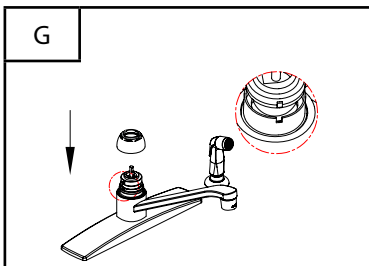
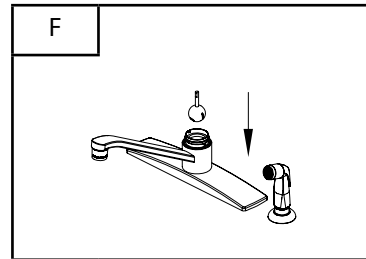
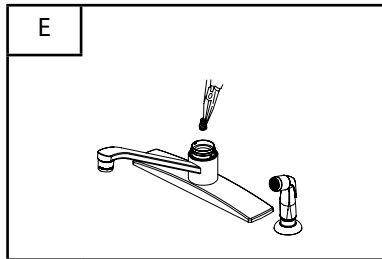
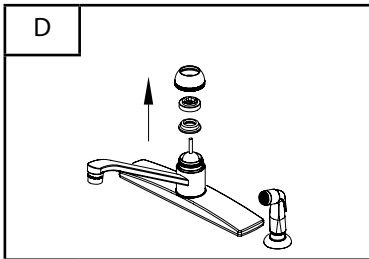
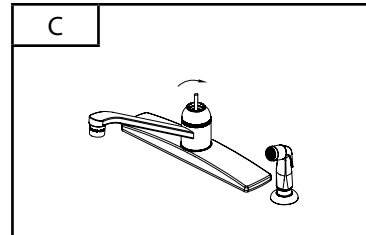
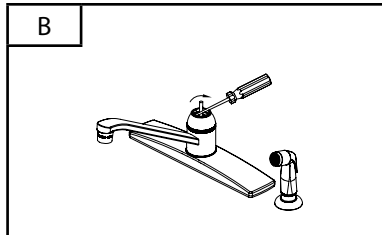
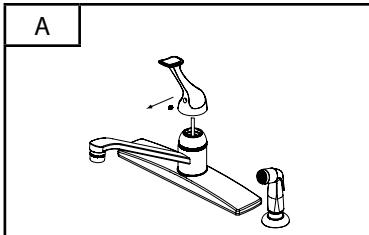
Unscrew the aerator by turning it clockwise. Inspect the black rubber packing and small parts. Clear away any debris. Reassemble aerator and replace on end of spout.

PROBLEM: Improper water pattern.

CAUSE: Aerator incorrectly fitted or aerator assembly is dirty

ACTION:

1. Remove the aerator from the spout end by turning it clockwise.
2. Gently flush the small parts inside the aerator to clear away any debris.
3. Re-install the small parts as shown in the exploded diagram (Diagram I). Metal screens must be flat and plastic supporter must be straight.
4. Screw the aerator onto the spout end and tighten



Specifications



Physical Characteristics

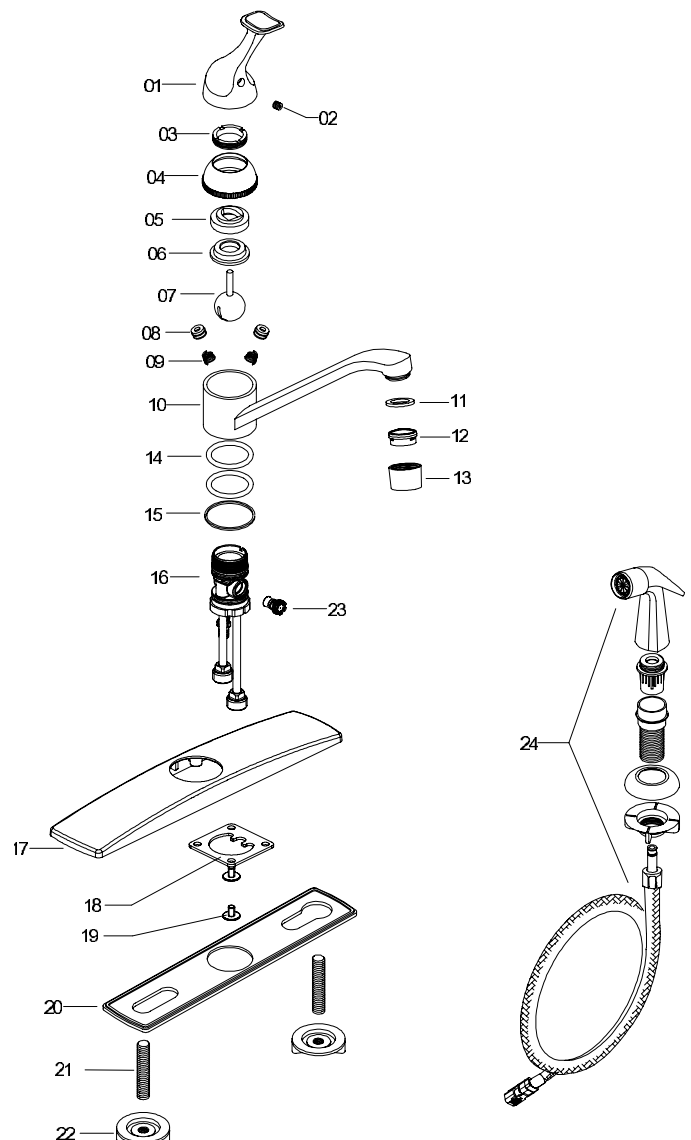
- Description: Single handle kitchen faucet with 8" centerset, washerless ball design, and with or without black side-spray
- Finish: Polished chrome
- Max. Flow Rate: 2.2 G/min (8.3 L/min)
- ASME A112.18.1/CSA B125 Certified
- Meets ANSI/NSF61-9 Low Lead Requirements
- This product complies with 0.25% weighted average lead content on wetted surfaces.
- Total Weight of Item: 3.0 lbs.

Certifications



- 116758 – Chrome less spray**
- 116757 – Chrome with spray**
- 30-K81-WNRNDCH-AD-Z – Chrome less spray**
- 30-K81-WYRNDCH-AD-Z – Chrome with spray**
- 30-K81-WNRNDCH-B-Z – Chrome less spray**
- 30-K81-WYRNDCH-B-Z – Chrome with spray**

No.	Part Description	Material
1	Handle	ZZnA14
2	Set screw	SUS302
3	Adjusting ring	Brass C37700
4	Cap	ZZnA14
5	Cam	POM
6	Cam packing	NBR N7008F+Teflon
7	Cartridge	SUS302/304
8	Seat	NBR
9	Spring	SUS304
10	Spout	H62+C27200+C37700
11	Aerator assembly	EPDM E7008F
12		POM+SUS302
13		ABS PA727
14	O-ring	NBR E7008F
15	Washer	POM
16	Body	3101+LTN60-2+C37700+C12200+SUS+NBR+EPDM
17	Escutcheon	ZZnA14
18	Washer	Q235
19	Screw	SUS302/304
20	Base plate	PP+40% CaCO ₃
21	Bolt	Q235A
22	Mounting nut	ABS
23	Diverter	Brass+POM+NBR N7008F+EPDM
24	Side spray	POM+PVC



Rough-In

116758 – Chrome less spray
 116757 – Chrome with spray
 30-K81-WNRNDCH-AD-Z – Chrome less spray
 30-K81-WYRNDCH-AD-Z – Chrome with spray

30-K81-WNRNDCH-B-Z – Chrome less spray
 30-K81-WYRNDCH-B-Z – Chrome with spray



Certifications



Single Handle Kitchen Faucet with or without Black Side-Spray

