



SERVICE PARTS LIST

BULLETIN NO.
55-06-2640

SPECIFY CATALOG NO. AND SERIAL NO. WHEN ORDERING PARTS		REVISED BULLETIN	DATE
M18 CORDLESS CAULK and ADHESIVE GUN			Nov. 2011
CATALOG NO.	2641-059	SERIAL NUMBER	E12A
		WIRING INSTRUCTION SEE PAGE 3	

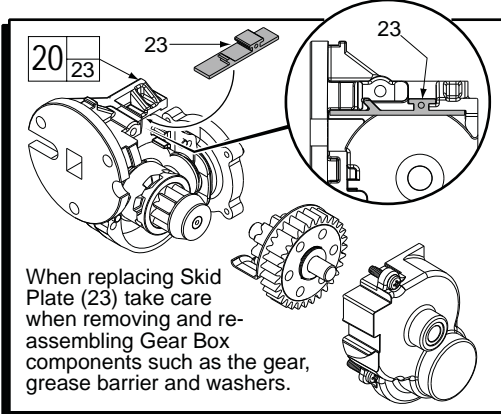
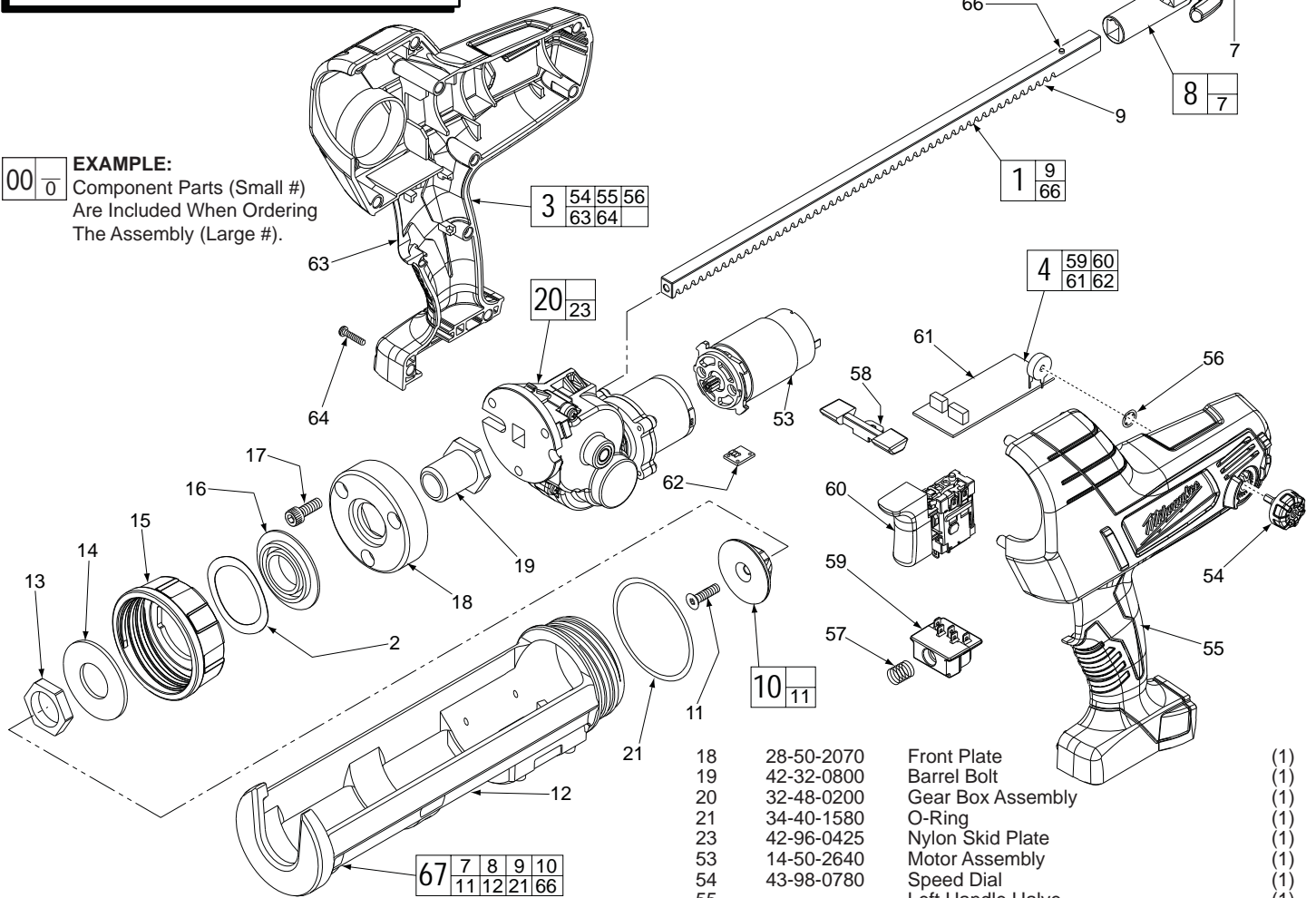


FIG.	PART NO.	DESCRIPTION OF PART	QTY.
1	44-94-0660	10 oz. Rod Assembly (Incl. rod & magnet)	(1)
2	45-88-2640	Wave Washer	(1)
3	31-50-2100	Handle Assembly with Speed Dial	(1)
4	23-66-2645	Switch Assembly with PCBA	(1)
7	45-04-2050	M5 x .75 Flat Hd. T-25 Security Screw	(1)
8	31-44-1030	Rod Handle	(1)
9	-----	Rod for 10 oz. Cartridge	(1)
10	44-70-0330	10 oz. Plunger	(1)
11	45-04-2015	M5 x .625 Flat Hd. Phillips Screw	(1)
12	31-01-1800	10 oz. Cartridge Holder	(1)
13	44-40-0900	Barrel Nut	(1)
14	45-88-1495	Flat Washer	(1)
15	42-52-0440	Cartridge Cap	(1)
16	31-86-0375	Spacer	(1)
17	45-04-1090	Hex Skt. Bolt	(3)

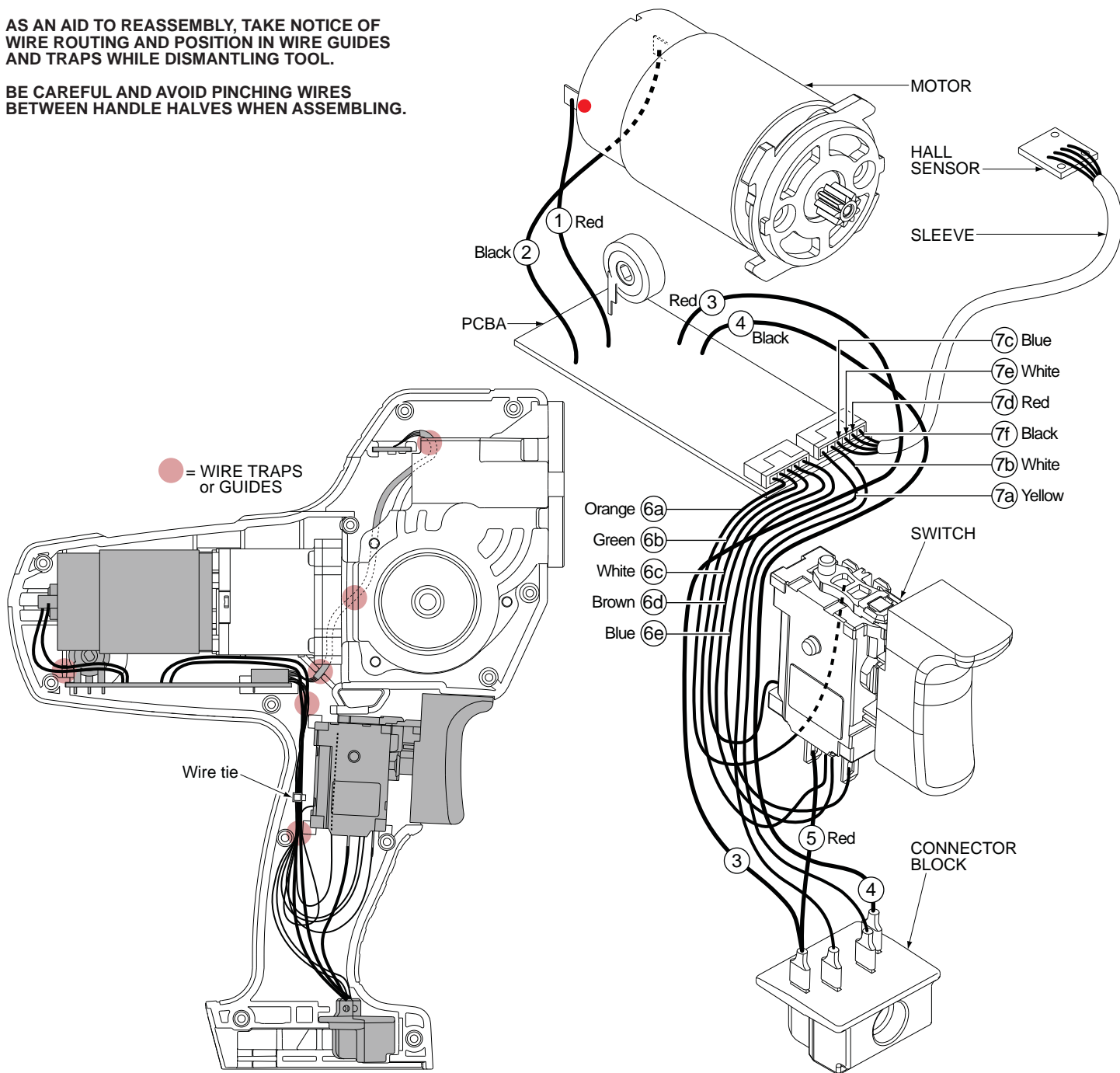
EXAMPLE:
Component Parts (Small #)
Are Included When Ordering
The Assembly (Large #).



18	28-50-2070	Front Plate	(1)
19	42-32-0800	Barrel Bolt	(1)
20	32-48-0200	Gear Box Assembly	(1)
21	34-40-1580	O-Ring	(1)
23	42-96-0425	Nylon Skid Plate	(1)
53	14-50-2640	Motor Assembly	(1)
54	43-98-0780	Speed Dial	(1)
55	-----	Left Handle Halve	(1)
56	42-70-1125	Retainer / External Nut	(1)
57	40-50-1125	Connector Block Spring	(1)
58	45-24-1250	Shuttle Lock	(1)
59	-----	Connector Block	(1)
60	-----	Switch	(1)
61	-----	PCBA	(1)
62	-----	Hall Sensor (Electronic Switch)	(1)
63	-----	Right Handle Halve	(1)
64	06-82-2025	Pan Hd. Plastite T-10 Screw	(12)
66	-----	Rod Magnet	(1)
67	48-08-1076	10 oz. Quick Change Carriage Kit	(1)
-----	-----	Service Nameplate (Not Shown)	(1)

AS AN AID TO REASSEMBLY, TAKE NOTICE OF WIRE ROUTING AND POSITION IN WIRE GUIDES AND TRAPS WHILE DISMANTLING TOOL.

BE CAREFUL AND AVOID PINCHING WIRES BETWEEN HANDLE HALVES WHEN ASSEMBLING.



WIRING SPECIFICATIONS

Wire No.	Wire Color	Origin or Part No.	Gauge	Length	Terminals, Connectors and End Wire Preparation
1	Red	23-66-2645	----	----	Component of PCBA on Switch Assembly. Solder to right terminal on motor (marked with red dot).
2	Black	23-66-2645	----	----	Component of PCBA on Switch Assembly. Solder to left terminal on motor.
3	Red	23-66-2645	----	----	Component of PCBA on Switch Assembly. Attached to PCBA and wire #5 on connector block.
4	Black	23-66-2645	----	----	Component of PCBA on Switch Assembly. Attached to PCBA and connector block.
5	Red	23-66-2645	----	----	Component of Switch Assembly. Attached to switch and wire #3 at the connector block.
6a	Orange	23-66-2645	----	----	Component of Switch Assy. Part of a 5 wire terminal block connecting to the PCBA and switch.
6b	Green	23-66-2645	----	----	Component of Switch Assy. Part of a 5 wire terminal block connecting to the PCBA and switch.
6c	White	23-66-2645	----	----	Component of Switch Assy. Part of a 5 wire terminal block connecting to the PCBA and switch.
6d	Brown	23-66-2645	----	----	Component of Switch Assy. Part of a 5 wire terminal block connecting to the PCBA and switch.
6e	Blue	23-66-2645	----	----	Component of Switch Assy. Part of a 5 wire terminal block connecting to the PCBA and switch.
7a	Yellow	23-66-2645	----	----	Comp. of Switch Assy. Part of a 6 wire terminal block connecting to the PCBA and connector block.
7b	White	23-66-2645	----	----	Comp. of Switch Assy. Part of a 6 wire terminal block connecting to the PCBA and connector block.
7c	Blue	23-66-2645	----	----	Comp. of Switch Assy. Part of a 6 wire terminal block connecting to the PCBA and hall sensor.
7d	Red	23-66-2645	----	----	Comp. of Switch Assy. Part of a 6 wire terminal block connecting to the PCBA and hall sensor.
7e	White	23-66-2645	----	----	Comp. of Switch Assy. Part of a 6 wire terminal block connecting to the PCBA and hall sensor.
7f	Black	23-66-2645	----	----	Comp. of Switch Assy. Part of a 6 wire terminal block connecting to the PCBA and hall sensor.