



Installation Manual V2.0

© 2019 VERT.design

IMPORTANT:

The installation of pre-hung interior doors must be performed by a professional.

If you have any problems or questions regarding the installation process, please email us at: info@vert.design

We appreciate your comments and feedback regarding our products and this manual.

Thank you,

VERT.design team



Installation Manual

V2.0

Installation manual summary:

1.	Check rough openings:	3
2.	Check Swing Direction (Left or Right)	4
3.	Unpack the product	5
4.	Follow instructions for the EZ-Hang system	6
5.	Install casings	11
6.	Install knobs following manufacturer's instructions	14

Product content:

- ✓ Pre-hung door (Jambs and Slabs). The slab is already installed in the jambs, using chrome hinges.
- ✓ Casings (4 legs (long), 2 tops (short))
- ✓ EZ-Hang Brackets (7 units, Manual)



1. Check rough openings:

Common size (in)		Actual slab size (in)		Actual kit size (in)		Rough Opening (in)		Tolerance (in)	
W	H	W	H	W	H	W	H	W	H
36	80	35.4	79.1	37.8	80.6	38.5	81	0.37	0.41
32	80	31.5	79.1	33.8	80.6	34.5	81	0.34	0.41
30	80	29.1	79.1	31.5	80.6	32.5	81	0.52	0.41

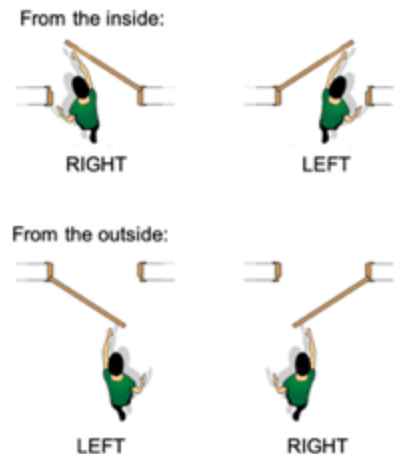
2. Check Swing Direction (Left or Right)

Left-hand door swing

Open the door and stand with your back to the swinging door hinges. If the door swings open to your left, it is a left-hand door.

Right-hand door

Open the door and stand with your back to the swinging door hinges. If the door swings open to your right, it is a right-hand door.



"OUTSIDE" IS WHERE THE HINGES ARE LOCATED.

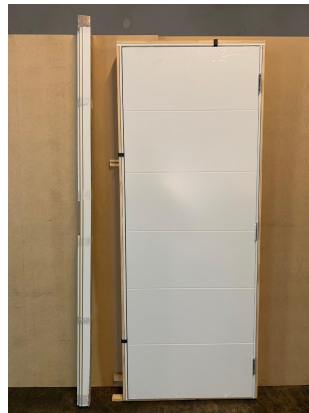


3. Unpack the product

The package contains:

- Pre-hung interior door: slab and jambs
- Casings: 4 legs and 2 tops
- EZ-Hang bracket system: 1 package

1. Remove the plastic film
2. Remove the EZ-Hang Brackets package
3. Remove the casings



4. Lay down the pre-hung door on the floor, using the cardboard as protection
5. Remove the wooden supports from the pre-hung door. Make sure you don't damage the white polyester coating.





4. Follow instructions for the EZ-Hang system

EZ-Hang is the quickest and easiest method available for interior door installation.

<https://ezhangdoor.com>

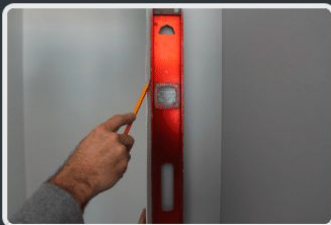
<https://ezhangdoor.com/interior-door-installation-instructions/>

[Installation Video](#)

With EZ-Hang, there's no need for shims, which dramatically reduces the time needed for interior door installation, while simultaneously increasing accuracy, ensuring a perfect fit every time. Below, you will find a step-by-step guide for installing an interior door, along with a video demonstration.

What you need: interior door installation

- EZ-Hang Kit
- Level
- Pencil
- Drill or screwdriver



MARK IT



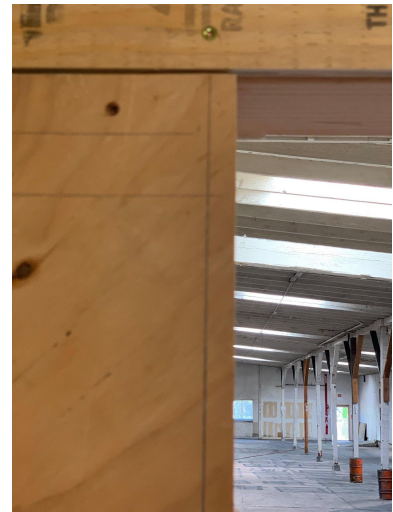
ATTACH IT



HANG IT

Step 1: Using a level, draw a vertical plumb line on the drywall 1/2" in from the rough opening. This line must be on the hinge side and in the room the door swings in to.

- The line does not have to be exactly 1/2" from the rough opening, but it's important that it's plumb. This line, if drawn properly, will allow you to only have to use your level once, instead of constantly having to check the door for plumb and level.



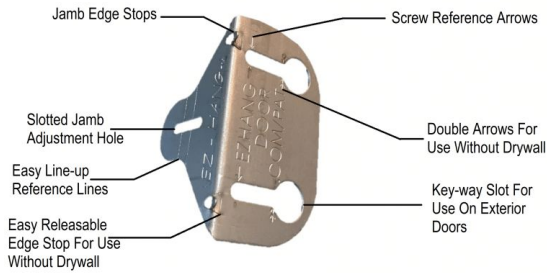
- Make sure the bubble is directly in the center of the lines on the level. Once the line is drawn on the wall, it will give a representation if the wall is not plumb or your rough opening is not correctly sized.



Installation Manual

V2.0

Step 2: Screw brackets to the back of the door frame using the 1/2" screws provided. Install brackets below each hinge and even with the edge of the door frame. Repeat on the knob side of the door, starting 12" down from the top, 2" above the latch hole and 6-8" up from the bottom.



The final bracket is for the top. It is a pivotal bracket that accomplishes two things:

1. First, it allows the installer to easily remove any bow in the top jamb. These jambs are almost always crowned up due to the weight of the door resting on the side jambs from factory to jobsite.
2. Secondly, it adds structural strength to the installation itself by inhibiting the side jambs from moving side to side. This is particularly important as the weight of the door is constantly "pulling" on the top hinge.



The door is now ready to insert into the rough opening. Always measure the opening prior to setting the door to verify that the height and width will allow the door to fit, along with some adjustment space.

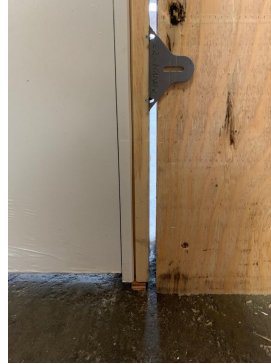


Installation Manual

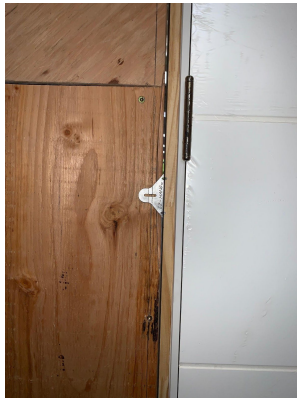
V2.0

Carpet or unfinished floor

Add 3/8" or 1/2" blocks under the door if you will be installing carpeting on the floor. This will allow space for the carpet to be tucked under the jambs. It will also provide some adjustment room if the floor is not perfectly level.



Step 3: Starting at the top hinge, match one of the lines of the bracket with the level line drawn in step one. Screw the door to the wall using the drywall screws provided.



Work your way down the hinge side of the door, making sure to use the same reference line for each of the three hinge brackets. There are two lines on the brackets, so **be sure to use the same line for all the brackets on the hinge side.**



Installation Manual

V2.0

Next, check the clearance between the frame and the door on the top and knob side. Take care to make sure they are equal.

- Starting at the top again, continue working your way down the door. Be sure to look at both upper corners where the door meets the jambs. These should be equal. If not, and you are sure the door is perfectly plumb, you may need to raise or lower one side of the jambs to adjust for the discrepancy.
- Keep the clearance between the frame and door equal, as you screw the door to the wall with the drywall screws.

For added door stability, we recommend replacing the central screws of the hinges with a 3" screw, and add a 3" screw in the strike, as shown in the picture.

If the floor is not finished, you may need to add the proper space required for the flooring (carpet, etc.) In that case, IT IS MANDATORY to replace the central screws of the hinges with 4" ones, and add a 4" screw in the strike, as shown in the picture.



5. Install casings

VERT Pre-hung interior doors consist of the slab, jambs and casings. The slab comes installed in the jambs with chrome hinges. The casings should be installed on site and require a precise measurement and cut.

This should be performed by a professional.

The casings should be installed using a 90 degree angle, as shown in the picture.



The kits contain four (4) legs (long) and two (2) tops (short). Tops are thinner, so the cut is hidden and it's easier to perform the installation.

Hinge side (outside):

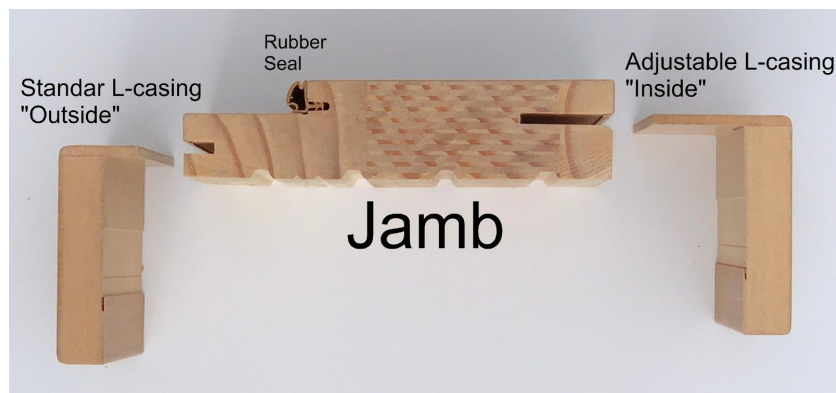
- Two legs, standard L-casing
- One top, standard L-casing

Inside (adjustable casing):

- Two legs, adjustable L-casing
- One top, adjustable L-casing



The casings are installed inserting the tenon of the casings in the mortise of the jambs.



1. Start with the hinge side, using the standard L-casings.

Measure the legs: lean the leg on the floor, vertically (where the casing will be installed). Two marks should be made, as shown in the picture. You can use the top width to make a precise measurement. Temporarily place the top casing in the frame to help you measure it.



2. Make two marks: one at the top end of the casing, and one below the slab.
3. Cut the top casing as detailed in the picture:



Repeat the procedure for all the leg casings (total 4).

Install the 4 leg casings.

The casings are installed by inserting the tenon of the casing in the mortise of the jamb.

Start with the lower side, inserting the corner of the tenon of the casing in the mortise of the jamb. With the help of a rubber hammer, gently insert the rest of the casing in the mortise.



4. Measure the Tops:

After installing the legs, measure the distance between both legs. This is the measure to which the tops should be cut. Mark and cut it.



5. Install the casings by inserting the tenon of the top casing in the mortise of the jamb.

6. Install knobs following manufacturer's instructions

Knobs are not provided.

Please follow manufacturer's instructions.



IMPORTANT: please note that the slabs have a plastic edge, and casings have a polyester coating.



Installation Manual

V2.0

Installed product:





VERT – technical info

- VERT pre-hung KITS are finished products, ready to install (the customer can optionally request a PRIMED version, to be finished on site).
- They can be installed in minutes, instead of hours as with traditional methods. A trained team can install VERT doors 10 times faster than traditional doors. Not only does this save labor costs, it shortens the total time of door installation. This is particularly valuable for projects that get delayed, as time saved in the final stages helps expedite their completion.
- It's recommended that door installation be done in the last stage of a construction project, when the walls are finished and painted.
- Installation is done using expandable polyurethane foam on six points of the frame. No additional measures are required, or tools since nails and screws are not used.
- The only requirement to take into account regarding architectural design is the use of the "drawer frame" system.
- For protection the door slab is covered with shrink wrap, and the rubber seals of the frame with blue plastic. This can be removed by the client after furnishing, to prevent the doors from being damaged.

Door slab:

- Wood construction
- 35mm, 40mm and 45mm slab thickness
- HDF laminate on both faces, 3mm (e=35mm slabs) / 6mm (e=40mm slabs)
- Taeda Pine wood (Finger Joint), kiln dried, 30x30mm
- Recycled cardboard honeycomb core or MDP solid core
- For honeycomb core doors: Lock reinforcement with kiln-dried Taeda pine wood
- PVC edgebanding, 0.4mm, in WHITE or WOOD COLOR
- Bater-resistant sealant at Bottom edge

Jambs:

- Made of clear finger-jointed Taeda Pine wood
- Polyester coating
- Rubber seal
- Anchoring: EZ-hanger



Jambs Casings:

- Adjustable (2cm, 25/32 in)
- Made of moisture-resistant MDF and HDF
- Polyester coating

Finishes:

Primer

- Surface: Water-based white (for painting).
- Sides: PVC sheet; Water-based white (for painting).
- Bottom: Water-resistant Hot Melt Seal.
- Frame and Jambs: Water-based white (for painting).

White UV

- Surface: 7 coats of white UV paint.



Installation Manual

V2.0

- Sides: PVC sheet.
- Bottom: water-resistant Hot Melt Seal.
- Frame and Jambs: Coated in white polyester.

Color finish: Tanganica / Freijo / Ipê

- Surface: UV paint.
- Sides: PVC sheet.
- Bottom: Water-resistant Hot Melt Seal.
- Frame and Jambs: Coated in wood-colored polyester.

Other important features:

- ISO certified
- FSC environmental certification