

OPERATION

CAUTION: Keep feet and hands clear of blade while raising and lowering the blade. Pay close attention to your surrounding and people in your immediate area at all times.

Operation Step 1

Transport Position

1. To raise your blade into transport position, pull the upper handle toward operator.
Note: Ensure the handle has been pulled back far enough to engage the self-locking feature.

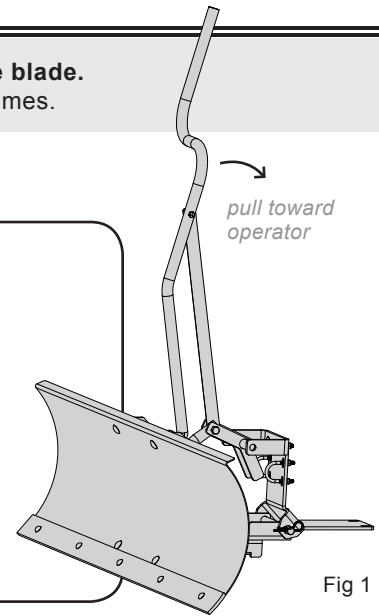


Fig 1

Operation Step 2

Changing the Blade Angle

1. Turn key switch off & engage parking brake, then lower the blade to the ground.
2. Simply remove the hair pin beneath the push assembly arm (see fig 2.1) and pull hitch pit out (fig 2.2).
3. Rotate blade to desired location (fig 2.3).
4. Replace the hitch pin and secure hair pin underneath in order to lock the blade in position.

Fig 2.1

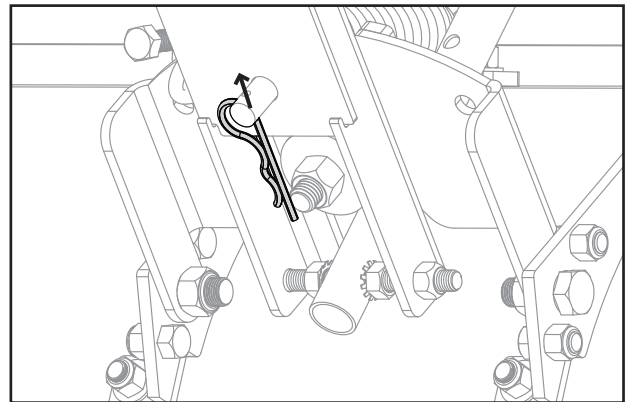


Fig 2.2

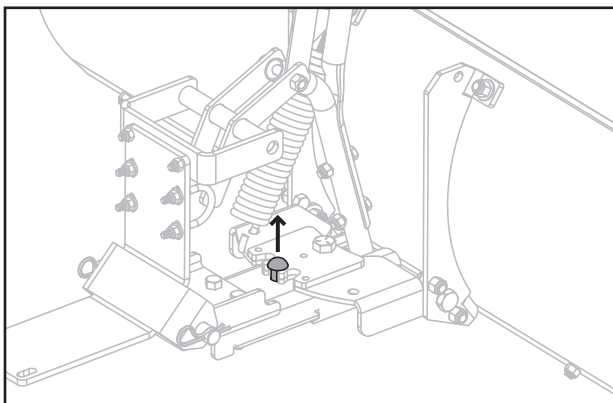
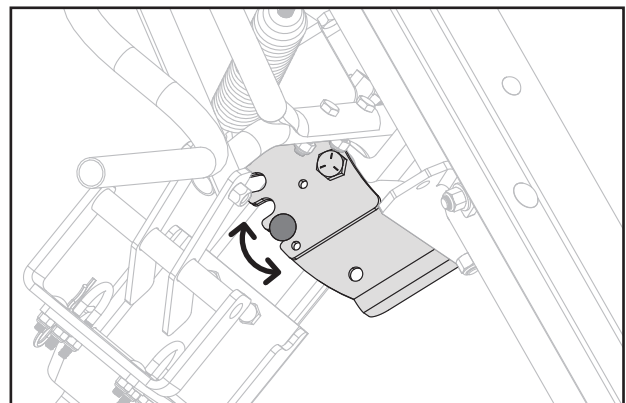


Fig 2.3



NOTE: Do not adjust angle of blade while in transport position.

OPERATION



CAUTION: Keep feet and hands clear of blade while raising and lowering the blade.
Pay close attention to your surrounding and people in your immediate area at all times.



CAUTION

1. INSPECT THE AREA

Before operating the snow blade, inspect the area to be worked carefully. Avoid curbs and other heavy obstructions.

2. KNOW THE TERRAIN

Avoid exceptionally sharp slopes or drop offs which may be hidden by the snow, never run the snow blade into heavy material at high speed.

3. LOWER THE BLADE

Always lower blade to ground before leaving mower

4. START SLOW

Always begin at low speeds and *gradually increase* as required. **Do not exceed 5 mph.**
Do not attempt to move snow all in the same direction, causing an excessive buildup, which would become larger with each pass.

5. RAISE THE BLADE

Raise blade when moving in reverse

6. SNOW REMOVAL

The blade is intended for snow removal only

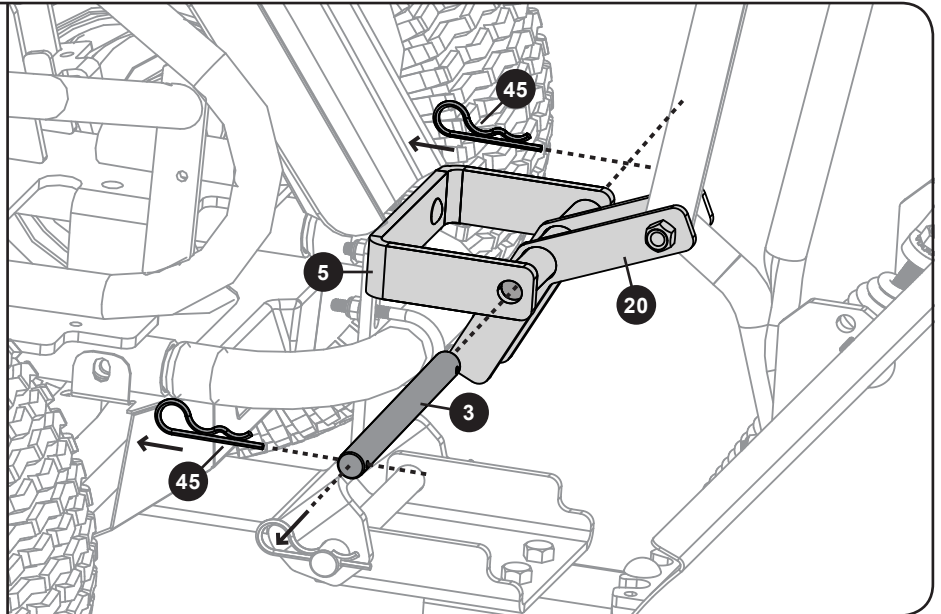
STORAGE

⚠ CAUTION: Keep feet and hands clear of blade while raising and lowering the blade.
Pay close attention to your surrounding and people in your immediate area at all times.

Storage Step 1

Removing Blade

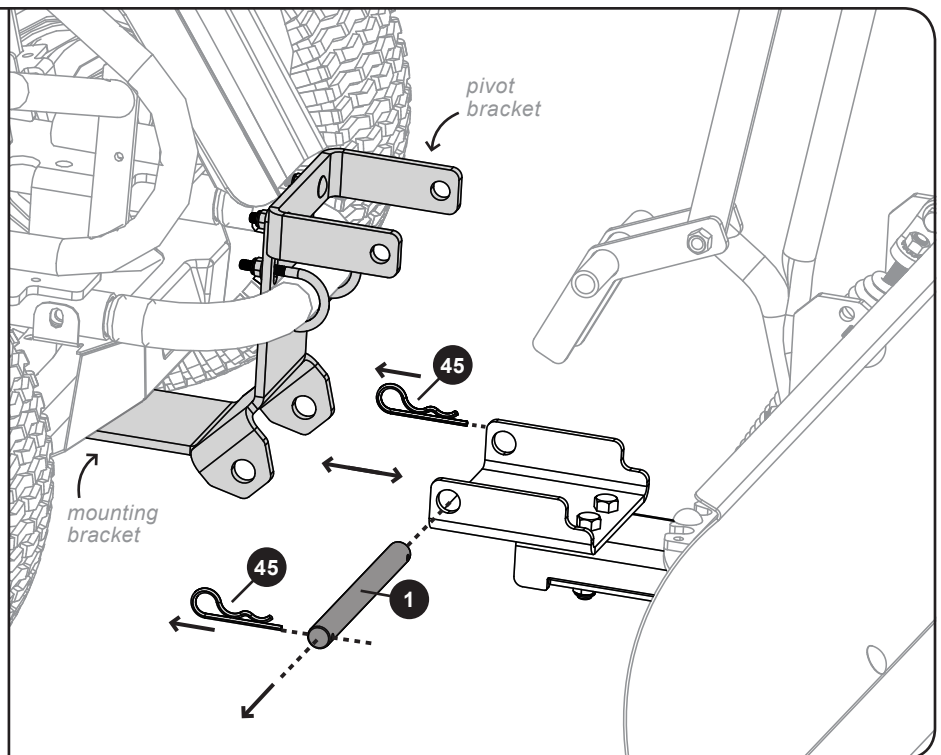
1. Turn key switch off and engage the parking brake, then lower the blade to the ground.
2. Remove the two hairpin cotters (45).
3. Remove the pin (3) from the pivot weldment (20) and pivot bracket (5).



Storage Step 2

Removing Blade

4. Set aside the two hairpin cotters (45) from each end and remove the plated hinge rod / pin (1).
5. The push arm assembly and mounting bracket will easily separate.
6. Leave the mounting and pivot brackets attached to the mower.



MAINTENANCE



CAUTION: Keep feet and hands clear of blade while raising and lowering the blade.
Pay close attention to your surrounding and people in your immediate area at all times.

1. **CLEAN AND DRY**

The key to years of trouble-free service is to keep you plow clean and dry

2. **MOVING PARTS**

After the first 30 minutes of use, check all of the fasteners for tightness. Thereafter, periodically check all fasteners for tightness.

3. **MOVEMENT**

Check all moving parts for free movement and if necessary, lubricate with oil.

4. **BUILD-UP**

Periodically remove debris build up

5. **RUST**

For rust appearing on painted surfaces, sand lightly and paint affected area with enamel.

6. **ROTATION**

After the wear bar has worn considerably, it should be rotated (from bottom to top) to provide a "new" edge. Remove the five carriage bolts (5/16"), rotate the blade, and then reassemble the unit with the "new" edge on the surface.