

# Data Bulletin

## QO® Load Centers Repair / Replacement Parts Three-Phase Convertible Main Circuit Breaker

**NOTE:** For specific part numbers, go to [www.schneider-electric.us](http://www.schneider-electric.us), click on Product FAQ's, enter the device catalog number, click SEARCH, then look for the information required. Photos are typical, and may vary slightly from your actual device.

### Part:

Indoor Cover

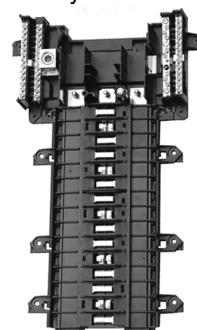


RB Cover / Door



Interior Trim / Dead Front

Interior Assembly



Main Circuit Breaker

QDL Frame Size  
125-225 AQO Frame Size  
100 A

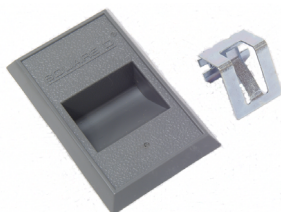
Main Circuit Breaker Connectors



Indoor Circuit Breaker Connector Keps Nuts



Indoor Cover Latch Kit



Indoor Cover Hinges



Indoor Flush Cover Mounting Screws

Indoor Surface Cover and RB Interior Trim /  
Dead Front Mounting Screw

RB Cover / Door Mounting Screw



RB / Outdoor Cover Latch and Rivet



Neutral Bonding Screws (Green)



Schneider Electric USA  
1601 Mercer Road  
Lexington, KY 40511 USA  
1-888-SquareD (1-888-778-2733)  
[www.us.SquareD.com](http://www.us.SquareD.com)

Electrical equipment should be installed, operated, serviced, and maintained only by qualified personnel. No responsibility is assumed by Schneider Electric for any consequences arising out of the use of this material.

© 2005 Schneider Electric All Rights Reserved