



Tomcat® Super Hold is our most advanced glue formulation for superior catch & hold. High-contrast glue color allows quick rodent identification.

HOW TO USE



1 Open package and separate Tomcat® Glue Traps.



2 Place Tomcat® Glue Traps in areas (such as along walls) where rodents or insects will most likely cross over them as they move from hiding places to feeding places.



3 After use, simply dispose of humanely.

Can Be Used For...

- ▶ Mice
 - ▶ Cockroaches
 - ▶ Spiders
 - ▶ Scorpions
- ... and most other insect pests

Tomcat Brands
PO Box 190
Marysville, OH 43040
© 2017 Tomcat Brands.
World rights reserved.
EPA EST. NO. 12455-WI-1^k
12455-WI-2^P, 12455-WI-3^W
Superscript is first letter of the lot number.
Questions or Comments?
Call 1-877-332-0755
www.tomcat.com

FPO

03627/1010

8 88603 03627 1

70SH-3
CR3911

CAPTURES MICE

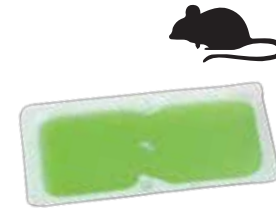
CAPTURES MICE

#1 BRAND OF
GLUE TRAPS
IN AMERICA*



SUPER HOLD
GLUE TRAPS MOUSE SIZE
Captures Mice

- ▶ Pesticide-Free
- ▶ Proven Effective
- ▶ Ready-to-Use



MADE IN USA

*Based on Nielsen Total US XAOC data

Not an instant kill trap

Contains **4** Mouse Size
Glue Traps

IMPORTANT: • Protect in dusty areas by leaning boards against wall and place Tomcat® Glue Traps between board and wall. • Avoid using Tomcat® Glue Traps in wet areas. Dispose of rodent and glue trap completely. Do not place glue traps where there is a possibility of birds or non-target animals coming in contact with adhesive. • If accidentally contacted, remove with mineral spirits followed with washing with warm water and mild detergent.

Tomcat® Glue Traps work without poison or mechanical apparatus. Glue traps take advantage of the rodent's natural tendency to run along walls. When the rodent runs onto the tray, they get stuck. Simply dispose of the entire glue trap.

APPLICATION DIRECTIONS: Place Tomcat® Glue Traps for mice at 5-8 foot intervals.

080817