

STOVETOP FIRESTOP® PLUS LC DECORATIVE COVER USER MANUAL

MANUFACTURER'S INFORMATION

Designed & Manufactured by WilliamsRDM in Texas.

Only to be used with STFS Plus LC products.

For more information about StoveTop FireStop, please visit www.STFS.com, or call 1-888-616-7976.

Read this user manual carefully prior to installation

LIMITED WARRANTY

WilliamsRDM, Inc. ("WRDM") warrants this StoveTop FireStop® product against defects in material or workmanship for the time periods and under the terms set forth below. Pursuant to this Limited Warranty, WRDM will, at its option, (i) repair the product using new or refurbished parts or (ii) replace the product with a new or refurbished product. For purposes of this Limited Warranty, "refurbished" means a product or part that has been returned to its original specifications. **In the event of a defect, these are your exclusive remedies.**

WRDM warrants to the original retail purchaser all WRDM products for a period of one (1) year against defective material and faulty workmanship. Any unit found to be defective during the warranty period will be repaired if possible, or replaced free of charge upon the buyer's prepaid return of the defective unit—only after receipt of an official Return Material Authorization (RMA) number. Proof of retail purchase is required. This warranty gives the buyer specific legal rights which may vary by state (or country.)

THE FORGOING WARRANTY IS MADE IN LIEU OF ALL OTHER WARRANTIES WITH RESPECT TO THIS PRODUCT, INCLUDING-

ING ANY IMPLIED WARRANTY OF MERCHANTABILITY OR FITNESS FOR A PARTICULAR PURPOSE—WHICH ARE HEREBY DISCLAIMED. THERE ARE NO IMPLIED WARRANTIES WHICH EXTEND BEYOND THE DESCRIPTION ON THE FACE HEREOF. NO PERSON IS AUTHORIZED TO GIVE ANY OTHER WARRANTY, OR TO ASSUME FOR WRDM ANY OTHER LIABILITY IN CONNECTION WITH THE SALE OR INSTALLATION OF ITS PRODUCTS. REPLACEMENT OF THE PRODUCT WILL BE THE SOLE REMEDY WITH RESPECT TO ANY LOSS OR DAMAGE TO PROPERTY. BUYER IS NOT RELYING ON SELLER'S JUDGMENT REGARDING BUYER'S PARTICULAR REQUIREMENTS AND BUYER HAS HAD AN OPPORTUNITY TO INSPECT THE PRODUCT TO BUYER'S SATISFACTION. UNAUTHORIZED SERVICE OF ANY KIND INVALIDATES ALL WARRANTY PROVISIONS.

This Limited Warranty covers only the hardware components packaged with this product. It does not cover technical assistance for hardware. Any parts or product replaced under this Limited Warranty will become the property of WRDM.

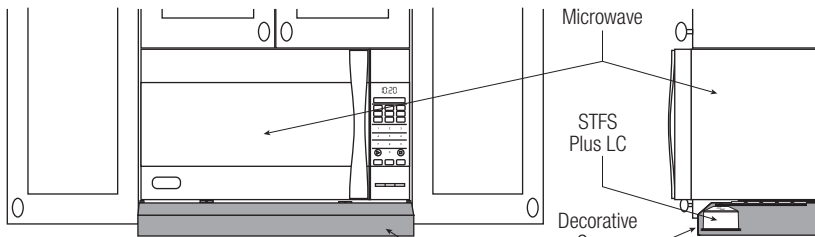
LIMITATION ON DAMAGES: WRDM SHALL NOT BE LIABLE FOR

ANY INCIDENTAL OR CONSEQUENTIAL DAMAGES, INCLUDING BUT NOT LIMITED TO ANY SUCH DAMAGES FOR ANY BREACH OF ANY EXPRESS OR IMPLIED WARRANTY ON THIS PRODUCT.

Instructions: To obtain warranty service, you must deliver the product, freight prepaid, in either its original packaging, or packaging affording an equal degree of protection, to WRDM's specified manufacturing facility.

This Limited Warranty only covers product issues caused by defects in material or workmanship during ordinary consumer use; it does not cover product issues caused by any other reason, including but not limited to product issues due to commercial use, acts of God, misuse, limitations of technology, or modification of or to any part of the WRDM product. This Limited Warranty is invalid if either the factory-applied work order number or date code has been altered or removed from the product. This Limited Warranty is valid only in the United States.

For StoveTop FireStop customer service:
go to www.STFS.com or call 1-888-616-7976.



STFS Plus LC Fire Suppressors (679-LC-3A, or 679-SLC-3A) should be properly aligned and installed prior to installation of the STFS Plus LC Decorative Cover, and according to the manufacturer's user manual.

PARTS INCLUDED*

STFS Plus LC Decorative Cover

Black
679-1-79

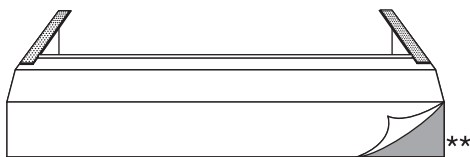
White
679-2-79

Stainless**
679-3-79

Alcohol Prep wipe



2x



1x



2x

*STFS Plus LC Fire Suppressors not included. Sold Separately.

**Only stainless steel comes with protective film, and must be removed prior to installation.

TOOLS NEEDED

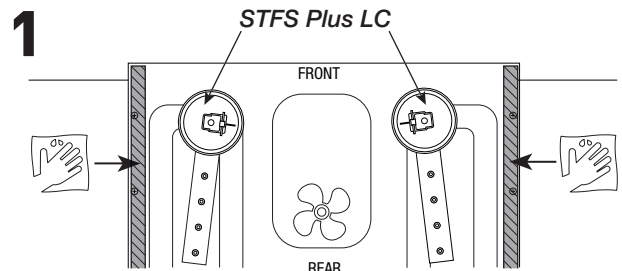
Scissors



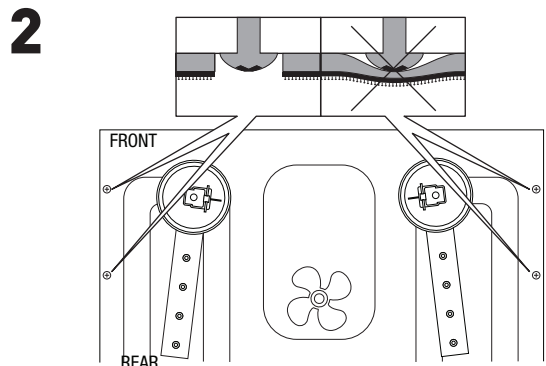
Ruler or
tape measure



Pen, pencil or Marker

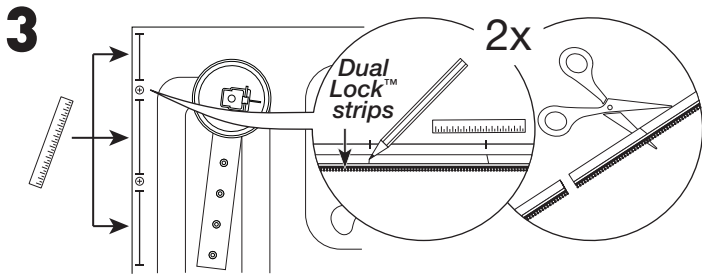


The cover will mount along the edges of the underside of the microwave. Make sure this area is completely dry & free of grease by using the enclosed alcohol wipes.

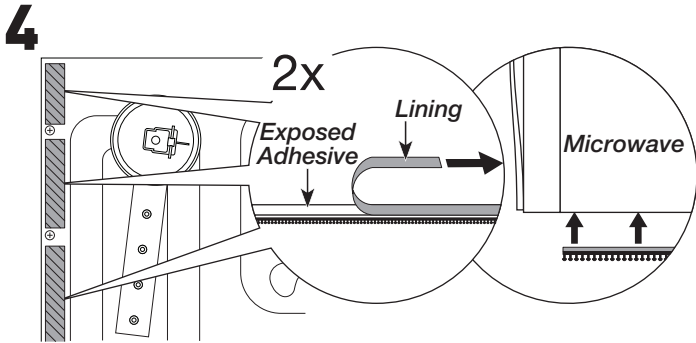


Identify potential obstacles (screws, ridges, etc.) along the path where the 3M™ Dual Lock™ strips will adhere. If there are none, proceed to Step 5.

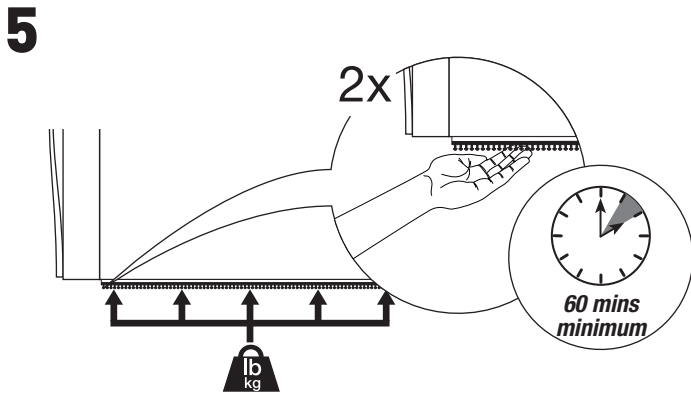
continued on back >>>



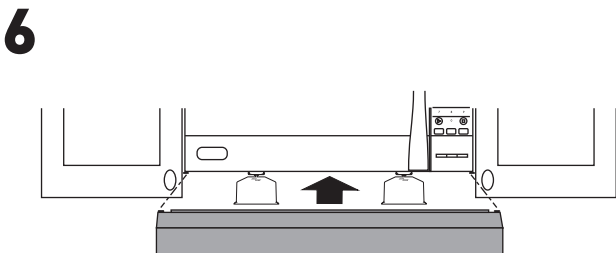
Measure the distance between each obstacle and mark the 3M™ Dual Lock™ strips where they should be cut. Cut strips to desired length.



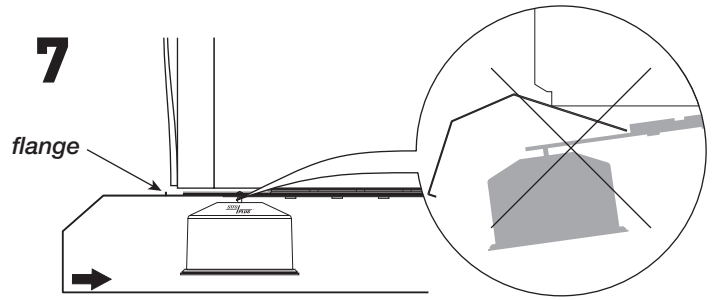
Peel off liner side of strips to expose adhesive backing. Apply to the underside of the microwave. Repeat on the other side.



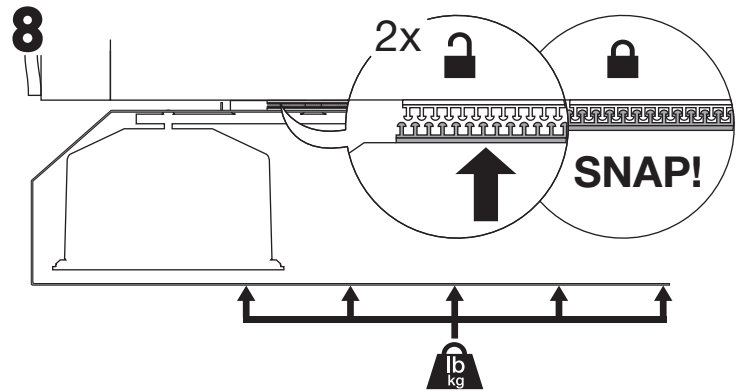
Apply even pressure to entire surface of 3M™ Dual Lock™ strips on both sides to secure to bottom of microwave. Wait at least 60 minutes to allow strip adhesive to cure.



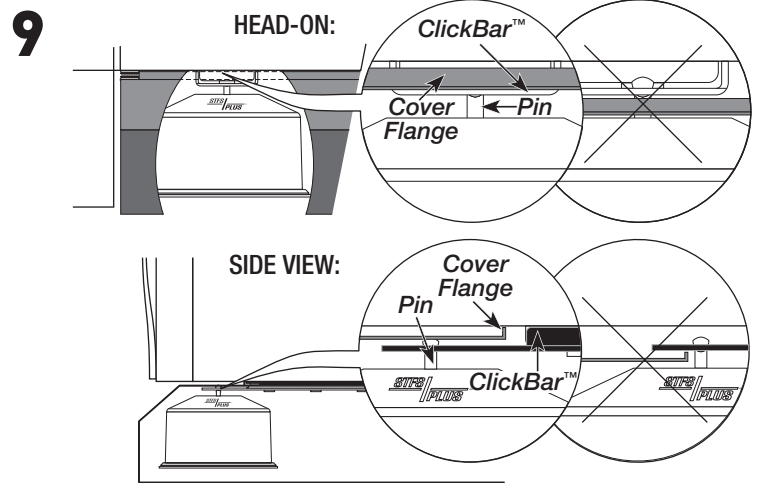
Center the cover on the microwave, between the cabinets, if present.



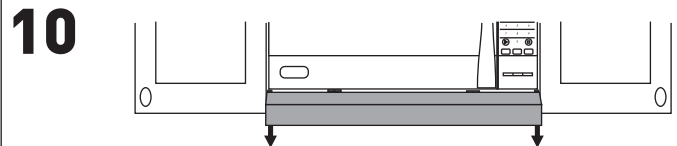
Slide the cover between the microwave and the ClickBar™ of the main unit as shown, without dislodging the STFS fire suppression unit. The cover will stop when the flange makes contact with the ClickBar.



Once in place, lift from the bottom of the cover, pressing the Dual Lock trips together until you feel and/or hear the "SNAP!" sound, indicating that the cover is secure in place.



The flange on the top center of the cover should fit between the microwave and the ClickBar without much gap between.



After at least 60 minutes, give a very slight tug on the bottom of the outside edges of the cover to confirm it is secure.

If repeated attempts do not result in the cover being securely attached, please call 888-616-7976.