

# QUICK SETUP GUIDE

LE2412

## What's in the Box

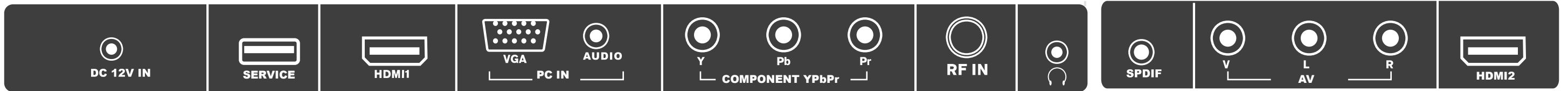
- LE2412 HDTV
- Pedestal Base / Hardware
- Pedestal Instructions
- Remote Control
- AAA Batteries (2)
- Power Adapter
- Quick Start Guide
- User Manual



## Register Your Product / Website Information / Customer Support

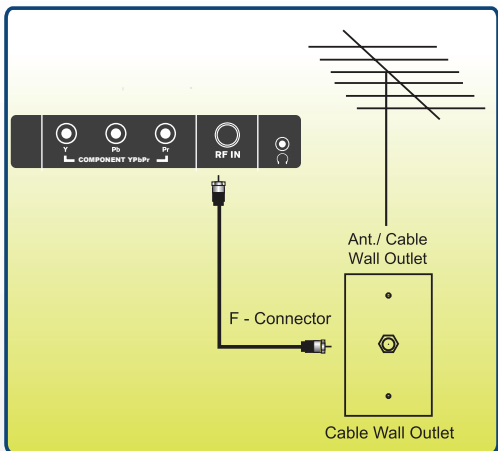
Before contacting your retailer, read the User Manual thoroughly. This Quick Setup Guide will answer the most frequently asked questions for setup, installation and use. For peace of mind and valuable services, please take a moment to register your product at [www.tmaxdigital.com](http://www.tmaxdigital.com). We encourage you to visit us at [www.tmaxdigital.com](http://www.tmaxdigital.com) for answers to your questions. Order accessories online or speak to a customer support representative at (877) 833-1888.

## TV Rear / Side Panel



The rear and side panel illustrations are provided to show AV INPUT and audio OUTPUT connections that are available to you. Reference the labels then determine the connections best suited to connect your HD and non-HD equipment. See the user's manual for complete details.

## RF Input Connection

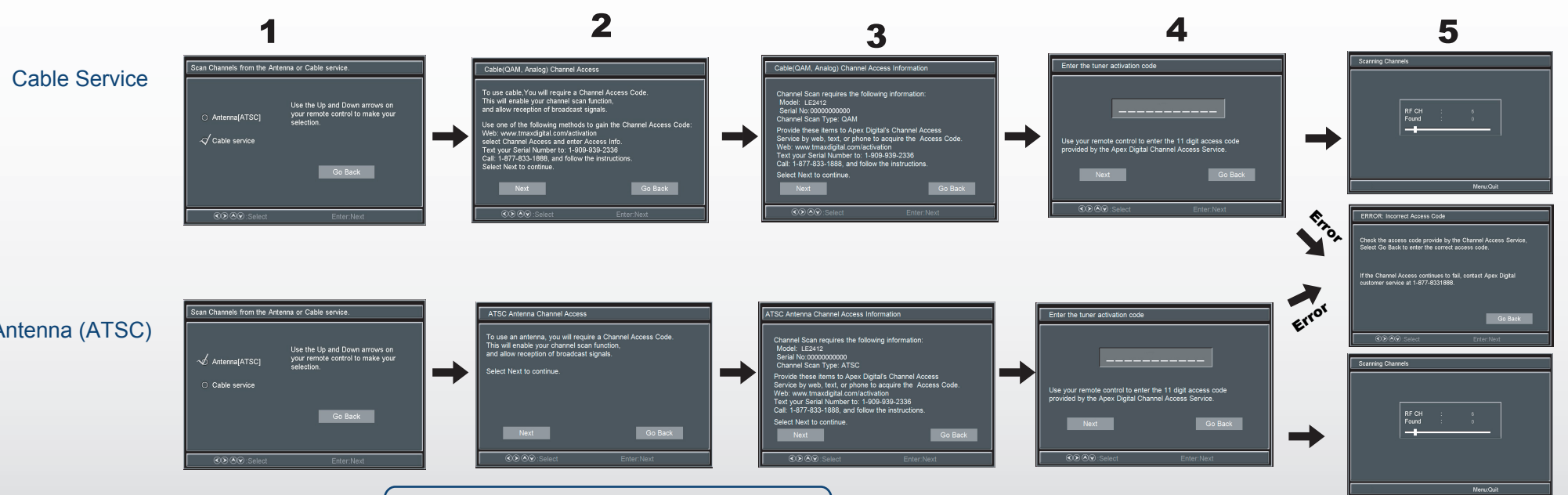


### TV Antenna Connection

- Use a rooftop or amplified antenna to receive local HD signals over the airwaves. For assistance in choosing the correct one in your area, visit [www.antennaweb.org](http://www.antennaweb.org).
- Connect the RF coaxial (75 ohm) cable from your existing TV antenna or the cable wall outlet to the RF input located on the TV's rear panel.
- Perform **Channel Auto Scan** (refer to Initial TV Setup) to receive available local digital TV channels that will be stored into the TV tuner memory.

## Initial TV Setup

After connecting your TV antenna turn the television ON. A quick setup wizard will display to select your preferred picture setting followed by antenna options if you use an indoor / outdoor antenna or subscribe to cable services (without a set top box) to receive local broadcast channels.



### How to Navigate:

- Press the ▲ ▼ arrow button to highlight the item you want.

To receive the Channel Access Code:  
Go to Web: [www.tmaxdigital.com/activation](http://www.tmaxdigital.com/activation)  
Text your 18-digit S/N to: 1-909-939-2336  
Call: 1-877-833-1888

NOTE: 1. TV reception when using an indoor/outdoor antenna is dependent on local terrain, tall buildings and distance from local area TV transmission towers.  
2. The Channel Access Codes are different for ATSC and cable.

## Cable / Satellite Set Top Box Connections

## HDMI Input Connection

### For BEST video performance

Connect to external equipment that features HDMI, an uncompressed, all digital video / audio interface found on today's HD digital set top boxes and blu-ray players. Use of this pure digital technology offers enhanced high definition video and digital audio all via a single cable.

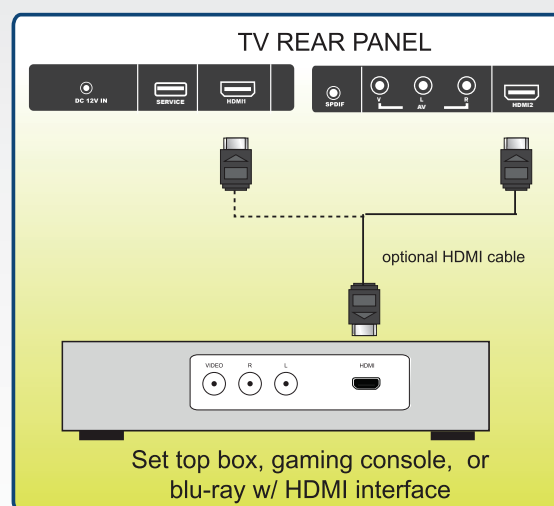
There are two (2) HDMI inputs available for use with devices such as an HD set top box, gaming console and a blu-ray player.

### How to Connect HDMI

- From your external digital equipment, connect an HDMI cable from the HDMI output to the HDMI input on the TV's rear panel.

### How To Use

- Press the HDMI button on the remote control or
- Press the INPUT button on the remote control. Use ▼▲ arrow buttons to highlight the input to view (HDMI 1, 2) then press ENTER.



## Component Input Connection

### For BETTER video performance

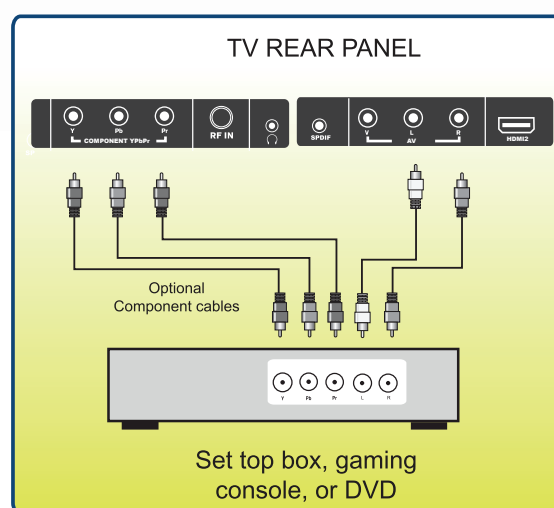
Connect to external equipment that features component video output jacks for great performance. Use Component video and audio inputs with a set top box, gaming console or DVD player.

### How to Connect Component

- When connecting external equipment to your television, match the colors of the connecting jacks (Video: Blue, Green, Red; Audio: White/Red).
- Connect optional component video cables (blue, green, red) from the video output jacks (Y, Pb, Pr) on your external equipment to the Component YPbPr input on the TV's rear panel.
- Connect white/red audio cables for sound from the audio (L/R) output jacks on your external equipment to the Component L/R input on the TV's rear panel.

### How to Use

- Press the COMP button on the remote control or
- Press the INPUT button on the TV remote control. Use ▼▲ arrow buttons to highlight the input to view (Component 1) then press ENTER.



## Composite Input Connection

### For GOOD video performance

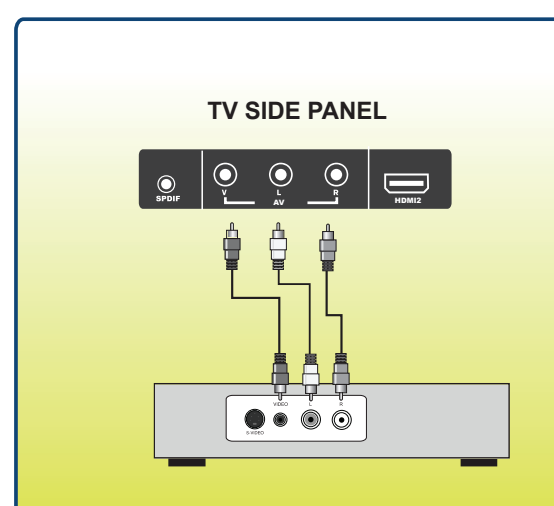
Connect to external equipment using optional video and audio cables. Composite output jacks are available on most set top boxes and DVD players. (Component and HDMI connections are recommended for best performance, if possible).

### How to Connect Composite AV

- When connecting external equipment to your television, match the colors of the connecting jacks (Video: Yellow; Audio: White/Red).
- Connect the yellow video cable from the video output jack on your external equipment (ie: DVD player, set top box) to AV input on the TV's side panel.
- Connect the white/red audio cables for sound from the audio (L/R) output jacks on your external equipment (ie: DVD Player, set top box) to the AV (L/R) jacks on the TV's side panel.

### How to Use

- Press the AV button on the remote control or
- Press the INPUT button on the remote control. Use ▼▲ arrow buttons to highlight the input to view (AV1) then press ENTER.



## Troubleshooting

Check for a possible solution to a symptom before contacting a customer service representative.

Symptom	Possible Solutions
Remote codes for cable / satellite box users	<ul style="list-style-type: none"><li>• 572, 591, 594, 0022, 1397, 11531</li><li>• Call your satellite or cable provider for other available codes.</li></ul>
No color	<ul style="list-style-type: none"><li>• Check the video installation of your external A/V equipment. See pages 9-14.</li></ul>
Cannot receive certain channels through the antenna	<ul style="list-style-type: none"><li>• Perform Channel Auto Scan to add channels to the TV tuner memory. Pg.17</li><li>• For best performance use an outdoor antenna.</li><li>• Readjust your antenna and retry Channel Auto Scan.</li><li>• Signal from the TV station may be weak in your area.</li></ul>
TV signal blocked on certain channels	<ul style="list-style-type: none"><li>• Perform Channel Auto Scan to add channels into the TV tuner memory. See page 17.</li><li>• Check whether the channel was deleted. See page 26.</li><li>• Check parental control settings. See pages 24, 25.</li><li>• Restore default settings. See page 21.</li></ul>
Video noise or choppy picture	<ul style="list-style-type: none"><li>• Readjust antenna. Keep TV away from noise sources, neon lights, and microwave appliances.</li></ul>
No sound	<ul style="list-style-type: none"><li>• Check that connected audio cables are completely inserted.</li><li>• Verify you have selected the correct audio source from your amplifier. See page 15.</li><li>• Mute function may be enabled, press mute on the remote.</li></ul>
Black box on screen	<ul style="list-style-type: none"><li>• The "Text" option is enabled and no text is available.</li><li>• Press the CCD button on the remote control to turn off.</li></ul>
No power	<ul style="list-style-type: none"><li>• Batteries in the remote control may need replacing.</li><li>• Re-attach AC plug to wall outlet after 30 seconds.</li></ul>
No picture	<ul style="list-style-type: none"><li>• Digital TV channel signal may be weak, try another channel.</li><li>• Press INPUT button to verify the desired input selected.</li><li>• Re-connect the antenna or cable wiring.</li><li>• Restore default settings. See page 21.</li></ul>
Remote control does not function	<ul style="list-style-type: none"><li>• Replace batteries with new ones.</li><li>• Check that battery polarity is correct.</li><li>• Point remote directly at the TV's IR receiver. See page 6.</li></ul>