

EASY ASSEMBLY AND OPERATION INSTRUCTIONS

21SV20168 Gargantuan Spider

YOW 1002310727



READ AND SAVE THESE INSTRUCTIONS FOR FUTURE REFERENCE

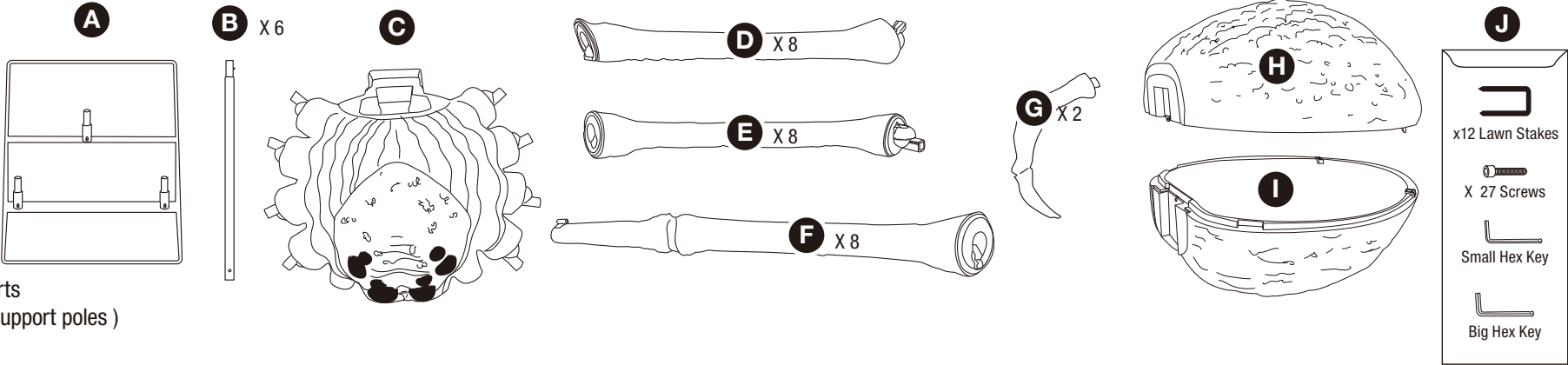
BEFORE ASSEMBLING, REMOVE ALL THE ABOVE PARTS FROM BOX. IF ANY PART IS MISSING OR BROKEN, DO NOT ATTEMPT TO ASSEMBLE THE PRODUCT AND CONTACT SVI CUSTOMER SERVICE FROM 8:30AM TO 5:30PM PST AT 1-855-428-3921, EMAIL CUSTOMERSERVICE@SVIUS.COM, OR CALL THE HOME DEPOT CUSTOMER SERVICE AT 1-877-527-0313.

IMPORTANT TIPS:

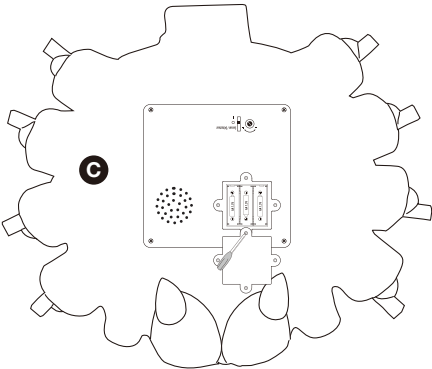
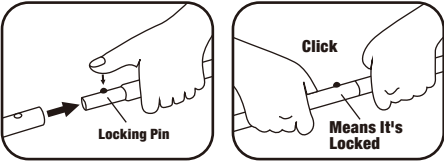
- Ensure that the switch on the function control box is on the desired setting.
- Ensure that the floor or surface that the item sits on is flat and level.
- Assembly takes approximately 45 minutes with two adults.
- Be sure nothing is blocking the sensor.
- If the item still does not work, contact SVI customer service from 8:30am to 5:30pm PST at 1-855-428-3921, email customerservice@svius.com, or call The Home Depot customer service at 1-877-527-0313.

PARTS LIST

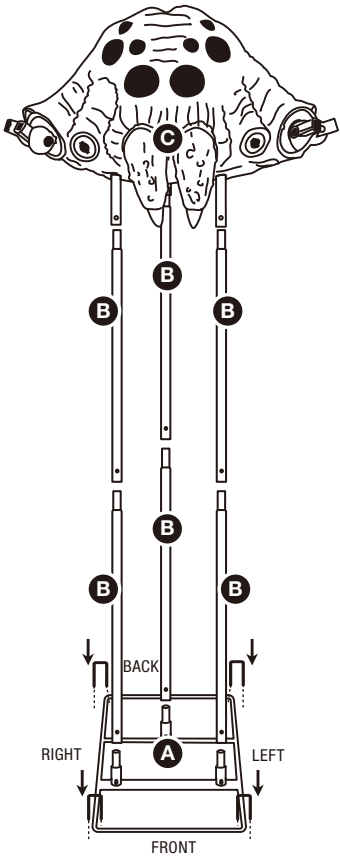
- A. Base x 1
- B. Support Poles x 6
- C. Head x1
- D. Upper Legs x 8
- E. Middle Legs x 8
- F. Lower Legs x 8
- G. Feeder Leg x2
- H. Upper Abdomen x1
- I. Lower Abdomen x1
- J. Polybag with Small Parts
(Attached to the B. Support poles)



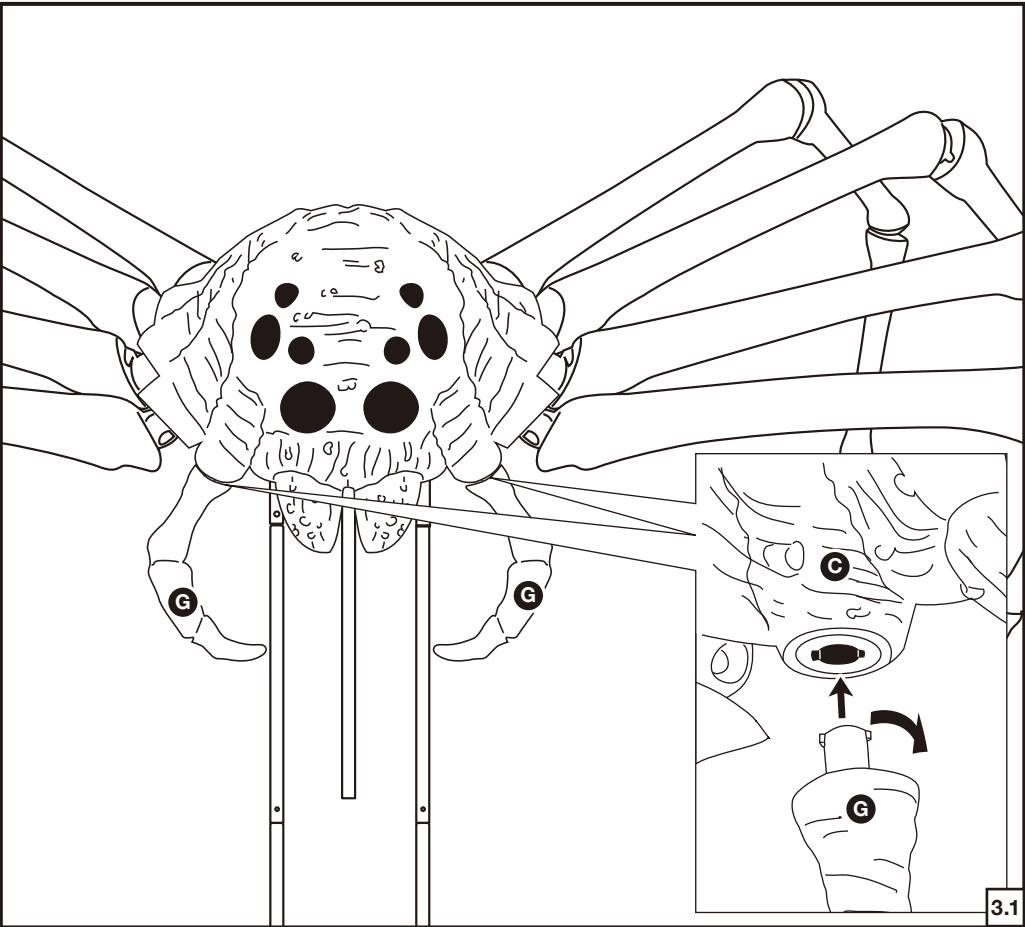
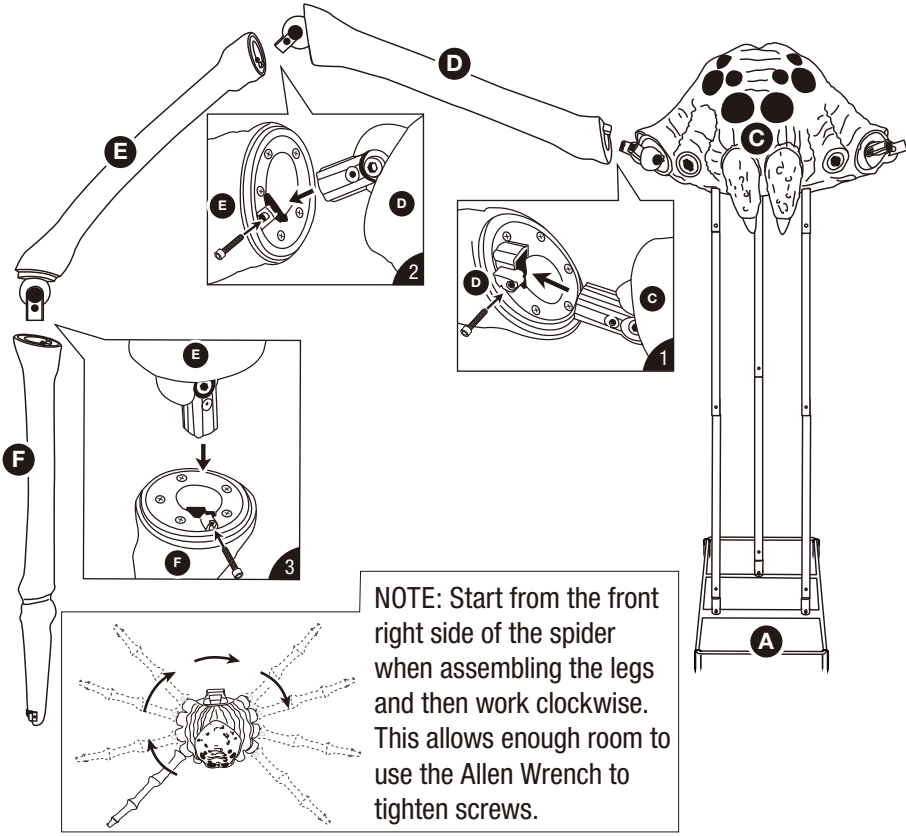
NOTE: Left and right are relative to the character.



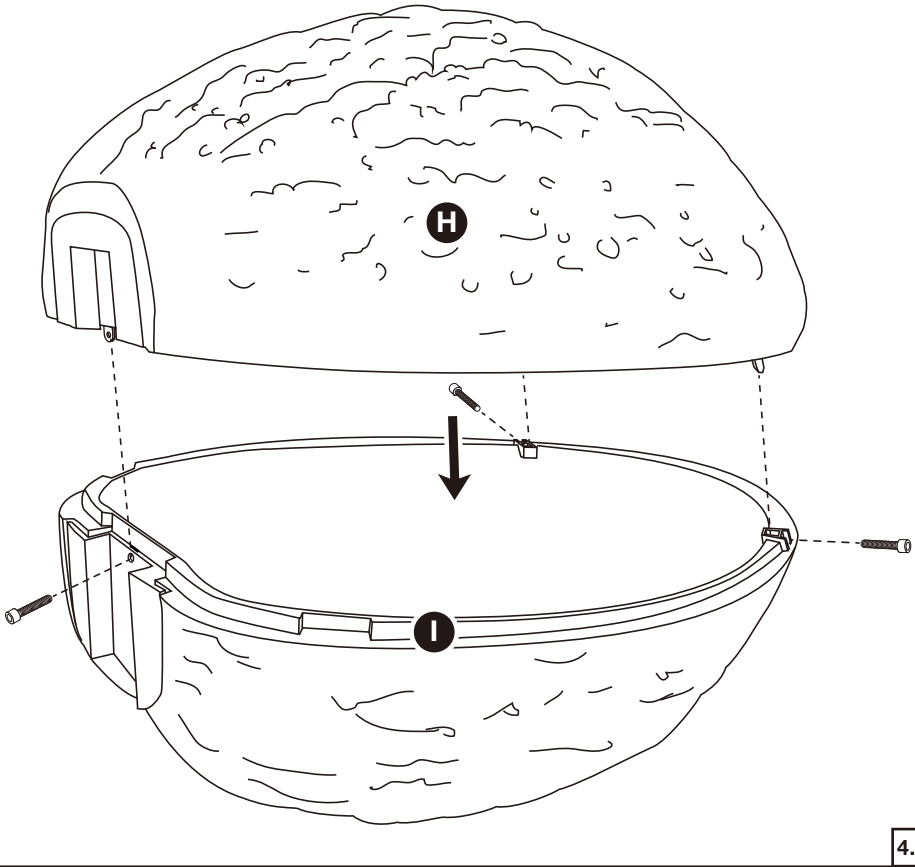
NOTE: Install batteries into the battery box in the (C) Head and turn on to ensure item functions before assembling it.

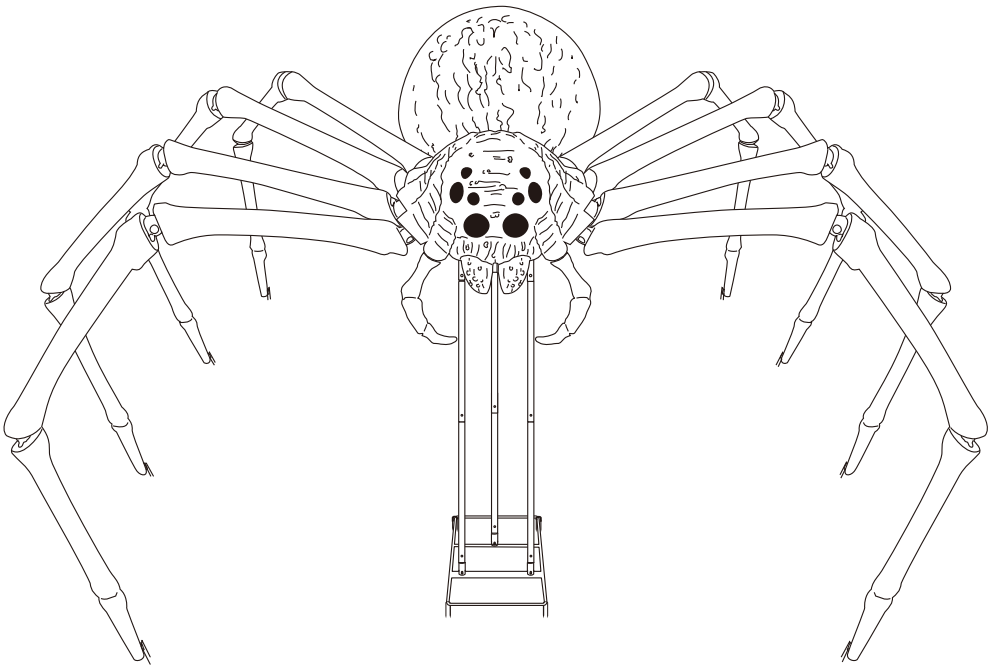
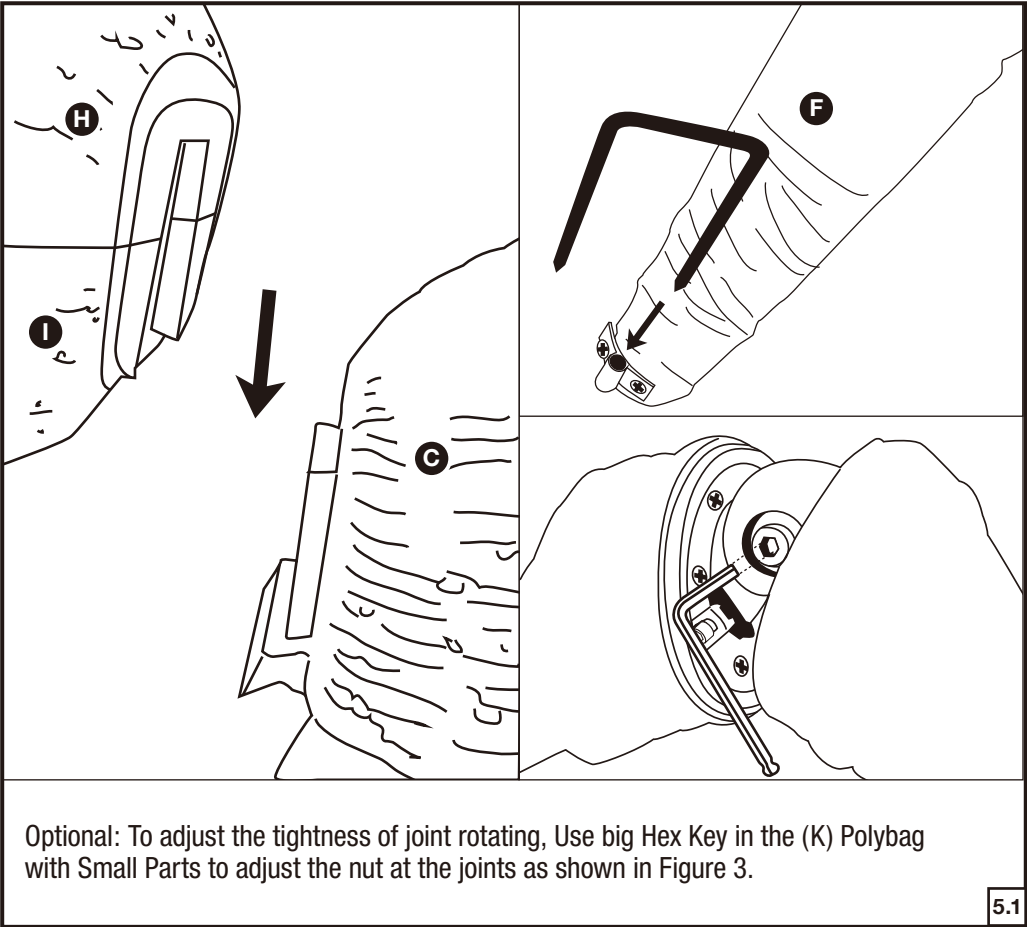


NOTE: Do not overtighten the screw.



NOTE: Do not overtighten the screw.





OPERATION INSTRUCTIONS

Sensor:	This switch mode will activate lights and sound when the Infra-red (IR) sensor is activated and will operate for 1 audio-cycle with each activation. The Infra-red (IR) sensor has a range of up to 2 m/6.5 ft. and will activate when someone comes within an 80-degree angle from left-to-right, as well as from above and below.
○	: This setting will turn off lights and sound.
I	: This switch mode will continually operate the lights and sound of the item.
⌚	: Raise or lower the volume using the volume control turn dial, turn and click all the way down to turn the volume off.

WARNING

This item is not a toy and should be used for decoration only. This item contains small parts that can be a choking hazard. Keep all plastic and wire parts away from children.

1. Please use the adapter supplied by manufacturer.
2. Please assemble item according to instructions. Connect all wires according to matching color.
3. Children should be supervised by adults. Item should not be grabbed, as it becomes a tipping hazard. Keep flammables away from the adapter, as it heats up during operation.

Please view all instructions carefully before assembling. Save this instruction sheet for future reference.

CARE AND STORAGE INSTRUCTIONS

For best performance operate your item indoors. When not in use, store this product in its original packing. Keep away from heat and moisture.

FOR OUTDOOR USE

BATTERY REPLACEMENT INSTRUCTIONS

Requires 3 x 1.5V AA batteries (Included)
* You will need a small screwdriver (Not Included).
Locate the battery compartment on the product. Remove the battery compartment cover by using a small Phillips head screwdriver to unscrew the screw. After removing or installing the batteries, place the battery compartment cover into position, and secure the battery cover. DO NOT overtighten screws.

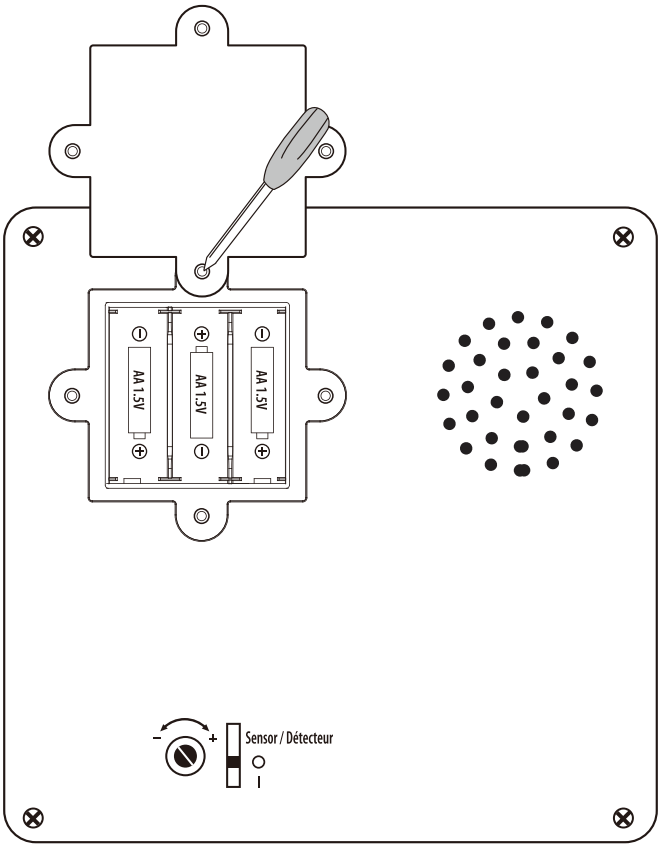
Do not mix alkaline, standard (carbon-zinc), or rechargeable (nickel cadmium) batteries. Do not mix old and new batteries. Rechargeable batteries to be removed from the product before being charged. Only batteries of the same or equivalent type as recommended are to be used. Rechargeable batteries are only to be charged under adult supervision. Non-rechargeable batteries are not to be recharged. Batteries are to be inserted with the correct polarity. Remove batteries if consumed or if product is to be left unused for a long time. The supply terminals are not to be short-circuited. Dispose of batteries safely. DO NOT DISPOSE OF BATTERIES IN FIRE, BATTERIES MAY EXPLODE OR LEAK

This device complies with Part 15 of the FCC Rules. Operation is subject to the following two conditions: (1) This device may not cause harmful interference, and (2) this device must accept any interference received, including interference that may cause undesired operation.

CAUTION: Changes or modifications not expressly approved by the party responsible for compliance could void the user's authority to operate the equipment.

NOTE: This equipment has been tested and found to comply with the limits for a Class B digital device, pursuant to Part 15 of the FCC Rules. These limits are designed to provide reasonable protection against harmful interference in a residential installation. This equipment generates, uses, and can radiate radio frequency energy and, if not installed and used in accordance with the instructions, may cause harmful interference to radio communications. However, there is no guarantee that interference will not occur in a particular installation. If this equipment does cause harmful interference to radio or television reception, which can be determined by turning the equipment off and on, the user is encouraged to try to correct the interference by one or more of the following measures: Reorient or relocate the receiving antenna, Increase the separation between the equipment and receiver. Connect the equipment into an outlet on a circuit different from that to which the receiver is connected. Consult the dealer or experienced radio/TV technician for help.

CAN ICES-3(B)/NMB-3(B)



**BATTERY BOX
LOCATED
UNDER THE
HEAD OF THE
SPIDER**

© Seasonal Visions International
Emeryville, CA 94608
Tel: 510-428-3921
All Rights Reserved
MADE IN CHINA