

FOG TIMER USER MANUAL

USA/ États-Unis 1003117433
Canada 1001109948
YOW 1003027617

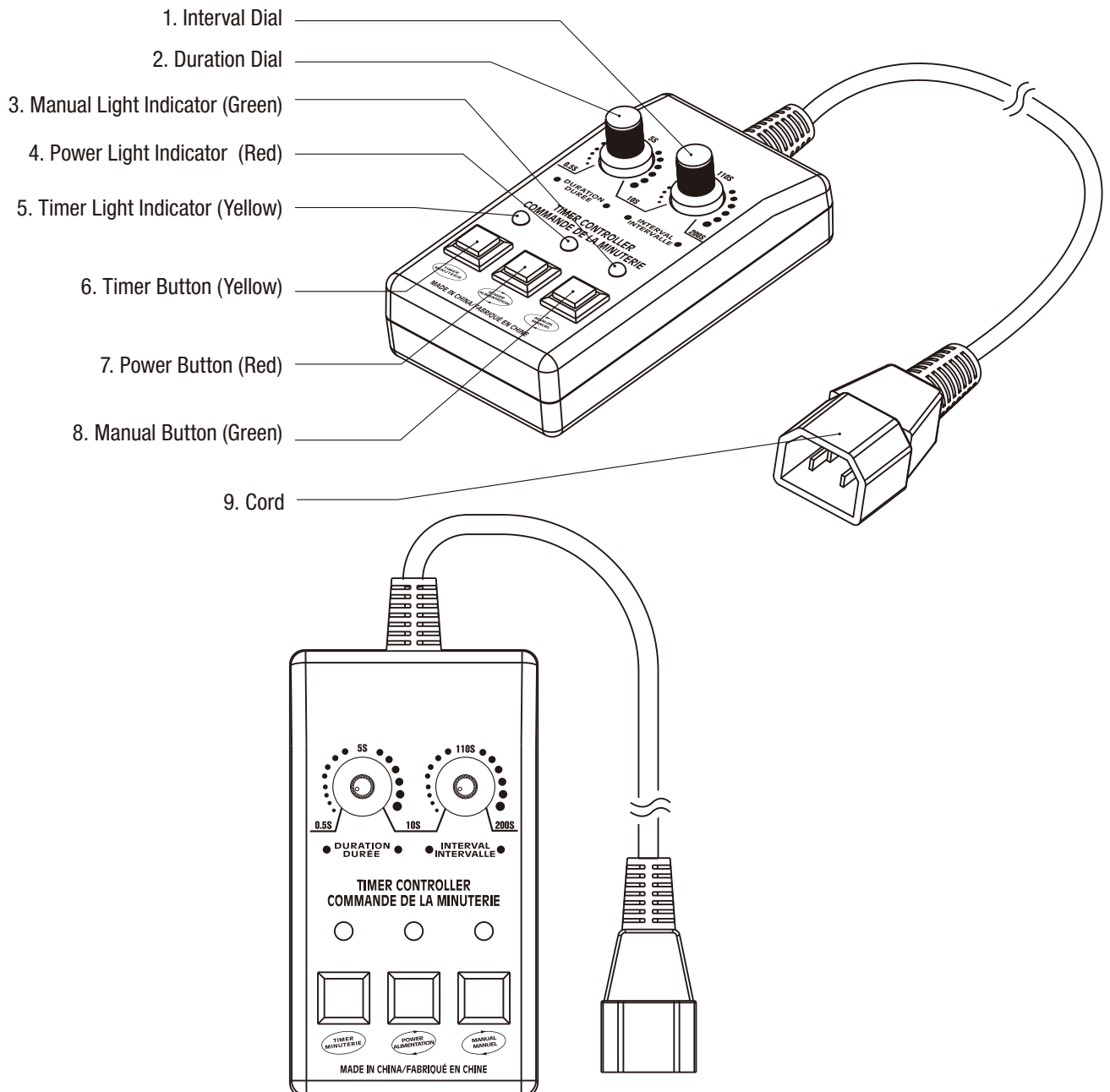


FOR INDOOR USE ONLY

IMPORTANT SAFETY INSTRUCTION READ AND SAVE THESE INSTRUCTIONS FOR FUTURE REFERENCE

IMPORTANT TIPS:

- The fog machine needs time to warm up before it can produce fog. This may take 3-5 minutes. The fog machine will be ready to produce fog when the red (4) Power Light Indicator activates.
- To produce fog, when the (4) Power Light Indicator is on, press either the yellow (6) Timer Button or (8) Manual Button depending on preference. Fog will flow from the fog machine according to adjusted settings.
- The Fog Machine only works when the (4) Power Light Indicator is on. If the light is off, this means the Fog Machine needs more time to warm up.
- The fog machine needs to warm up after each burst. The duration and interval of each fog blast may influence the amount of time it takes for the fog machine to warm up. If you want more instant fog, we suggest using a shorter duration with a longer interval. Otherwise if the duration is too long with a short interval, the fog machine can only afford very limited burst and will require 2-3 minutes to warm up.
- If you have any broken or missing parts, please call customer service at 1-877-527-0313 before returning to the store.



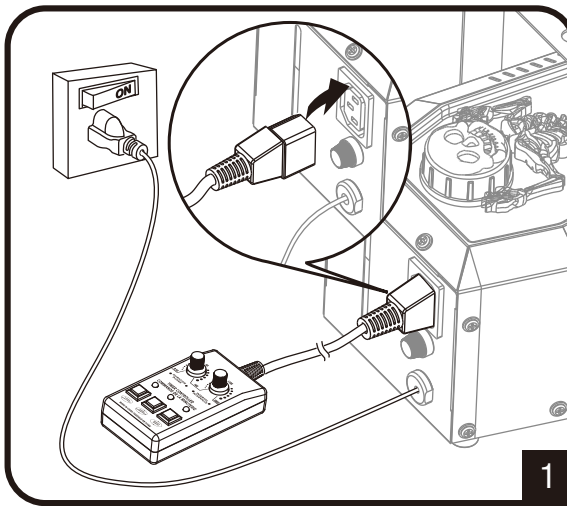
INSTRUCTION

1. Connect the power control (9) Cord to the socket at the back of the Fog Machine.

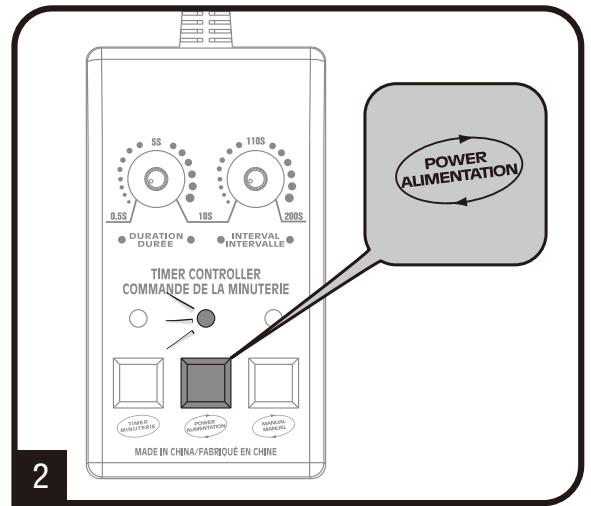
2. Push the red (7) Power Button in the middle. After the fog machine is ready, the red (4) Power Light Indicator on the remote will light up, indicating that the fog machine has warmed up.

3. When the green (8) Manual Button is pushed only when the red (4) Power Light Indicator is on, the Fog Machine will spray fog. While pressing this button, the green (3) Manual Light Indicator will activate. When the button is released, the light and fog deactivate.

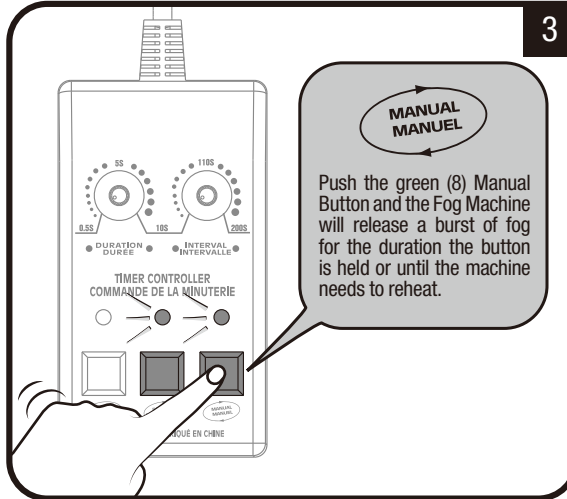
4. If you push the yellow (6) Timer Button only when the red (4) Power Light Indicator is on, the yellow (5) Timer Light Indicator will activate and the Fog Machine will release bursts of fog according to the adjusted timer.



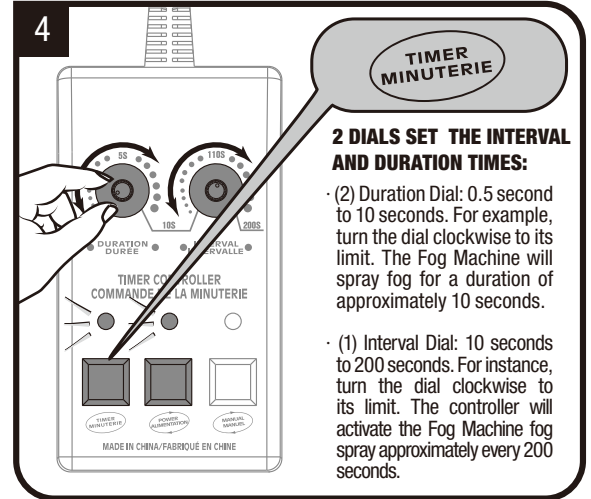
1



2



3



4

NOTE

This device complies with Part 15 of the FCC Rules. Operation is subject to the following two conditions: (1) this device may not cause harmful interference, and (2) this device must accept any interference received, including interference that may cause undesired operation.

Warning: Changes or modifications to this unit not expressly approved by the party responsible for compliance could void the user's authority to operate the equipment. This equipment has been tested and found to comply with the limits for a Class B digital device, pursuant to Part 15 of the FCC Rules. These limits are designed to provide reasonable protection against harmful interference in a residential installation. This equipment generates, uses and can radiate radio frequency energy and, if not installed and used in accordance with the instructions, may cause harmful interference to radio communications. However, there is no guarantee that interference will not occur in a particular installation. If this equipment does cause harmful interference to radio or television reception, which can be determined by turning the equipment off and on, the user is encouraged to try to correct the interference by one or more of the following measures:

- Reorient or relocate the receiving antenna.
- Increase the separation between the equipment and receiver.
- Connect the equipment into an outlet on a circuit different from that to which the receiver is connected.
- Consult the dealer or an experienced radio/TV technician for help.

WARNING

To prevent risk of personal injury, fire, and electric shock:

- Never leave unit unattended while plugged in. Unplug when not in use or refilling.
- Connect only to a properly grounded outlet.
- For use only in covered areas. Keep unit dry, do not expose to rain or moisture.
- Keep product out of reach of children. Use only under adult supervision.
- Clean unit before storage to avoid damages.

CAUTION

- Risk of burn, fire or electric shock.
- Please read instruction manual before using.
- Don't immerse in liquid.
- Changes or modifications not expressly approved by the party responsible for compliance could void user's authority to operate the equipment.

STORAGE

When not in use, store in its original packaging in a cool, dry location.

INSPECTION

Before each use, check unit for any cracks in the enclosure, remote control, cords, and plugs. Make sure there are no exposed wires. Do not use if any of the above conditions are found.

TROUBLESHOOTING

Issue	Correction
Timer is not activating the fog machine.	<ul style="list-style-type: none"> · Ensure that the (4) Power Light Indicator is on when pressing buttons. This turns on 3-5 minutes after the fog machine warms up. · There may be an issue with the fog machine instead of the fog machine timer, please see fog machine's TROUBLESHOOTING section.
Even with a timer, fog machine will not produce constant fog, it stops and starts	This is how the fog machine is supposed to work. You will need to wait for the machine to reheat between fog bursts. With the Fog Machine Timer, the fog spray will automatically activate according to the adjusted settings. The fog machine will still need to reheat between each burst of fog.
Fog output burst is too long/short.	Try adjusting the (2) Duration Dial for a longer/shorter blast of smoke and see which position matches your preference.
Time between fog blasts is too short/long.	Try adjusting the (1) Interval Dial for a longer or shorter wait time between blasts. See which position matches your preference.
Missing parts	Please call customer service at 1-877-527-0313 so a replacement can be sent to you.
Still experiencing an issue	Please call customer service at 1-877-527-0313 for further assistance.

TECHNICAL SPECIFICATIONS

Item Code: 21SV01974

Model #: FT-A

Rating Voltage: 120V, 60Hz

© Seasonal Visions International
Emeryville, CA 94608
Tel: 510-428-3921
All Rights Reserved
MADE IN CHINA