

# CLEANUP

## CLEANING NOTES - READ BEFORE CLEANING

- When using latex material, clean sprayer and components with warm, soapy water. For oil based material use mineral spirits. Never use mineral spirits with latex materials.
- NEVER use gasoline to clean sprayer.
- Dispose of used cleaning solution properly.
- Thorough cleaning and lubrication of sprayer is important to ensure proper operation after storage.
- If you flush your sprayer with mineral spirits, repeat Cleanup instructions using warm, soapy water.
- **DO NOT SPRAY PUMP ASSEMBLY WITH WATER OR CLEANING SOLUTION.**

## FOLLOW THESE STEPS WHENEVER CLEANING WITH MINERAL SPIRITS:

- If spraying or cleaning with oil-based materials, the spray gun must be grounded while preparing the spray hose or cleaning.
- Ground the gun by holding it against the edge of a metal container while purging. Failure to do so may lead to a static electric discharge which may cause a fire.
- Always flush spray gun at least one hose length from spray pump.
- If collecting flushed solvent in one gallon metal container, place it into an empty five gallon container, then flush.
- Area must be free from vapors.
- Follow all cleanup instructions.

## YOU WILL NEED

- Warm, soapy water if using latex material
- Mineral spirits if using oil-based material
- Empty waste container
- Soft-bristled brush

1. Perform **Pressure Relief Procedure** (page 7).
2. Remove the tip guard from the spray gun.
3. Empty the tank of spray material (see **Moving / Emptying the Sprayer**, page 7).  
Rinse the tank with the appropriate cleaning solution until clean.  
Dispose of the cleaning solution, and then fill the tank again with NEW cleaning solution. Do not run the sprayer without spray material or water in the tank.
4. Remove the spray tip from the tip guard. Carefully place both into the tank full of cleaning solution.



Allowing the spray tip and tip guard to soak in the tank while flushing will make it easier to clean them afterwards.

Take care not to lose the saddle seat and washer located inside the rear of the spray guard.

5. Point the spray gun at the side of a waste container.



Ground the gun against the side of a metal waste container if flushing with mineral spirits.

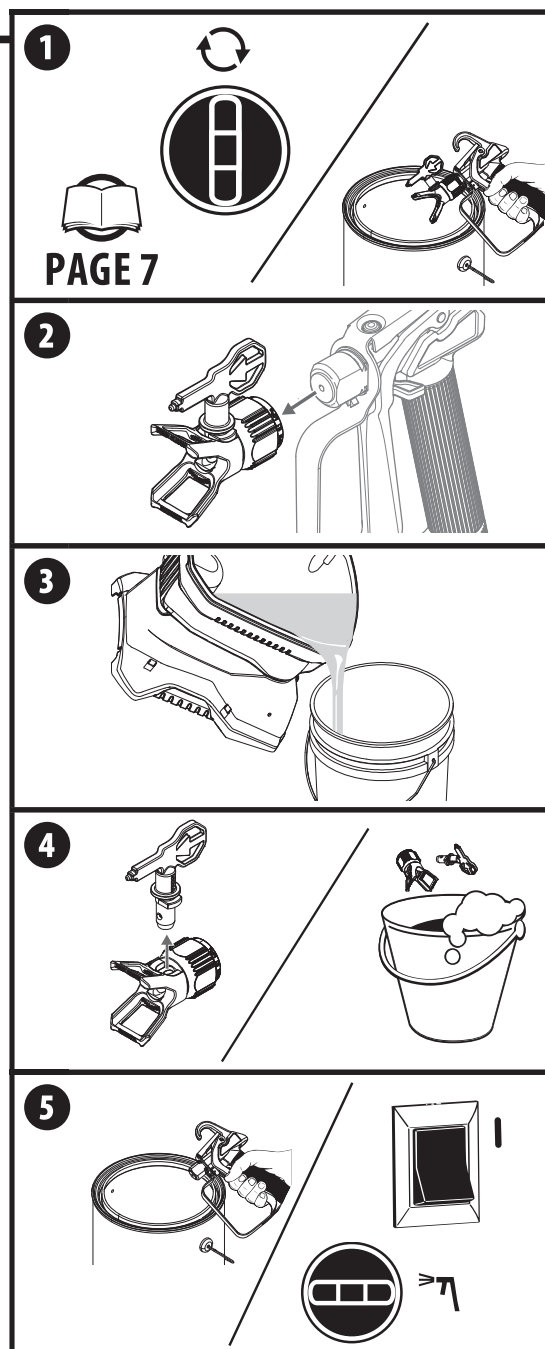
**DO NOT SPRAY THE PUMP ASSEMBLY WITH WATER OR CLEANING SOLUTION.**

While squeezing the trigger, turn the sprayer ON (I), and turn the PRIME/SPRAY knob to SPRAY.

Continue squeezing the trigger until fluid is coming out clear. You may need to get new cleaning solution and repeat.

The sprayer will not spray air. It must have spray material or water in the tank.

(Continued on the next page)



## CLEANUP - CONTINUED

6. Perform **Pressure Relief Procedure** (page 7).
7. Remove the inlet filter. Clean by hand using a soft-bristled brush. Snap back into place when clean.  
Remove the tip guard and spray tip from the cleaning solution. Clean by hand using a soft bristled brush.
8. **IMPORTANT STEP:** Fill the tank with warm, soapy water. Following steps 5-7 in the "Spraying" section, spray at least one gallon of warm, soapy water. This will ensure that the spray tip will be completely clean for the next use.
9. Perform **Pressure Relief Procedure** (page 7).
10. Remove the spray tip assembly.  
Repeat step 5 from above, continuing to squeeze the trigger until fluid comes out clear.



This pump is liquid-cooled. Do not allow the sprayer to run without paint or water in the tank.

11. Turn PRIME/SPRAY knob to PRIME. Turn power OFF.  
Replace the spray tip/tip guard assembly.
12. Grip the spray hose fitting near the spray gun with a wrench. Loosen and remove the spray hose from the gun.
13. Place a wrench on the outlet valve to secure it. Using the second wrench, remove the spray hose.  
Hold one end of the spray hose higher than the other and drain the hose of all cleaning solution into a waste container. Properly dispose of the cleaning solution.

Move on to the Long Term Storage steps, next page.

