

**3pc Folding Bistro Set -  
Black/White Wicker Chair  
with Black Table**

**StyleWell.™**

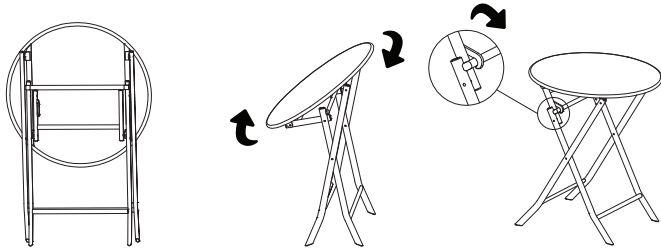
ITEM #1005 586 164  
MODEL #FDS40081-ST

**Use and Care  
Guide**

**Operation**

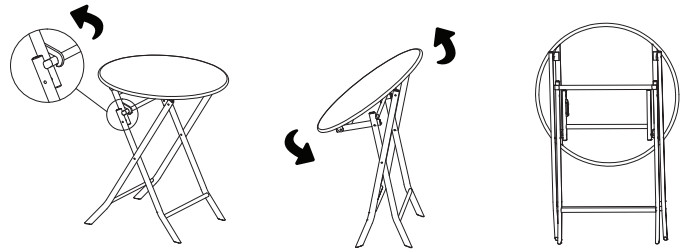
**1 OPENING THE TABLE**

- Slide the table top upwards until the legs fully extend outward and latch the hook to the legs.



**2 FOLDING THE TABLE**

- Unlatch the lock, slide the table top downwards until the legs collapse. Do not place heavy objects on the table top.



**Safety Information**



**WARNING:** Never use this product as a support. Do not shake, lean, or climb on the product at any time.



**WARNING:** Do not place heavy objects on the table top.

**Care and Cleaning**

- For best results, clean the frame with a damp cloth and dry thoroughly. This will help prevent mildew by removing dirt particles that may accumulate.
- Do not clean with abrasive materials, bleach, or solvents.
- Store the table in a dry, sheltered place when not in use.
- Keep the table away from fire, extreme heat, freezing conditions, and inclement weather such as rain, sleet, snow, or wind.

**Warranty**

**1 YEAR FRAME WARRANTY**

**WHAT IS COVERED**

We warrant the frames to be free of manufacturing defects to the original purchaser for one year.

**WHAT IS NOT COVERED**

It remains the customer's responsibility for freight and packaging charges to and from our service center. This warranty does not cover commercial use, hardware, acts of nature, fire, freezing and abusive use. In addition, purchased parts are not covered under this warranty. We reserve the right to make substitutions with similar merchandise, if the model in question is no longer in production.

Contact the Customer Service Team at 1-877-527-0313 or visit [www.HomeDepot.com](http://www.HomeDepot.com).



## 3pc Folding Bistro Set - Black/White Wicker Chair with Black Table

# StyleWell.™

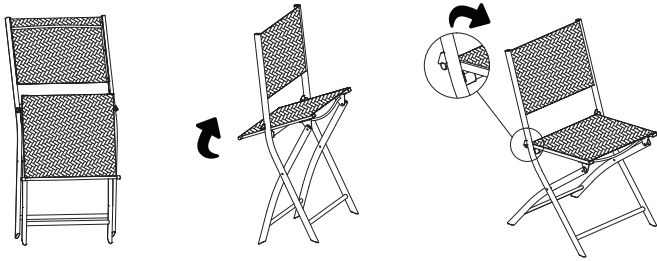
ITEM #1005 586 164  
MODEL #FDS40081-ST

## Use and Care Guide

### Operation

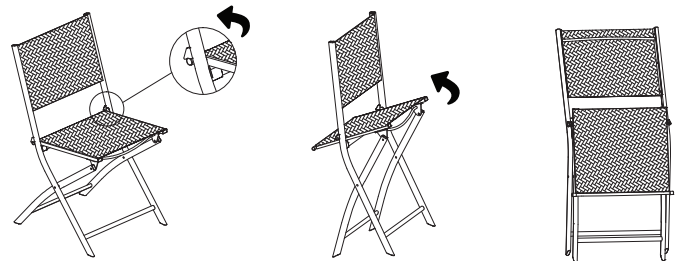
#### 1 OPENING THE CHAIR

- Slide the seat downward and the backrest backward until the legs fully extend outward.



#### 2 FOLDING THE CHAIR

- Lift the seat upward and the backrest forward to fold the chair.



### Safety Information



**WARNING:** Never use this product as a support. Do not shake, lean, or climb on the product at any time.



**WARNING:** The weight limit for this chair is 225 lbs (102.05 kg).

### Care and Cleaning

- For best results, clean the frame with a damp cloth and dry thoroughly. This will help prevent mildew by removing dirt particles that may accumulate.
- Do not clean with abrasive materials, bleach, or solvents.
- Store the chair in a dry, sheltered place when not in use.
- Keep the chair away from fire, extreme heat, freezing conditions, and inclement weather such as rain, sleet, snow, or wind.

### Warranty

#### 1 YEAR FRAME WARRANTY

##### WHAT IS COVERED

We warrant the frames to be free of manufacturing defects to the original purchaser for one year.

##### WHAT IS NOT COVERED

It remains the customer's responsibility for freight and packaging charges to and from our service center. This warranty does not cover commercial use, hardware, acts of nature, fire, freezing and abusive use. In addition, purchased parts are not covered under this warranty. We reserve the right to make substitutions with similar merchandise, if the model in question is no longer in production.

Contact the Customer Service Team at 1-877-527-0313 or visit [www.HomeDepot.com](http://www.HomeDepot.com).