

# Installation Instructions

## High Performance Security Light

### MB3000

#### What is included per light:

- 3 screws & 3 anchors
- Mounting bracket

#### What you need to install:

- 4 D-cell alkaline batteries
- 1 screwdriver (Phillips)
- 1 screwdriver (flathead)
- Drill (1/4" drill bit for drywall installation)

#### Spotlight Features:

**Motion/Light Sensor:** The light instantly turns on when it detects motion from up to 30 feet away. The light sensor conserves battery life by preventing the light from activating in daylight.

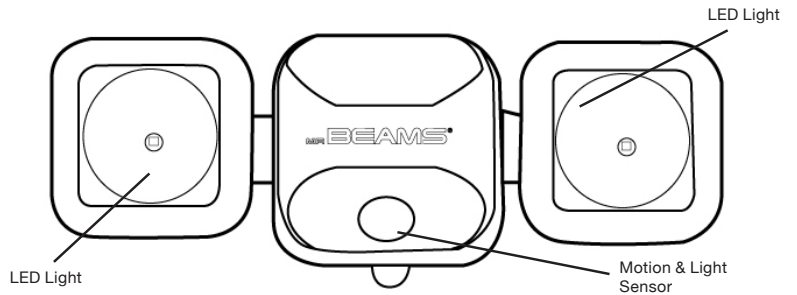
**Auto Shut-off:** Light shuts off automatically after 20 seconds if no motion is detected.

**Bright LED:** 500 lumens cover up to 800 sq ft.

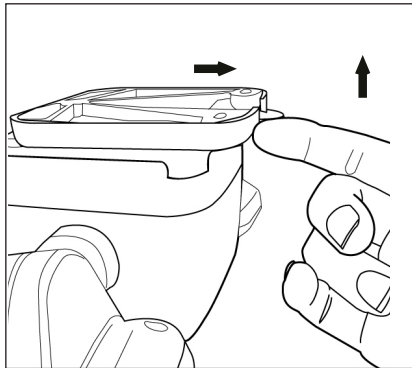
**Durable, Weather Resistant:** Tight seals and UV resistant material allow the light to work in all weather conditions.

#### Tips:

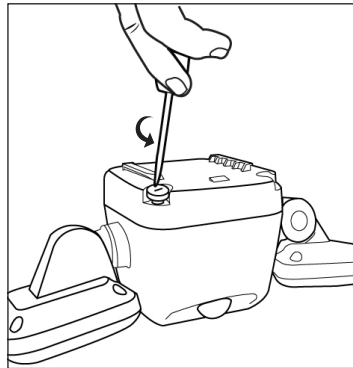
- Use only new alkaline D-Cell batteries with 1.5V rating.
- Do not mix old and new batteries. If batteries are not new, it may cause the light to malfunction.
- Install batteries with polarity in correct position.
- Light may activate when batteries are inserted. Simply take light into a dark room, allow batteries to settle, then test activation.
- **If your light will not turn off, it means that it is time to replace the batteries.**



**NOTE: Light sensor only allows light to activate in darkness. We recommend you test in a dark room or closet.**



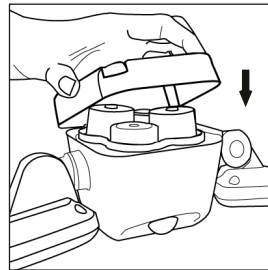
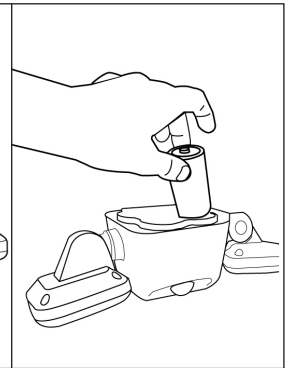
1. To remove the back plate from the light, use your finger to push up on the mounting bracket tab. This will unlock the bracket. Then slide the bracket down off the back of the light.



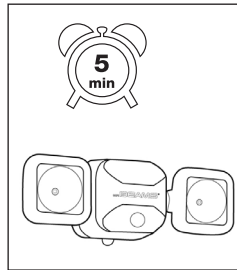
2. Use a screwdriver to loosen the four screws on the back plate. The screws will not come out all the way.



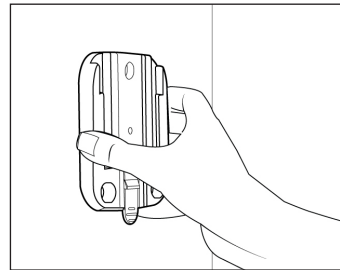
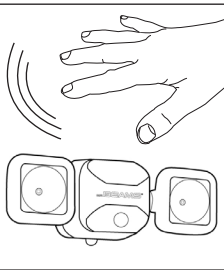
3. Lift the battery lid off the back of the light. Insert 4 D-Cell batteries with the flat ends against the springs.



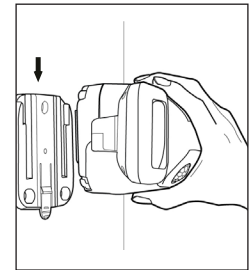
4. Replace the battery lid and make sure the screws are twisted in tightly.



5. Before mounting your light, test the motion sensor in a dark closet or bathroom. Close the light in the dark room and leave for up to 5 minutes. When you re-enter the room, the light should activate with motion.



6. Determine mounting location for the light. Place the mounting plate on the surface so that the tab is pointing down and mark the pilot holes for drywall. Use a drill to insert the anchors, then line up the mounting plate with the holes and drill screws in.



7. Line up the light with the mounting plate and slide the light into the grooves.

#### Battery Caution:

- 1) Do not mix old and new batteries
- 2) Do not mix alkaline, standard (carbon-zinc) or rechargeable (nickel cadmium) or (nickel metal hydride) batteries
- 3) Do not dispose of batteries in fire
- 4) Batteries should be recycled or disposed of as per state and local guidelines