

Intended use

Only use the product described in this manual as follows:

- For pumping normal pond water for filter systems, waterfall systems and water course systems.
- For household use only.
- Operate in accordance with instructions. (→Technical data)

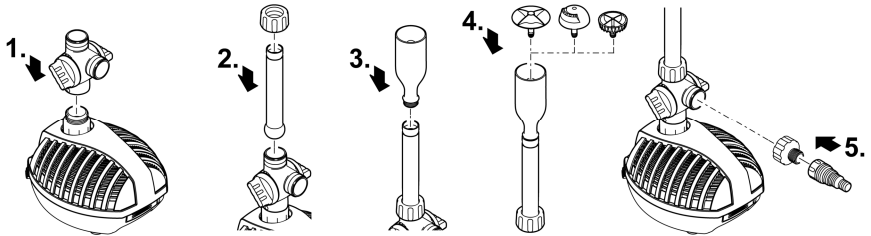
The following restrictions apply to the unit:

- Do not use in swimming ponds.
- Never use the unit with fluids other than water.
- Never run the unit without water.
- Do not use for commercial or industrial purposes.
- Do not use in conjunction with chemicals, foodstuff, easily flammable or explosive substances.

Installation and connection

Installing the water feature

In addition to the water feature, you can connect a rivulet or waterspout to the stepped hose adapter (hose diameter 1/2, 3/4 or 1 in).



ARS0038

Installing the pump

⚠ WARNING

Severe injuries or death due to operation of this unit in a swimming pond. Defective electrical components will electrify the water with dangerous electrical voltage.

- ▶ Never operate the unit in a swimming pond.

⚠ WARNING

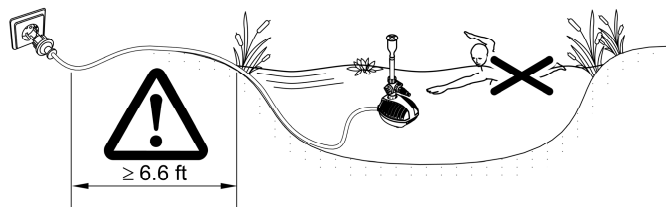
The unit is subject to dangerous voltage and must not be installed directly adjacent to the water. Otherwise there is a risk of severe injuries or death by electrocution.

- ▶ Install the unit at a distance of at least 2 m from the water to ensure that it is protected against flooding.

- Ensure that the connection to the power supply is at least 6.6 ft from the pond.
- Place the pump horizontally on a stable, mud-free surface.
- The pump is under water, the nozzle intake emerges from the water.

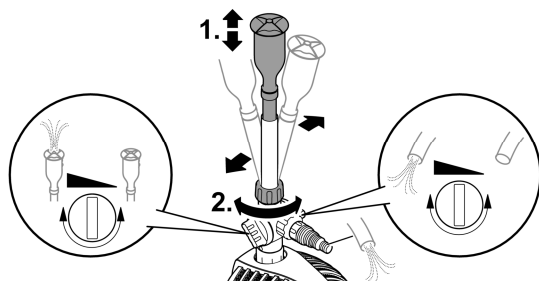
TIP! Thoroughly clean the pond or pool and place the pump approx. 200 mm above the bottom of the pond, so that no muddy water runs through the pump.

- Muddy water will cause the nozzle to clog faster and the impeller unit to become worn prematurely.



ARS0045

Adjusting the water feature



ARS0040

Commissioning/start-up

⚠ WARNING

Risk of electric shock. This unit is supplied with a grounding conductor and ground-type attachment plug.

- ▶ To reduce the risk of electric shock, be certain that the unit is connected only to a properly grounded, ground-type receptacle.

NOTE

Never connect the pump to a dimmer. Otherwise the pump will be destroyed.

- **Switching on:** Plug the power plug into the outlet.
 - The unit switches on immediately.
- **Switching off:** Pull the power plug from the outlet.

Maintenance and cleaning

NOTE

Never use chemical cleaning agents. These are hazardous to animals, plants and the environment.

- ▶ Only use clear water and a soft brush to clean the unit.

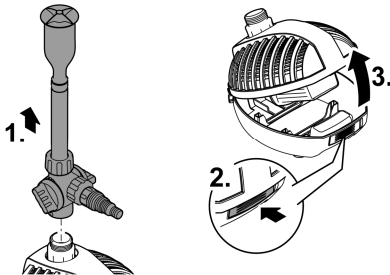
Recommendation regarding cleaning:

- ▶ Clean the unit as required, but at least twice a year.
- ▶ When cleaning the pump, pay particular attention to the impeller unit and the pump housing.

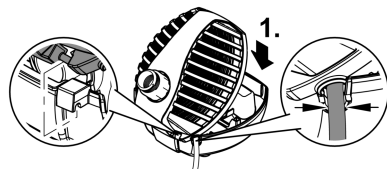
Opening/closing the housing

Before closing the housing, place the power cable in the recess in the housing to prevent it from being crushed.

Opening the housing



Closing the housing

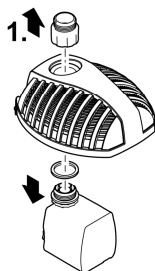


ARS0041

ARS0042

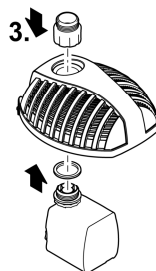
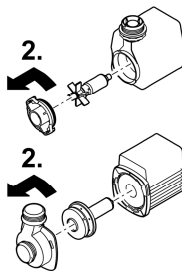
Cleaning/replacing the impeller unit

- Remove the pump cover or pump housing from the motor housing by turning it counter-clockwise (bayonet catch).
- After removing the impeller unit, clean all parts under running tap water.
- Replace a worn or damaged impeller unit.
- Assemble in the reverse order.



Aquarius
Fountain Set Eco
250

Aquarius
Fountain Set Eco
550, 825, 1100



ARS0046

Storage/winter protection

The unit is not frost-proof and has to be removed and put into storage if minus temperatures are expected.

How to correctly store the unit:

- Thoroughly clean the unit, check it for damage and replace any damaged parts.
- Store the pump submerged and in a frost-free environment.

Malfunction remedy

Malfunction	Possible cause	Remedy
Pump does not run	No mains voltage	Check the mains voltage.
	Impeller unit blocked	Clean the impeller unit
Insufficient delivery rate	Impeller unit running sluggishly	Clean the impeller unit
	Filter housing clogged	Clean the filter housing.
	Pressure loss in the hose too high	<ul style="list-style-type: none"> • Reduce the hose length and connecting pieces to a minimum • Route hose in a straight line
Unit switches off after a short running period	Water temperature too high	Adhere to the maximum water temperature of +77 °F (+35 °C)
	Unit is overloaded	<ul style="list-style-type: none"> • Remove blockage • The unit will switch on again automatically as soon as it has cooled down.