

FLUIDMASTER® 7514

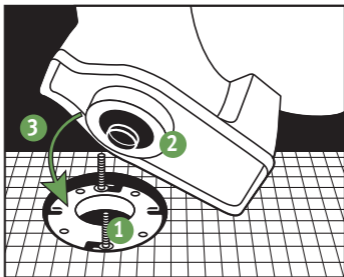
REINFORCED EXTRA THICK WAX RING KIT

INSTALLATION INSTRUCTIONS

INSTRUCTIONS: Be sure that wax gasket is at least 70°F to insure proper flow of wax.



- 1 Place bolts in floor flange, secure with retainer washer.
- 2 Press reinforced wax ring with flange on bowl outlet, extend flange away from the bowl.
- 3 Set bowl in place and use body weight to compress wax. Twist bowl slightly to spread wax.
4. Place washer and nut on bolt. Tighten bolts carefully to prevent breaking bowl.



For floor outlet toilet bowls. Ready for use at 70°F temperature. Will not harden or deteriorate. Forms a gas-tight, odor-tight and watertight seal.