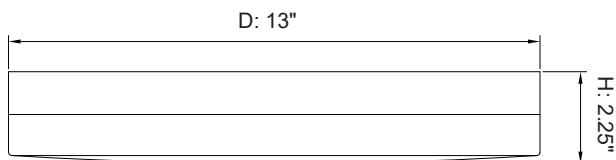




- Integrated LED light source
- 120V AC 60HZ
- Color Temperature: 4000K
- Lifespan more than 50,000 hours



FM071324D-840SL
Model

D 13"x H 2.25"
Size (inch)

24W
Watts

1600 Lumens
Brightness

Silver
Finish

Technical support available at Monica@wayspride.com

LIMITED ONE YEAR WARRANTY

If within one (1) year from the date of purchase, the product fails due to a defect in material or workmanship, WaysPride LLC (Genesis Lighting) will repair or replace it free of charge. WaysPride LLC will not be liable for incidental or consequential damages to purchases, or any other party.

For any loss, damage, injury or expense of any kind or nature caused directly or indirectly by the product or the failure of the product to operate properly.

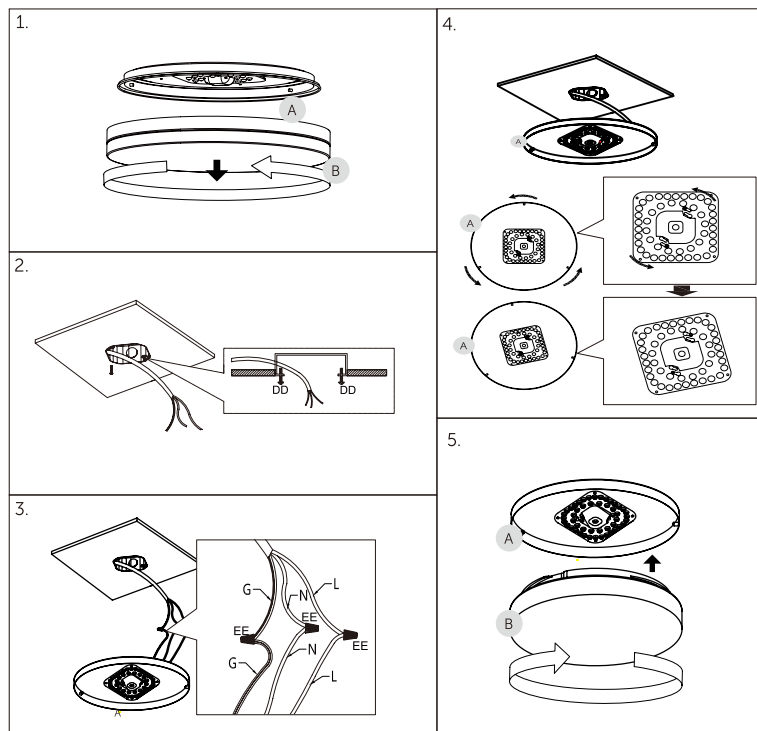
Warranty service is available by mailing postage prepaid to:
WaysPride LLC. 730 Dawson DR KH0158, Newark, Delaware, 19713 USA

A valid copy of the original invoice and return merchandise authorization (RMA) are required for all warranty services.

INSTALLATION STEPS:

1. Rotate the light shade (B) to remove it from the fixture pan (A).
2. Thread the mounting screws into the outlet box. Do not tighten.
3. Connect the fixture wires. Carefully tuck all wires back into the junction box.
4. Place the fixture pan over the junction box and feed fixture screws through keyhole slots. Rotate the fixture pan clockwise until screws lock into the narrow end of the keyhole slots and tighten screws firmly.
5. Add the light shade (B) and rotate to the right to secure.

Notes: Dimmer not included, recommend Lutron brand for DSL06, TGCL-153P, DVCL-153P.



WARNING:

RISK OF PERSONAL INJURY PLEASE READ THESE INSTRUCTIONS CAREFULLY. FOLLOW ALL INSTALLATION INSTRUCTIONS AND OBSERVE ALL WARNINGS.

Make sure the "supply" voltage corresponds to the "rated" product voltage 120V 60Hz. If you are an installer, please give these instructions to the property owner for future reference.

Risk of injury: Always wear the necessary safety equipment to prevent injuries while opening, handling, installing, and maintaining this product.

Risk of Fire: Always consult with a qualified electrician to ensure the correct branch circuit conductor is utilized.

Risk of electrical shock: This product must be installed in accordance with the applicable installation code by a professional familiar with the construction and operation of the product. The professional should also be aware of, and understand, the hazards involved with the installation of this product.