

Quick Start

1. Download and open Ring app.

Select Set Up a Device

2. Scan QR code with Ring app.

Use this code or the one on your device to continue setup.



Hardware included



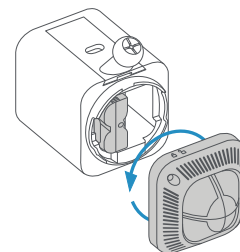
Tools needed



! Remove protective film from device.
• This ensures your device works properly.

Remove the battery.

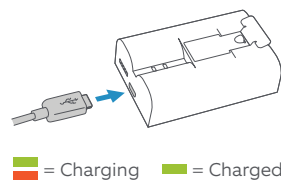
Twist the battery compartment counterclockwise to unlock and remove the cover.



Then, remove the battery and discard the orange battery insulator.

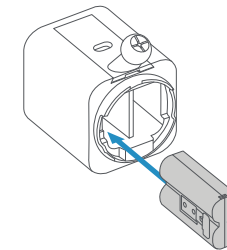
Charge the battery.

Plug it into a power source using the provided USB cable. Once the battery's fully charged, only one light on top will glow green.

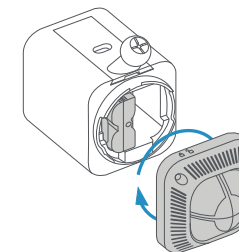


Re-insert the battery.

Slide the battery back into the camera until it clicks into place.



Twist the battery compartment cover clockwise to lock it and tighten the security screw.

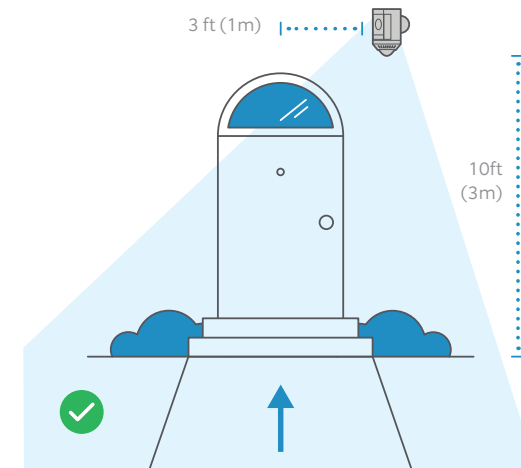


Choose a location with the view you want.

Your camera can be mounted on an outdoor wall, eave, or overhang.

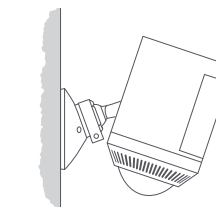
For optimal motion detection:

Mount the camera about 3 feet (1 meter) from the middle of the entry point, and about 10 feet (3 meters) above the ground.



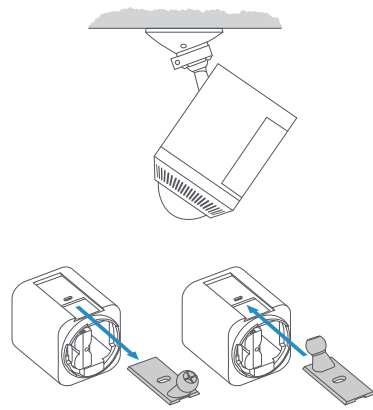
If installing on a wall...

Your camera comes ready to mount, with the ball joint pointing down. No adjustments are needed before installation.



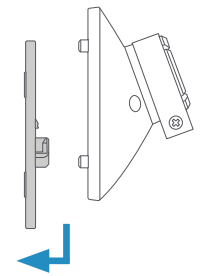
If installing on an eave or overhang...

Remove the battery compartment cover by twisting it counterclockwise and insert the ball joint plate with the ball joint pointing up.



Remove the mounting plate.

Slide it down to remove it from the camera mount.



Install the mounting plate.

For wall installation, the **UP** arrow should point up. For an eave or overhang, the arrow should point toward the area you want to monitor for motion.

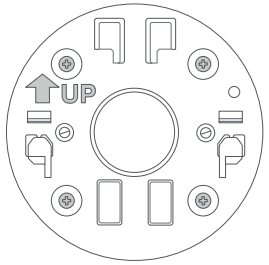
If installing on a wood surface, screw the plate directly into the wall.

If installing on a masonry surface, mark four screw holes using the plate as a guide.

Drill pilot holes using a 1/4" drill bit. Insert the included wall anchors, then drive the four mounting screws through the mounting plate into the wall anchors.

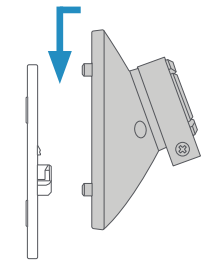
WARNING!
Only use the included mounting screws when securing the mounting plate.

CAUTION!
DO NOT drill into your home's electrical wiring.

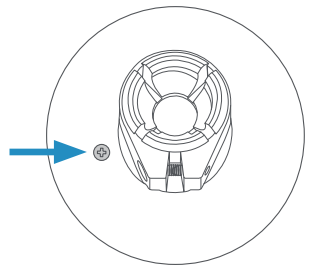


Attach the camera mount.

Slide it onto the mounting plate.



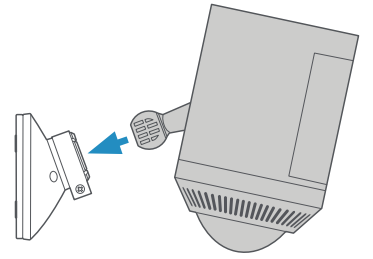
Then, tighten the security screw.



Attach your camera to the camera mount.

Loosen the metal collar on the bracket using a Phillips-head screwdriver (not included).

Push the ball joint into the socket until it snaps into place.

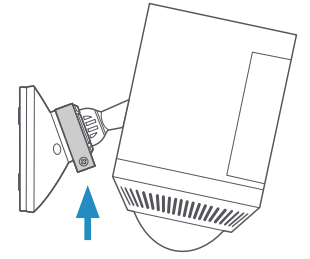


Adjust the camera angle.

Rotate the camera to focus on the area of your choice. Look at Live View in the Ring app to make sure it's positioned at your desired angle.

Tighten the security screw.

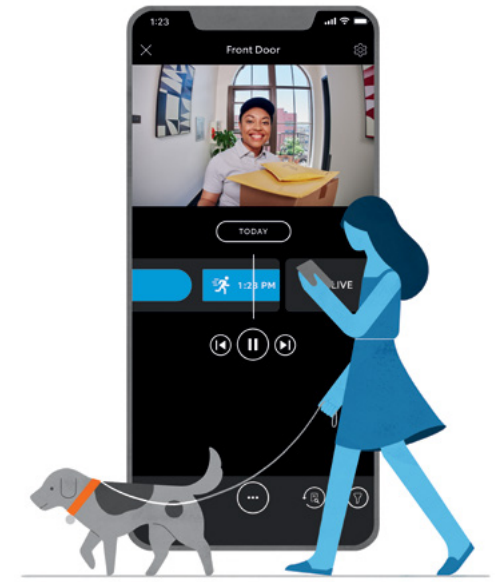
Then, tighten the screw on the metal collar to secure the camera position.



Free Ring Protect Plan for 30 days.

Your new device comes with a free, 30-day trial of **Ring Protect**. This comprehensive subscription service lets you review, save, and share your video and photo history anytime so you never miss a moment.*

To continue using Ring Protect after your free trial ends, visit ring.com/protect-plans to compare plans and pricing.



*Your free trial isn't applicable for locations with an existing Ring Protect subscription. See ring.com/protect-plans to learn more about your plan's retention period.



For additional help, visit ring.com/help
Or give us a call

[US 1 800 656 1918](https://ring.com/help)

[Canada 1 855 300 7289](https://ring.com/help)

[Worldwide +1 310 929 7085](https://ring.com/help)

For a list of all our customer support numbers, visit ring.com/callus

For information on our warranty, theft protection, and Ring Protect Plans, visit ring.com/legal

© 2022 Ring LLC or its affiliates. Ring and all related marks are trademarks of Ring LLC or its affiliates.

