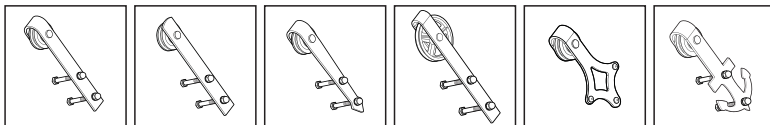


Product Installation Instructions Guide

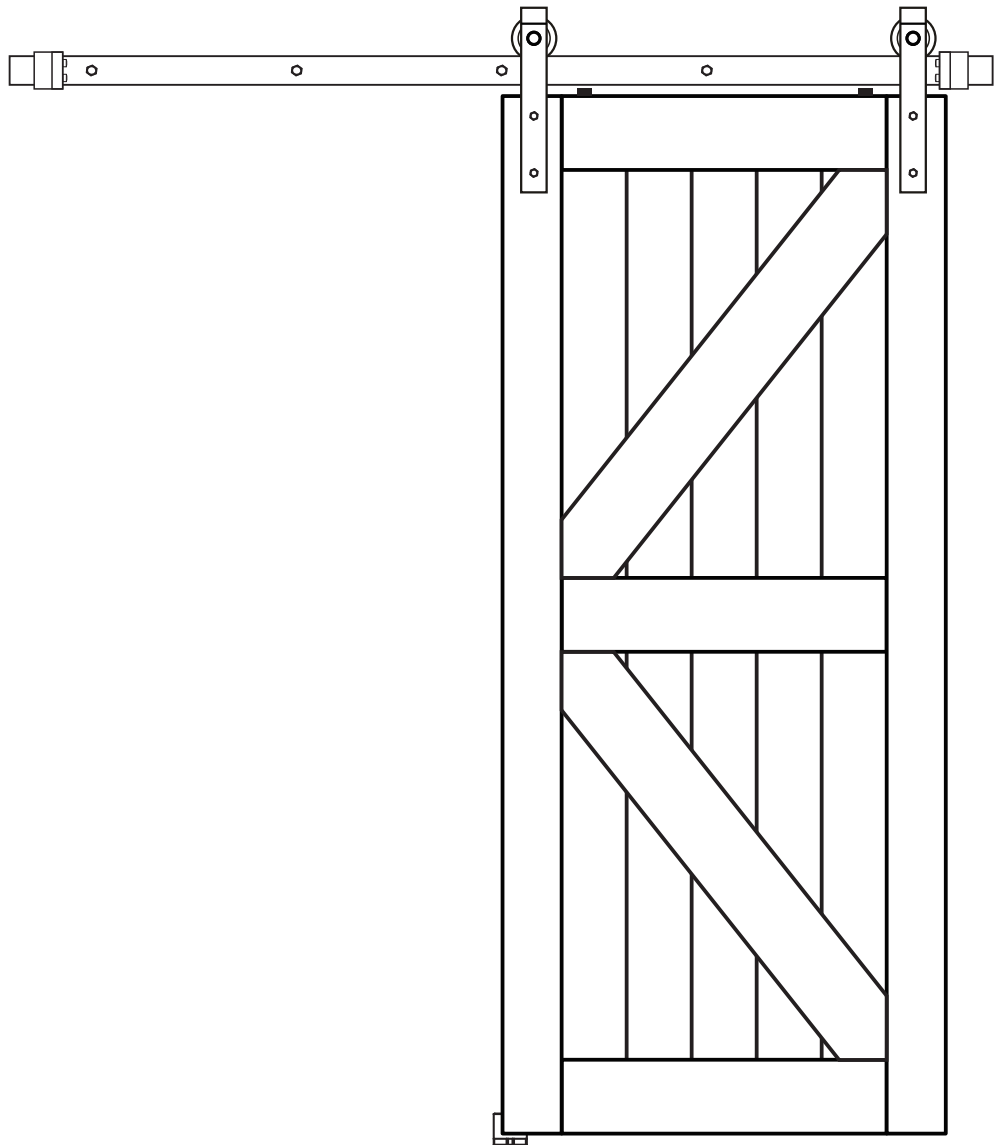
Barn door hardware



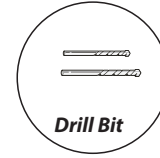
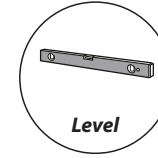
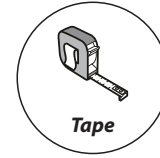
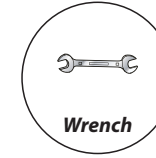
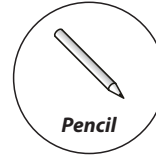
OPERATION CAUTIONS:

Please read this installation guide carefully before installation.

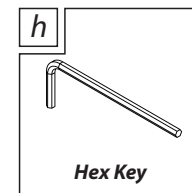
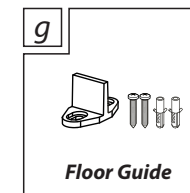
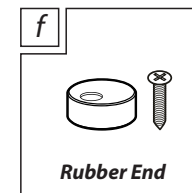
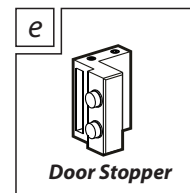
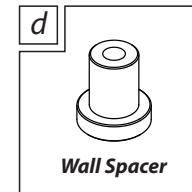
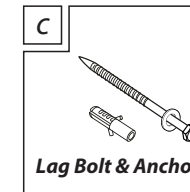
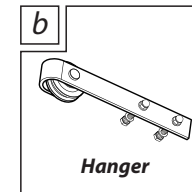
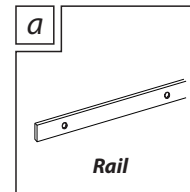
Please refer to the relevant content of this store for more product use.



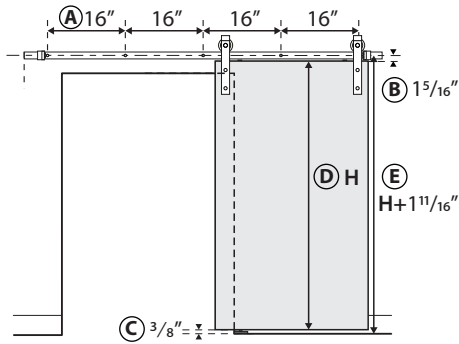
Tools Needed



Product Content

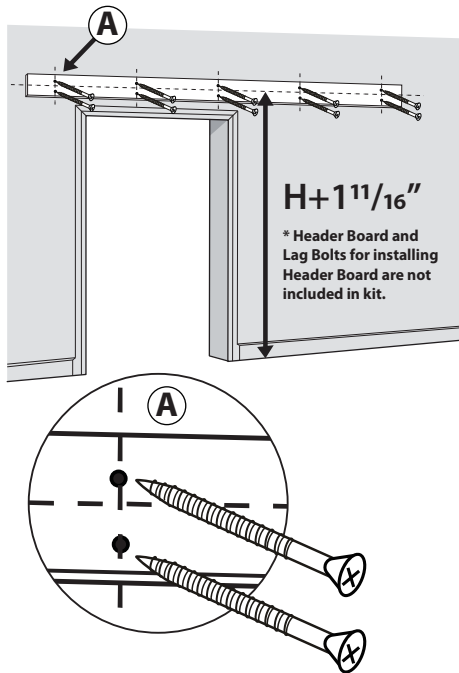


Measurements



- A** The gap between each pre-drilled hole is 16".
- B** Distance from door top side to holes on the wall is $1\frac{5}{16}$ ".
- C** Distance from the bottom of the door to the floor is $\frac{3}{8}$ ".
- D** Door height is **H**.
- E** The height of holes on the wall is $H+1\frac{11}{16}$ ".

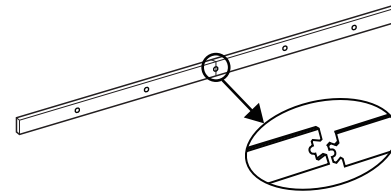
Instructions



It is very important to determine whether you will be installing a Header Board prior to installing the track. Due to many overlapping factors such as the location of wall studs (Our rail come with pre-drilled holes every 16" on center), the weight of a barn door and the various types of trim used in homes, we recommend using a Header Board in all situations. Please install a 1"x4" or 1"x6" Header Board above the door opening directly into studs. Header Board must be solid wood and measure at least the full length of the track or longer.

Step-1

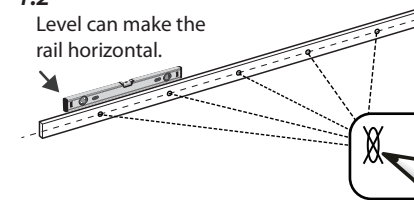
1.1



Connect two rails together (If the rail is one piece please skip this step).

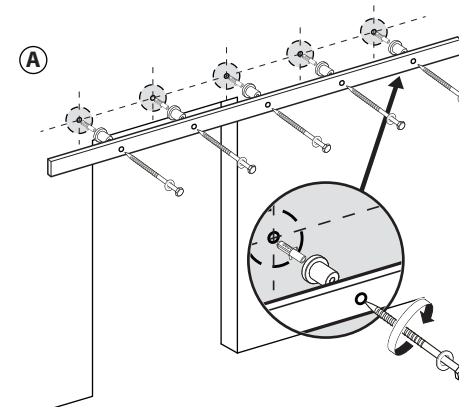
1.2

Level can make the rail horizontal.



Place the rail against the wall, and use a pencil to mark where the holes should be. Make sure the height of holes on the wall is $H+1\frac{11}{16}$ ".

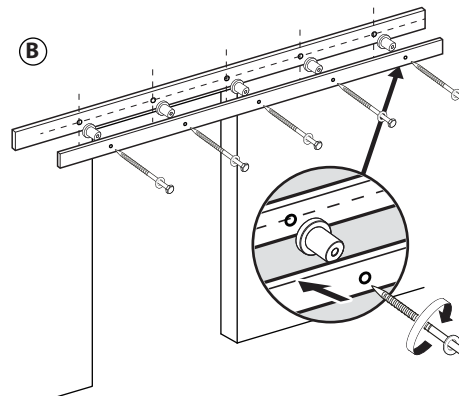
Step-2



We provide 2 kinds of screws for you to install rail onto concrete wall or drywall.

A Concrete wall Installation.

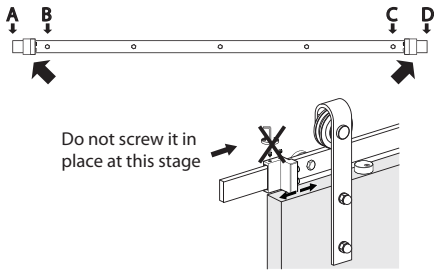
Install the anchor to holes on the concrete wall first, then install lag bolt to anchor.



B Drywall Installation.

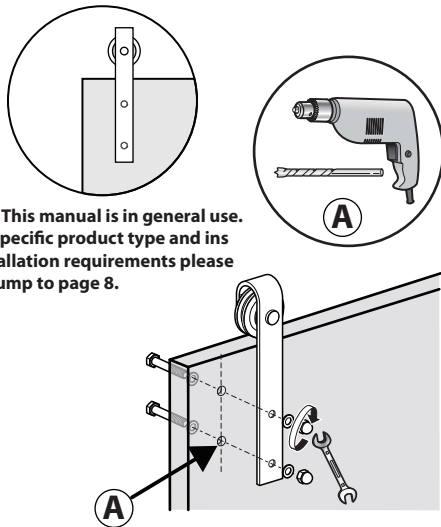
Install the lag bolt to wood stud or head board directly.

Step-3



Insert door stoppers into rail. Install door stoppers between A-B and C-D. Door stopper is used to prevent the hangers coming out of the rail.

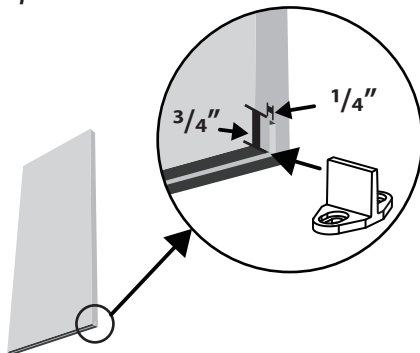
Step-4



Install the hangers onto the door according to the measurement in the pictures below. Maximum door thickness is 1³/₄". If your door's thickness is less than 1³/₄", please add some bolt washers or cut the long door bolts to a suitable length to fit the door.

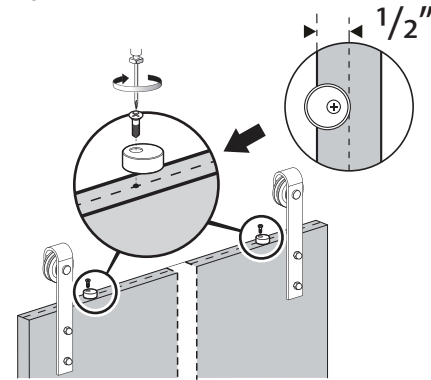
This manual is in general use. Specific product type and installation requirements please jump to page 8.

Step-5



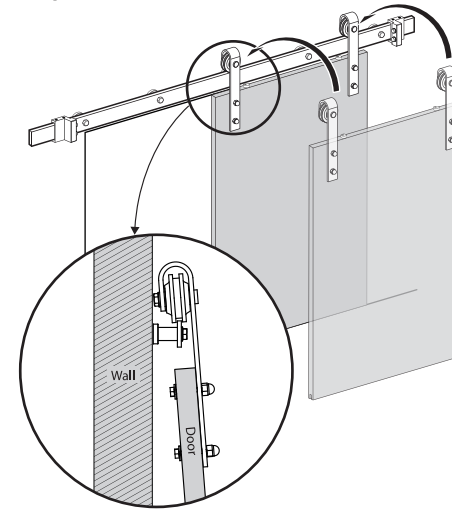
Use router or circular saw to create a kerf at bottom of the door, along the center to allow the tip of the T-shaped floor guide to fit in between, to keep your door stable and prevent the door bottom swinging back and forth when you slide it open and closed.

Step-6



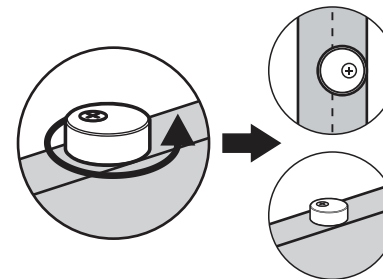
The rubber ends are used to protect the door from touching the rail when sliding the door. You need to drill holes on the door top side, please drill the holes 1/2" away from the edge of the door. Then install the rubber ends on the door.

Step-7



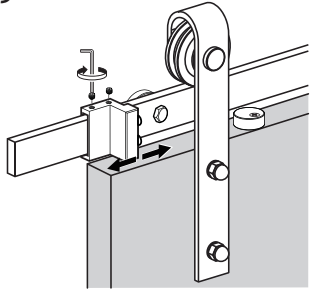
Hang the door over the rail.

Step-8



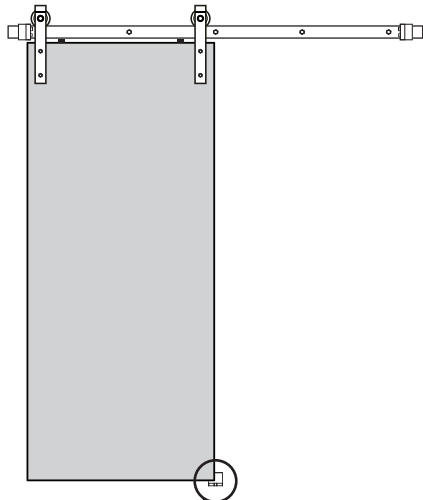
Turn the rubber ends approximately 180 degrees so that they are stuck between the door and the rail.

Step-9

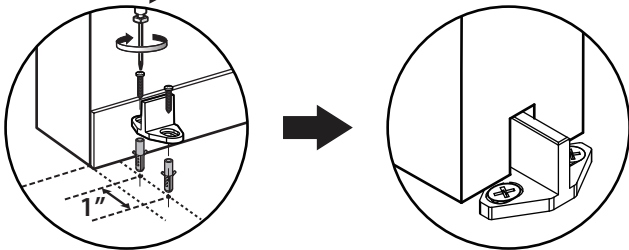


Adjust the 2 door stoppers to find a suitable position, Use the hex key to screw the door stoppers in place.

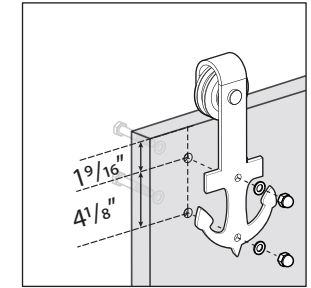
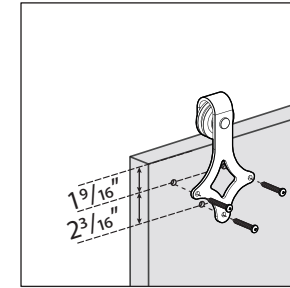
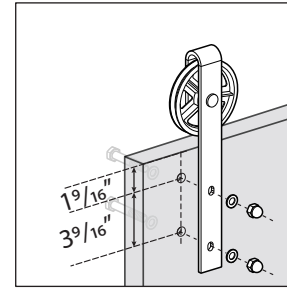
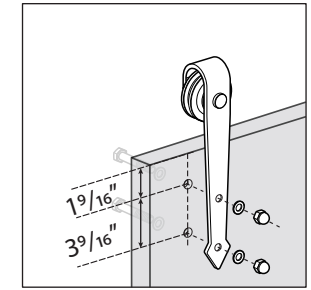
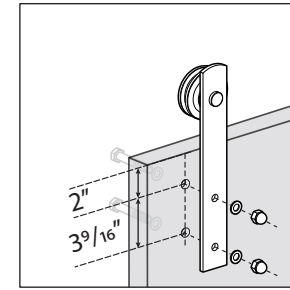
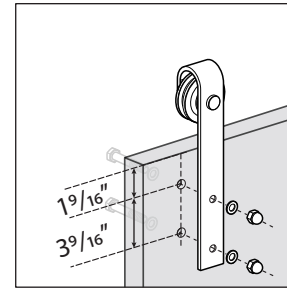
Step-10



Install the floor guide. Put floor guide on the floor first to fix a suitable position and make a mark so that the tip of the floor guide can work well in the slot. Use drill bit to drill holes on the floor where the mark is, and then install the floor guide.




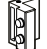

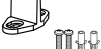


Installation Schematic

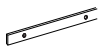


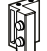




Product Details

Single door hardware kit includes

Picture						
Size / Part Name	Rail	Hanger	Wall Spacer and Lag Bolt	Door Stopper	Rubber End	Floor Guide
5.0FT	1	2	4	2	2	1
6.0FT	1 / 2	2	5	2	2	1
6.6FT	1 / 2	2	5	2	2	1
7.0FT	1 / 2	2	5	2	2	1
9.0FT	2	2	7	2	2	1
11FT	2	2	9	2	2	1
12FT	2	2	9	2	2	1
14FT	2	2	11	2	2	1

Duoble door hardware kit includes

Picture						
Size / Part Name	Rail	Hanger	Wall Spacer and Lag Bolt	Door Stopper	Rubber End	Floor Guide
5.0FT	1	4	4	4	4	2
6.0FT	1 / 2	4	5	4	4	2
6.6FT	1 / 2	4	5	4	4	2
7.0FT	1 / 2	4	5	4	4	2
9.0FT	2	4	7	4	4	2
11FT	2	4	9	4	4	2
12FT	2	4	9	4	4	2
14FT	2	4	11	4	4	2

* The number of tracks and accessories varies from model to model. Please refer to the actual receipt.

Track Sizes

