

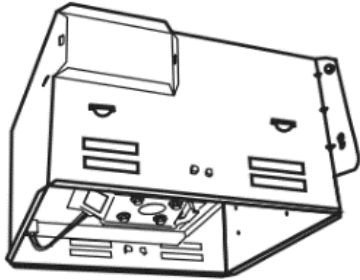


## Hushtone by Cyclone ENERGY STAR BATH FAN WITH HUMIDITY SENSOR & TIMER

### Bath Fan Installation- Tools & Materials Required

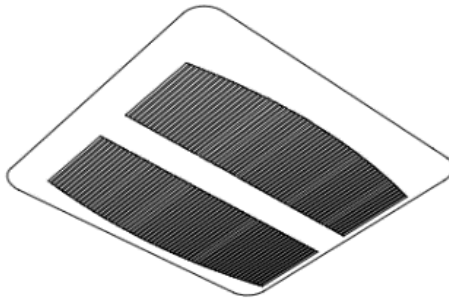
- \* Electrical Drill
- \* 1/2" Drill Bit for Drilling Pilot Holes into joist
- \* 1-1/4" Drill Bit for Drilling Electrical Wiring Access Hole Through Joists (If Applicable)
- \* #2 Phillips Screwdriver or Driver Bit
- \* Wire Stripper & Cutter
- \* Aluminum Foil Tape & or Duct Tape
- \* Electrical Supplies for Wiring  
i.e Marrettes (wirenuts), Electrical Tape & Cable Connectors

### Bath Fan Parts Supplied

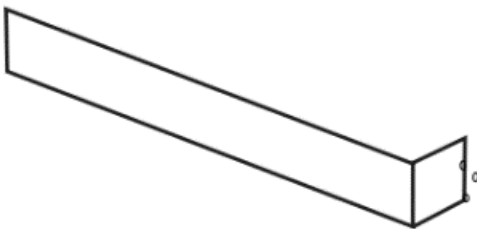


1x Fan

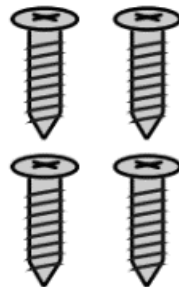
2x Knobs for Humidity Sensor & Timer



1x Plain Grille  
(Includes 2x Grille Springs)



4x Mounting Brackets



4x Flange Screws

## Bath Fan Pre- Installed Electrical Wiring

1x Black  
1x White  
1x Green



## Humidity Sensor & Timer Pre-Installed Electrical Wiring

1x Brown  
2x White  
1x Black



For ideal set up, 1 switch is required

Switch- Fan function

Humidity Sensor & Timer wired to a constant and independent power source for automatic operation

For more information, contact the manufacturer

Cyclone Range Hoods Inc.  
[www.CycloneRangeHoods.com](http://www.CycloneRangeHoods.com)  
[Info@CycloneRangeHoods.com](mailto:Info@CycloneRangeHoods.com)  
1-888-293-5662