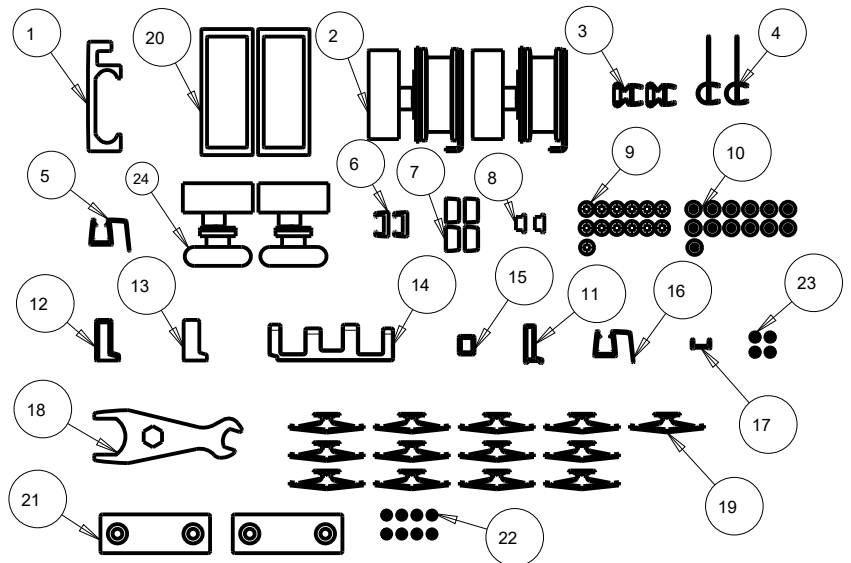
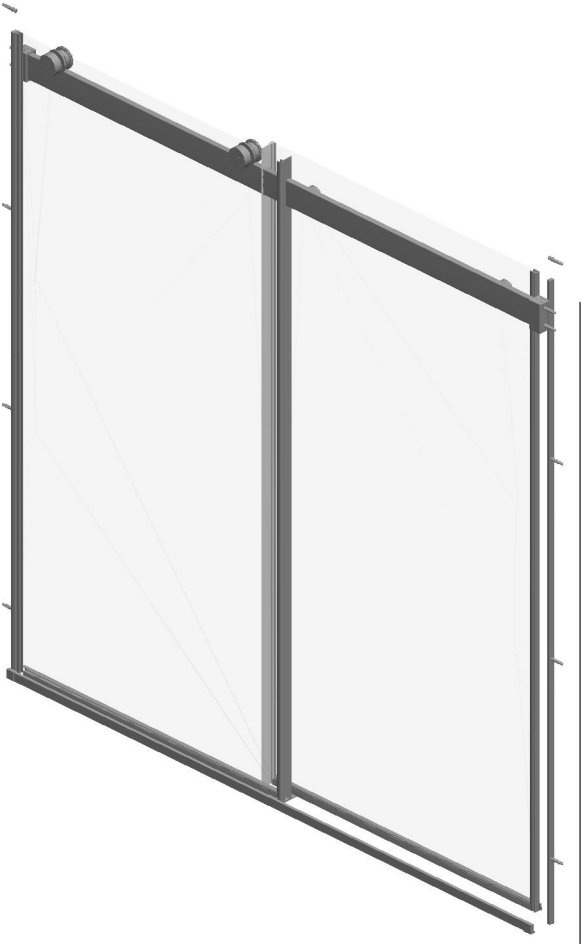


SHOWER DOOR

SLIDING C500 STYLE WITH 8 MM GLASS 60" TUB TRACK



ID	DESCRIPTION	QTY	MATERIAL
1	SLIDING RAIL	1	SS
2	ROLLER ASSEMBLY	4	ASSEMBLY
3	GLASS FRAME	2	AL6463
4	BUBBLE SEALER	2	PVC
5	RAILING, GLASS DOOR RIGHT	1	PVC
6	MOUNTING PROFILE	2	AL6463
7	MOUNTING PROFILE END CAP	4	PVC
8	MAGNETIC STRIP	2	PVC
9	M4X40 SCREW	13	SS
10	8 - 10 X 1" PLASTICE FLANGED ANCHOR	13	PVC
11	GUIDING BLOCK	1	PVC
12	END CAP, LEFT	1	ZAMACK_3
13	END CAP, RIGHT	1	ZAMACK_3
14	DOOR CENTER GUIDE BODY	1	SS
15	CENTER GUIDE BODY PART	1	SS
16	RAILING, GLASS DOOR LEFT	1	PVC
17	BT-222 TUB INSTALLATION TOOL	1	AL6061
18	WRENCH TOOL	1	1018_STEEL
19	TOGGLE WALL ANCHOR	13	POLYPROPYLENE
20	WALL BRACKET	2	SS
21	WALL BRACKET PART	2	SS
22	M5x.8 X 6 HEX SOCKET SET SCREW	8	STEEL
23	M5X.8X16 HEX SOCKET SET SCREW	4	SS
24	ROLLER ASSEMBLY	2	ASSEMBLY

MATERIALS: Anodized Aluminum Extrusions (Track) and Stainless Steel (Mounting Brackets).
Matte Black is Powder Coated.

INSTALLATION: Detailed Instructions, Templates and Hardware Included for Easy Installation.

UNIQUE FEATURES: Constructed of Corrosion Resistant Anodized Aluminum.
60" Track Assembly Kit.
Fits 60" Tub Doors with an Opening min/max of 55-3/8"-59-3/8" (140.6cm-150.7cm),
with a Height of 59" (149.9cm).

NOTE: Height of 61" (154.9cm) with a Minimum Sill Depth 2-7/8" (7.1cm) Required for Installation.

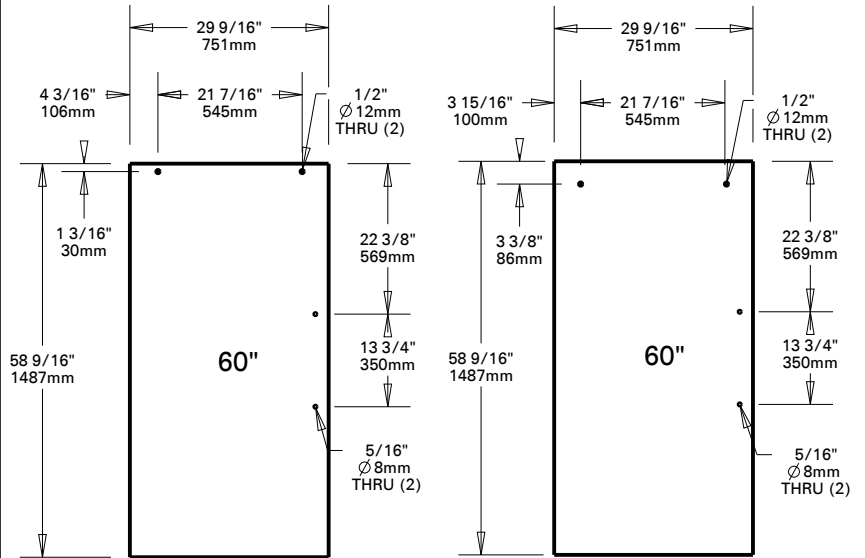
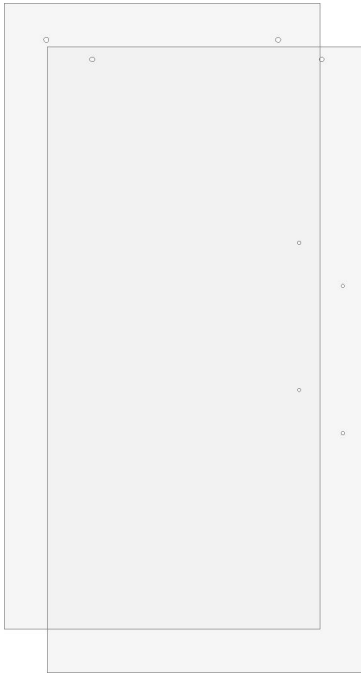
WARRANTY: 5 Year Limited Warranty.



see what Delta can do

SHOWER DOOR

5/16" (8mm) SLIDING SHOWER 60" TUB GLASS PANELS



MATERIALS: 5/16" (8mm) Tempered Glass Panels.

UNIQUE FEATURES: Spot Guard Easy Clean Coating on Both Sides.

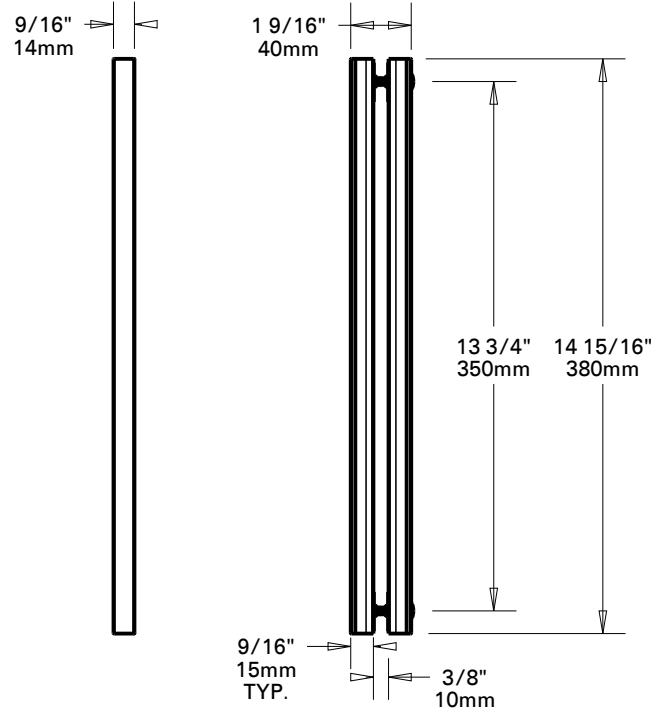
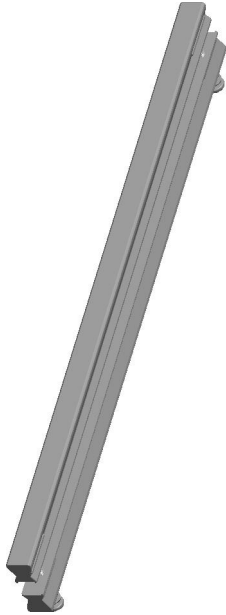
WARRANTY: 5 Year Limited Warranty.



see what Delta can do

SHOWER DOOR

VERTICAL HANDLE



MATERIALS: Zinc Posts for All, Stainless Steel Bars for Polished Chrome, Aluminum Bars for Brushed Nickel and Matte Black.

UNIQUE FEATURES: Coordinates with Delta[®] Faucets and Bath Hardware.

WARRANTY: 5 Year Limited Warranty.



see what Delta can do