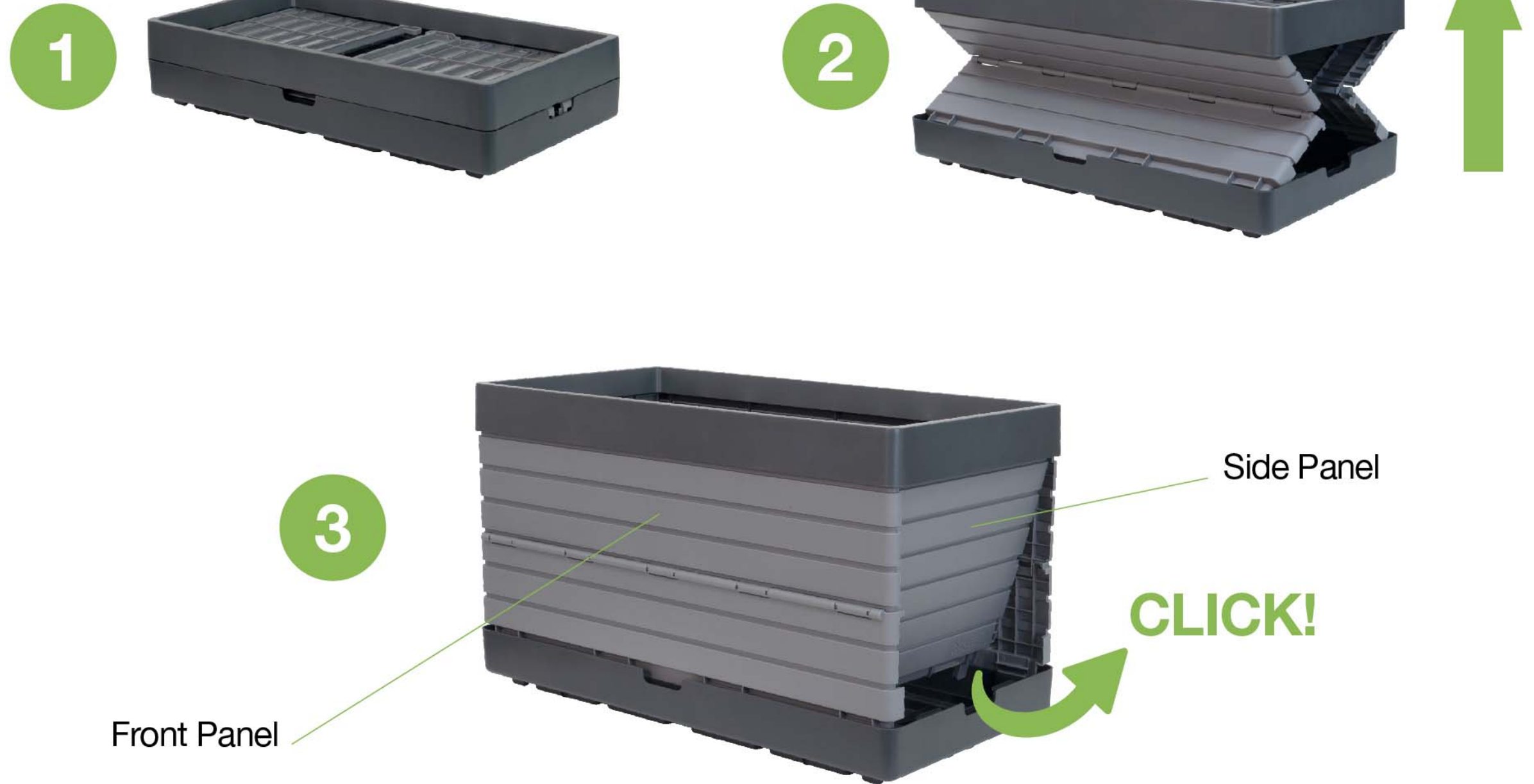


FLEXSPACE GARDEN

Assembly Tip



When assembling, make sure front panels are completely unfolded and side panels are well clipped to the base.

You will hear a **“CLICK”** when it’s done properly.

Always follow manufacturer’s instructions when assembling.

FLEXSPACE GARDEN

Installation Tip

Keep assembled garden unit on a flat surfaces.



Patio



Pavement



Deck



Porch

Never add more than 3 boxes to a fully assembled unit.

FLEXSPACE GARDEN

Planting Tip



Only add soil and plants to boxes
Holds up to 40 quarts of



Avoid using planter filler materials that will add extra weight or absorb moisture



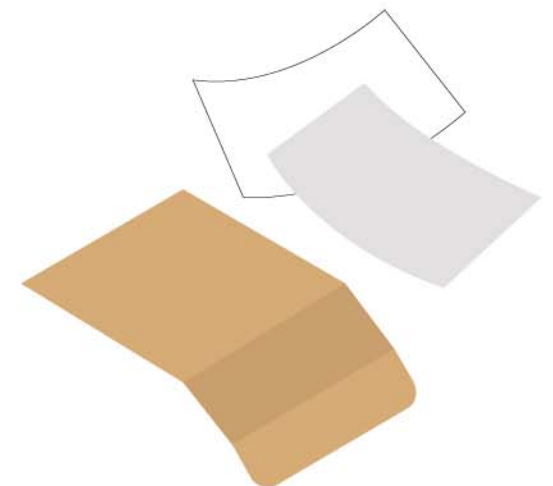
Gravel



Charcoal Pieces



Large Stones



Cardboard & Paper