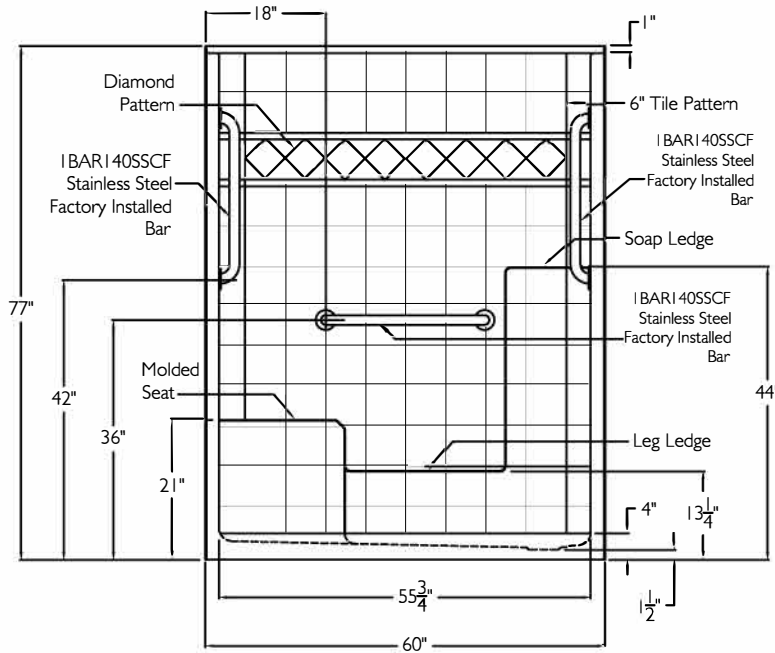
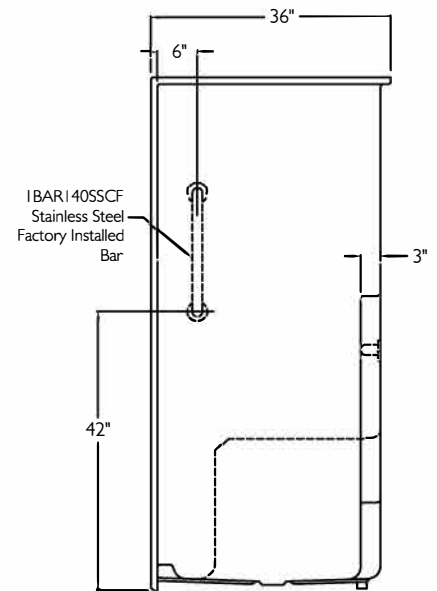


SUBMITTAL DATA

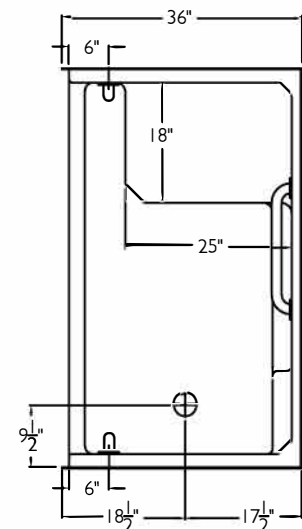
FRONT VIEW



SIDE VIEW



TOP VIEW



DUE TO THE NATURE OF THE MATERIALS
DIMENSIONS MAY VARY + - 1/2"

ella
by ella's bubbles
STANDARD

Accessible Shower Stall

The shower enclosure shall be Model ESM 6036 SHL WHT-PKG I center drain.
Finished surface shall be of a sanitary-grade AcrylX™ applied acrylic.

The unit shall have outside dimensions of 60" x 33" x 77".
The unit shall meet UPC, CSA B45.5, and ANSI Z124.1-2.

The enclosure shall be equipped with the following installed accessories:

- 1) 6 inch tile finish on walls,
- 2) Diamond accent pattern,
- 3) Molded seat on the left,
- 4) Molded soap ledges on back wall,
- 5) Molded low ledge on back wall,
- 6) Finish color white,
- 7) 4.0" Threshold,
- 8) Retail Wrap #6 Shrinkwrap 12.

FIELD INSTALLED ACCESSORIES:

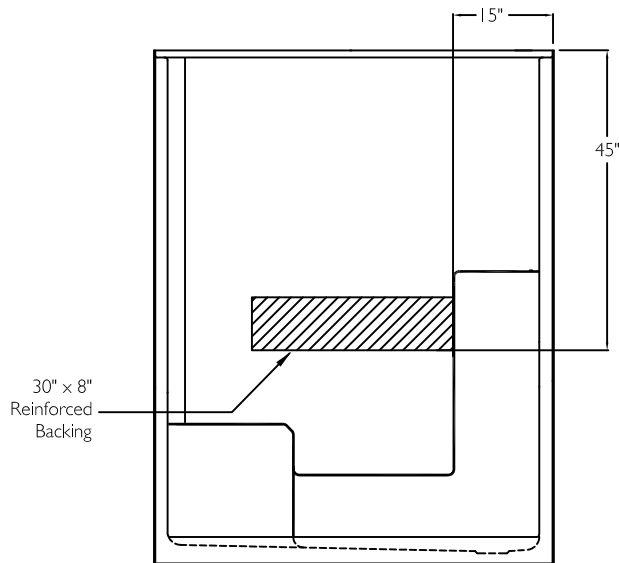
- 9) One IBar I 40SSCF stainless steel bar horizontal on the back wall,
- 10) Two IBar I 40SSCF stainless bars, one vertical factory installed on each side wall,
- 11) IDRA101 drain fitting.

Approved By Print Name:	Date Approved:	Drawing #:	ESM 6036 SHL WHT-PKG I
Approved By Signature:	Wholesaler:	Date:	8-24-16
Job Name:	Rep:	Revised:	11-15-23
		Quote No:	

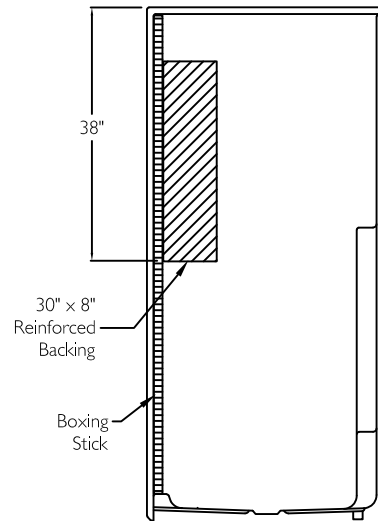
Backing Placement Drawing

SUBMITTAL DATA

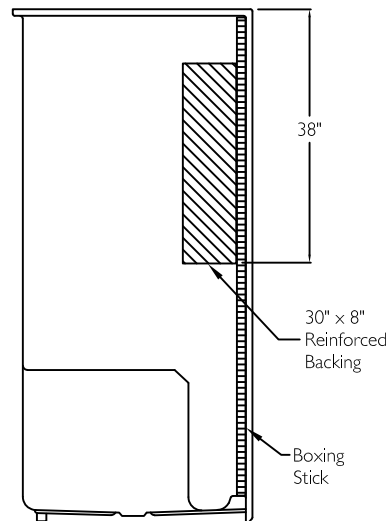
FRONT VIEW



SIDE VIEW



SEAT SIDE VIEW



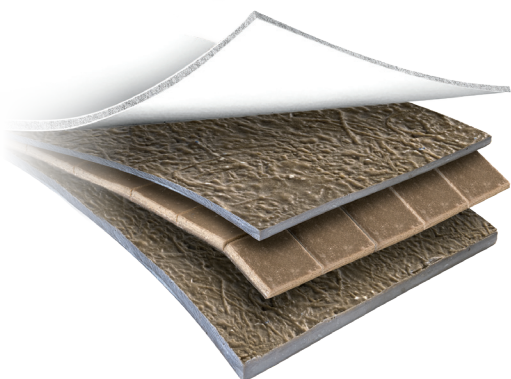
DUE TO THE NATURE OF THE MATERIALS
DIMENSIONS MAY VARY + - 1/2"

ella
by ella's bubbles

Approved By Print Name:	Date Approved:	Drawing #:	ESM 6036 SHL WHT-PKG1
Approved By Signature:	Wholesaler:	Date: 8-24-16	Revised: 11-15-23
Job Name:	Rep:	Quote No:	

COMMERCIAL PRODUCTS DEMAND MORE.

ARMORCORE™ DELIVERS IT.



STRONG TO THE CORE

ArmorCore reinforcement technology is a proprietary resin-based blend formed into sheets on a pliable screen. Layered between coats of resin and glass during the manufacturing process, ArmorCore strengthens the product's most critical areas, producing one of the most impact-resistant structures on any jobsite!

- Provides confidence and peace of mind on the jobsite.
- As effective as traditional wood backing






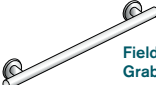


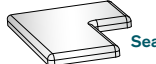


Chemically Bonded

ArmorCore™'s resin-based formulation chemically bonds to layers of fiberglass lamination, forming a rock solid backing for factory-installed grab bars and for future installation of grab bars.

- Eliminates separation
- Impervious to moisture and freezing
- Not susceptible to water damage from outside storage.

...But don't take our word for it.

ArmorCore reinforcement has been tested for structural strength on grab bars and seats using CSA B45.5-11/IAPMO Z124-2017 standards, and has been proven to meet and exceed code requirements.

Item Tested	Load Standard	Result
 Factory Installed Grab Bars	 292 lb 292 lb Grab Bars	 PASSED
 Field Installed Grab Bars	 292 lb 292 lb Grab Bars	 PASSED
 Seat	 300 lb 300 lb Seat	 PASSED

The reinforcement made of ArmorCore offered on commercial units from the American Bath Group family of brands meets and exceeds the 292 lbf (foot pound) load requirement for grab bars and 300 lbf load requirement for seats, per CSA B45.5-11/IAPMO Z124-2017, provided that:

- The grab bar and/or seat itself meets the requirements of CSA B45.5-11/IAPMO Z124.2017
- The grab bar and/or seat is installed as per the manufacturer's instructions

Applicable to both factory-installed grab bars and grab bars intended for future installation.