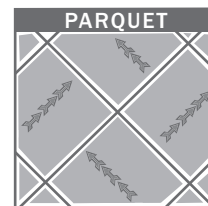
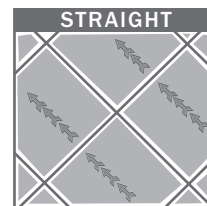
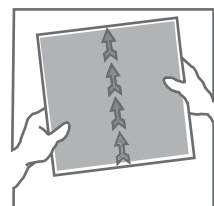


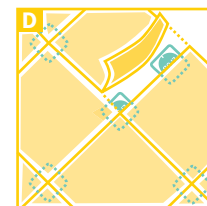
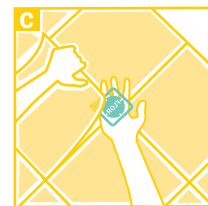
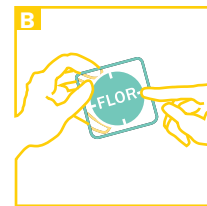
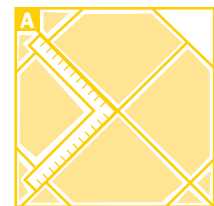
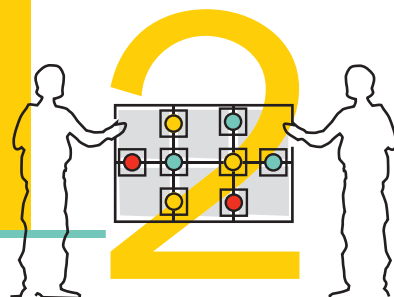
# AREA RUG

# SPECIAL NOTES AND CAUTIONS



**You have the freedom to do what you want - that's the fun part.** You have the freedom to lay out your design and change it around until you find the look you want.

Pick up a tile. Flip it over. Look at the arrows on the back. We put them there to help make sure all of your tiles face the direction you choose. Many FLOR styles can be installed multiple ways. For straight installation, all arrows (*back of tile*) should point in the same direction. Parquet style looks like a basketweave when every other tile is turned 90 degrees. Feel free to create a style of your own or use one of ours. Personalize it. The freedom to choose is yours, and it is so easy.



**Freedom to move - this is the part that makes you smile.** When you have decided on the design you want, use your FLORdots to attach the tiles together. It's easy! A carpenter's square helps to make sure your rows are squared before sticking the tiles together (A). The FLORdots have tic marks to help you align the four corners or the two edges of your tiles to make a perfect fit (B). Lift the corner of one tile and slide the FLORdot under it, sticky side up (C), and then adhere the corners of the three remaining tiles. For borders, place additional FLORdot as shown (D). FLORdots were invented to get stickier for a better hold after installation. Low initial adhesion makes it easy. Stick. Change your mind. Move around your tiles. No problem. Let the tiles settle. The rug becomes stronger with time (*2 hours*). If necessary, carefully peel FLORdot from backing or simply cut. With FLORdots you can do so much more with your FLOR. You can leave the rug where it is or easily pick it up and move it to a different spot. It can go anywhere. No mess, no fuss...easy. **DO NOT USE OTHER ADHESIVES OR DOUBLE STICK TAPE.** All you need are the FLORdots!

**Cleaning is a breeze!** We recommend regular steam cleaning or dry powder treatment for general care. FLOR is manufactured using stain resistant material and fiber. However, spills should be treated as soon as possible.

When you notice a spill or stain, pick up the tile and rinse it under cold running tap water. Using your hand, gently rinse the stain out of your FLOR. Don't use a brush. Let as much water drain out of your FLOR as possible. Dab it dry using colorless absorbing paper. Make certain the tile is completely dry before replacing it. Never place FLOR on heating elements to dry! You may have to replace the FLORdot in order to adhere the tile back into the rug. Don't worry. You can always order extra FLORdots.

If the above procedure doesn't remove the stain, consider the purchase of the FLOR Cleaning Kit. Order yours at FLOR.com or call **866.433.3567**. If the stain is not removable, just replace the tile. Simple.

**1** These instructions are for a "do-it-yourself" purchaser who is installing FLOR for residential use in his/her home or apartment. If you plan to install FLOR somewhere other than your home or apartment, you should contact FLOR's Customer Care Representatives toll free at **866.433.3567** to obtain installation instructions and warranty information for other applications.

**2** FLOR tiles can be installed over common residential sub-floors such as plywood and concrete with the following constraints:

- Plywood should be smooth, flush, dry, level, securely attached and clean.

- Concrete should be fully cured, as well as smooth, dry, level and clean. Under normal conditions concrete usually takes at least 90 days to cure after it's poured, provided atmospheric conditions are dry during the curing phase. Large cracks (greater than 1/16 inch

differential) should be leveled then patched with patching compound. ALL concrete must be sealed with a water based concrete sealer per the manufacturer's instructions. Failure to properly seal a concrete floor prior to installation can cause the backing of FLOR to react with the floor, which can result in indoor air quality issues, and/or adherence problems of FLOR's backing to the floor.

**3** FLOR cannot be installed over carpeted floors or carpet padding.

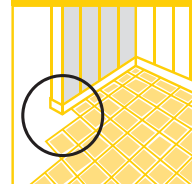
**4** FLOR should not be installed in areas that are subject to being wet or damp, or over surfaces where moisture could accumulate. Such conditions must be corrected before installing FLOR. Failure to do so could result in mold and mildew growth and deterioration of indoor air quality. Please call FLOR's Customer Care Representatives if you have any questions regarding the appropriate level of moisture for FLOR.

**5** If your room has an unfinished, waxed wood floor or a floor with vintage varnish, we do not recommend installing FLOR, as FLOR may cause some discoloration or staining of the floor.

**6** Over time, sunlight could cause discoloration of your exposed floor. The floor directly under your FLOR rug will remain protected from the sun's fading.

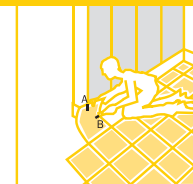
**7** Certain FLOR products are not intended for installation over a radiant heat floor and, if those products are installed over such a heat source, they may cause some discoloration or staining of the floor and/or their backing may adhere to the floor. If your room has a radiant heat floor, please call our FLOR Customer Care Representatives at **866.433.3567** prior to installation of FLOR to determine whether the FLOR product you have chosen is compatible with installation over a radiant heat floor.

## DOOR JAMBS WITH WALL-TO-WALL

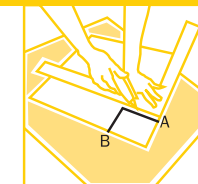


Don't panic.

FLOR is easy to cut, but make sure you are using sharp blades. It is better to undercut - you can always cut more off.



Align your FLOR tile and cut a notch in the tile's face where it aligns with the outside of your door jamb (point A). Now notch the face of your tile where it aligns with the baseboard (point B).



Flip your tile so the arrows face up and use your square to make two perpendicular cuts from the marks you made in the previous step. Cut away the corner scrap.



Make two cuts along doorstop of jamb and trim away waste.



Adhere tiles together with the FLORdots.

*Always pick up large scrappings or shavings before vacuuming. Full FLOR tiles should be kept in the original boxes. Please recycle all discarded boxes.*



**Mission Zero:**  
our promise to eliminate any negative impact our company may have on the environment by the year 2020.



Printed on 100% post-consumer waste paper

FLOR

FLOR.COM

FLOR

# FLOR®

INSTALLATION INSTRUCTIONS FOR  
FLOR AREA RUGS AND WALL-TO-WALL

SAY HELLO TO MODULAR FREEDOM

SEE  
HOW  
EASY

FLOR<sup>®</sup>  
IS

WITH  
FLOR  
DOTS

## 1, 2, 3...FLOR!

It's time to have fun with your FLOR! So let's get started.

**1** You should remove both the tiles and your FLORdots™ from the box. You can put the FLORdots aside for now but you are going to need them soon. Please check to make sure you received the tiles you ordered. It is important to us that you are happy with your purchase. Unfortunately, we cannot accept the return of product that has already been installed.

Now, we know that your excitement and anticipation are brewing, but hang on. We recommend that all FLOR tiles be given time to adapt to room temperature before installing. However, while the tiles acclimate, there are some other preparatory things you can do.

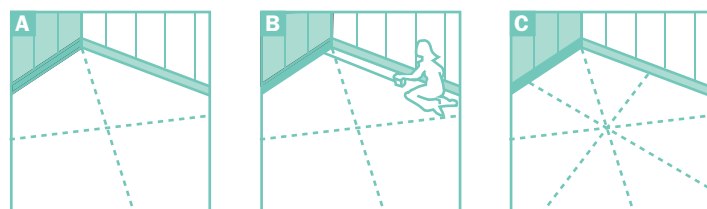
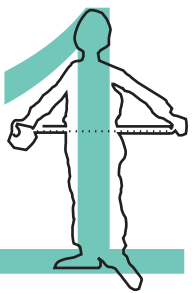
**2** You can check to make sure your existing floor is solid, smooth, level, dry, securely attached and clean. Vacuum or sweep. Then wipe up excess dust.

Your FLOR tiles can be installed over existing residential flooring (such as hardwoods, vinyl tile, sheet vinyl, or laminates) if such existing floor is solid, smooth, dry, level, securely attached, clean and free of wax. There are a few exceptions, however, so please see the "Special Notes and Cautions" section.

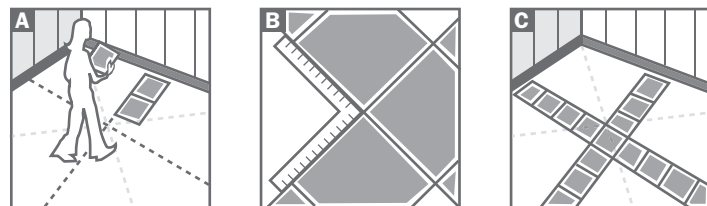
**3** Although installing FLOR wall-to-wall is really simple, we recommend you use a few tools to make your FLOR experience easier and your finished product more precise. To cut the tile, we like to use the Stanley carpet knife #10-525 (be sure to use sharp blades). A 24-inch carpenter's square or FLOR straight edge can help, as can a tape measure and a chalk line to align your tiles. Go to FLOR.com for accessories. Please be sure to follow tool manufacturers' directions and safety instructions.

We are finally on our way. FLOR it!

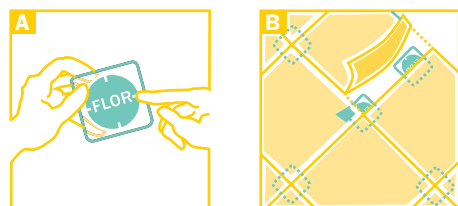
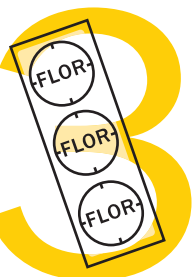
FLOR.COM



**Measure it.** You should start by aligning chalk lines from opposite corners of the main section of your room. Snap! You have located the room's center (A). Then use your tape measure to find the center of each wall (B). Using those points, set up and snap the chalk lines again (C). You should now have two additional lines creating a cross in the center of the room. You will use these lines to lay out your FLOR tiles.

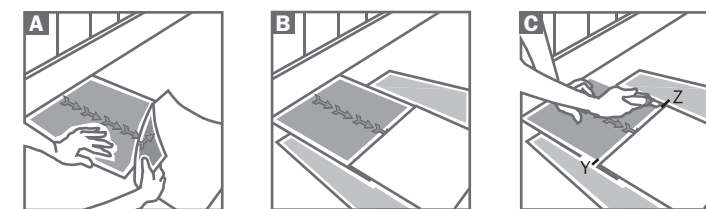
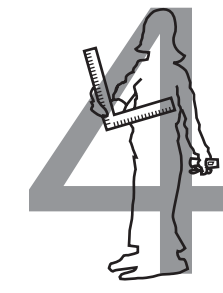


**Position it.** Here you get to be creative again. Lay one baseline row of FLOR tiles along each of the two lines you last snapped (A). Use the arrows on the backs of the tiles to design and align a pattern (straight or parquet) that best suits your space. Make sure the tiles fit snugly together (B). Now stand back and make sure the base lines are where you want them (C). (You may consider shifting the baseline rows to avoid having narrow strips of tile along the walls).



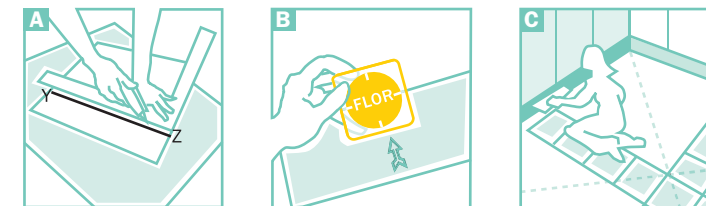
**Stick it.** Once you are satisfied with the placement of the baseline rows and before you worry about those unfinished edges, you need to adhere the baseline tiles into place with FLORdots. Make sure the tiles are snug and stick two tiles together per FLORdot.

## WALL-TO-WALL



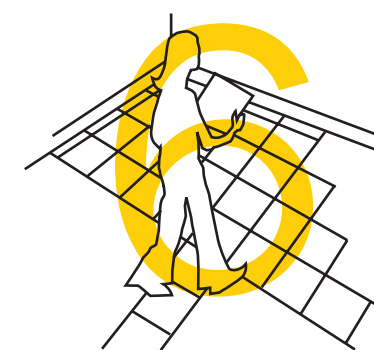
**Mark it.** Slip a FLOR tile face down (arrows up) under the last tile in the row (A). Make sure the tile is snug against the wall.

Look at the arrows on the tile's backside. Make sure they face the same direction as the tile next to it, to remain true to your desired FLOR pattern (B) (if your pattern is a parquet, the arrows on your tile should be turned 90 degrees to the tile next to it). Then, using the edge of this neighbor tile, make a notch at point Y and point Z of the tile to be cut (C).



**Cut it.** Next you are going to put some cardboard under the tile (arrows still facing up), and cut it between the two notches at point Y and point Z. We recommend you use a carpenter's square or FLOR straight edge and the Stanley #10-525 carpet knife (A). Go to FLOR.com for accessories. It will be easier if you make several light passes to cut through the material. Make sure you cut away from your body! Save the trimmings as you go. You may be able to use them somewhere else in the installation or for some other creative purpose.

Once the tile is cut, use a FLORdot to stick the end tile to the last full tile in the row (B). Repeat this at all four baseline row ends (C). You're almost done!



**Finish it.** Now you can begin to fill in each of the four quadrants that you've created, one at a time. As you fill in, feel free to adhere two or four tiles together with the FLORdots. Do whatever is easiest for you. To ensure a tight fit, periodically check the alignment of one tile to another. Work away from the room's center toward the corners. When you're all done, vacuum. Congratulations, you just FLOR'd it!

If you're still not sure you're up to installing FLOR, let's talk about it. Call our FLOR Customer Care Representatives toll free at 866.433.3567 or visit us at FLOR.com. We can talk you through the process. We'll also be happy to recommend local installers to do it for you.