



## Instruction Manual

Item#SE-282-2743



### Having Trouble?

Chat with us on your phone

Simply point your phone camera towards  
the QR code or see our website



**xbrand.us**

or email at

**customerservice@ecintel.com**

**Monday - Friday 7:00AM - 3:30PM PST**

### Floor Standing Waterfall



#### Purchased your product online?

We would really appreciate it if you can share your experience  
with others by reviewing our product on the website from  
which you purchased.



#### Have Questions or Issues? Need help with assembly?

Contact us and we will resolve immediately.

Simply point your phone camera towards the QR code or see our website

**Support Hours M-F 7:00AM - 3:30PM (U.S Pacific Time)**



Chat with us:  
**xbrand.us**



Email:  
**customerservice@ecintel.com**



Call:  
**951-319-4433**

### Limited 1-Year Manufacturer Warranty on xbrand.us

#### Manufacturer warranty covers:

- Parts that are deemed defective within 30 days will be shipped free of charge, within the 48 contiguous states.
- Any warranty claim after 30 days, will require shipping to be paid by the customer.

Any visible damage due to the neglect, misuse, or abuse will void the limited warranty of the product.

For further information, please contact us:

Chat with us: [xbrand.us](https://xbrand.us)



Simply point your phone camera towards the QR code or see our website

Email: [customerservice@ecintel.com](mailto:customerservice@ecintel.com)

#### Purchased your product online?

We would really appreciate it if you can share your experience with others by reviewing our product on the website from which you purchased.



Please use your smart phone camera to scan the QR code.  
Simply point your camera and let the camera scan the  
code below, and click on the link that opens up.



<https://xbrand.us/products/SE-282-2743>

<b>Contents .....</b>	<b>2</b>
<b>What is included .....</b>	<b>3</b>
<b>Assembly instructions .....</b>	<b>4</b>
<b>YouTube video instruction .....</b>	<b>5</b>
<b>Warranty .....</b>	<b>6</b>

## What is included



A. Main Fountain Front



B. Top Cover



C. Water Tank



D. Rocks



E. Screws



F. Cleaning Kit



I. Tank Cover with LEDs



G. Pump



H. Pump Sponge

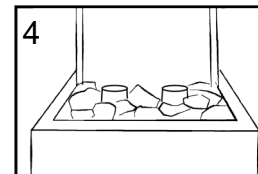
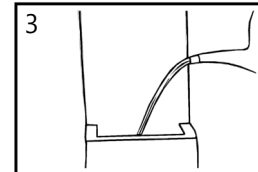
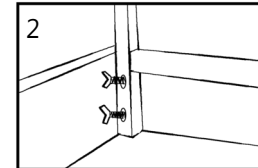
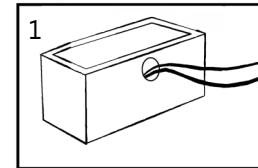


J. AC Adapter



K. LED Power Cord

## Assembly instructions



1. Connect the LED cord to the tray and feed it along with the pump power cord through the opening in the back of the water tank placing the pump on the sponge pad.
2. Place fountain body in the tank and secure with the screws. Place fountain cover on top of the fountain.
3. Connect the pump to the fountain body and fill with water until the pump is fully submerged.
4. Place tray on the water tank and add the rocks.



**Scan the QR code for detailed instructions**

<https://xbrand.us/products/SE-282-2743>