



Bluetooth® Device Pairing Quick Reference Guide

Before using your Bluetooth device to control your smoker, you must first pair your device following these instructions.

STEP 1

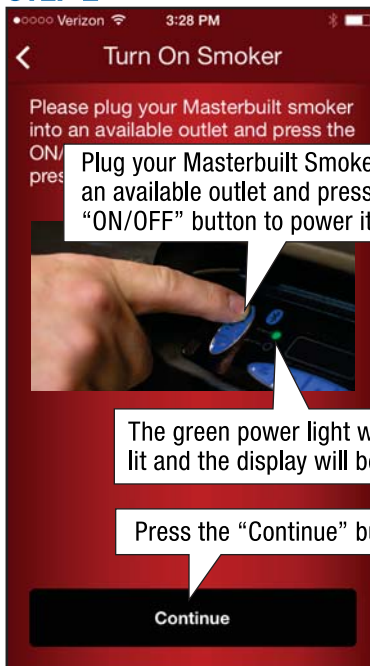


When the App is first opened the following screen will appear.

To start controlling your new Masterbuilt Smoker you must first pair your device with the smoker.

Press the "Add New Masterbuilt Smoker" button.

STEP 2

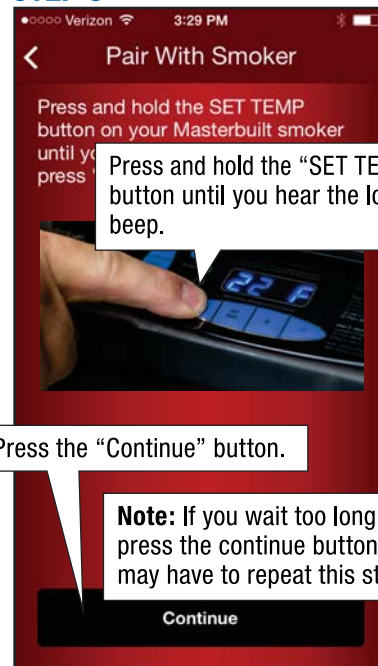


Plug your Masterbuilt Smoker into an available outlet and press the "ON/OFF" button to power it on.

The green power light will be lit and the display will be on.

Press the "Continue" button.

STEP 3



Press and hold the "SET TEMP" button until you hear the long beep.

Press the "Continue" button.

Note: If you wait too long to press the continue button you may have to repeat this step.

STEP 4

Wait for the device to pair with your new Masterbuilt smoker.

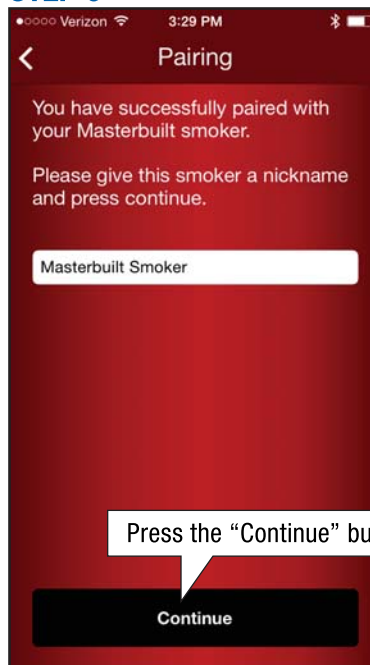
STEP 5



Once your device has successfully paired with the smoker you will need to give it a nickname.

Click in the box and give your smoker a nickname.

STEP 6



Press the "Continue" button.

STEP 7



Your device is now paired with your new Masterbuilt Smoker.

Click on your smoker in the list and enjoy.