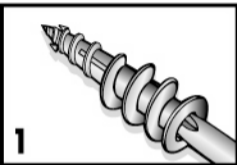
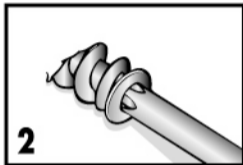


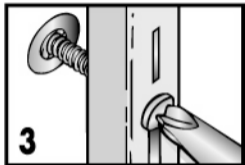
Stud Solver Installation



**Using #2 Phillips,
press tip of E-Z Anchor[®]
into drywall.**



**Press firmly and turn
clockwise until seated
flush. If resistance is felt
due to stud, increase
pressure and continue
turning.**



**Place fixture
(max. 3/4" thick)
over E-Z Anchor[®],
insert screw and fasten.**