

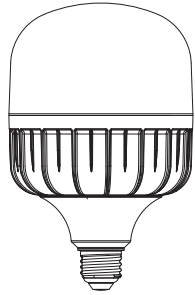
# 210\*290mm

**OREIN™**

Item # 314240034  
Model # A9T200WE26UL01  
Item # 314240108  
Model # A9T300WE26UL01

## USE AND CARE GUIDE

### LED HID RETROFIT LAMP



#### THANK YOU

Thank you for choosing Orein! We hope you will continue to choose Orein in the future. Visit us online at [www.orein-usa.com](http://www.orein-usa.com) to see our full line of lighting products.

## Warranty

The limited warranty set forth below is to the lighting product packaged with this limited warranty (the "Product"). Your Product, when delivered to you in new condition in its original packaging, is warranted against defects in materials or workmanship as follows: for a period of three (3) years from the date of original purchase, defective parts or a defective Product returned to Seller, or its authorized service providers, as applicable, and proven to be defective upon inspection, will be repaired, or exchanged for a new Product, as determined by Seller, or the authorized service provider.

This limited warranty covers all defects encountered in normal use of the Product, and does not apply in the following cases: Loss of or damage to the Product due to abuse, mishandling, alteration, accident, electrical current fluctuations, failure to follow operating, maintenance or environmental instructions prescribed by Seller in writing or services performed by someone other than Seller or its authorized service provider.

**WARRANTY IS VOID IF PRODUCT IS NOT USED FOR THE PURPOSE FOR WHICH THIS PRODUCT IS MANUFACTURED.**

Any complaints you may have regarding the product should be addressed to the Customer Service Team at [customerservice@leedardon.com](mailto:customerservice@leedardon.com) or visit [www.orein-usa.com](http://www.orein-usa.com).

**NO IMPLIED WARRANTY, INCLUDING ANY IMPLIED WARRANTY OF MERCHANTABILITY OR FITNESS FOR A PARTICULAR PURPOSE, APPLIES TO THE PRODUCT AFTER THE APPLICABLE PERIOD OF THE EXPRESS LIMITED WARRANTY STATED ABOVE, AND NO OTHER EXPRESS WARRANTY OR GUARANTY GIVEN BY ANY PERSON OR ENTITY WITH RESPECT TO THE PRODUCT SHALL BIND THE SELLER. (SOME STATES AND PROVINCES DO NOT ALLOW LIMITATIONS ON HOW LONG AN IMPLIED WARRANTY LASTS, SO THE ABOVE LIMITATION MAY NOT APPLY TO YOU.)**

## Safety Information

SUITABLE FOR USE IN ENCLOSED LUMINAIRES.

This device complies with Part 15 of the FCC Rules. Operation is subject to the following two conditions: (1) this device may not cause harmful interference, and (2) this device must accept any interference received, including interference that may cause undesired operation. This equipment, if not installed and used in accordance with the instructions, may cause harmful interference to radio communications. Any changes or modifications not expressly approved by the manufacturer could void the user's authority to operate the equipment. NOTE: This equipment has been tested and found to comply with the limits for a Class B digital device, pursuant to Part 15 of the FCC Rules. These limits are designed to provide reasonable protection against harmful interference in a residential installation. This equipment generates, uses and can radiate radio frequency energy and, if not installed and used in accordance with the instructions, may cause harmful interference to radio communications. However, there is no guarantee that interference will not occur in a particular installation. If this equipment does cause harmful interference to radio or television reception, which can be determined by turning the equipment off and on, the user is encouraged to try to correct the interference by one or more of the following measures: reorient or relocate the receiving antenna; increase the separation between the equipment and receiver; connect the equipment into an outlet on a circuit different from that to which the receiver is connected; consult the dealer or an experienced radio/TV technician for help.

## Safety Information(Continued)

### READ AND FOLLOW ALL SAFETY INSTRUCTIONS

1. This device is not intended for use with emergency exits.
2. This light is suitable for wet locations.
3. Do not make or alter any open holes in an enclosure of wiring or electrical components during kit installation.
4. The minimum temperature rating for this light is -4°F or -20 °C.
5. Not for use with light dimmer.

### SAVE THESE INSTRUCTIONS FOR FUTURE REFERENCE

**WARNING:** Before installation of any HID to LED model into existing HID fixture, check your electrical code. This code sets wiring standards for your area and should be studied carefully prior to installation.

**WARNING:** Please examine all parts that are not intended to be replaced by the retrofit kit for damage and replace any damaged parts prior to installation of the retrofit kit.

**WARNING:** Risk of Electric Shock. Disconnect power at the fuse or circuit breaker before installing or servicing LED Retrofit Kit installation requires knowledge of luminaire electrical systems. If not qualified, do not attempt this installation. Contact a qualified electrician.

**WARNING:** Risk of fire or electric shock. Install this kit only in luminaires that have the construction features and dimensions shown in the photographs and/or drawings and where the input rating of the retrofit kit does not exceed the input rating of the luminaire.

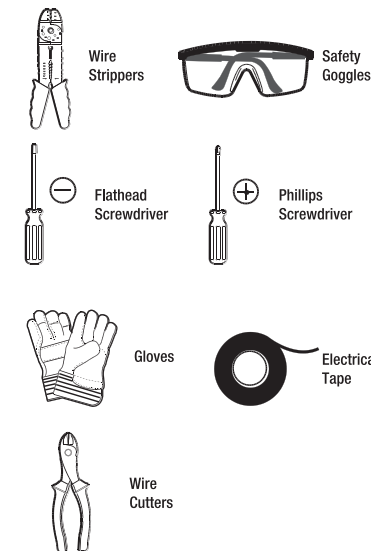
**WARNING:** To prevent wiring damage or abrasion, do not expose wiring to edges of sheet metal or other sharp objects.

**CAUTION:** Risk of electrical shock. Do not open. There are no user serviceable parts inside. Turn the power off before inspection, installation, or removal.

**CAUTION:** Use only on 120-277VAC, 60Hz circuits.

## Pre-Installation

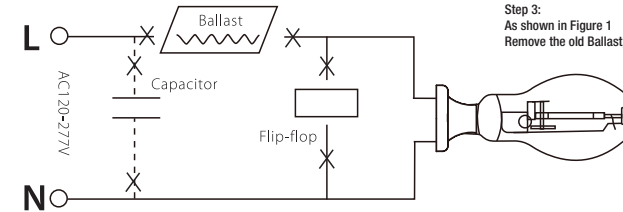
### TOOLS REQUIRED



1. When installing LED HID retrofit lamps within HID fixtures, ballast must be bypassed when present.
2. Installing surge/lightning protectors is recommended and helps to eliminate premature driver failure caused by surges.

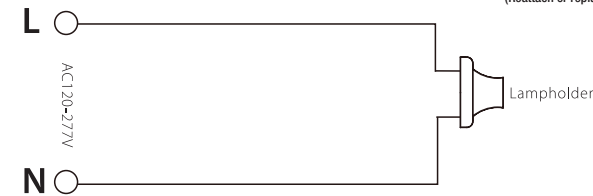
## Installation

### Fig 1



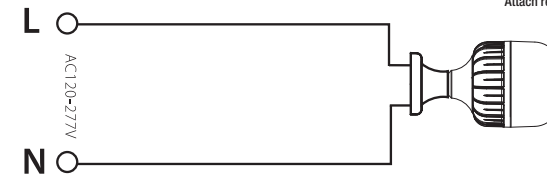
- Step 1:  
Disconnect electrical power to fixture.  
Turn off the circuit breaker and AC switch before working on fixture.
- Step 2:  
Ensure the fixture is not an emergency battery back up supplied fixture. If it is, disconnect the battery.
- Step 3:  
As shown in Figure 1  
Remove the old Ballast, Capacitor and Ignitor (if existing).

### Fig 2



- Step 4:  
As shown in Figure 2  
Make sure the Alternating Current Wires connect to the socket directly. (Reattach or replace ground lead if one needed.)

### Fig 3



- Step 5:  
As shown in Figure 3  
Screw the LED lamp into the corresponding socket.  
Attach retrofit label to luminaire.

## Specifications

Input Volts (Vac)	Input Frequency (Hz)	Input Wattage (W)	Light Output (LM)	Base
120-277V	60	26.5	3450	E26 (Medium)
120-277V	60	36	4600	E26 (Medium)

**OREIN™**

FCC compliance information is listed as below:  
Responsible party: Leedardon America, Inc.  
Responsible party address: 300 Technology Court SE Suite 100, Smyrna, GA 30082  
Telephone number: (678) 293-8382