

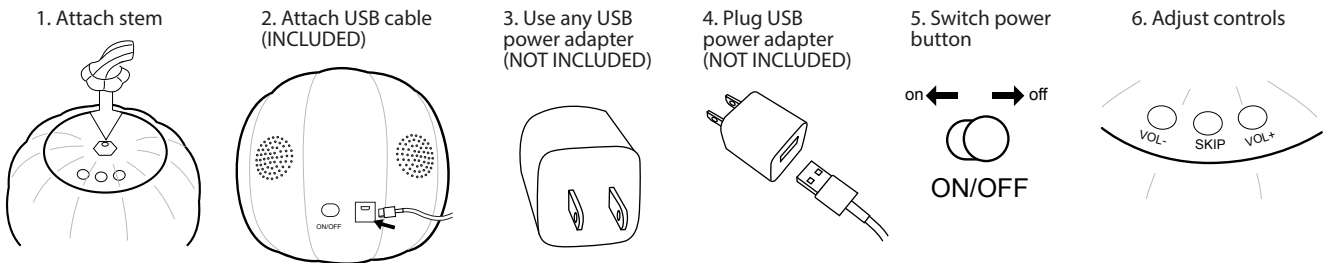
# Jabberin JACK

ANIMAT3D

**IMPORTANT:** JABBERIN JACK MAKES SILENT FACES, WHEN THERE IS NO AUDIO PLEASE NOTE THAT THE UNIT IS NOT BROKEN.

1. Power adapter not included, all USB power adapters are compatible (ie: mobile phone charger).
2. Please do not open Jabberin Jack in order to avoid damaging the unit.
3. Maintain adequate ventilation, do not cover the Jabberin Jack with objects such as cloth or other materials.
4. Please keep Jabberin Jack away from direct rain, water or snow, covered porch outdoor setting is OK.
5. Please disconnect/remove power source (USB cable) when not using for extended periods of time.
6. Please do not disconnect the USB cable when Jabberin Jack is ON. Switch OFF and then disconnect the USB cable.
7. Do NOT drop or shake the unit.
8. Please ensure that Jabberin Jack is placed in temperatures within 20°F - 100°F

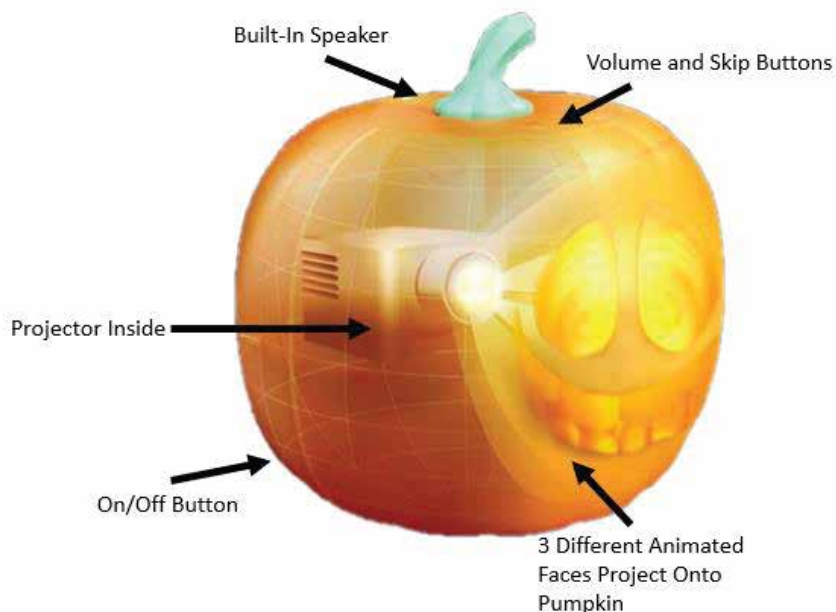
## Setup:



## Still Mode:

Give Jabberin Jack a decorative look by entering into still mode. Jack will not run any animation but instead will maintain a still face. Press and hold the + & - buttons simultaneously for 3 seconds to enter into still mode. To exit press any button to resume animations.

**\*Note:** 70 minutes of video will continue on a loop until turned off manually, there is no timer on Jabberin Jack.



**MINDSCOPE**  
PRODUCTS

PO BOX 9525  
GLENDALE, CA 91226

### Connect with us:



[pinterest.com/mindscope](https://pinterest.com/mindscope)



[youtube.com/mindscope](https://youtube.com/mindscope)



[facebook.com/mindscopeproducts](https://facebook.com/mindscopeproducts)



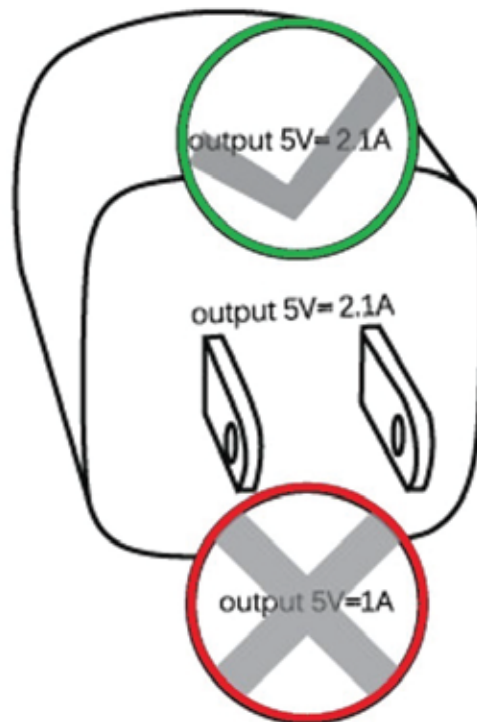
[instagram.com/mindscopeproducts](https://instagram.com/mindscopeproducts)



ANIMAT3D

## READ BEFORE USE

IF UNIT DOES NOT WORK  
USING STANDARD  
ADAPTER PLEASE USE 2A  
(AMP) ADAPTER.



PLEASE EMAIL  
[QA@MINDSCOPEPRODUCTS.COM](mailto:QA@MINDSCOPEPRODUCTS.COM)  
WITH ANY QUESTIONS