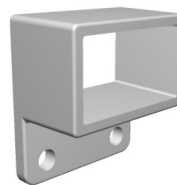


## EZ TOP & BOTTOM POST MOUNT SPECIFICATION SHEET

Alloy	Aluminum 356 T6
Weight	.90 lbs. (2 top & 2 bottom)
Structural	Yes
Length	1-3/8 in.
Width	3.0 in.
Height	3-1/4 in.
Colors	White and Dark Bronze
Finish type	Powder coat
Warranty	10 year finish warranty
Residential	Yes
Commercial	Yes



Perimeter	11.75 in
Weight Each	.25
Thickness	3/16 in.



Perimeter	9.1 in
Weight Each	.20
Thickness	3/16 in.