

| SAFETY ELIMINATES | |
|---------------------------|---|
| Vehicle couldn't move | 1. Check whether the power switch is off |
| | 2. Check whether the forward/backward switch is in the neutral gear (in the middle) |
| | 3. Check the fuse is damaged / is so, change it |
| | 4. Check whether the battery wires are connected well? |
| Vehicle move slowly | 1. Check whether the battery wires are connected well? |
| | 2. Check whether the battery is fully charged |
| | 3. Check whether anything trapped in the wheels |
| | 4. Check whether the charger or battery is damaged |
| Vehicle cannot be charged | 1. Check whether the charger and the battery is well connected |
| | 2. The charger or battery if there is a loose connection |

WARNING

1. This note is to use illustrations to illustrate the operation of the product and product structure, there are a few differences, in kind prevail
2. In order to improve the quality of the products, under the condition of without telling, we may make changes to the product part of the structure with the appearance, please understanding



- Suitable age 37-96months.
- This product should be assembled by adult.
- This instruction contains important safety information content, please keep it as a reference.

About the products

Thank you for choosing our children electric car. We always keep pursuing, doing outstanding design, comfortable and safe ride on car for children, and give your children a wonderful childhood.

Please read this instruction carefully before use. It will tell you the right way of assembling and operating. To avoid incorrect operation damaging the product or injuring your baby, please keep this instruction.

Specifications

| | |
|----------------|---|
| Battery | 12V4.5Ah |
| Main material | PP |
| Suitable age | 37-96months |
| Maximum weight | 30kg |
| G.W | 20kg |
| N.W | 16kg |
| Car Size | 110x 68x 62cm |
| Wheel Size | 110x 58x 37cm |
| Speed | 3.5km/h |
| Operation time | 1-2 hours after charging about 8-12 hours |
| Charge | Liquid AC220V Output 0.5A/2.500mA |
| Fuse | Resettable Fuse |

Part List

| Part Name | Picture | Qty | Part Name | Picture | Qty |
|-------------|---------|-----|----------------|---------|-----|
| 1 Main body | | 1 | 2 Seat | | 1 |
| Wind shield | | 1 | Steering wheel | | 1 |

-1-

MAINTENANCE

1. Check the main parts regularly, check if there's any damage of the battery, charger, plug, cover and the other parts, check if the screws are tight, check if the wire lead is old. If any damage, please stop use and deliver to the professional service.
2. Clean the iron parts with little lubricating oil after a time of use to avoid rust.
3. Keep the car away from fire, avoid direct sunshine, always turn it up and not leave it put in dry place when not use and do not dump the car. Keep the car inside door room or cover it with cloth when not use.
4. Keep the car away from hot objects like stove or heater, for the plastic might be melted when charging. Keep it away from flammable materials to avoid fire.
5. Charge in time after use and do it by adult. When the car will be not used for long time, ensure it be charged and charge once every 3 month to keep the battery life.
6. Clean the vehicle by dry soft cloth, do not use any chemical solvents, soap or water. Do not drive in raining or snowing days.
7. When stop using the car, cut off the power, turn all the buttons to "stop" or "off".
8. Do not use non-metallic fuel.
9. Do not change the line system structure and additional electric system of the vehicle by yourself, repair work must be done by career man or under professional supervision.
10. Toy is not to be used for other purposes.
11. In the correct polarity to the battery.
12. It is forbidden to battery is negative short circuit.
13. The rechargeable battery can't charge.
14. Rechargeable batteries can only be charged under adult supervision.
15. The old and new batteries and different types of batteries cannot be mixed use.
16. Run out of batteries, extracted from toys to properly handle, prevent children playing.

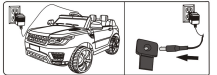
WARNING: NOT TRAFFIC TOOL, TO KEEP SAFE, ADULT'S SUPERVISION IS REQUIRED.

-10-

To avoid the fake trip, please cut the power, please note the things as follows:
The max loading is 30kg, do not over the loading.
Do not drag everything.
Do not fill the water or other liquid touched the circuit, battery and other parts.
Never modify the structure of the toy electric car system.

CHARGE

- This product charge should be adult for safety.
- Before first use, should open the seal, connect the lines/red to red, black to black, please stop use until respond.
- When charging, the battery should be placed on the battery, may be damaged.
- Must use the plates before the battery, the battery will hurt the children when the car is driven.
- The adult should bring out the battery, proper recycling.
- When the car will be not used for long time, ensure be charged and charge once every 3 month to keep the battery life.
- The charger is not to keep it away from the children.



1. Insert the charger tap charging hole.
2. Insert the charger to the power socket (The car won't start for charging status).

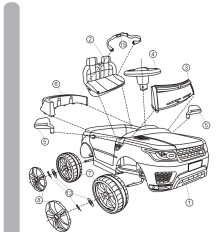
NOTE:

- The toy can use the manufacturer specified battery and charger.
- The old and new batteries and different types of batteries cannot be mixed use.
- Do not open the battery and charger.
- Do not overuse the battery.
- Before charge, please connect the battery and the charger and the battery and the charger, stop use until respond.
- When charging, the battery should be placed on the battery, may be damaged.
- Must use the plates before the battery, the battery will hurt the children when the car is driven.
- The adult should bring out the battery, proper recycling.
- When the car will be not used for long time, ensure be charged and charge once every 3 month to keep the battery life.
- The charger is not to keep it away from the children.

-2-

| Part Name | Picture | Qty | Part Name | Picture | Qty |
|--------------------|---------|-----|-------------------|---------|-----|
| 5 Rear-view mirror | | 1 | 6 Rear wing | | 1 |
| 7 Driving wheel | | 4 | 8 Wheel Cover | | 4 |
| 9 Drivels ax | | 1 | 10 Remote Control | | 1 |
| 11 Charge | | 1 | 12 Tool bag | | 1 |
| 13 Gear box | | 2 | 14 Battery | | 1 |

-2-



| Exploded map | Qty |
|-----------------------|-----|
| ① Main body x1 | 1 |
| ② Seat x1 | 1 |
| ③ Wind shield x1 | 1 |
| ④ Steering wheel x1 | 1 |
| ⑤ Rear-view mirror x1 | 1 |
| ⑥ Rear wing x1 | 1 |
| ⑦ Driving wheel x4 | 4 |

-3-

2.4G Remote Control Manual

First time use need to match code, the product has memory function.

1. Hold down "1" key for 3 seconds, start match code. The first LED flash.
2. Turn on the car body power on. The first LED is on. Match code Success.
3. Remote "0" second not on will be steady. Press any key up.
4. Key repeat: "1" Forward; "2" Back; "3" Left; "4" Right; "5" Speed; "P" Stop. Press "5" key set speed. 1st Run is low speed. 2nd it is medium speed. 3rd it is high speed. Back is a low low speed.
5. Press "P" key hold the brake. All LED flash.

WARNING

1. When using the remote control, please keep less than 10m to the car.
2. The remote control should be operated only by adult, keep it away from the children.
3. Before use, please read the instruction carefully and make the empty seat, do not allow children drive before you know how to control.
4. Do not use this product on road, under or other place with barrier.
5. To avoid the circuit damage, please do not use the remote control in rain or other very moist circumstances.
6. Do not mix new and old batteries or different batteries.
7. When not use for a long time, please remove the battery in case it cause any damage to the circuit board and the remote control.
8. Do not drop the remote control when using.
9. Take care of the remote control, do not lose it.
10. If the remote control can work no for than 3m, it might because the battery is not enough battery, please replace the cell inside the remote control.

Change the batteries: Remove the battery cover, put 2 batteries in side the remote control, then fasten the cover.

FUSE

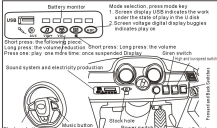
This product configure self-resetting fuse, when the driving car stopped, mainly because of the current exceeds the specified value, at the time, you should wait 3 seconds, then the fuse will automatic reset.

-6-

HOW TO OPERATE YOUR VEHICLE

1. Before use, must be read the product instructions.
2. According to the remote control, make sure the car is controlled well.
3. Make all the screws fastened tightly in the right place.
4. Before driving, please check the safety rules and make them understood.
5. In order to reduce dangerous:
 - Please sit on the seat when driving.
 - Only one child drive every time.
 - Driving must be under the adult supervision.
 - Make the driving in safe place, keep driving on hard and flat ground.
 - Do not drive in dangerous places.
 - A ditch, pit, river side slopes or other uneven ground.
 - Beside the road or other places for cars and people walking.
 - Barrier which might cause damage and injury.
 - Other dangerous places.
 - Do not drive in black it may cause injury. Do drive in day time or bright places.

2. OPERATE AS FOLLOWS

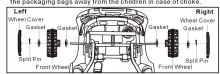


Note: Must turn your children when change gears, release the foot switch, after the car stopped.
Do not change gears when the car is driving, or damage the line and other parts.

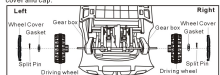
-7-

Assembling

- The vehicle should be assembled by adult before use.
- The small parts might cause choke, please keep away from the children. Children under 37 months can not use.
- Please check the number of the parts before assembling, and keep the packaging bags away from the children in case of choke.



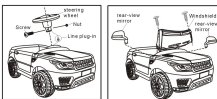
1. Assemble the front wheel.
Turn over the car body. Fix the gasket wheel, gasket onto the front axle from each side. Fasten tightly with the split pin, put on the wheel cover and cap.



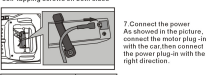
2. Assemble the back wheel.
As shown in the picture, fix these parts onto the back axle. Fasten tightly with the split pin, put on the wheel cover and cap.

3. Assemble the steering iron.
Set the straight side of string line into the hole in the front of the car body, make sure that the remote control on the direction of alarm fixed card into the steering gear box groove, through the hole on the dashboard, hooked in the middle of the hole front axle by bend of one of the iron.

-4-



4. Assemble the steering wheel.
Insert cable plug in real first, then hold the steering wheel in the steering rod, fixed it by screws and nuts.
5. Assemble the mirror.
Insert the mirrors into the hole on the car body tightly. Aim the wind deflector neck car body down on inserts, fix with two self-tapping screws on both sides.

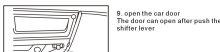


7. Connect the power.
As shown in the picture, connect the motor plug-in with the car, then connect the power plug-in with the right direction.



8. Assemble the amperage and seat cushion.
As shown in the picture, insert the seat into the body, according to the position, fix the seat into the body, then fasten by two self-tapping screws.

-5-



8. open the car door.
The door can open after push the shifter lever.

Warning. Not to be used in traffic.
WARNING:
Must be assembled by an adult.

GIVE SAFETY EDUCATION BEFORE USE

1. To avoid harmed by the little spare part, less than 3 years old can't drive.
2. Assembled and charged Only by adult.
3. The max loading is 30kg, suitable for 3-9 years old children. Do not over load the car.
4. This product is not traffic tool, keep driving on hard and flat ground. Do not drive in the dangerous place, the street, road or shop.
5. Do not drive the mine or uneven places.
6. Children should be instructed to the correct operation. To prevent the damage caused by improper operation, accident.
7. When change gears, release the foot switch, after the car stopped.
8. When driving, adult care and supervision is necessary. Do not leave and keep your children your sight.
9. Do not let the product in rain or other ways touch water, avoid damage the circuit and motor.
10. Check whether the charge plug-in and other parts are in good condition and well connected in time.
11. To make sure safety and use the car, avoid damage the charge, battery or system, must be use the original.
12. When stop using the car, cut off the power, turn all buttons to "stop" or "off".
13. The charge and battery of the products are not toy forbidden.
14. Do not use the spare parts not supply from us.
15. The product mainly use PP, safety use time is 2 years.

-6-