

TECHNICAL DATA SHEET

HDC – Rigid Core Flooring

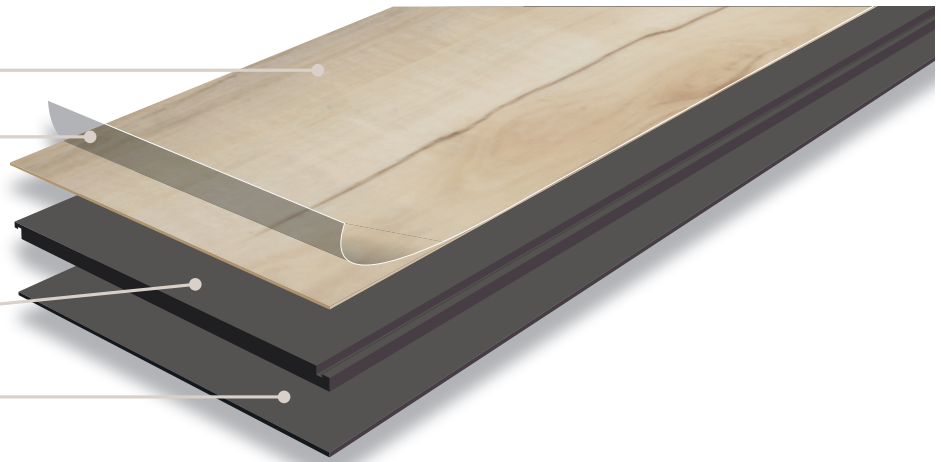
Dent Resistant

Scratch Resistant
Wear Layer

Patented Locking System
for Easy Installation

Rigid Stone-Based Core

Sound Reducing, Comfort Adding
Pre-Attached Underlayment



7 x 48

5MM THICKNESS/12MIL WEAR LAYER

PRODUCT INFORMATION



Lifetime Limited Residential Warranty
10 Year Limited Light Commercial Warranty

STANDARDS – SAFETY & PERFORMANCE

STANDARD	DESCRIPTION	REQUIREMENTS	RESULTS
ASTM E648	Critical Radiant Flux (Radiant Panel)	Class I: $\geq 0.45 \text{ W/cm}^2$	Passes Requirements ¹
ASTM E662	Smoke Density	Flaming & Non-Flaming ≤ 450	Passes Requirements ²
ASTM F970	Static Load	No Requirements if Wear Layer < 20mil	Not Applicable
ASTM F2199	Dimensional Stability	$\leq 0.25\%$ / lineal ft.	Surpasses Requirement
ASTM F925	Chemical Resistance	No more than "Slight Change"	Surpasses Requirement
ASTM F1514	Resistance to Heat	Average $\Delta E < 8.0$	Surpasses Requirement
ASTM F1515	Resistance to Light	Average $\Delta E < 8.0$	Surpasses Requirement
ASTM F963	Heavy Metals	Refer to Standard	Passes Requirements
ASTM D7823	Phthalates	Refer to CPSIA ³	Passes Requirements

NOTES

1. ASTM E648 – Critical Radiant Flux (Radiant Panel): Passes Requirements for Class I per International Building Code (IBC) 2018 NFPA 101 Life Safety Code
2. ASTM E662 – Smoke Density : 450 is the limit established by many state, county, and/or local building and/or fire codes, but is not set as a limit for (resilient) flooring products nationwide. Thus, Smoke Density requirements for flooring products may vary from jurisdictions to jurisdictions.
3. CPSIA = Consumer Product Safety Improvement Act