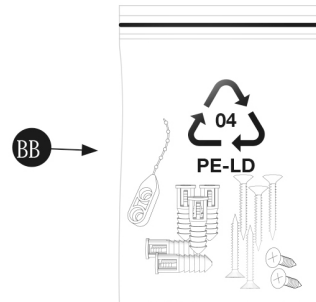
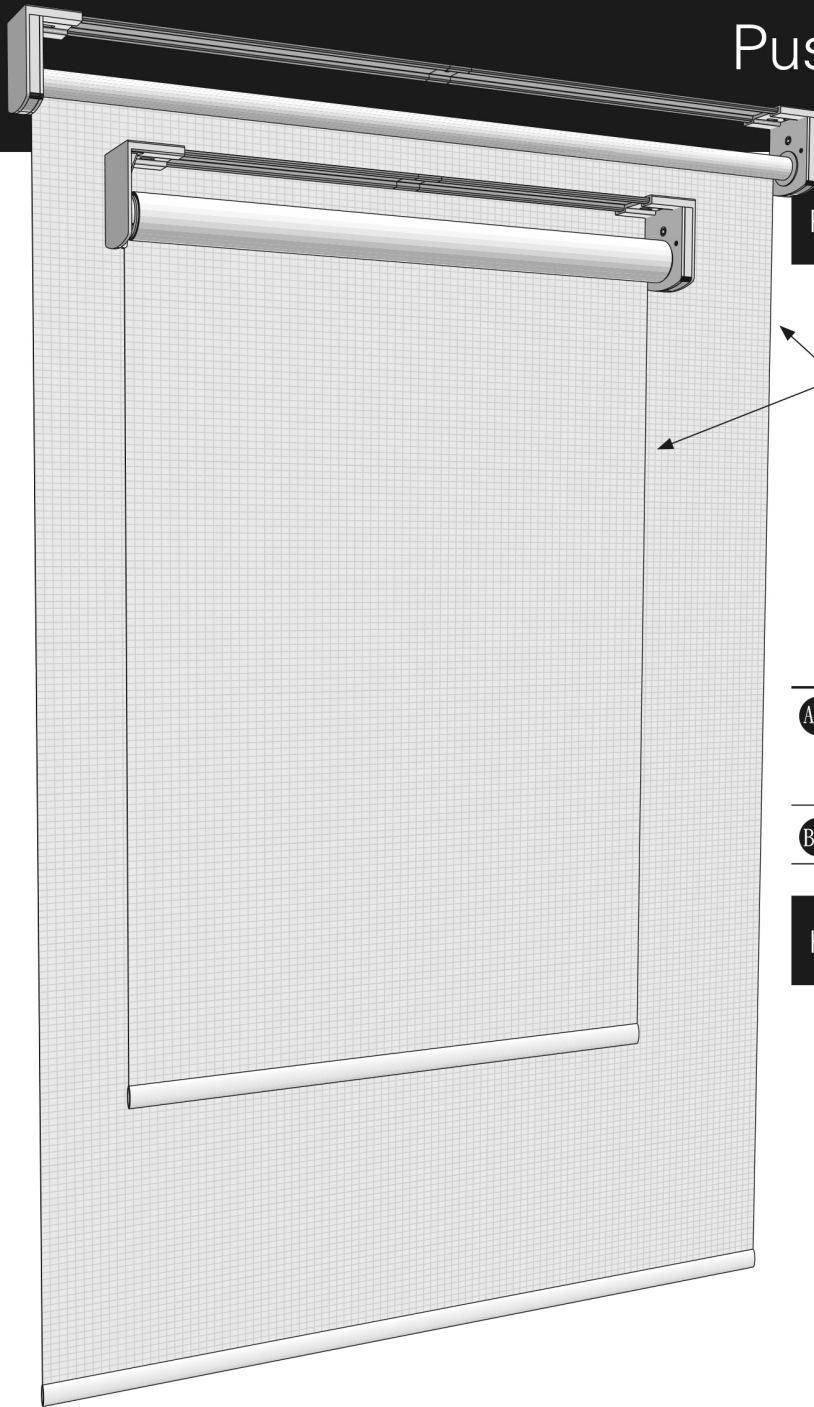


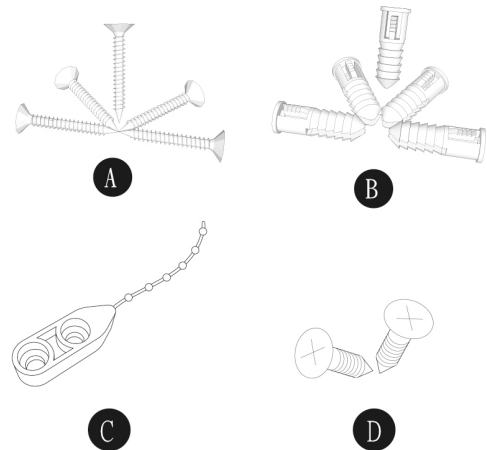
# Pushup Solar Roller Shade Installation Instructions

## Package Contents




| Name  | Quantity |
|---|----------|
| AA Solar Roller Shade (Single Spring Bracket)<br>- or -<br>Solar Roller Shade (Double Spring Bracket) | 1        |
| BB Hardware Pack  | 1        |

## Hardware Pack Contents




### Tools Required:

Measuring tape or ruler  
Pencil  
Phillips head screw driver   
Drill

### Note:

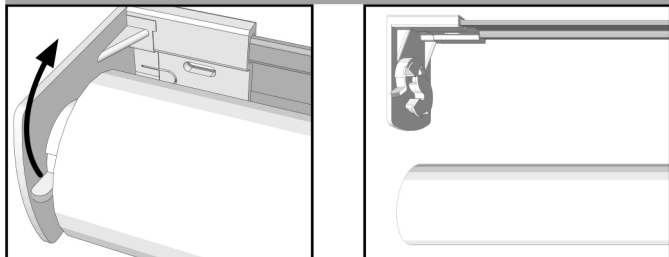
If mounting in drywall or plaster wall, use the provided plastic screw anchors (B).

| Name   | Quantity |
|--|----------|
| A Phillips Head Screws  | 5        |
| B Screw Anchors  | 5        |
| C Bead Chain Hold Down Device  | 1        |
| D Small Phillips Head Screws   | 2        |

# Installation Instructions

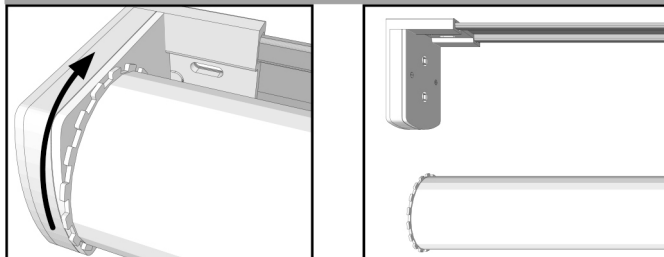
**IMPORTANT!** Remove the shade from the headrail assembly before proceeding. Do not remove paper wrap until after installation.

## Single Spring Bracket Shades



Open the left clip mounting bracket by rotating the clip upward, then remove the shade from headrail assembly. Do not remove the paper wrap.

## Double Spring Bracket Shades

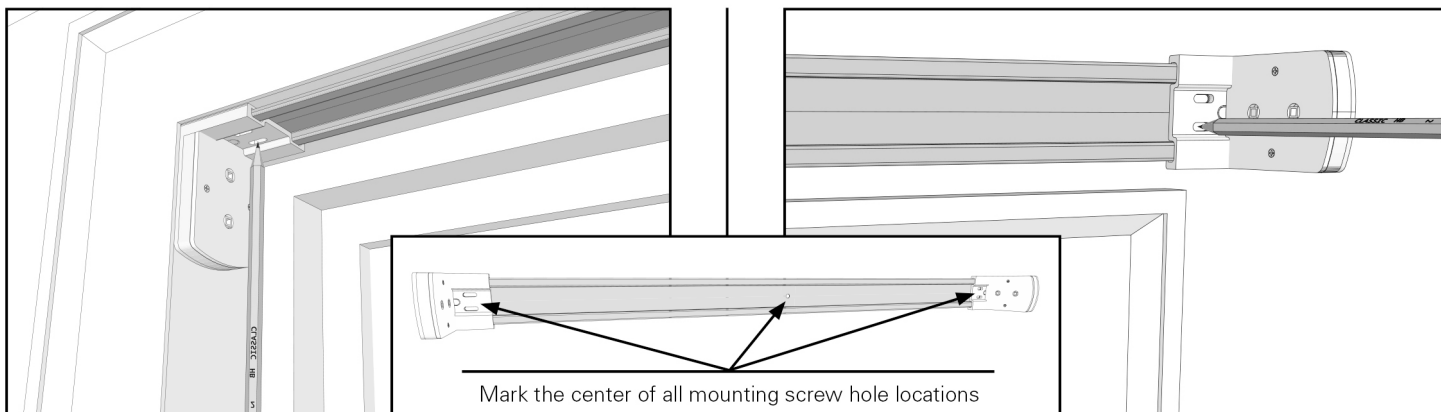


Turn the dial on the left side of the shade clockwise to retract the pin, then remove the shade from headrail assembly. Do not remove the paper wrap.

## Inside Mount

- or -

## Outside Mount

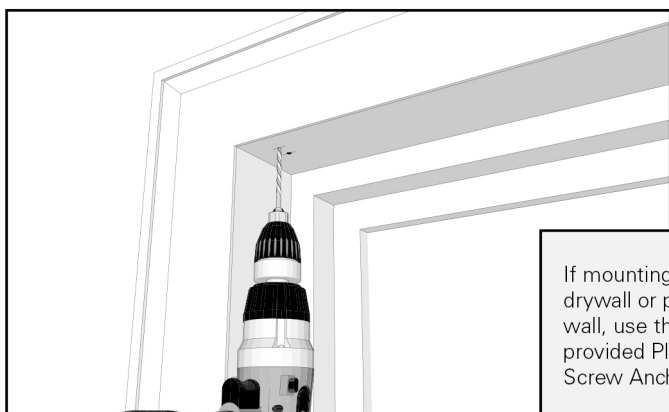


### Step 1 - Mark Mounting Hole Locations

Position the headrail assembly in the desired location and pencil mark the middle, left, and right mounting screw hole locations.

### Step 1 - Mark Mounting Hole Locations

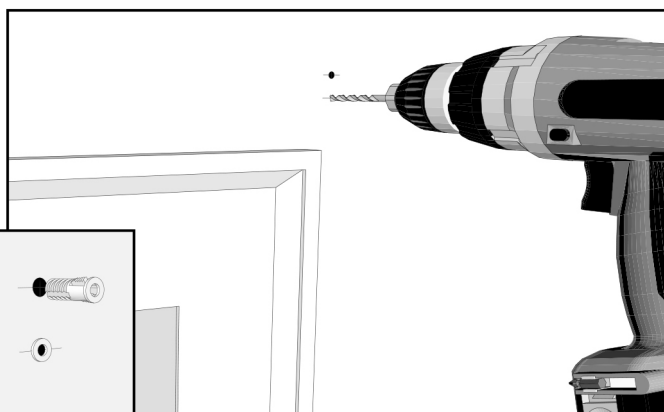
Position the headrail assembly in the desired location and pencil mark the middle, left, and right mounting screw hole locations.



### Step 2 - Pre-drill Mounting Holes

Pre-drill holes for Mounting Screws (A).

**Note:** If mounting in drywall or plaster wall, use the provided Plastic Screw Anchors (B).



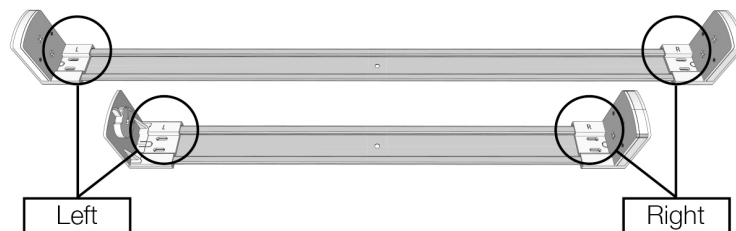
### Step 2 - Pre-drill Mounting Holes

Pre-drill holes for Mounting Screws (A).

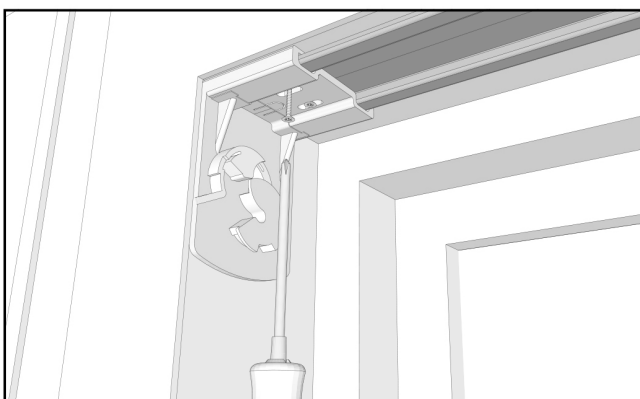
**Note:** If mounting in drywall or plaster wall, use the provided Plastic Screw Anchors (B).

## Installation Instructions (continued)

**IMPORTANT!** It is important the the headrail is installed with the brackets in the proper position. The brackets are marked "L" (left) and "R" (right). Make sure to install the headrail with "R" to right side and "L" to left side. If the headrail is installed improperly, it will cause the springs to turn in the wrong direction and the shade will not operate properly.

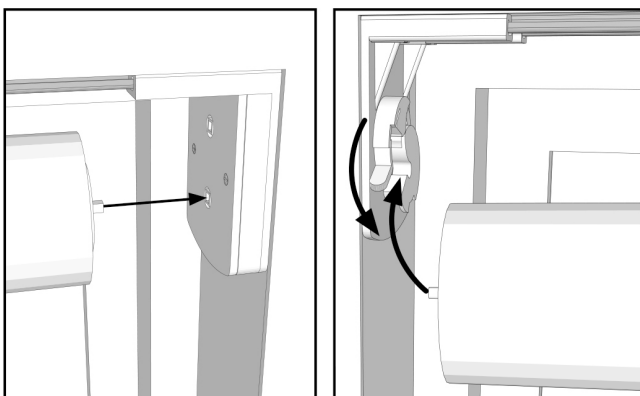


### Inside Mount (continued)



#### Step 3 - Mount Headrail Assembly

Position and attach the headrail assembly using the provided mounting screws (A).



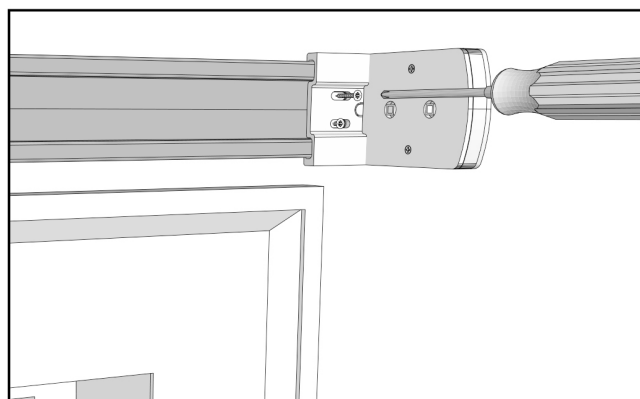
#### Step 4 - Install Shade into headrail

Insert the square pin on the right side of the Shade (AA) into the right side bracket, rotating slightly to fully seat the pin into the mounting bracket.

Close the clip on the left side mounting bracket until it clicks and locks.

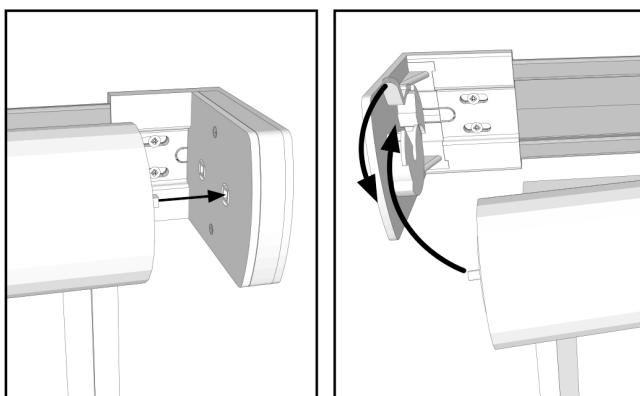
- or -

### Outside Mount (continued)



#### Step 3 - Mount Headrail Assembly

Position and attach the headrail assembly using the provided mounting screws (A).



#### Step 4 - Install Shade into headrail

Insert the square pin on the right side of the Shade (AA) into the right side bracket, rotating slightly to fully seat the pin into the mounting bracket.

Close the clip on the left side mounting bracket until it clicks and locks.

**See next page for shades with two spring brackets.**

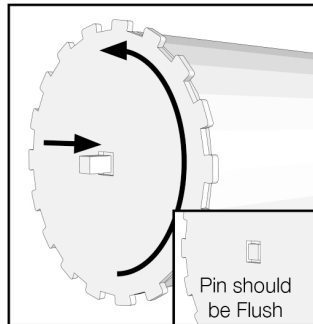
## Installation Instructions (continued)

### Inside Mount (continued)

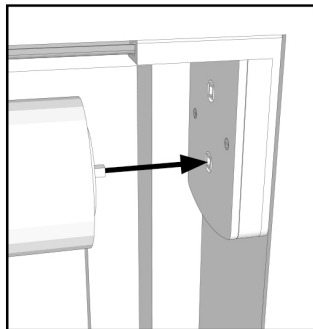
#### Step 4 - Install Shade into headrail Double Spring Bracket Shades

Before installing the shade roll, make sure that the end pin is fully retracted.

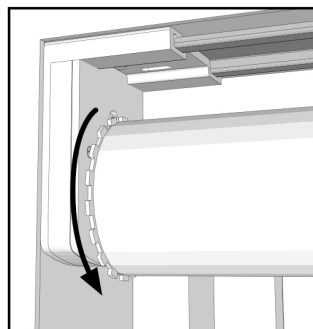
Rotate the dial clockwise until the pin is flush with the face of the dial.



Insert the square pin on the right side of the Shade (AA) into the right side spring bracket, rotating slightly to fully seat the pin into the mounting Bracket.



While holding the right side of the Shade (AA) in place, swing the left side of the Shade (AA) into the left mounting bracket. Rotate the dial clockwise until the pin fully extends and snaps into the bracket. It may be necessary to slightly rotate the shade roll to properly align the pin.



#### Step 5 - Remove Paper Wrap

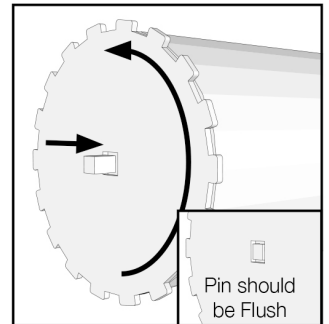
After Installing the shade into the headrail you may remove the protective wrap and begin using your shade.

### - or - Outside (continued) Mount

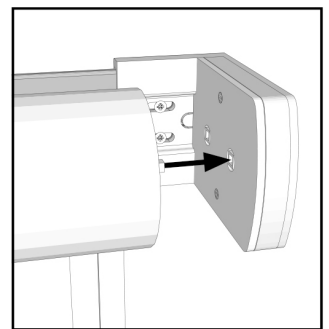
#### Step 4 - Install Shade into headrail Double Spring Bracket Shades

Before installing the shade roll, make sure that the end pin is fully retracted.

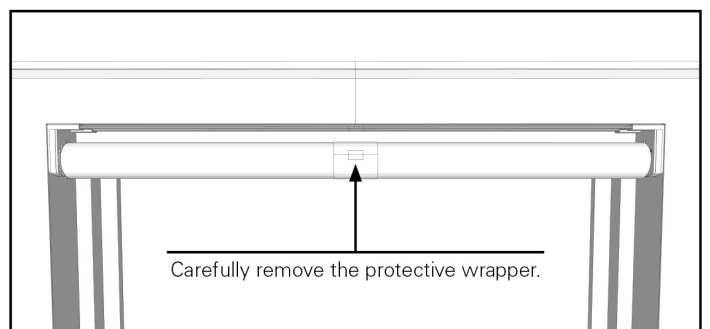
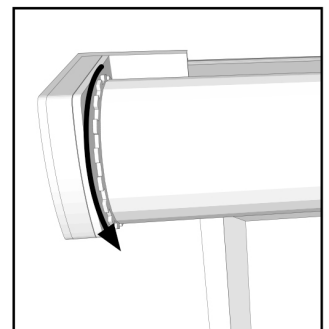
Rotate the dial clockwise until the pin is flush with the face of the dial.



Insert the square pin on the right side of the Shade (AA) into the right side spring bracket, rotating slightly to fully seat the pin into the mounting Bracket.



While holding the right side of the Shade (AA) in place, swing the left side of the Shade (AA) into the left mounting bracket. Rotate the dial clockwise until the pin fully extends and snaps into the bracket. It may be necessary to slightly rotate the shade roll to properly align the pin.

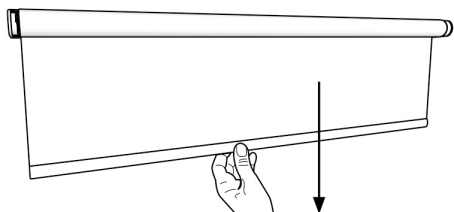




## Operation

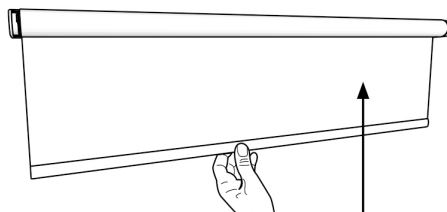
### Lowering the Shade

Hold the shade in the middle of the pull bar and gently pull the shade down to the desired position and release.



### Raising the Shade

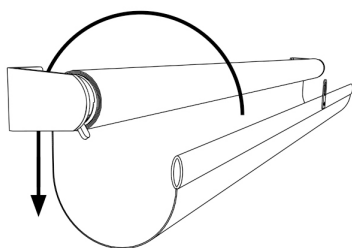
Hold the shade in the middle of the pull bar and gently push the shade up to the desired position and release.



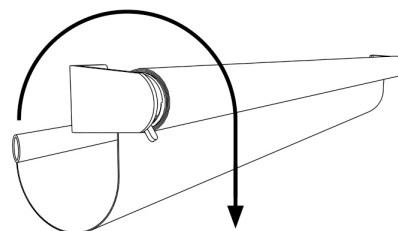
## Adjust Full Open Position

The amount of fabric hanging from the shade when in its fully open position can be modified without increasing the spring motor tension by wrapping the fabric around the shade roll or unwrapping the fabric from around the shade roll.

To raise the fully opened position of the shade, firmly hold the shade roll so it does not turn and wrap the hanging portion of the shade over the top and around the back of the shade roll.



To lower the fully opened position of the shade, firmly hold the shade roll so it does not turn and unwrap the hanging portion of the shade from the back and over the top of the shade roll.



**NOTE:** Do not remove the shade from the mounting brackets to make this adjustment.

## Troubleshooting

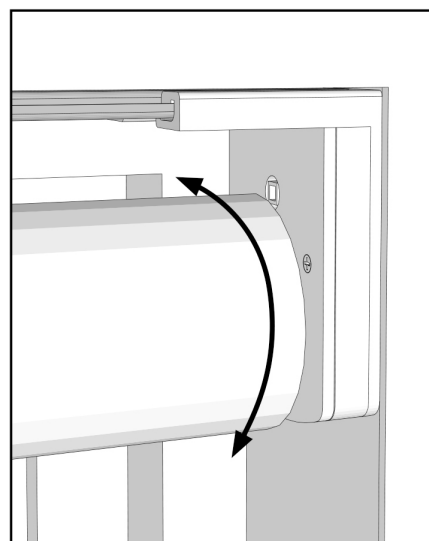
**Problem:** The shade will not retract properly

**Possible Cause:** The end cap pin(s) may not be fully inserted into the mounting brackets.

**Solution:** Slightly rotate the Shade (A) within the mounting brackets to fully seat the pin(s).

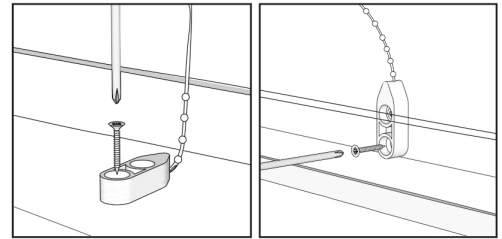
**NOTE:** Make sure the end cap pins are fully INSERTED into the spring brackets firmly.

**NOTE:** It may be necessary to completely remove the shade from the brackets to properly seat the pin(s).



## Install Bead Chain Hold Down Device

Position the Bead Chain Hold Down Device (C) in the center of the window opening.  
Attach using Small Screws (D).



Inside Mount

Outside Mount

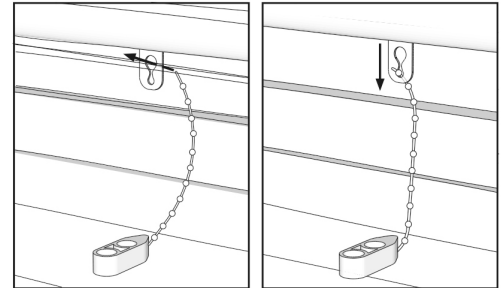
## Attach Bead Chain to Shade

Completely lower the shade.

Insert the bead chain through the large opening of the hold down tab.

Pull down on the bead chain until it locks into the smaller section of the tab.

To release the bead chain, pull up on the bead chain and push back through the larger opening of the tab.



## Cleaning

Periodic Vacuuming with proper attachments suggested. Spot clean with mild detergent free soap, testing first in an inconspicuous area.

## One-Year Limited Warranty

### What is covered under this warranty:

Entire product against manufacturing defects (i.e., a flaw in the product design, materials or workmanship that causes the product to no longer function (properly).

### What is NOT covered under this warranty:

- Normal wear and tear

Failure due to:

- abuse • exposure to salt air • improper installation • accident • extraordinary use • misuse • alterations
- improper operation • improper cleaning • misapplication • damage from pets/insects • improper handling

Any shade that has with the passing of time:

- loss of color intensity • yellowing or cracking of plastic parts

Costs that are associated with:

- shipping • product removal • transportation to and from the retailer • product remeasure
- incidental or consequential damages • product reinstallation

*Note: In the event there are multiple shades in the same room, only the defective shade will be replaced.*

### THIS SHALL BE YOUR SOLE REMEDY UNDER THIS WARRANTY:

If this product is found to have manufacturing defect in materials or workmanship, we will (at our discretion) do one of the following:

- repair the product • replace the product • refund the cost of the product

*Note: Colors vary from lot to lot and may not match previous purchases exactly.*

*Discontinued items or color selections will be replaced with the closest equivalent current product.*

### To obtain warranty service:

If you suspect this product has a manufacturing defect in materials or workmanship:

1. Locate the sales receipt or your proof of purchase.

### Your Rights under State Law:

This limited warranty gives you specific legal rights, and you may have other rights, which vary from state to state. Some states do not allow limitations on how long a warranty lasts, so the above limitations may not apply to you. No representative or unauthorized employee has the authority to increase or alter the obligation of this warranty. This limited warranty supersedes any previous versions.