



Before You Start

Please read all instructions carefully and keep it for future reference.

Warnings:

Attention! Use it with protective equipment.

Attention! Not use it in the traffic.

Attention! The product is not suitable for the children under 3 years.

General Warnings:

- ⚠ The product must be installed and used under the supervision of an adult.
- ⚠ Read through each step carefully and follow the proper order.
- ⚠ Remove all packaging, separate and count all parts and hardware.
- ⚠ Please ensure that all parts are correctly installed, incorrect installation can lead to a danger.
- ⚠ We recommend that, where possible, all items are assembled near to the area in which they will be placed in use, to avoid moving the product unnecessarily once assembled.
- ⚠ Ensure a secure surface during construction, and place the product always on a flat, steady and stable surface.
- ⚠ Please use the product carefully, as the product requires great skill, avoid accidents by the user or others, by fall or collision.
- ⚠ Please wear suitable protective equipment during use, e.g. protective helmet, gloves, knee pads, elbow pads etc.

CHILDREN'S ELECTRONIC TOY ATV



WARNING

Must be assembled by an adult.

- Suitable for 3+ Years
- Maximum user weight: 110 lbs

OWNERS MANUAL

with Assembly Instructions

Read and understand this entire manual before using!

Please keep this manual for future reference as it contains important information.
Before first time use, charge the battery for at least 8-12 hours.

A**About Your New Vehicle**

On the purchase of your new Ride-On.

This ride-on car will provide your child with many miles of riding of enjoyment. To help assure you and your rider a safe ride we ask you to please read this manual carefully, and keep it for future reference.

Follow the recommendations in this manual, they are designed to improve the safety and operation of your ride-on car and its rider.

Specification

	2WD
Battery	12V7AH X1
Charger input	12V700-900mA Depend on local voltage
Motor	2*RS550-12V RPM12000

- Suitable age:** 3+ Years
Charge time: 8~12 hours
Load capacity: Under 110 lbs.
Size of car: 44.5" x 27" x 30"
Speed: 3-8 km/h

**BATTERY INFORMATION**

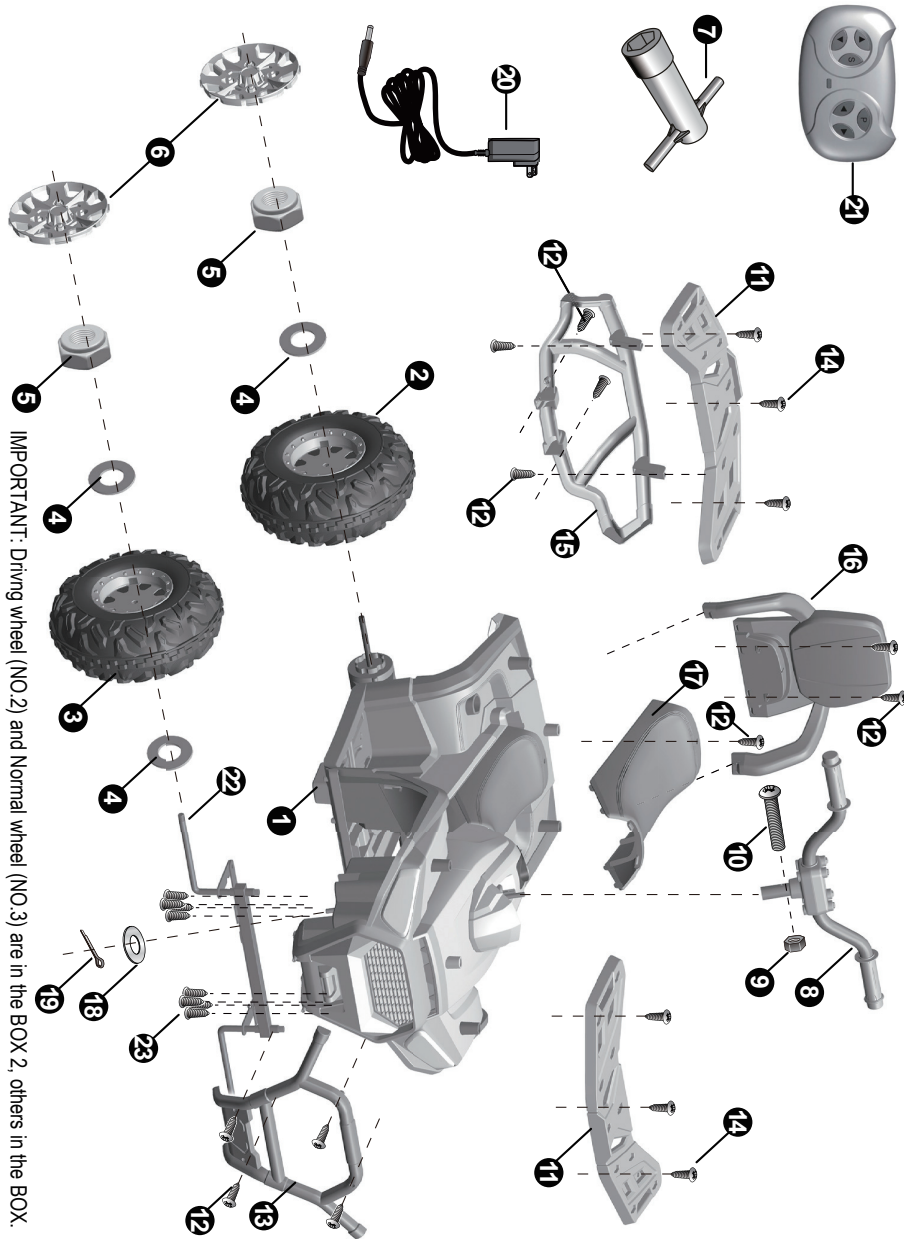
- Non-rechargeable batteries are not to be recharged.
- Rechargeable batteries are to be removed from the toy before being charged.
- Rechargeable batteries are only to be charged under adult supervision.
- Different types of batteries or new and used batteries are not to be mixed.
- Batteries are to be inserted with the correct polarity.
- Exhausted batteries are to be removed from the toy.
- The supply terminals are not to be short-circuited.

Parts List**B**

NO.	PART NAME	Q'TY (PCS)		REMARK
		2WD	4WD	
1	Vehicle body	1	1	
2	Drivng wheel	2	2	
3	Normal wheel	2	2	
4	Ø12 washer	6	4	
5	Lock nut	4	4	
6	Wheel cover	4	4	
7	Spanner	1	1	
8	Handle bar	1	1	
9	Ø5 nut	1	1	
10	M5X30 machine screw	1	1	
11	Luggage carrier	2	2	
12	Ø4x16 screw	11	11	
13	Front roll bar	1	1	
14	Ø5x12 screw	6	6	
15	Rear roll bar	1	1	
16	Back rest	1	1	
17	Seat	1	1	
18	Ø10 plastic washer	1	1	
19	Split pin	1	1	
20	Charger	1	1	
21	Remote controller	1	1	If equipped
22	Front axle	1	1	
23	Ø4x16 screw	8	8	For front axle
A	Ø4x20 screw	\	8	4WD ONLY, not shown
B	Wheel driver	\	2	4WD ONLY, not shown

C

Parts Diagram



IMPORTANT: Driving wheel (NO.2) and Normal wheel (NO.3) are in the BOX 2, others in the BOX.

D

Safety



PREVENT INJURIES AND DEATHS:

- **NEVER LEAVE CHILD UNATTENDED. ADULT DIRECT SUPERVISION IS REQUIRED.** Always keep child in view when child is in vehicle.
- This toy should be used with caution since skill is required to avoid falls or collisions causing injury to the user or third parties.
- Protective equipment should be worn.
- Never use in roadways, near cars, or on near steep inclines or steps, swimming pools or other bodies of water.
- Always wear shoes, always sit on the seat.
- Not to be used in traffic.
- This toy is unsuitable for children under 36 months due to its maximum speed; Maximum user weight is 110 lbs.
- This toy has no brake.



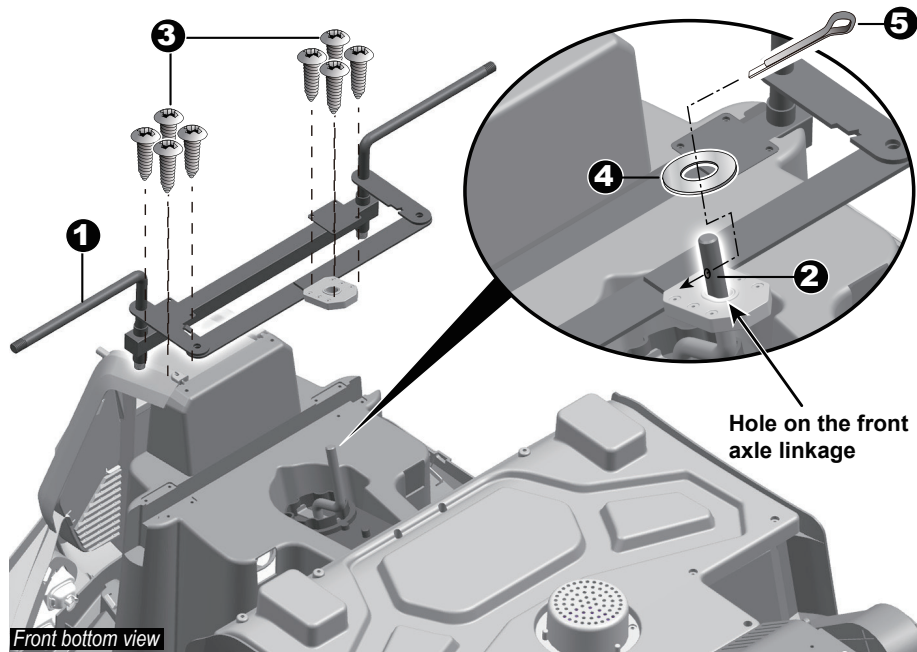
WARNING:

- **CHOKING HAZARD!** Not suitable for children under 36 months.
- **Must be assembled by an adult.**

Rules for Safe Riding

- Keep Children within Safe Riding Areas:
 - Never use in roadway, near motor vehicles, on lawn space, on or near steep inclines or steps, swimming pools or other bodies of water;
- Use the toy only on flat surfaces. Such as inside your house, garden or playground.
- Never use in the dark. A child could encounter unexpected obstacles and have an accident. Operate the vehicle only in the daytime or a well-lit area.
- It is prohibited to change the circuit or add other electric parts
- Inspect wires and connections of the vehicle periodically.
- Do not let any child touch the wheels or be near them when the car is moving .
- This vehicle has adjustable play seat belts. Please instruct children how to tie the safety belt before using, guarantee the security.

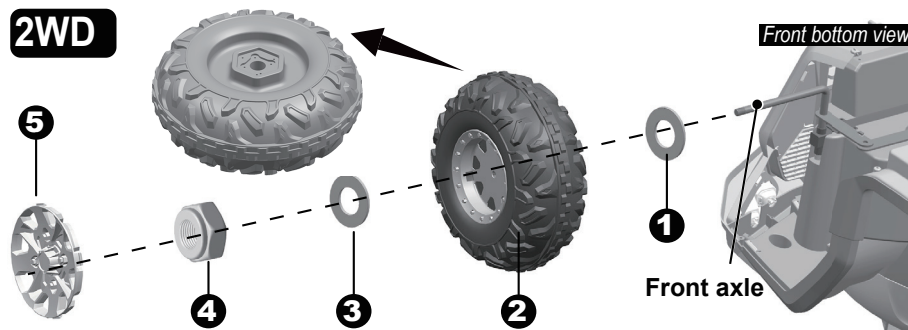
E Attach the Front Axle



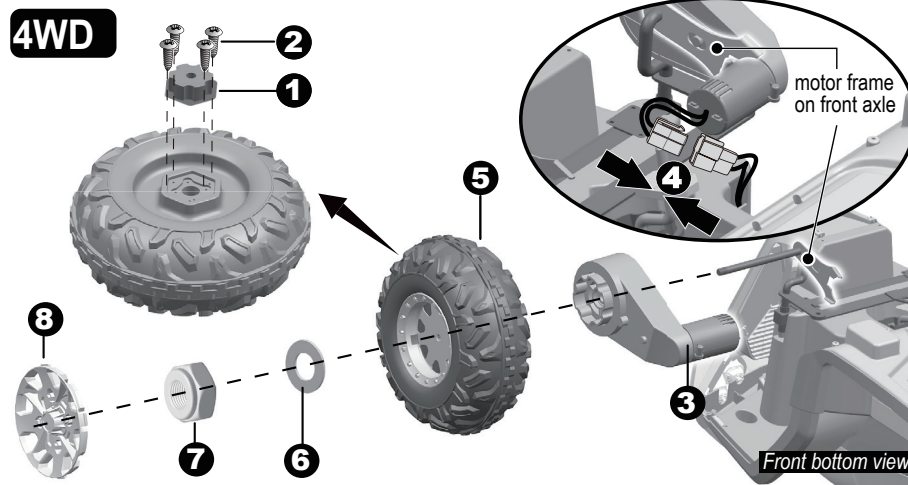
• Gently turn the vehicle body upside down.

1. Fit the front axle to the vehicle body.
2. Insert the bent end of the steering column into the hole on the front axle linkage.
3. Insert eight $\varnothing 4 \times 16$ screws through the front axle and into the vehicle body, and tighten with a screwdriver.
4. Fit a $\varnothing 10$ plastic washer onto the bent end of the steering column.
5. Insert a split pin into the hole on the bent end of the steering column, bend the ends of split pin back using a long nose pliers (not included).

Attach the Front Wheels



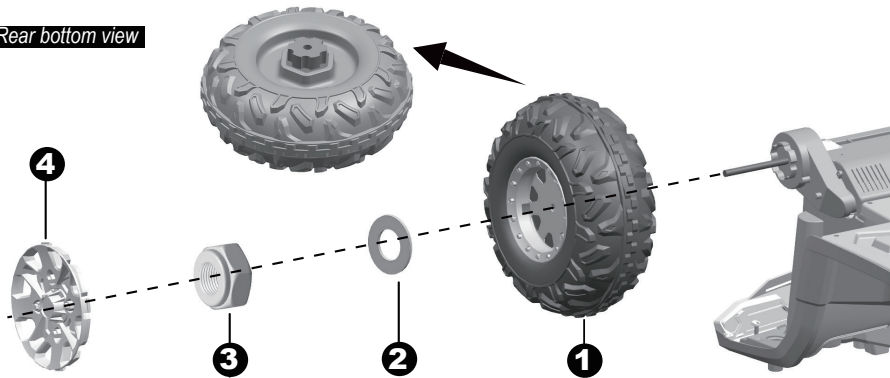
1. Slide a $\varnothing 12$ washer onto the front axle.
2. Slide a wheel onto the front axle.
3. Slide a $\varnothing 12$ washer onto the front axle.
4. Tighten a lock nut to the end of the front axle with a spanner. DO NOT over tighten.
5. Insert the tabs on the wheel cover into the slots on the wheel. Repeat for the other front normal wheel.



- 1-2. Fit the wheel driver to the normal wheel, and tighten four $\varnothing 4 \times 12$ screws to secure it.
3. Slide a gear box onto the front axle ("R" labeled fit to right side, "L" labeled fit to left side.) Make sure the gear box match up with the motor frame on the front axle as shown.
4. Plug the connector on the motor in the connector on the vehicle body.
5. Slide a driving wheel onto the front axle. Make sure the gear on the driving wheel match up with the gear box on the front axle.
6. Slide a $\varnothing 12$ washer onto the front axle.
7. Tighten a lock nut to the end of the front axle with a spanner. DO NOT over tighten.
8. Insert the tabs on the wheel cover into the slots on the wheel. Repeat for the other front driving wheel.

E

Attach the Rear Driving Wheels

Rear bottom view

Cut off the rubber band over the rear gear boxes.

1. Slide a wheel onto the rear axle. Ensure the wheel match up with the gear box.
2. Slide another $\Phi 12$ washer onto the rear axle.
3. Tighten a lock nut to the end of the rear axle with a spanner.

Repeat the above procedure to assemble the other rear wheel to the rear axle.

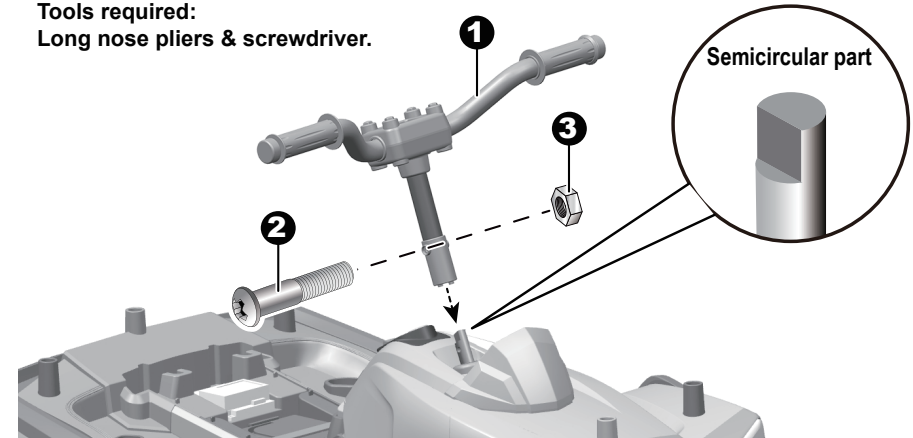
HINT: An extra spanner has been provided to hold the Lock Nut on the other side of the rear axle while tightening the Lock Nut on the other side.

4. Insert the tabs on the wheel cover into the grooves on the wheel.
- Repeat for the other rear driving wheel.

Attach the Handle bar & Front Luggage Carrier

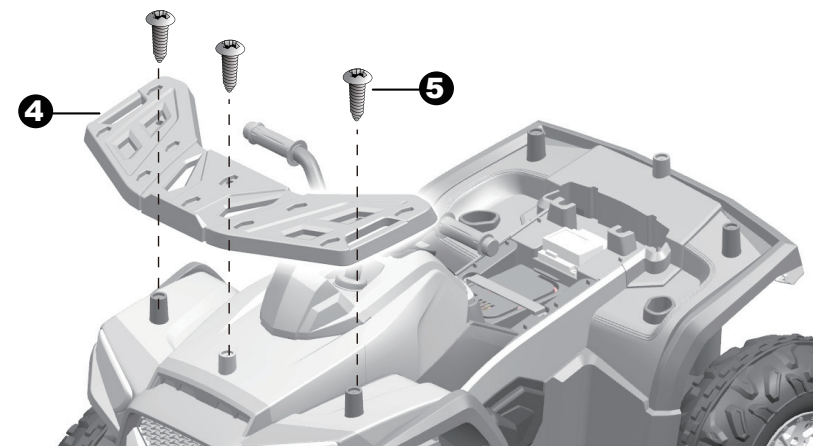
E

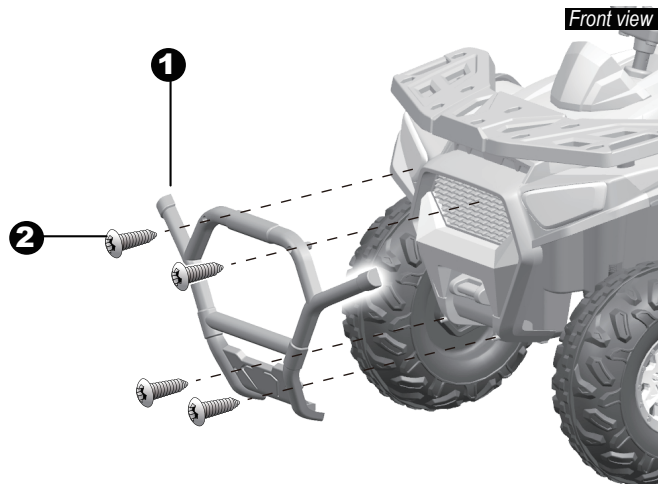
Tools required:
Long nose pliers & screwdriver.



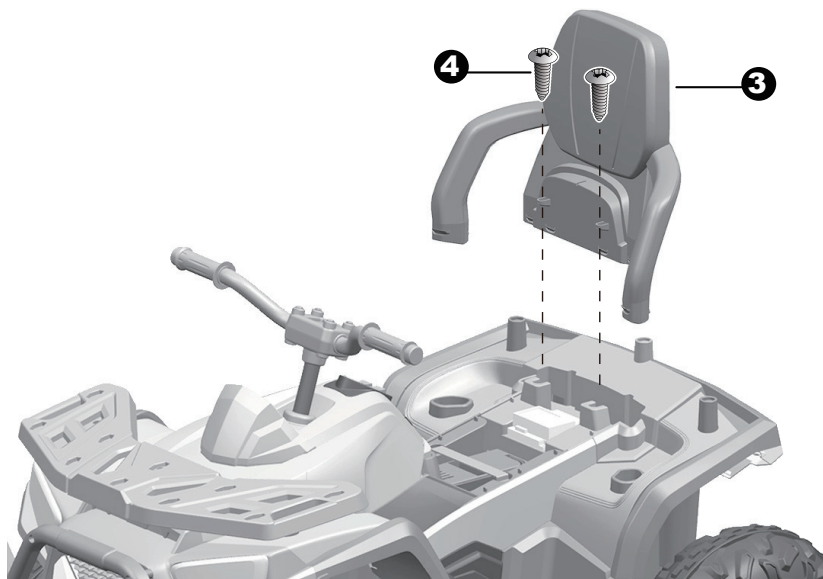
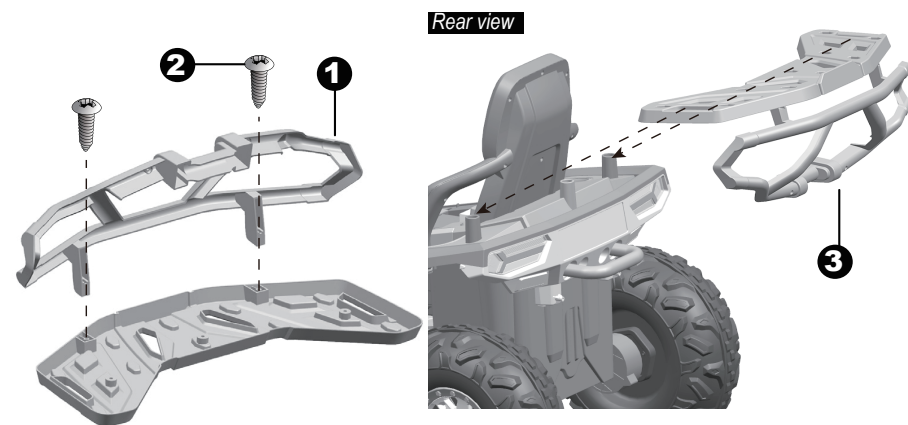
Turn the vehicle body over.

1. Fit the steering wheel to the end of the steering column. **HINT: The handle bar is designed to fit the vehicle body only in one way. The semicircular groove in the handlebar must match up with the semicircular part at the end of the steering rod.**
- 2-3. Line up the holes on the steering wheel with the holes on the steering column, insert the M5x30 machine screw. Fasten a nut on the opposite end of the screw. Using a long nose pliers to hold the nut while tightening the screw on the other side with a screwdriver.
4. Fit a luggage carrier to the vehicle body.
5. Tighten three $\text{Ø}5 \times 12$ screws to secure.

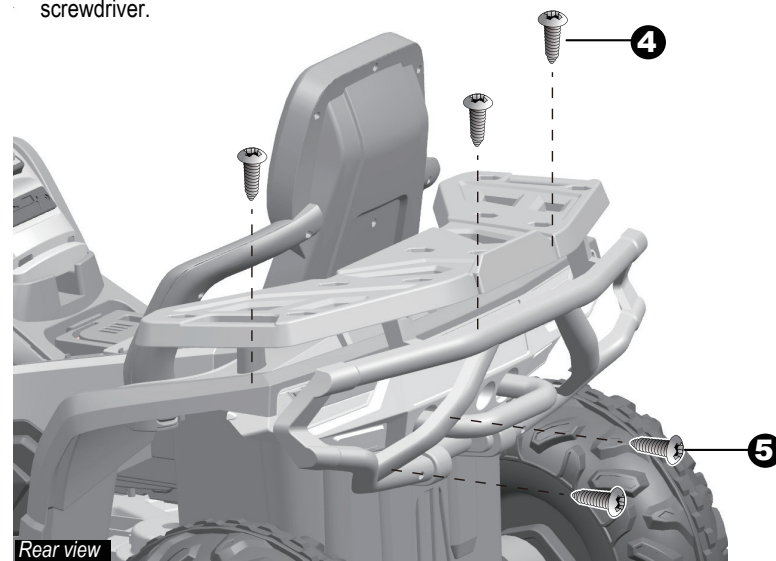


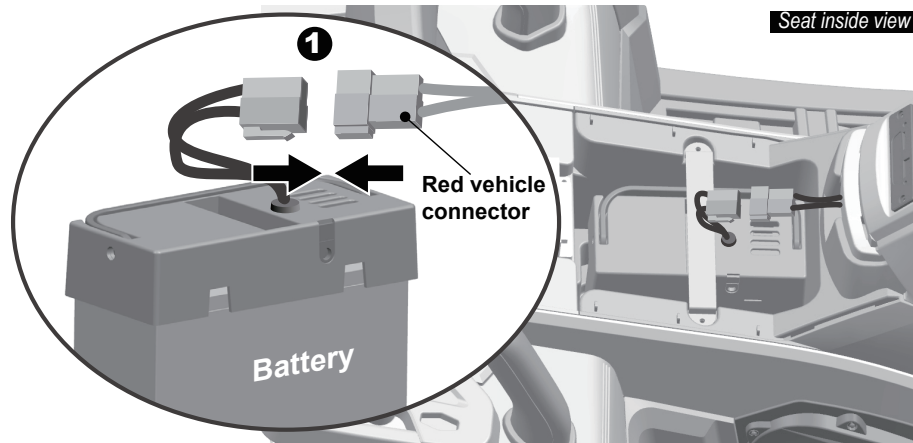
E**Attach the Front Roll Bar & Back Rest**

1. Fit the front roll bar to the vehicle body.
2. Insert the four Ø4x16 screws and tighten with a screwdriver.
3. Fit the back rest into the holes on the vehicle.
4. Insert two Ø4x16 screws and tighten.

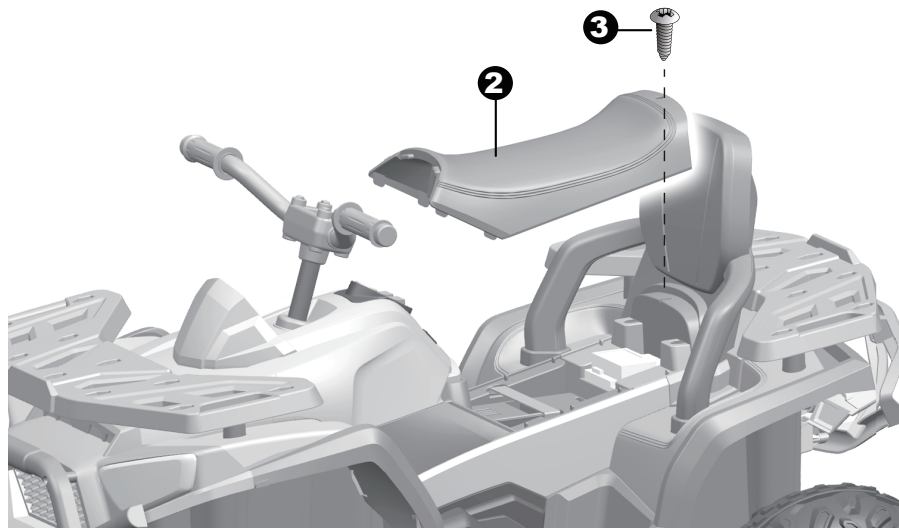
**Attach the Rear Luggage Carrier & Rear Roll Bar****E**

1. Turn the luggage carrier upside down. Fit the rear roll bar to the luggage carrier as shown.
2. Insert the two Ø4x16 screws and tighten with a screwdriver.
3. Fit the rear luggage carrier assembly over the rear of vehicle body.
4. Insert three Ø5x12 screws through the luggage carrier and into the vehicle body, tighten with a screwdriver.
5. Insert two Ø4x16 screws through the rear roll bar and into the vehicle body, and tighten with a screwdriver.

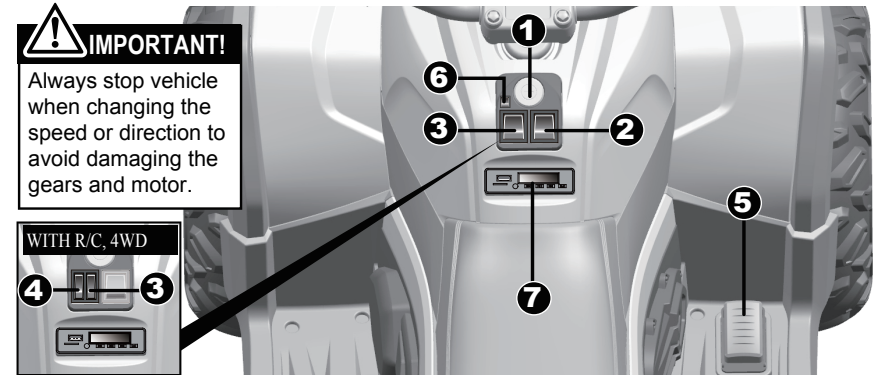
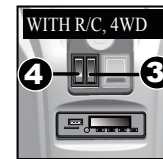


E**Connect the Power Supply & Attach the Seat***Seat inside view*

1. Plug the battery connector into the red vehicle connector as shown.
2. Fit the tabs on seat into the grooves on the vehicle.
3. Tighten a Ø4X16 screw to secure the seat to the vehicle body.

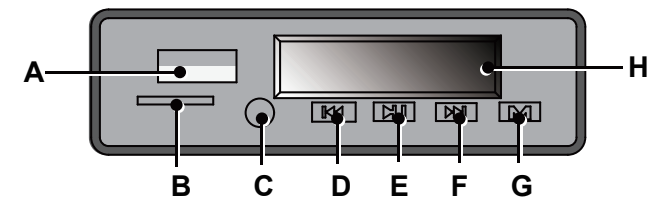
**Use your New Ride-on****F**

Always stop vehicle when changing the speed or direction to avoid damaging the gears and motor.

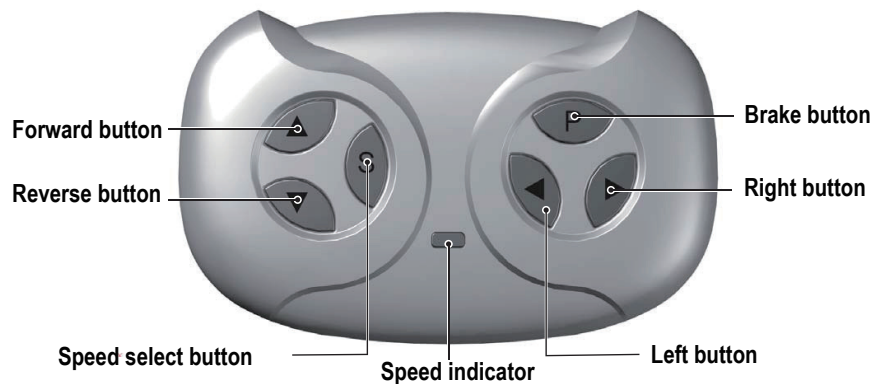


1. **Power button:** Turn the power on and off.
2. **Forward-reverse switch:** Changes the direction that vehicle moves from forward to reverse.
 - To move the vehicle forward, shift the lever to top position.
 - To move the vehicle reverse, shift the lever to down position

HINT: The vehicle is designed to operate in low speed only in reverse.
3. **High-low speed switch:** Changes the vehicle moves in high speed and low speed in forward
4. **2W/4W switch (if equipped):** Operates the vehicle to 2WD mode and 4WD mode.
5. **Foot pedal:**
 - To move the vehicle, press the pedal down.
 - To brake or slow down, release pressure from the pedal.
6. **Lights switch:** Turn the front lights on and off.
7. **Mp3 player:**



- A. USB slot
- B. TF card slot (Read mp3 format only)
- C. AUX input
- D. Previous / Increase volume
- E. Play / Pause
- F. Next / decrease volume
- G. Change the audio input (If you insert two or more audio input devices). It also controls the bluetooth (if equipped) and FM functions (if equipped).
- H. **Display screen:** It displays the power level of the battery when the vehicle stops. When the numerical value is less than 12, recharge the battery please.

F**Use the Remote Controller (IF EQUIPED)****Attach the batteries of controller**

Lift the battery compartment door on the back of the controller and insert two AAA(LR03) batteries.

HINT: Batteries not included. Refer to the Battery Information on the page 4.

1. Build connection

Long press the forward and reverse buttons for 3 seconds, and the speed indicator flashes. Then power on the vehicle, the speed indicator goes to long bright, means the connection successful. If the speed indicator no response, means the connection failed. Replace the batteries and retry.

2. Brake button

Press the button to stop the vehicle, press it again to release the brake.

3. Speed select button

The switch operates the vehicle to move in low, normal or high speed.

HINT: This switch won't work while your vehicle moves reverse.

NOTE:

- Leave the remote controller idling for about 10 seconds, it will shut down automatically.
- Rebuild connection when you replace the batteries of the remote controller.

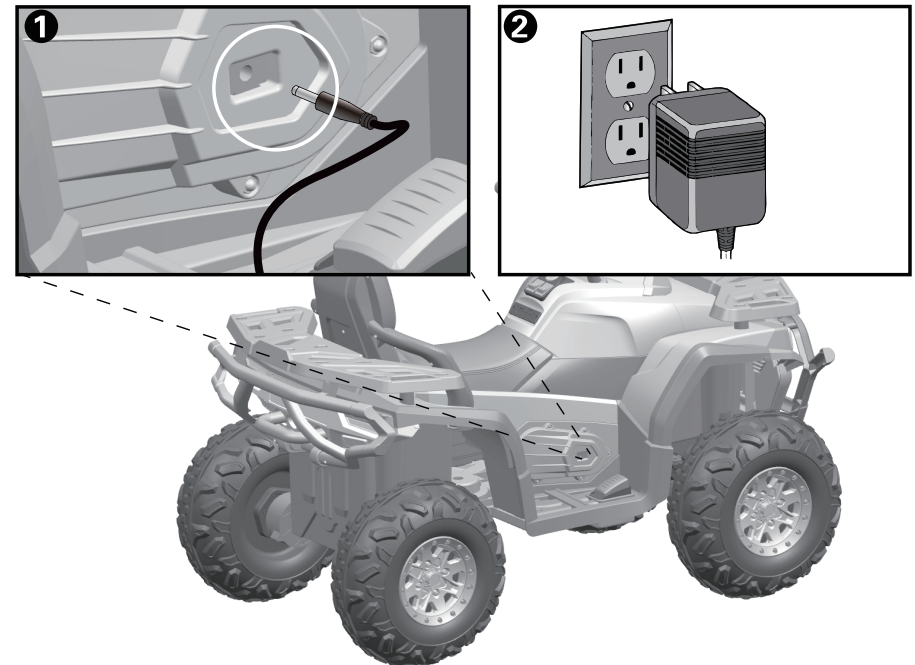
Charging**G****⚠ WARNING!**

ONLY AN ADULT CAN CHARGE AND RECHARGE THE BATTERY!

⚠ WARNING!

This product with **Charging Protection**: when charging, all functions will be cut off! Only an adult can charge and recharge the battery!

- The POWER SWITCH must be turned in **OFF** position when charging.
- Before the first use, you should charge the battery for 4-6 hours. Do not recharge the battery for more than 10 hours to avoid overheating the charger.
- When the vehicle begins to run slowly, recharge the battery.



1. Plug the charger port into the input socket. (above the foot pedal)
2. Plug the charger plug into a wall outlet. The battery will begin charging.

H

Troubleshooting Guide

Problem	Possible Cause	Solution
Vehicle does not run	Battery low on power	Recharge battery.
	Thermal fuse has tripped	Reset fuse, see <Fuse>
	Battery connector or wires are loose	Check that the battery connectors are firmly plugged into each other. If wires are loose around the motor contact your distributor please.
	Battery is dead	Replace battery, contact your distributor please.
	Electrical system is damaged	Contact your distributor please.
	Motor is damaged	Contact your distributor please.
Vehicle does not run very long	Battery is under charged	Check that the battery connectors are firmly plugged into each other when recharging
	Battery is old	Replace battery, contact your distributor please.
Vehicle runs sluggishly	Battery low on power	Recharge battery, contact your distributor please.
	Battery is old	Replace battery, contact your distributor please.
	Vehicle is overload	Reduce weight on vehicle. Maximum user weight is 110 lbs. .
	Vehicle is being used in harsh conditions	Avoid using vehicle in harsh conditions ,see <Safety>.
Vehicle needs a push to go forward	Poor contact of wires or Connectors	Check that the battery connectors are firmly plugged into each other. If wires are loose around the motor, contact your distributor please.
	"Dead Spot" on motor	A dead spot means the electric power is not being delivered to the terminal connection and the vehicle needs repair. Contact your distributor please.
Difficult shifting from forward to reverse or vice-versa	Attempting to shift while the vehicle is in motion	Completely stop the vehicle and shift, see <Use Your New Vehicle>
Loud grinding or clicking noises coming from motor or gear box	Motor or gears are damaged	Contact your distributor please.
Battery will not recharge	Battery connector or adapter connector is loose	Check that the battery connectors are firmly plugged into each other.
	Charger not plugged in	Check that the battery charger is plugged into a working wall outlet.
	Charger is not working	Contact your distributor please.
Charger feels warm when recharging	This is normal and not a cause for concern	

Completely read through this manual and the troubleshooting guide table before calling. If you still need help resolving the problem **Contact your distributor please.**

I

Maintaining

- It is parents' responsibility to check main parts of the toy before using, must regularly examine for potential hazard, such as the battery, charge,cable or cord, plug, screws are fastening enclosure of other parts and that in the event of such damage, the toy must not be used until that damage had been properly removed.
- Make sure the plastic parts of the vehicle are not cracked or broken.
- Occasionally use a lightweight oil to lubricate moving parts such as wheels.
- Park the vehicle indoors or cover it with a tarp to protect it from wet weather.
- Keep the vehicle away from sources of heat, such as stoves and heaters. Plastic parts may melt.
- Recharge the battery after each use. Only an adult can handle the battery. Recharge the battery at least once a month when the vehicle Raider is not being used.
- Do not wash the vehicle with a hose. Do not wash the vehicle with soap and water. Do not drive the vehicle in rainy or snowy weather. Water will damage the motor, electric system and battery.
- Clean the vehicle with a soft, dry cloth. To restore shine to plastic parts, use a non-wax furniture polish. Do not use car wax. Do not use abrasive cleaners.
- Do not drive the vehicle in loose dirt, sand or fine gravel which could damage the moving parts, motors or the electric system.
- When not using, all the electrical source should be turn off. Turn off the power switch and disconnect the battery connection.

J

Fuse

The battery features a thermal fuse with a reset fuse that will automatically trip and cut all power to the vehicle if the motor, electric system or battery is overloaded. The fuse will reset and power will be restored after the unit is turned OFF for 20 seconds and then turned ON again. If the thermal fuse trips repeatedly during normal use, the vehicle may need repair. **Contact your distributor please.**

To avoid losing power, follow these guidelines:

- Do not overload the vehicle.
- Do not tow anything behind the vehicle.
- Do not drive up steep slopes.
- Do not drive into fixed objects, which may cause the wheels to spin, causing the motor to overheat.
- Do not drive in very hot weather, components may overheat.
- Do not allow water or other liquids to come in contact with the battery or other electric components.
- Do not tamper with the electric system. Doing so may create a short-circuit, causing the fuse to trip.

Disposal Of Battery



- Your sealed lead-acid battery must be recycled or disposed of in an environmentally sound manner.
- Do not dispose of your lead-acid battery in a fire. The battery may explode or leak.
- Do not dispose of a lead-acid battery in your regular, household trash. The incineration, land filling or mixing of sealed lead-acid batteries with household trash is prohibited by law.

Our products are suitable for ASTM F963; GB6675; EN71 and EN62115 standard.