

# 142.5X210MM

## 30 Gallon Gas Caddy

### OWNER'S MANUAL



**⚠ WARNING! CAUTION!**  
Read carefully and understand all ASSEMBLY AND/OR OPERATION INSTRUCTION before using the product. Failure to follow the safety rules and other basic safety precautions may result in serious personal injury.

### owner's manual

Thank you for purchasing our product.  
This manual covers operation and maintenance information about the product. Read carefully and understand all instruction before using the product.  
All information in this publication is based on the latest product information available at the time of approval for printing.  
We reserve the right to make changes at any time without notice and without any obligation.

#### Table of Contents

Safety Instruction	03
Parts and Features	04
Assembly Guide	06

2

### owner's manual

#### IMPORTANT SAFETY INSTRUCTION

##### READ THIS MANUAL CAREFULLY BEFORE INSTALLING, OPERATING OR SERVICING

- When using this product, basic precautions should always be followed, including the following:
- This product is not intended for use by persons (including children) with reduced physical, sensory or mental capabilities, or lack of experience and knowledge, unless they have been given supervision or instruction concerning using the product by a person responsible of their safety.
  - Do not use this product other than intended use.
  - Wear proper protection equipment when installing or using this product.
  - Ensure all fittings and threaded connections are tightened and leak free before operating.

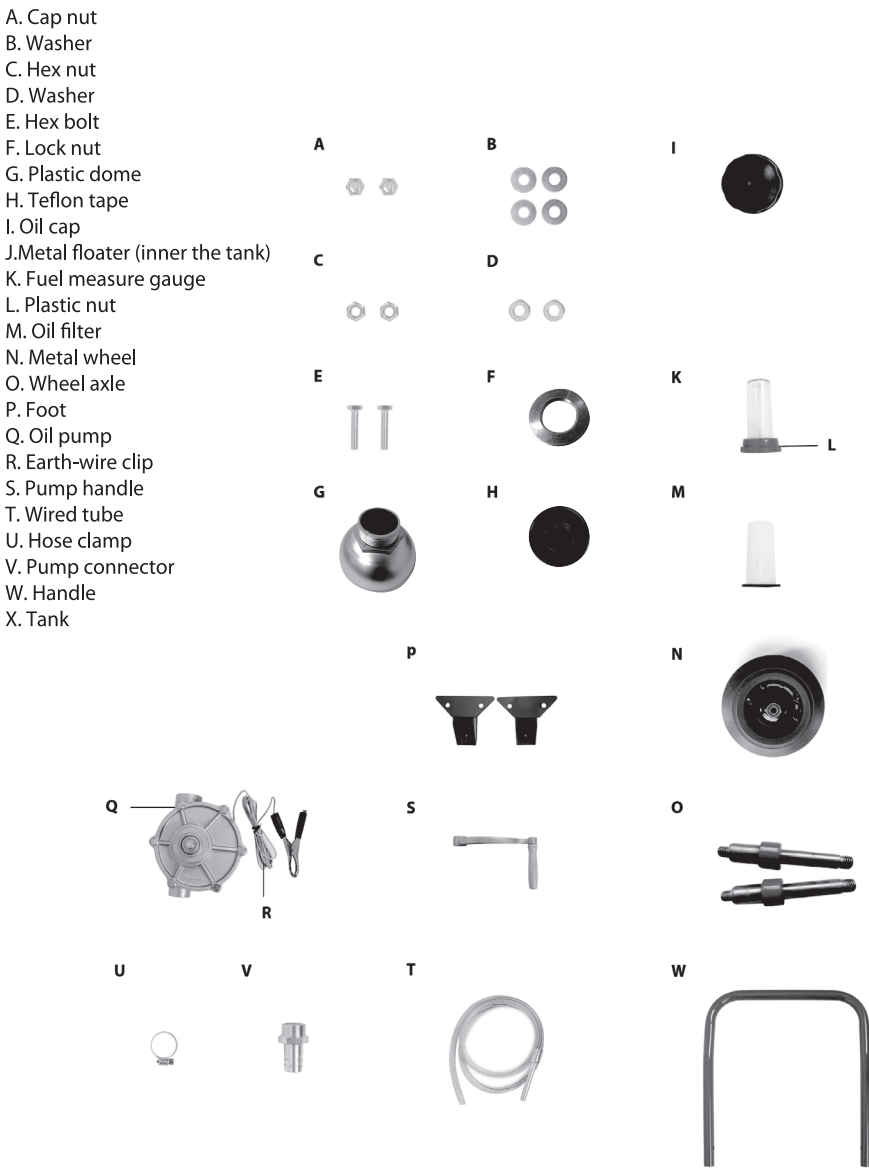
- ⚠ DANGER!**  
Gasoline and other fuels are extremely flammable. Keep away from heat sparks, and open flame.
- Do not use electronics or mobile communications devices such as mobile phones when pumping flammable liquids.
  - Attach ground wire and bond containers that are being pump from and into. Ground all containers to a known ground source to dissipate static electricity before pumping liquids.
  - Gasoline vapors can expode. Harmful or fatal if swallowed. Avoid breath in fuel vapors.
  - Do not smoke near or while using the gas caddy.
  - This product is intended for fuel transfer only and is not intended to be used to transport fuel in any vehicle or trailer.
  - Do not modify this product.

- ⚠ WARNING! CAUTION! ATTENTION!**
- Do not use this product for proplonged fuel storage.
  - Use caddy for one type of fuel only to avoid possible damage.
  - Monitor flow rate and fill level to prevent overflows and spills.
  - Always empty the pump and hose after using the caddy. Lift the hose and turn the handle to the opposite direction to empty all remaining liquid back into the caddy.
  - Caution when filling the caddle through the fill tube. Monitor closely to prevent overflows or spills.

3

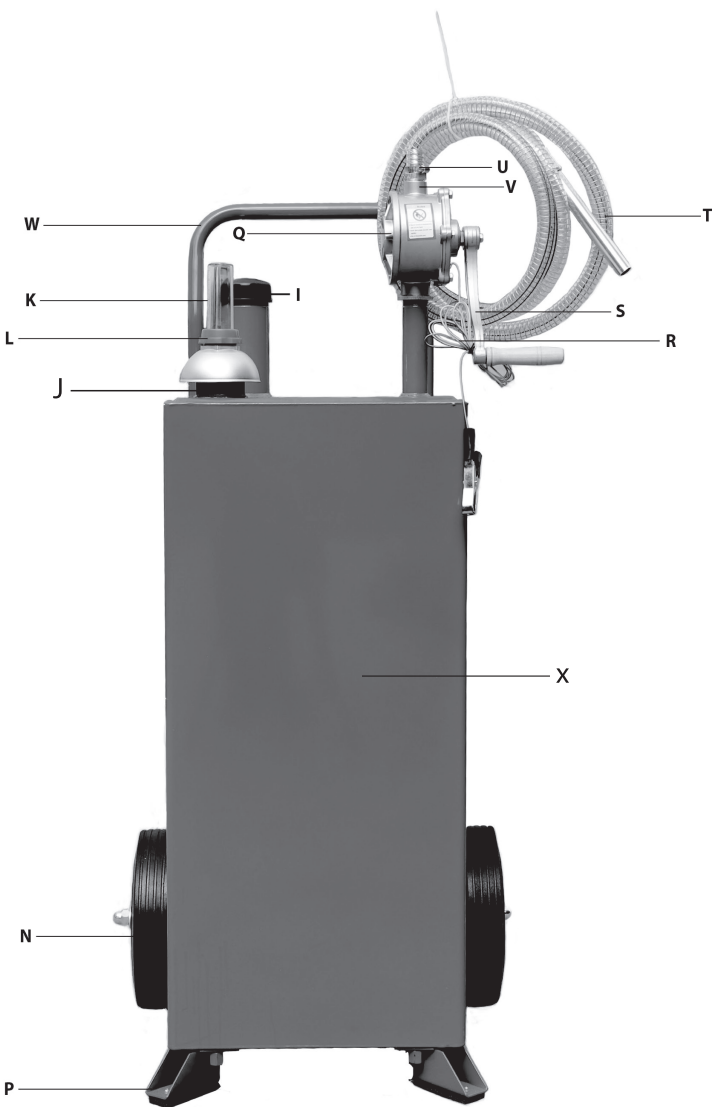
### owner's manual

#### PARTS AND FEATURES



4

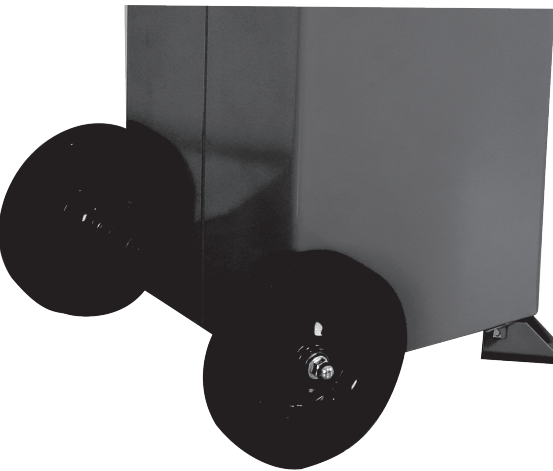
### owner's manual



5

### owner's manual

#### ASSEMBLY GUIDE



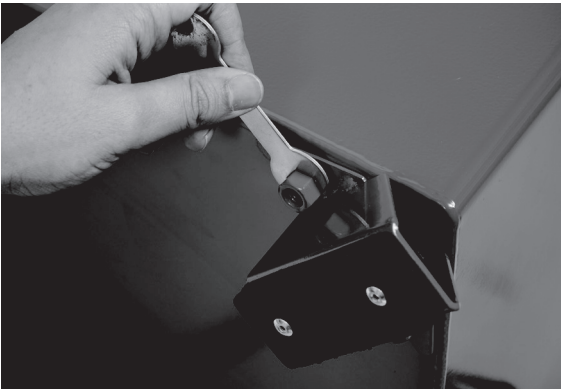
**STEP 1**  
Insert the wheel axle (O) to the caddy. Secure the axle in place with washers (B).



**STEP 2**  
Put the Metal wheel to the end of the wheel axle. Secure it in place with washer (B) and cap nut (A). Repeat the same step for the other wheel.

6

### owner's manual



**STEP 3**  
Tilt the caddle on its side. Remove the hex but attached at the bottom of the caddy. Attach the foot (P) in place and secure by tightening the removed nut.



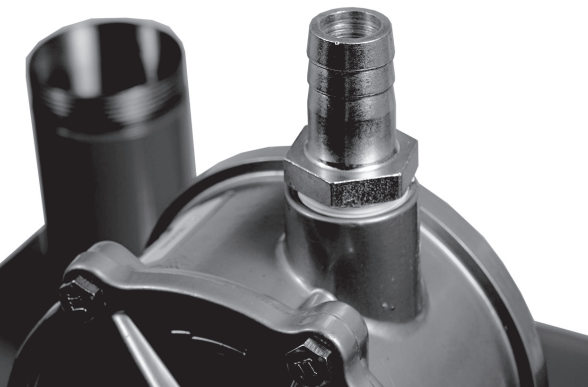
**STEP 4**  
Screw the oil pump on (Q) the pump pipe. Make sure they are aligned before screwing to prevent cross threading.

7

### owner's manual



**STEP 5**  
Attach the pump handle (S) to the oil pump. Please must be in correct postion before turning to aviod to damage thread



**STEP 6**  
Screw pump connector (V) to the oil pump. Careful to prevent cross threading.

8

### owner's manual



**STEP 7**  
Attach the wired tube (T) to the pump connector. Secure it in place by tightening the hose clamp (U).



**STEP 8**  
Screw the fuel measure gauge (K) to the gas caddy and tighten the plastic nut (L).

9

### owner's manual



**STEP 9**  
Insert the oil filter (M) into the oil inlet then cover it with the fuel cap (I).

10

### owner's manual



**STEP 10**  
Attach the handle (W) to the caddy. Secure it in place with hex bolts (E), washer (D), and hex nut (C).

11