

Rice Robot



CERAMIC NONSTICK
MADE WITHOUT PFOA • PTFE • PFOS

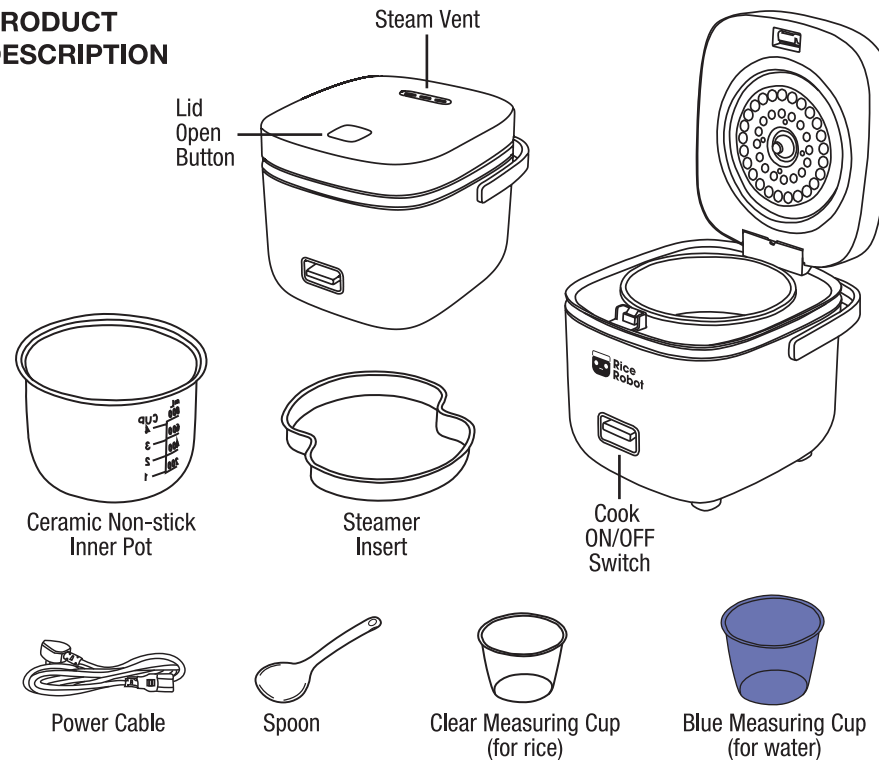
READY
**SET
RICE!**

the cooker that knows
when it's ready!

- EASY TO USE
- AUTOMATIC KEEP WARM
- MAKES UP TO 4.5 CUPS OF COOKED FOOD



PRODUCT DESCRIPTION



IMPORTANT SAFEGUARDS

When using electrical appliances, basic safety precautions should always be followed. Please read the safeguards below before using your product.

1. Read all instructions.
2. Caution is needed when opening the rice cooker as built up steam may be quickly released.
3. To protect against electrical shock do not immerse the cord, plug, or appliance in water or other liquids.
4. Keep this appliance away from children.
5. The appliance is not intended for use by persons (including children) with reduced physical, sensory or mental capabilities, or lack of experience and knowledge, unless they have been given supervision or instruction concerning use of the appliance by a person responsible for their safety. Children should be supervised to ensure that they do not play with the appliance.
6. Unplug from outlet when not in use and before cleaning. Allow the inner pot to cool off completely before removing it from the appliance.
7. Do not operate any appliance with a damaged cord or plug or after the appliance malfunctions or has been damaged in any manner. Return the appliance to the nearest authorized service facility for examination, repair or adjustment.
8. The use of accessory attachments is not recommended by the appliance manufacturer as they may cause injuries.
9. Do not place any objects on top of the appliance and over the steam vent during operation.

10. While the appliance is in operation, do not touch the steam vent and be careful of hot steam being ejected when opening the lid to avoid burn.
11. Always place the appliance on a firm and level surface.
12. The heat element surface is subject to residual heat after use.
13. **WARNING:** Do not fill water higher than the level which is indicated in the inner pot to avoid water overflow.
14. Do not let the cord hang over edge of table or counter, or touch hot surfaces.
15. Do not let the power cord touch or be close to a steam vent. It will damage the insulation layer of wires.
16. Do not operate the appliance without any food or liquid inside.
17. Extreme caution must be used when moving an appliance containing hot liquids.
18. Always attach the plug to appliance first, then plug the cord into the wall outlet.
19. Do not use appliance for anything other than intended use.
20. Do not use outdoors.
21. Do not immerse in water.
22. **CAUTION:** The rice cooker will remain on "Keep-Warm" until it is unplugged from the power outlet. It is not recommended to leave rice on "Keep-Warm" mode for more than 3 hours.

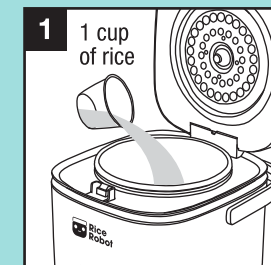
FOR HOUSEHOLD USE ONLY

UNPACKING - BEFORE FIRST USE

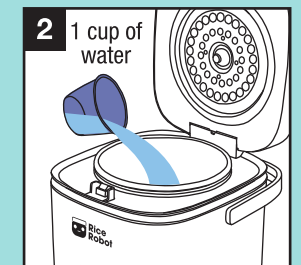
Unpack the unit and all parts and remove all packaging materials. Before using the Rice Robot for the first time, wipe the surface of the appliance with a damp cloth. Rinse the inner pot, steamer, spoon and both measuring cups in warm soapy water prior to use. Dry all parts thoroughly. Refer to a full cleaning instructions if needed. **WARNING:** Do not immerse the Rice Robot unit and power cable in water or any other liquid. Do not use abrasive cleansers.

USAGE

Important: Make sure the inner pot is inserted into the appliance.
The inner pot has to be in full contact with the heating plate.
To ensure that, slightly rotate it a few times.



• Fill the clear measuring cup (included) with rice and add it into the inner pot. One cup of dry rice will make about 3 cups of cooked rice.
Note: If your rice needs rinsing, do so in a separate container first. Drain all the water.



• Fill the blue measuring cup (included) with water and add it into the inner pot.
• Stir the rice and water to make sure the rice is distributed evenly in the inner pot.

INSTRUCTIONS



OATMEAL



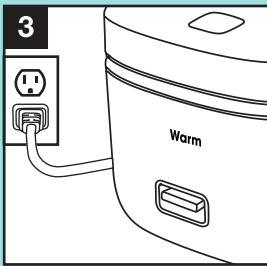
MAC & CHEESE



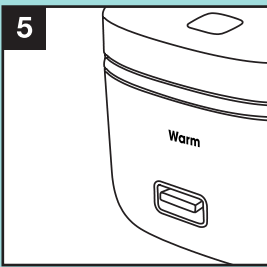
VEGETABLES



POULTRY & SEAFOOD

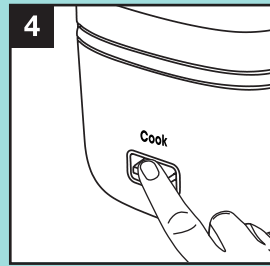


- Press to close the cover until it clicks.
- Plug one end of the power cord into the rice cooker and the other end with the plug into the power outlet.
- **Warm** indicator light will automatically turn on.

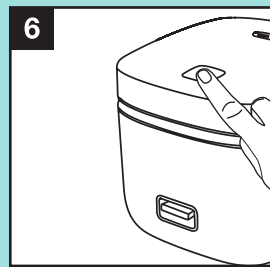


- After the cooking process is completed, **Warm** indicator light will automatically turn on.
- **Warm** will be displayed on the unit indicating the food will be kept warm until you unplug the appliance.

- Use the provided spoon to remove the rice from the inner pot.
- Let the appliance fully cool down before removing the inner pot.

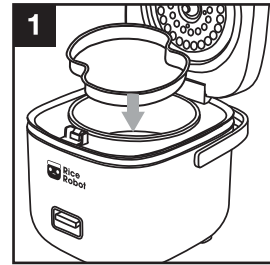


- Press the Power switch down to start cooking rice.
- **Cook** indicator light will be displayed on the unit during the cooking process.



- Unplug the appliance and let it cool down slightly.
- Press the Open button to open the lid. Using pot holders, fully open the lid.
- **CAUTION: Be careful of hot steam being ejected when opening the lid to avoid burn.**

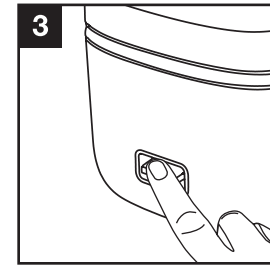
USING STEAMER INSERT



Once you add rice and water to the inner pot, place the steamer insert on top.



Add food to be steamed to the insert. Make sure it is not filled higher than the top edge.



- Close the lid and press the Power switch down to start cooking.
- **Cook** indicator light will be displayed on the unit during the cooking process.

CLEANING

IMPORTANT: Unplug the rice cooker prior to cleaning. Always allow the unit to fully cool before cleaning.

INNER POT AND STEAMER INSERT:

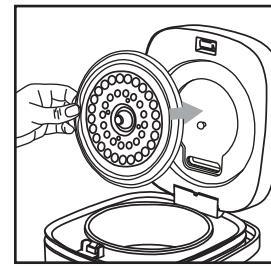
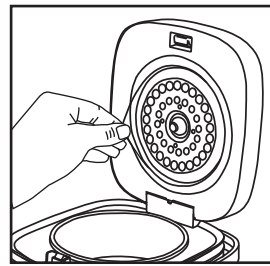
Inner Pot and Steamer Insert are dishwasher safe. You may also wash both in warm soapy water. Do not use any abrasive cleaners. Dry thoroughly.

UNIT AND HEATING ELEMENT:

Wipe the inside and outside of the rice cooker with a damp cloth. Dry thoroughly.

INNER LID INSERT:

1. Pull to remove the inner lid insert. See Diagram below.
2. Wash the lid insert in warm soapy water. Do not use any abrasive cleaners. Dry thoroughly.
3. Place it back and pop it in.



SPECIFICATIONS

Rated voltage and frequency: AC 110V/120V – 50Hz

Input power: 200W

Rated capacity of rice: approximately 0.8L

Product dimensions (W x H x D): 7" x 7.8" x 7" (180 x 200 x 180mm)

Product Weight: 2.8lbs (1.3kg)