

HAMPTON BAY®

Item #1002 665 130 / 1002 563 390

1002 563 392

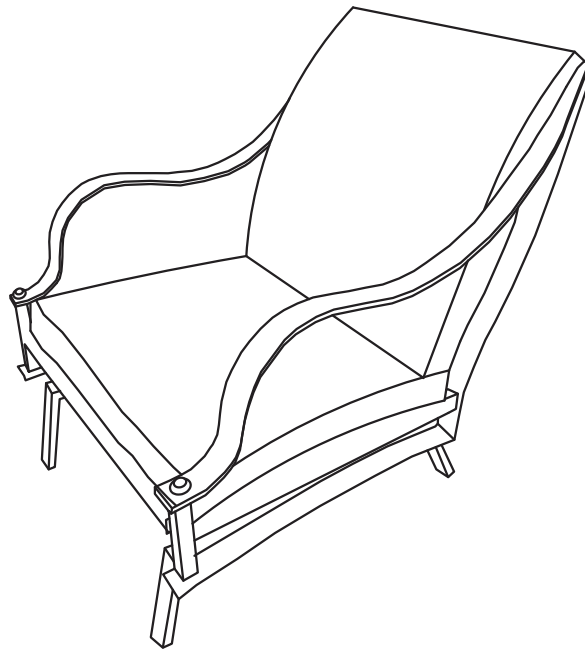
0000 000 000 / 0000 000 000

Model #FG-TUL5PCCM / FG-TUL5PCFCCMBR

FG-FG-TULCM2PKG / FG-TULCMB2PK

USE AND CARE GUIDE

HIGHLAND POINT SPRING CLUB CHAIR



Questions, problems, missing parts? Before returning to the store,
call Hampton Bay Customer Service
8 a.m. – 7 p.m., EST, Monday – Friday, 9 a.m. – 6 p.m., EST, Saturday

1-855-HD-HAMPTON

HAMPTONBAY.COM

THANK YOU

We appreciate the trust and confidence you have placed in Hampton Bay through the purchase of this chair. We strive to continually create quality products designed to enhance your home. Visit us online to see our full line of products available for your home improvement needs. Thank you for choosing Hampton Bay!

Table of Contents

Table of Contents	2	Hardware Included	4
Safety Information	2	Package Contents	5
Warranty	3	Assembly	6
What is Covered	3	Care and Cleaning	9
What is Not Covered	3		
Pre-Assembly	4		
Planning Assembly	4		

Important Safety Instructions

SAVE THESE INSTRUCTIONS

READ ALL INSTRUCTIONS BEFORE USE

To reduce the risk of injury to persons:

1. Close supervision is necessary when this furnishing is used by or near children, or disabled persons, if applicable.
2. Use this furnishing only for its intended use as described in these instructions. Do not use attachments not recommended by the manufacturer.



DANGER: Please keep children out of the assembly area at all times.



WARNING: Pay attention to clamp hands during installation.



IMPORTANT: Please check the tightness of the bolts at least every 90 days.

Warranty

THIS IS A RESIDENTIAL WARRANTY AND DOES NOT APPLY FOR COMMERCIAL USE.

5 YEAR LIMITED WARRANTY

WHAT IS COVERED

Residential use of this furniture is warranted for a five (5) year limited warranty period for the frame construction. The warranty is valid from the date of purchase and applies only to the original purchaser. If your Hampton Bay outdoor furniture fails structurally during normal use (other than damage as a result of dropping or breaking a cast part) within five (5) years of purchase, the manufacturer will repair or replace the frame at its discretion with the same or similar product if the original product is discontinued, at no charge. Cushions are warranted for a one (1) year period against seams separating or tearing. Fabric is covered under the 3 year limited warranty. The finish is warranted against peeling, cracking or blistering for a period of one (1) year provided the product has not been scratched or abraded. Scratches and chips resulting from normal wear and tear are not covered. Straps and/or wicker weave are warranted for a period of one (1) year against separation or tearing. Fading of the finish, straps and/or wicker weave resulting from exposure to elements is not covered. Stains as a result of chemical spills and certain food items are not covered.

WHAT IS NOT COVERED

The following are expressly excluded from warranty coverage: failure caused by unreasonable or abusive use; furniture that was sold as clearance items, display models, or items purchased in "as is" condition; freight damage; furniture damaged by acts of nature, vandalism, fire, abuse, lack of proper care and maintenance, or improper assembly; normal fading of straps and fabric; discoloration of frame or fabric from exposure to elements, oils, spills, fluids or chemicals; table top breakage; hardware corrosion or rusting; buckling or splitting of tubing resulting from exposure to water and freezing temperatures; glass table tops; purchased or replacement parts; and plastics. Also excluded from warranty coverage is lost time of use and/or money, inconvenience, travel, packaging, or any other consequential or incidental damages. In no event shall the manufacturer's responsibility exceed the value of the replacement product. Warranty is to the original purchaser when items are purchased from one of our authorized retailers, and is not transferable. All warranty claims must be submitted with a dated register receipt within the warranty period. Should replacement of the warranted item be unavailable, the manufacturer reserves the right to substitute items of its choice similar in style, color and quality. For quality control purposes and verification, we reserve the right to request photographs of the damaged item(s). The terms of this warranty are subject to change without notice. Shipping and handling charges are at all times the responsibility of the claimant. We do not ship outside of the North American continent.

Contact the Customer Service Team at 1-855-HD-HAMPTON or visit www.Hamptonbay.com.

Pre-Assembly

PLANNING ASSEMBLY

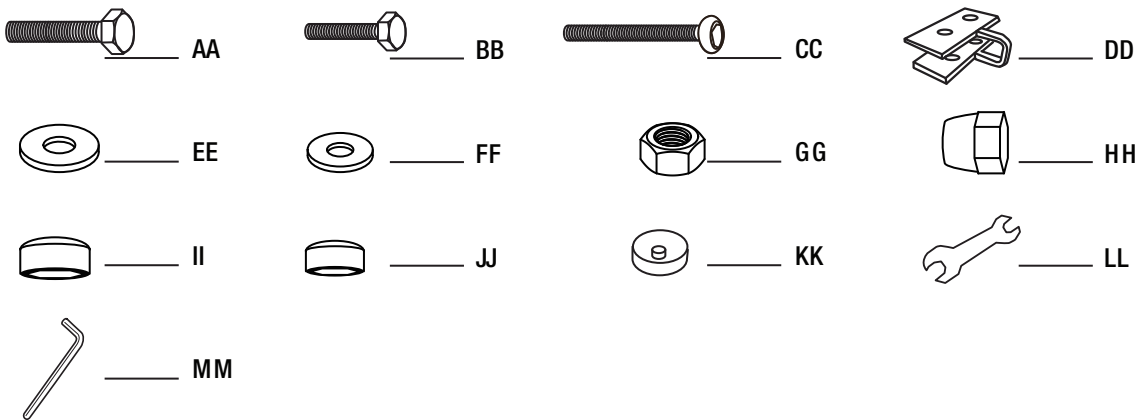
It will take one or two people about 25 minutes to complete the assembly process.

PLEASE READ COMPLETE INSTRUCTION MANUAL PRIOR TO ASSEMBLY! Identify all parts packed in the carton against the parts list. Remove all protective materials and place the parts on a nonabrasive surface to avoid scratching.

HARDWARE INCLUDED



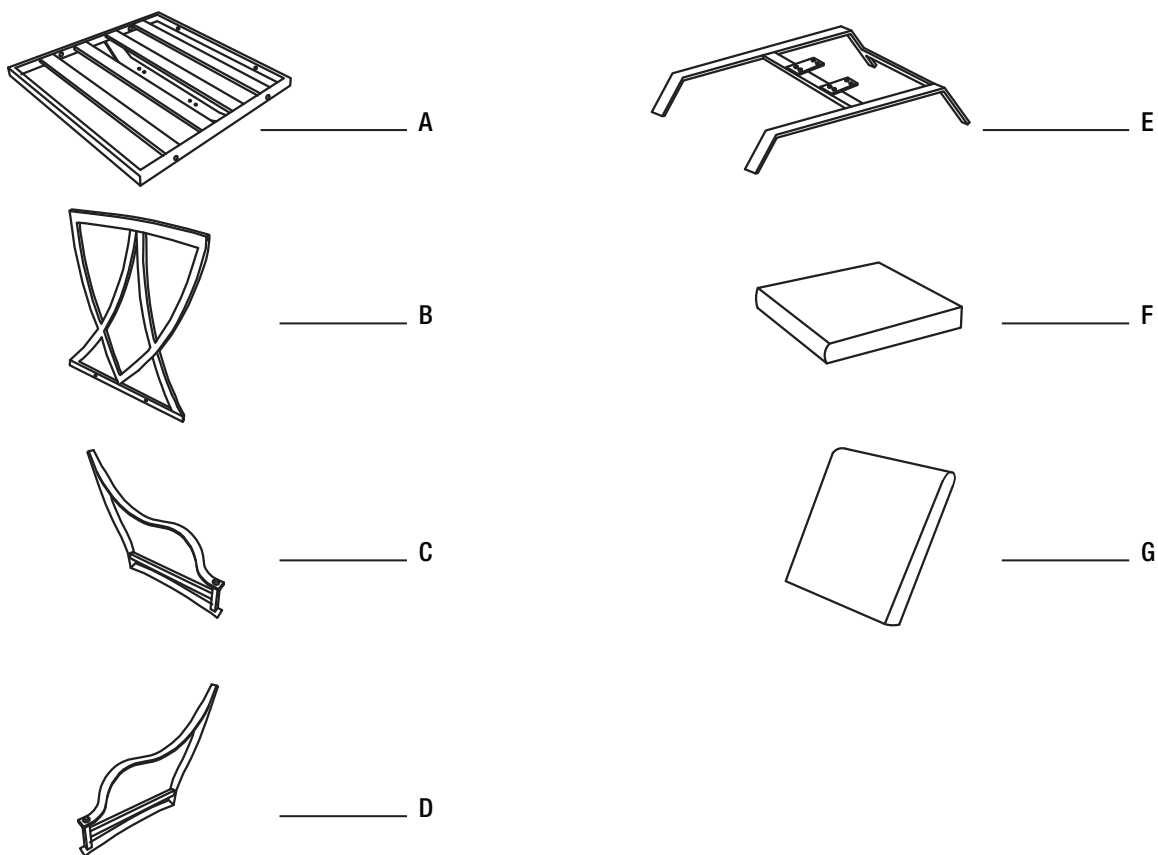
NOTE: Hardware not shown to actual size.



Part	Description	Quantity	Property Class
AA	M8x40 Hex Bolt	4	4.8
BB	M6x30 Hex Bolt	6	4.8
CC	M6x55 Socket Bolt	2	8.8
DD	C Clamp Plate (50x55x30)	2	4.8
EE	d8xD16x1 Flat Washer	8	4.8
FF	d6xD12x1 Flat Washer	8	/
GG	M8 Nut	4	/
HH	M8 Nut Cap	4	/
II	M8 Hex Bolt Cap	4	/
JJ	M6 Hex Bolt Cap	6	/
KK	Socket Bolt Cap	2	/
LL	Hex Wrench	2	/
MM	Hex Screw Driver	1	/

Pre-Assembly (continued)

PACKAGE CONTENTS



Part	Description	Quantity
A	Seat frame	1
B	Back frame	1
C	Right arm frame	1
D	Left arm frame	1
E	Base frame	1
F	Seat cushion	1
G	Back cushion	1

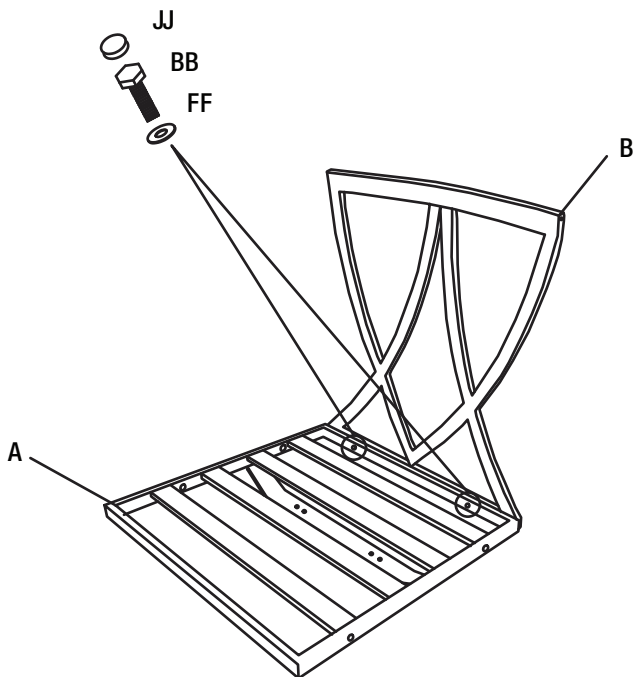
Assembly

1 ATTACHING THE SEAT FRAME TO THE BACK FRAME

- Remove all the protective material carefully. Avoid cutting the surface of the furniture while removing the packaging material on all components.
- Place the Seat Frame (A) on a soft, flat non-abrasive surface.
- Loosely attach the Back Frame (B) to the Seat Frame (A) with the M6x30 Hex Bolts (BB) and d6xD12x1 Flat Washers (FF). Do not put the M6 Hex Bolt Caps (JJ) on the M6x30 Hex Bolts (BB) until the assembly is complete.

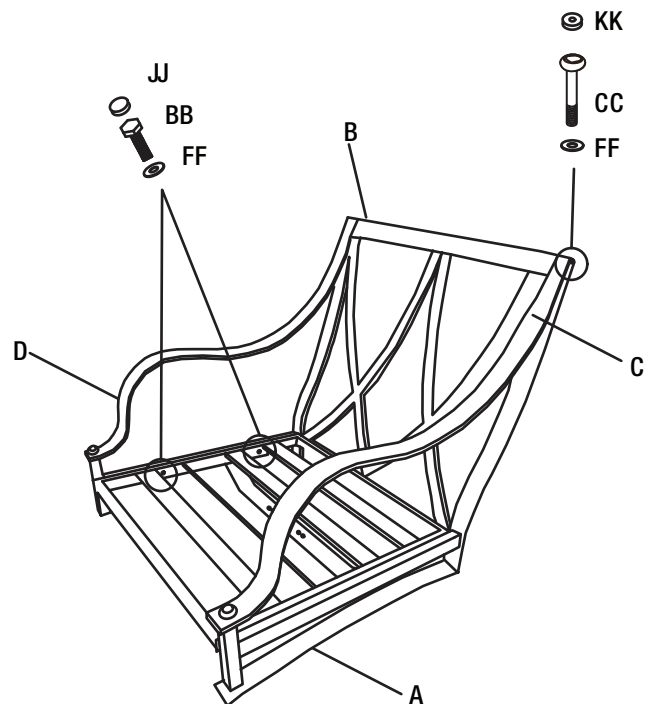


NOTE: Do not tighten bolts completely until assembly is complete.



2 ATTACHING THE LEFT AND RIGHT ARM

- Loosely attach the Left Arm Frame (D) to the Seat Frame (A) using the M6x30 Hex Bolts (BB) and d6xD12x1 Flat Washers (FF).
- Loosely attach the Left Arm Frame (D) to the Back Frame (B) by aligning the bolt holes in the Left Arm Frame (D) with the bolt holes in the Back Frame (B) and securing with the M6x55 Socket Bolts (CC) and d6xD12x1 Flat Washers (FF).
- Repeat the same process above to attach the Right Arm Frame (C) to Seat Frame (A) and Back Frame (B).
- Once all the bolts are in place, securely tighten all the M6x30 Hex Bolts (BB) with the Hex Wrench (LL) and tighten all the M6x55 Socket Bolts (CC) with the Hex Screw Driver (MM). Do not put the M6 Hex Bolt Caps (JJ) and Socket Bolt Caps (KK) on the bolts until all assembly is complete.



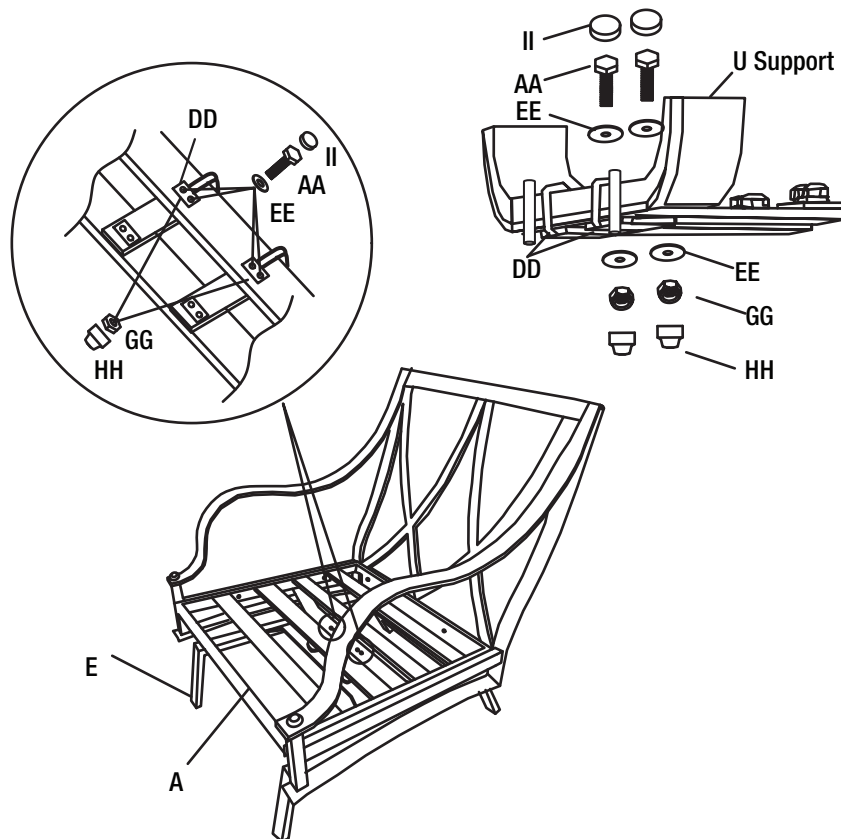
Assembly (continued)

3 ASSEMBLING THE BASE TO THE CHAIR SEAT

- Place the Chair Seat (A) on a non-abrasive flat surface. Align the holes on the support bar on the underside of the chair seat with the holes on the Spring Plates which are pre-attached to the chair base. Insert the M8x40 Hex Bolts (AA) through the d8xD16x1 Flat Washers (EE), C Clamp Plates (DD), Support Bar, Spring Plates and the C Clamp Plates (DD) as showed in the diagram. Secure the M8x40 Hex Bolts (AA) with M8 Nuts (GG). The support bar and spring plate should be sandwiched in between the C Clamp Plates (DD). See figure.
- Once all the M8 Nuts (GG) and M8x40 Hex Bolts (AA) are in place, securely tighten all the M8x40 Hex Bolts (AA) and M8 Nuts (GG); including the ones at the front part of the rocker mechanism with the Hex Wrench (LL).
- Cover all the M8 Nuts (GG) with M8 Nut Caps (HH) and all the M8x40 Hex Bolts (AA) with M8 Hex Bolt Caps (II).
- Test the rocker gently. If the rocker does not rock properly, double check the assembly procedure and make sure it is assembled correctly.



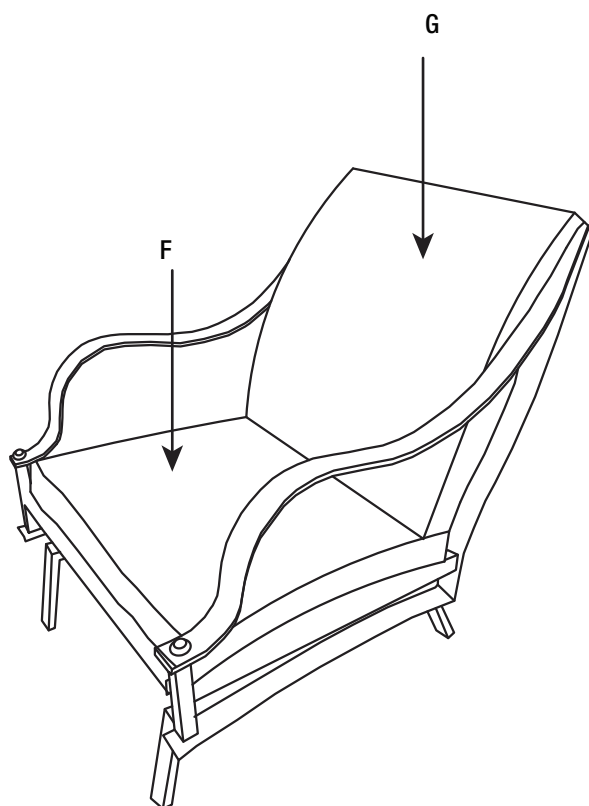
CAUTION: Improper assembly may result in serious personal injury.



Assembly (continued)

4 PLACING THE CUSHION ON THE CHAIR

- Place the Seat Cushion (F) and the Back Cushion (G) on the chair. See Figure.
- The Chair is ready for your enjoyment.
- Repeat steps 1-4 to assemble the other chairs.



Care and Cleaning

Clean the furniture frame with a wet towel using a mild soap and water solution. Dry completely with a soft towel. Clean the cushions and the sling seat material with a mild solution of soap and water. Hang cushions to drip dry completely. It is recommended that cushions be stored in a dry area during rain and if they are not in use and in direct sunlight. Should your cushions be left out in the rain, please position them in the upright vertical position to allow them to drain and dry completely before use. Do not machine wash or dry. Do not use bleach or strong solvents to clean any of your patio furniture. It will harm both fabrics and metal finishes. Caution should be used when using oils, lotions and other chemicals such as chlorine or repeated exposure to extreme weather conditions (including heat), which may cause permanent discoloration to the fabric. To maintain and protect the furniture, always cover it with an outdoor furniture cover or store in a safe dry area when not in use for long periods of time.

You may contact our customer service department with any questions by phone at 1-855-HD-HAMPTON or visit www.hamptonbay.com.

HAMPTON BAY®

Questions, problems, missing parts? Before returning to the store,
call Hampton Bay Customer Service
8 a.m. – 7 p.m., EST, Monday – Friday, 9 a.m. – 6 p.m., EST, Saturday

1-855-HD-HAMPTON

HAMPTONBAY.COM

Retain this manual for future use.