



INSTALLATION INSTRUCTIONS
READ AND SAVE THESE INSTRUCTIONS
Air-O® Value Series Range Hoods

Warning: TO REDUCE THE RISK OF FIRE OR ELECTRICAL SHOCK, DO NOT USE THIS FAN WITH ANY SOLID-STATE SPEED CONTROL.

Warning: TO REDUCE THE RISK OF FIRE, ELECTRICAL SHOCK, OR INJURY TO PERSONS, OBSERVE THE FOLLOWING:

- A. Use this unit only in the manner intended by the manufacturer. If you have questions, contact the manufacturer.
- B. Before servicing or cleaning the unit, switch power to "OFF" at the service panel and lock the service, disconnecting means to prevent power from being switched on accidentally. When service-disconnecting means cannot be locked, securely fasten a prominent warning device, such as a tag to service panel.

Caution: For general ventilation only. Do not use to exhaust hazardous or explosive material or vapors.

Warning: TO REDUCE THE RISK OF A RANGE TOP GREASE FIRE:

- A. Never leave surface units unattended at high settings. Boilovers cause smoking and greasy spillover that may ignite. Heat oils slowly on low / medium settings.
- B. Always turn ON when cooking at high heat or when flambeing foods (i.e. Crepes Suzette, Cherries Jubilee, Peppercorn Beef Flambe').
- C. Clean ventilating fans frequently. Grease should not be allowed to accumulate on fan or filter.
- D. Use proper pan size. Always use cookware appropriate for the size of the surface element.

Warning: TO REDUCE THE RISK OF INJURY TO PERSON IN THE EVENT OF A RANGE TOP GREASE FIRE, OBSERVE THE FOLLOWING:

- A. SMOTHER FLAME with a close fitting lid, cookie sheet or metal tray, then turn burner off. BE CAREFUL TO PREVENT BURNS. IF the flames do not go out immediately, EVACUATE AND CALL THE FIRE DEPARTMENT.
- B. NEVER PICK UP A FLAMING PAN. YOU MAY GET BURNED!
- C. DO NOT USE WATER, including wet dish clothes and towels; a violent steam explosion will result.
- D. Use extinguisher, ONLY if:
 - 1. You know you have a class ABC extinguisher, and you know how to operate it.
 - 2. The fire is small and contained in the area where it started.
 - 3. The fire department is being called.
 - 4. You can fight the fire with your back to an exit!

Warning: TO REDUCE THE RISK OF FIRE, ELECTRICAL SHOCK, OR INJURY TO PERSON, OBSERVE THE FOLLOWING:

- A. Installation work and electrical wiring must be done by qualified person(s) in accordance with all applicable codes and standards, including fire-rated construction codes and standards.
- B. Sufficient air is needed for proper combustion and exhausting of gases through the flue (chimney) of fuel burning equipment to prevent back drafting. Follow the heating equipment manufacturer's guideline and safety standards, such as those published by the National Fire Protection Association (NFPA), and the American Society for Heating, Refrigeration, and Air Condition Engineers (ASHRAE) and the local code authorities.
- C. When cutting or drilling into wall or ceiling, do not damage electrical wiring and other hidden utilities.
- D. Ducted fans must always be vented to the outdoors.

Warning: TO REDUCE THE RISK OF FIRE, USE METAL DUCTWORK ONLY!

Caution: To avoid fire, electrical shock, or injury, turn off circuit breaker to power supply before servicing. Switches are the rocker style switches. The light switch is an "ON", "OFF" switch. The motor switch, also a rocker style, is a 2-speed switch with a "LOW SPEED" to the left and "HIGH SPEED" to the right. The aluminum filter should be removed frequently and washed in hot detergent water. Rinse in clear, warm water and shake off excess moisture before replacing. The charcoal filter should not be washed, but may be wiped off periodically with a damp cloth. This filter should be replaced every six months! In cleaning, never use scouring powder or steel wool pads, as this will mar the finish. Remove filter and motor assembly for frequent cleaning. Clean entire hood and filter with hot water and mild household detergent. Exercise care when using cleaning agents or detergents due to possible deterioration of electrical components of the fan. All repair work should be done by qualified personnel. Should replacement parts be required refer to the Air-O-Hood model number and appropriate part number in all correspondence. Air-O range hoods are either ducted or ductless. Ducted Air-O hoods, with aluminum filter come with either a round, rectangular, or EZV models (1200, 1600, 500 EZV, 1600EZV). Ductless Air-O-Hoods with charcoal filters are re-circulating models (500 EZV, 1600 EZV, or 1700). Ducted Air-O Hoods require outside venting. When venting to the outside, make sure the duct run is as short as possible. Try to avoid the use of elbows in the duct run. Use duct tape on all joints! Do not use a duct smaller than discharge on the hood. Discharged air must be directed to the building's exterior.

CAUTION – To reduce the risk of fire and to properly exhaust air, be sure to duct air outside – Do not vent exhaust air into spaces with in walls or ceilings or into attics, crawl spaces, or garages.

CAUTION – To reduce the risk of fire and electric shock, install this range hood only with Integral Blowers manufactured by UMI for the model you have.

Caution: Turn off electrical power first!

1. Your Air-O Hood has been tested and packaged ready-to-use, requiring no further assembly, only installation.
2. After removing hood from carton, slide out aluminum mesh grease filter.
3. Unscrew and remove the electrical outlet box cover located at the side of the motor compartment.
4. Position hood against cabinet bottom with back against wall. Mark 4 hole locations, then lay hood aside. Drive #10 screws halfway into these locations and remove. If necessary to use furring strips to provide a solid base for mounting. The bottom of the range hood should be installed a minimum of 30" above cooking surface.
5. For venting Air-O-Hoods, mark the duct hole location on bottom of cabinet or vertical wall and cutout. For round duct models, install damper in duct collar with butterfly louvers opening upward. For rectangular 3 1/4" x 10" duct models, reinstall the damper assembly. On back mounted dampers the hinge pivot should be at the top; on top mounted, the hinge should be in the back.
6. Bring 120 volt power cable through wall or cabinet. Install an approved 7/8" power supply connector (not furnished).
7. Position hood on 4 screw holes at bottom of cabinet. Bring power cable through connector, and on vented models seal ductwork over duct collar. Align hood with cabinet and tighten screws.
8. Connect the black wire from the power supply cable to the black wire in the electrical outlet box. Repeat procedure with the white wires using wire nuts or any other suitable insulated connector. Ground the unit according to local code. Replace the electrical outlet box cover.
9. On vented models, secure ductwork to collar with sheet metal screws or furnace tape. Be sure the damper shutter moves freely.
10. Install maximum 60-watt light bulb.
11. Replace filter or filters. Turn on electrical power and your Air-O-Hood is now ready to use.



WARRANTY
Air-O® Rangehoods &
Ventilation Products



What is Covered

Universal Metal Industries, Inc., warrants its Air-O® brand products to the original user, to be free of defects in materials and workmanship for one (1) year from the date of purchase.

Universal Metal Industries, Inc., at its option, will replace the complete unit or any defective component without charge providing that, if requested, the product or defective component is promptly returned, prepaid to the address below. This warranty may be voided if any unauthorized service, alterations or repairs are made to the product.

What is Not Covered

- Normal maintenance and service of any product that has been subject to misuse, negligence, accident or installation inconsistent with the recommended installation instructions
- Product used other than for normal in-home use or products used outside of the United States.
- Damage to the product caused by accident, fire, flood or other acts of God.
- Service calls to educate the customer in the proper use and care of the product, correct faulty installation, change fuses or reset breakers.

Universal Metal Industries, Inc. disclaims and excludes any liability for implied warranties or for incidental or consequential damages wherever permitted by law. There are no implied warranties of merchantability or fitness for a particular use or purpose. This warranty gives you specific legal rights and you may also have other rights, which vary from state to state.

Item No. 03-002 Rev. 07/12



For more information please contact your dealer or your Air-O® representative.

800 West Grant Street, Phoenix, AZ 85007
800 875-3654 Phone 800 809-0995 Fax
602 251-3654 Phone 602 251-3889 Fax
umiphx.com trade-windonline.com

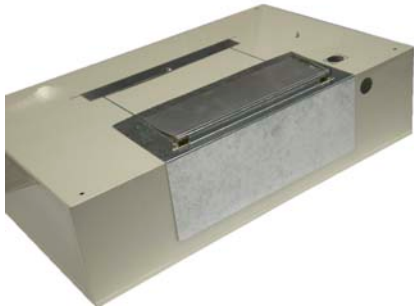
**UNIVERSAL
METAL
INDUSTRIES, INC.** 

Below are four types of ventilation options available with the 1600 series range hoods.



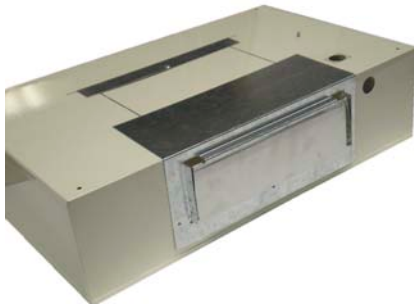
7" Round, Vertical Discharge

Knock-out both top openings. Mount the duct work to the 7" round discharge recessed into the top of the hood. Be cautious not to block the fan or damper blades with screws. Remove the charcoal filter pad, baffle plate, and 3"x10" damper and discard. An optional 7" round damper is available (part number 5AH-35-707).



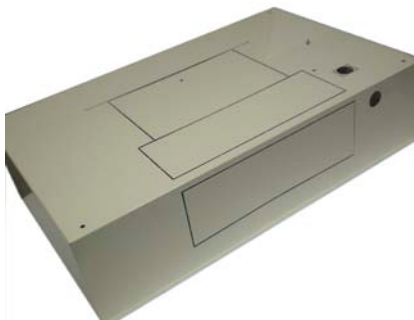
3 1/4" x 10", Vertical Discharge (from top of hood)

Knock-out top 3"x10" duct opening near the back. Attach 3"x10" damper plate on the top of the hood with damper blade opening to a vertical position. Remove charcoal filter pad and discard. For best results, seal all seams with duct tape.



3 1/4" x 10", Horizontal Discharge (from rear of hood)

Knock-out rear 3"x10" duct opening. Attach 3"x10" damper plate on the back of the hood with damper blade opening to horizontal position. Remove charcoal filter pad and discard. For best results, seal all seams with duct tape.



Re-circulating (non-vented / ductless)

The range hood is shipped in this configuration. No modifications are required.

Remove Phillips head screw holding in the baffle plate and discard both.

Remove Phillips head screw holding 3"x10" damper plate and discard both. For best results, seal all seams with duct tape.