

DIG CORPORATION 2 YEAR WARRANTY

DIG CORPORATION warrants these products to be free from defects in material and workmanship for a period of two years from date of purchase. This warranty does not cover damage resulting from accident, misuse, neglect, modification, improper installation or subjection to line pressure in excess of 50 lbs. per square inch. This warranty shall extend only to the original purchaser of the product for use by the purchaser. This warranty shall not cover batteries or any malfunction of the product due to battery failure. The obligation of DIG CORPORATION under this warranty is limited to repairing or replacing at its factory this product which shall be returned to the factory within two years after the original purchase and which on examination is found to contain defects in material and workmanship.

DIG CORPORATION SHALL IN NO EVENT BE LIABLE FOR ANY INCIDENTAL OR CONSEQUENTIAL DAMAGES OF ANY KIND; THE SOLE OBLIGATION OF DIG BEING LIMITED TO REPAIR OR REPLACEMENT OF DEFECTIVE PRODUCTS. SOME STATES DO NOT ALLOW THE EXCLUSION OR LIMITATION OF INCIDENTAL OR CONSEQUENTIAL DAMAGES, SO THE ABOVE LIMITATION OR EXCLUSION MAY NOT APPLY TO YOU.

Unattended use for prolonged periods without inspection to verify proper operation is beyond the intended use of this product, and any damage resulting from such use shall not be the responsibility of DIG CORPORATION. There are no warranties which extend beyond the description on the face hereof. In the case of purchase of the product for use other than, for irrigation purposes, DIG CORPORATION hereby disclaims any implied warranties including any warranties of merchantability and fitness for a particular purpose. In the case of the purchase of the product for personal, family or household purposes, DIG CORPORATION disclaims any such warranties to the extent permitted by law. To the extent that any such disclaimer or implied warranties shall be ineffectual, then any implied warranties shall be limited in duration to a period of one year from the date of the original purchase for use by the purchaser. Some states do not allow limitation on how long an implied warranty lasts, so the above limitation may not apply to you.

In order to obtain performance under this warranty, the unit must be returned to the factory, along with proof of purchase indicating original date of purchase, shipping prepaid, addressed as follows:

DIG CORPORATION, 1210 Activity Drive, Vista, CA 92083. Repaired or replaced units will be shipped prepaid to the name and address supplied with the unit returned under warranty. Allow four weeks for repairs and shipping time. Repair of damaged units not otherwise within warranty may be refused or done at a reasonable cost or charge at the option of DIG CORPORATION.

This warranty gives you specific legal rights, and you may also have other rights which vary from state to state.



INSTALLATION INSTRUCTIONS

Drip and Micro Sprayer Watering System

Model GE200

INTRODUCTION

THANK YOU for purchasing the DIG Model GE200 Drip and Micro Sprayer Watering System. Please take the time to read through the enclosed instructions and follow them step by step. If you have any questions, please call our customer service line at 1-800-344-2281.

GENERAL DESCRIPTION

Use these guidelines for the design and installation of a cost effective and reliable drip and micro sprayer irrigation system for your landscape area, to promote efficient water use and to protect natural resources.

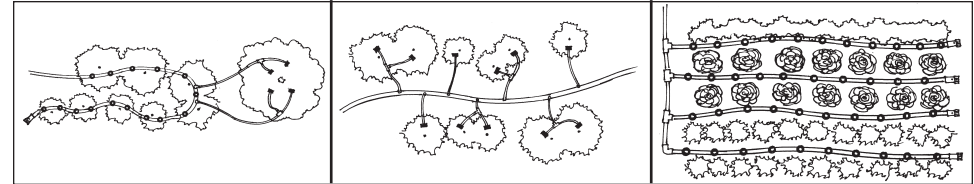
PLANNING

Make a rough sketch of the areas you would like to water. Make sure you take into account plant type, the location of each tree, shrub, or groundcover, planting density and soil type. Based on the plant size and concentration, you will determine the number of drippers per plant or the use of micro sprayers. Show the site's water sources and paved areas. This will require measuring the area you wish to water. We recommend using graph paper; this will make drawing to scale easier.

DESIGNING

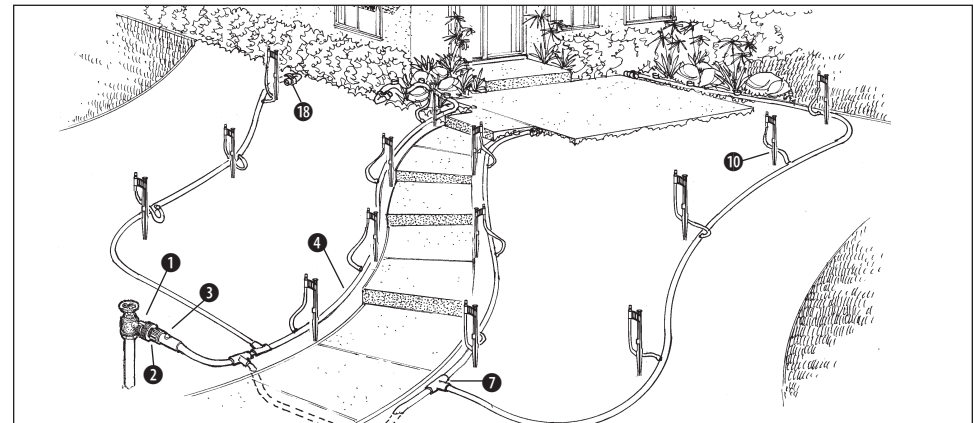
When designing your system, make sure to have a design drawing before you start the job. Design drawings should be clearly readable to scale, and should include water location, layout of drip tubing, drip emitters, micro sprayers, fittings, end line for flushing, plant materials and sidewalks. You have various options with your layout. To cover concentrated area such as flowerbeds or densely planted groundcover, use micro sprayers 5'-6' apart. For shrubs, vines, and roses use drippers (see details on page 13 of The Drip and Microsprinkler Planning and Design Manual). These drawings illustrate some methods by which you may lay out a drip system or micro sprinkler system.

DRIP LAYOUT



For detailed information, see DIG planning guide DS20-L, or www.digcorp.com

MICRO SPRAYER LAYOUT



1-800-322-9146 FAX: 760-727-0282



1210 Activity Drive
Vista, CA 92081-8510
www.digcorp.com
e-mail: dig@digcorp.com

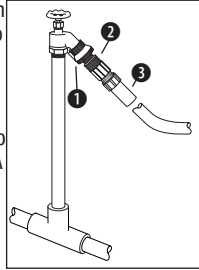
© 2003 DIG CORP 26-100



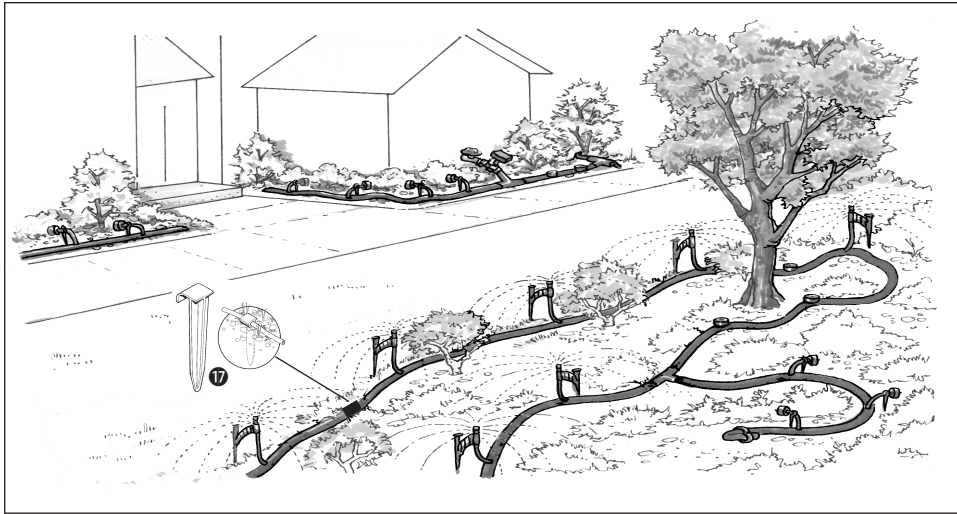
INSTALLATION

Begin your installation at the water source by attaching the backflow preventer to your faucet, then attach the 25 PSI preset pressure regulator to the backflow preventer. Connect the hose adapter to your pressure regulator and insert the drip tubing to the adapter. If you wish to automate the system, you can use a DIG battery operated controller available in a store near you.

Next, lay down your 1/2" drip tubing. If you plan to leave it above the ground, allow the drip tubing to sit in the sun before installation, making it easier to work with. Use stake to secure drip tubing to the ground. If you are burying the drip tubing, dig a trench about 6" from the roots of your plants. A shallow trench, 5-8" deep is all that is needed to keep the drip tubing safe from cultivation practices. Do not bury the end of the drip tubing, allow it to remain on the surface for periodic flushing.

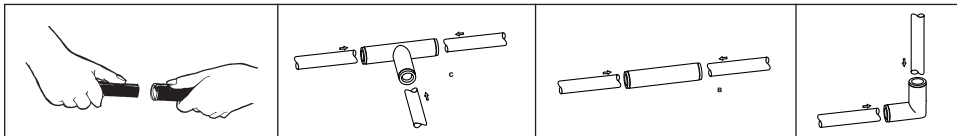


TYPICAL INSTALLATION



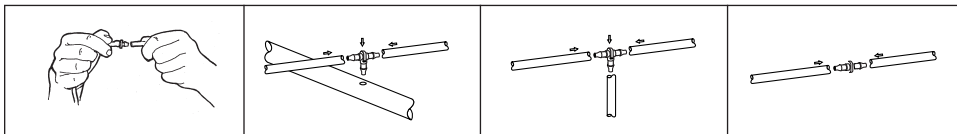
Connecting and installing 1/2" fittings:

To install your 1/2" fittings, cut the poly tubing with a hand pruner, being careful to keep dirt from entering the line. Push the poly tubing into the fitting by wiggling it as you apply force.



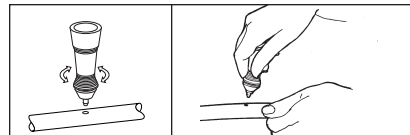
Connecting 1/4" fittings:

To install your 1/4" barb, tees or elbows, push the microtube over each of the barbed ends. Soaking the microtube in warm water will make it softer and the fittings easier to install.



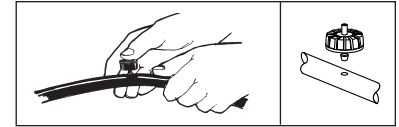
Using the punch:

To insert drippers, microsprinklers and 1/4" fittings into 1/2" line, hold the line in one hand and apply just enough pressure with the punch to puncture tubing.



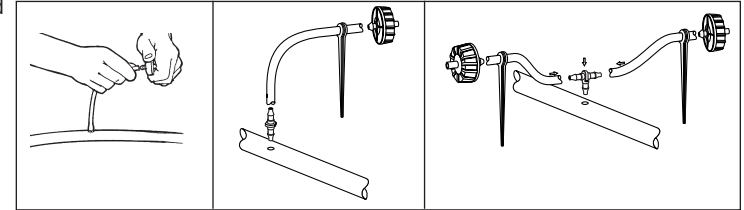
Installing drippers to 1/2" drip hose:

Drippers are installed by punching a hole in 1/2" drip tubing and snapping the larger barbed side in. If your tubing is buried, the drippers should always be located above the ground. This is achieved by inserting a 1/4" barb or tee into the drip tubing and running 1/4" microtube to the surface where the dripper is installed.



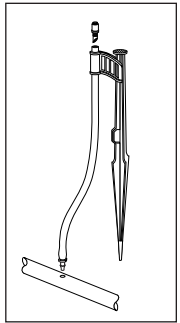
Installing drippers to 1/4" micro tube:

For plants far from the drip tubing, first insert a 1/4" barb or tee into one end of the 1/4" microtube, then insert the barb into the punched hole in the 1/2" poly tubing and run the microtube to the plant. Next insert the barbed inlet of the dripper into the end of the microtube and secure with a stake.



Installing micro sprayer to 1/2" drip tubing:

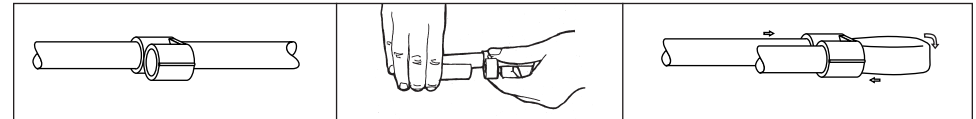
Install micro sprayer to drip tubing the same method as used for installing dripper on 1/2" drip tubing. First install the spike assembly with the microtube, flush the line before threading the spray head with the pattern that you selected. We recommend installing micro sprayer a minimum of 6" above the surface and around 5' to 6' spacing for best coverage.



Initial System Start-Up

Before turning the system on for the first time, leave all 1/2" tubing ends open and turn your water on and allow it to run freely for a few minutes. This will flush out any dirt that may be in the line.

Close the end of the line by using a "figure 8" hose end or end cap. Check to see that drippers and microsprinklers are operating correctly and that no leakage is occurring.



Repairing or Plugging a Hole on 1/2" Poly Tube:

If leakage occurs on 1/2" tubing at the base of a dripper or microsprinkler, remove that dripper/microsprinkler and insert a goof plug to close the hole and reinsert the dripper or microsprinkler in a different place.

