

CLEANUP

BEFORE YOU BEGIN CLEANING

- If you used water-based materials (latex), use warm, soapy water to clean the EZ-Roller™.
- If you used oil-based materials, use mineral spirits.

YOU WILL NEED

- A large bucket or other container that will hold cleaning solution.

TIP: A large laundry tub filled with warm, soapy water is ideal for cleanup if you used water-based materials.

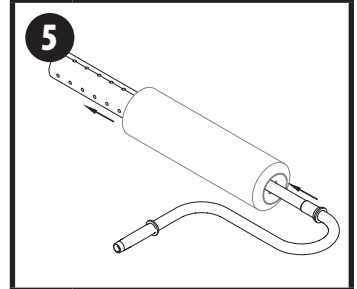
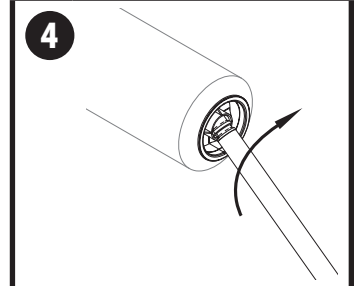
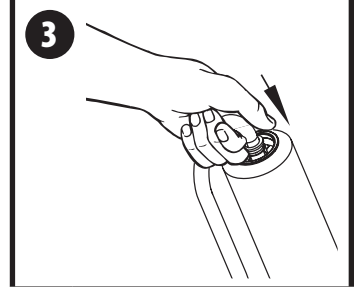
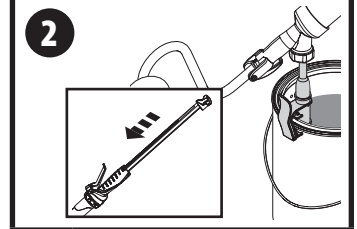
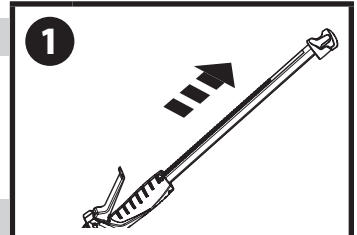
CLEANUP (1-9)

1. Pull plunger back to draw remaining material from the roller arm assembly into the tube.
2. Press the fill valve onto the fill tube. Push plunger forward to return excess material into the container.
3. Pull the roller cover assembly from the roller arm. If needed firmly push on the inner end cap with thumb to remove cover. If paint is dried you may need to tap with a mallet.



If needed, lightly tap the outer edge of the roller cover to dislodge it from the inner cap. **DO NOT** tap the inner cap as it can be damaged.

4. Using the tip of the roller arm, pry out the inner cap and outer cap. After inner cap is removed reinsert roller arm and lightly tap out the outer end cap. It will help to slightly angle arm while doing this.
5. Using the tip of the roller arm push the spacer out of the roller cover. Place caps, spacer and cover in a bucket of the appropriate cleaning solution.



6. Unclip fill tube from container, but keep installed into the fill valve. Submerge the fill tube into the appropriate cleaning solution and pull the plunger in and out a minimum of 5 times.
7. Remove the fill tube. Submerge the fill valve and roller arm and pull the plunger in and out a minimum of 5 times.
8. Remove the roller arm. Submerge the head of the EZ-Roller™ and the fill valve and pull the plunger in and out a minimum of 5 times.
9. Clean the remaining parts (caps, spacer and cover) by hand using the appropriate cleaning solution.

10. CLEANING THE FILL VALVE

- A. Unscrew the locking cap (a) on the valve housing.
- B. Remove the retainer disk (b) and the duckbill (c) from the valve housing.
- C. Clean these parts using the appropriate cleaning solution. DO NOT allow parts to soak, as they could swell and not seal properly.
- D. Inspect the duckbill valve (c) for any tears or damage.
- E. **Lubricate the complete duckbill valve (c) with petroleum jelly.**
- F. Allow all parts to dry before reassembly.
- G. Replace the duckbill (c) and the retainer disk (b).
- H. Screw the locking cap (a) back onto the valve housing.

