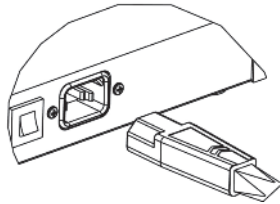


PREPARATION

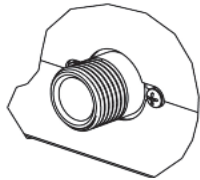
- Unpack turbine and check all parts are present (see parts list) and undamaged.
- Prepare surfaces to be sprayed ensuring they are clean, dry and smooth.
- Ensure there is adequate ventilation.
- Mask off all areas not intended for spraying.

OPERATION

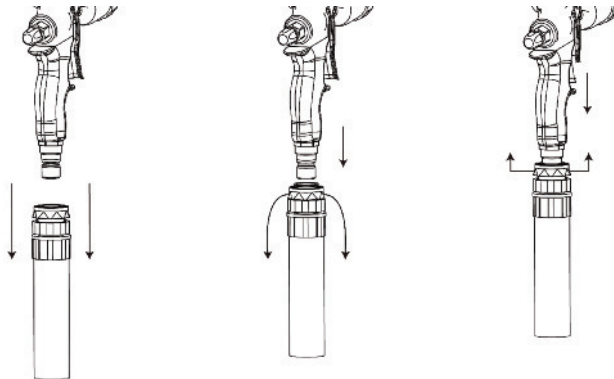
- Prepare the spray gun for operation (refer to Spray Gun Instruction Manual supplied separately).
- Plug cordset into turbine unit.



- Attach the nut at the end of the air hose to the air outlet on the turbine ensuring it is screwed on fully. The connection will be rigid when fitted correctly.



- Join the quick connect hose attachment to the air inlet on the spray gun. Tip: If connection is tight, loosen the quick connect fitting on the hose by unscrewing a little before connecting to the gun, then retighten.



- Connect cordset to a grounded outlet.
- Turn the power on 'I' (5).
- Familiarize yourself with spraying technique (for detailed instruction on how to operate spray gun refer to Spray Gun Operating Instruction Manual supplied separately) using waste cardboard.
- When you are happy with your set-up, commence spraying.

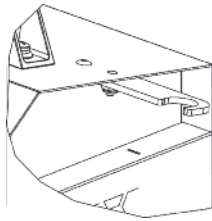
NOTE: Check the turbine unit, filters and the gun are clean and dry before operating.

NEVER leave the turbine unsupervised while plugged in.

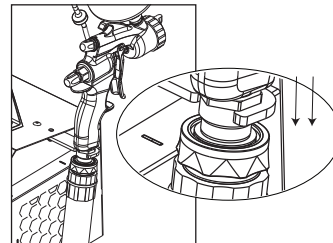
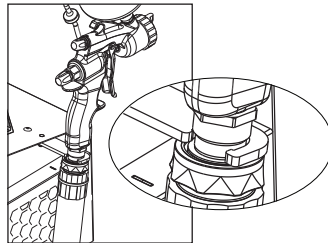
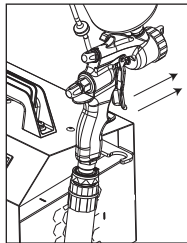
SHUTTING DOWN

If leaving your sprayer for less than 1 hour:

- Turn the power off 'O' (5).
- Extend the gun storage dock.



- Dock the spray gun in the Gun Storage Dock (7).



If leaving your sprayer for more than 1 hour:

- Turn the power off 'O' (5).
- Disconnect the air hose from the gun.
- Clean the gun as detailed in the Spray Gun Operating Instruction Manual.
- Allow the turbine unit to cool before disconnecting the air hose.