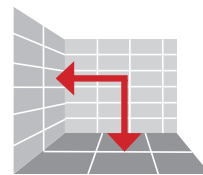


3-12 mm
1/8"-1/2"



1. After applying the adhesive, insert the base under each side of the tile. Depending on the size of the tile and the selected installation design, insert one or more bases on each side of the tile.

In the case of large tiles and thin slabs, back-buttering is necessary (application of glue on substrate and back of tile) to ensure total coverage of the back of the tile, combined with perfect joining by tapping with a white rubber mallet on tiles, or using a specific tile vibrator on thin slabs.

2. Position the second row of tiles and level it using a white rubber mallet.

3. Insert the cone onto the base. Screw down the nut, applying the necessary force to level the tiles.

4. Once the adhesive has dried, to recover the reusable parts (cone and nut) the nuts should be unscrewed and removed together with the hoods, before breaking the bases.

The bases can be removed using a white rubber mallet or your foot.
The base must be struck in the same direction as the tile joint line.

Tile thickness: 3 - 12 mm (1/8" - 1/2")

Joint: 1.5 mm (1/16").

Wider joints are possible through the combined use of LITOLEVEL and spacers (Cross and T shape).

	Product	Code	Pack
	LITOLEVEL KIT	LTLVKIT0000	Bucket: 150 bases + 150 cones + 150 nuts
	LITOLEVEL CONES + NUTS	LTLVDC0250	Box: 250 cones + 250 nuts
	LITOLEVEL BASES	LTLVBAS0250	Box: 250 pcs
		LTLVBAS0500	Box: 500 pcs

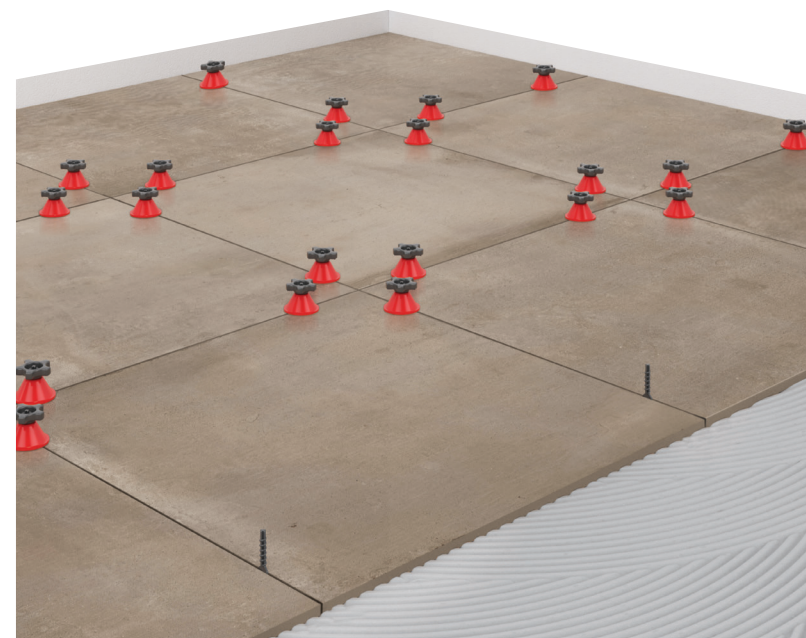
LITOKOL®

Litokol spa - via G. Falcone, 13/1 42048 Rubiera (RE) - Italy
Tel. +39.0522.622811 - Fax +39.0522.620150
info@litokol.it - www.litokol.it



LITOLEVEL

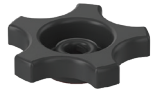
**Tile levelling
spacers**



LITOLEVEL guarantees simple and fast tile laying, eliminating lippage between tiles, thus ensuring perfectly level floors and coverings.

LITOLEVEL is recommended for the laying of large porcelain stoneware, ceramic and natural stone tiles, as well as thin porcelain stoneware or agglomerate stone slabs (thickness 3/6 mm, 1/8"-1/4").

The system is composed of 3 elements: base, cone and nut. It does not require the use of pliers or tools of any type.



NUT

The nut is made of rigid plastic and has been designed for easy insertion into the base. The nut too is reusable and can be used hundreds of times.



CONE

The cone is practical and easy to insert. It is made of rigid plastic, allowing efficient tile levelling. It is reusable and can be used hundreds of times.



BASE

The bases are designed to level tiles with thickness from 3 mm to 12 mm (1/8" - 1/2"), creating narrow joints measuring 1.5 mm (1/16"). Wider joints are possible through the combined use of LITOLEVEL and cross or "T" tile spacers in the preferred size and in any case greater than 1.5 mm (1/16").



This system has been designed to apply pressure through the screwing of the nut onto the cone, which is free. The system is therefore able to efficiently level tiles without causing any twisting phenomena between tiles and without rubbing against the tile surface.

The nut produces vertical pressure on the cone, which is free, thus preventing any undesired horizontal movement of the tiles, which would otherwise create incorrect tile alignment and therefore inconsistent joint sizes.

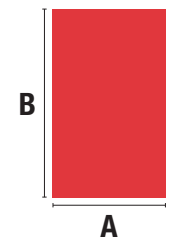
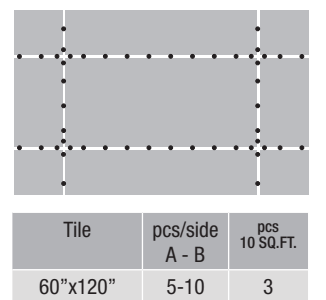
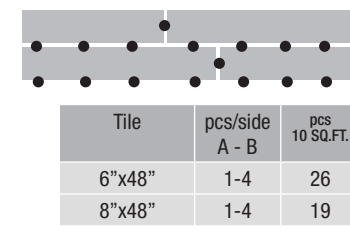
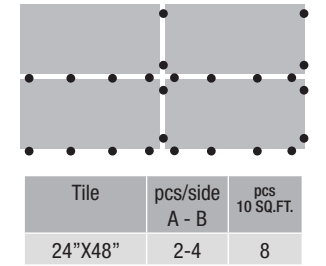
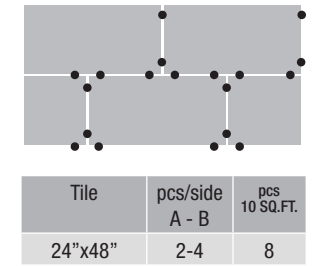
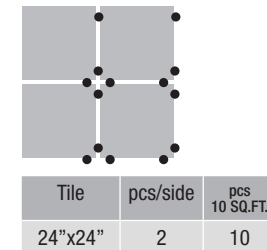
The cone does not rub against the surface of the tiles, which would otherwise be stained or marked.

The system is able to level tiles gradually, increasing or decreasing the applied pressure by simply rotating the nut, thus allowing the installer the possibility to make any small adjustments that might be needed during installation.

This system also allows fast removal in the event joints need to be cleaned of any fresh glue, which in certain situations may fall between the tiles during laying. Immediately after the cleaning phase, the system can easily be reinserted to keep the tiles level until the glue has hardened.

INDICATIVE CONSUMPTION FOR 10 SQ. FT.

* B																								
1	4"	186																						
1	6"	124	83																					
1	8"	93	62	46																				
1	10"	74	50	37	30																			
2	12"	93	62	46	37	41																		
2	13"	84	56	42	34	38	34																	
2	16"	70	46	35	28	31	28	23																
2	18"	62	41	31	25	28	25	21	18															
2	20"	56	37	28	22	25	23	19	17	15														
2	22"	51	34	25	20	23	20	17	15	14	12													
2	24"	46	31	23	19	21	19	15	14	12	11	10												
3	30"	50	33	25	20	21	19	15	14	12	11	10	10											
3	32"	46	31	23	19	19	18	15	13	12	11	10	9	9										
3	36"	41	28	21	17	17	16	13	11	10	9	9	8	8	7									
3	40"	37	25	19	15	15	14	12	10	9	8	8	7	7	6	6								
4	48"	39	26	19	15	15	14	12	10	9	8	8	7	7	6	5	5							
5	60"	37	25	19	15	14	13	11	10	9	8	7	7	6	6	5	5	4						
6	70"	36	24	18	14	14	13	10	9	8	8	7	6	6	5	5	4	4	3					
7	80"	37	25	19	15	14	13	10	9	8	8	7	6	6	5	5	4	4	3	3				
8	95"	35	23	17	14	13	12	10	9	8	7	6	6	5	5	4	4	3	3	3	3			
10	120"	34	23	17	14	12	11	9	8	7	7	6	5	5	4	4	4	3	3	3	2	2		
PCS	INCH	4"	6"	8"	10"	12"	13"	16"	18"	20"	22"	24"	30"	32"	36"	40"	48"	60"	70"	80"	95"	120"	A	
↖	PCS	1	1	1	1	2	2	2	2	2	2	2	3	3	3	3	4	5	6	7	8	10	*	



* pcs per side